

# Central Illinois Teaching with Primary Sources Newsletter

March 2007

## Natural Disasters

Welcome to the 6th issue of the **Central Illinois Teaching with Primary Sources Newsletter**, a collaborative project between the An Adventure of the American Mind / Teaching with Primary Sources Programs at Southern Illinois University Edwardsville and Eastern Illinois University.

**Natural Disasters** is the focus of the March 2007 issue. The Spotlight on Central Illinois looks at the flood devastation along the Mississippi and Illinois rivers.

The Topic Collections provide primary sources on natural disasters from images to film. We have designated an area with lesson plans and activities to use in your classroom. Each lesson plan indicates the grade level it was created for. Teachers know the ability level of their students, so you may choose a part of a lesson or to elaborate as you see fit.

We want to hear from you! Please share your comments and ideas!

## Spotlight on Central Illinois

It has always been said if you don't like Illinois weather wait ten minutes and it will change. That has certainly been the case lately. Going from a mild December to wild winds, snow and ice enough to actually close school it has been a true Illinois winter. The Library of Congress American Memory shows just some of the natural disasters that have happened around Central Illinois.

These are just two examples of natural disasters that hit Illinois. Below you can find out about other natural disasters that happened across America.



Located along the Mississippi River, Quincy Illinois has seen it's share of natural disasters in the form of floods. There are many pictures of the devastation in American Memory collections. Most of the photographs are from the floods from 1927-1929. The only flood in this area that has been more devastating is the flood of the Mississippi River in 1993.

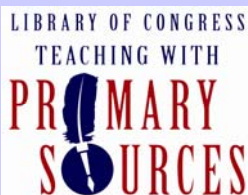
Peoria Illinois located on the Illinois River has also experienced flooding disasters. American Memory has photographs of Peoria flood damage in the Photographs from the Chicago Daily News Collection. The flood of 1927 which most of the photographs are from, started in late August and continued through October.



Galbraith Railway Mail Service  
Map, Illinois 1897

### Contents

Spotlight on Central Illinois - Page 2  
Topic Connections - Page 3  
Lesson Plans and Activities - Page 6  
What's New at LOC.GOV - Page 6  
User Tips - Page 6  
Image Sources on Page 7



### Contact Information

Amy Wilkinson  
amwilki@siue.edu

Cindy Rich  
cwrich@eiu.edu

Binod Pokhrel  
bpokhre@siue.edu

Melissa Carr  
mcarr@eiu.edu

#### Websites

[www.eiu.edu/~eiutps](http://www.eiu.edu/~eiutps)

[www.siue.edu/education/aam](http://www.siue.edu/education/aam)

## Topic Connections

**Tending the Commons** <http://memory.loc.gov/ammem/collections/tending/index.html>

Tending the Commons: Folklife and Landscape in Southern West Virginia is based on the American Folklife Center's Coal River Folklife Project (1992-99).



The project documents traditional uses of the mountains in Southern West Virginia's Big Coal River Valley. Functioning as a de facto commons, the mountains have supported a way of life that for many generations has entailed hunting, gathering, and subsistence gardening, as well as coal mining and timbering. This collection contains audio as well as photos of floods, drought and mine blowouts. An example of one audio portion is an interview with Howard Miller <http://memory.loc.gov/afc/afccmns/11/119003.mp3> who was 14 when the flood of 1932 hit his hometown. You and your students can listen to his experiences of trying to escape this natural disaster.

**Special Presentations**  
**American Ginseng and the Idea of the Commons** <http://memory.loc.gov/ammem/collections/tending/essay1a.html>  
**Historical Maps of the Study Area** <http://memory.loc.gov/ammem/collections/tending/reimap.html>  
**Landscape and History at the Headwaters of the Big Coal River Valley** <http://memory.loc.gov/ammem/collections/tending/essay5.html>  
**Ramp Suppers, Biodiversity, and the Integrity of "The Mountains"** <http://memory.loc.gov/ammem/collections/tending/season1.html>  
**Seasonal Round of Activities on Coal River** <http://memory.loc.gov/ammem/collections/tending/season1.html>  
**Seining for Hellgrammites on Coal River in West Virginia** <http://memory.loc.gov/ammem/collections/tending/essay2.html>  
**Stalking the Mother Forest: Voices beneath the Canopy** <http://memory.loc.gov/ammem/collections/tending/essay3a.html>

### Special Presentations

**American Ginseng and the Idea of the Commons** <http://memory.loc.gov/ammem/collections/tending/essay1a.html>

### Historical Maps of the Study Area

<http://memory.loc.gov/ammem/collections/tending/reimap.html>

### Landscape and History at the Headwaters of the Big Coal River Valley

<http://memory.loc.gov/ammem/collections/tending/essay5.html>

### Ramp Suppers, Biodiversity, and the Integrity of "The Mountains"

<http://memory.loc.gov/ammem/collections/tending/season1.html>

### Seasonal Round of Activities on Coal River

<http://memory.loc.gov/ammem/collections/tending/season1.html>

### Seining for Hellgrammites on Coal River in West Virginia

<http://memory.loc.gov/ammem/collections/tending/essay2.html>

### Stalking the Mother Forest: Voices beneath the Canopy

<http://memory.loc.gov/ammem/collections/tending/essay3a.html>

### Photographs from the Chicago Daily News 1902-1933

<http://memory.loc.gov/ammem/ndlpcoop/ichihtml/cdnhome.html>  
 This online collection consists of images of urban life captured on glass plate

negatives between 1902 and 1933 by photographers employed by the Chicago Daily News, one of Chicago's leading newspapers. In this collection you can search for items pertaining to the Chicago fire of 1871. You can see photographs of items that survived the fire. This collection also contains photographs of natural disasters that happened down state such as the floods in Quincy and Peoria.



### Special Presentations

**Topics to Explore** <http://memory.loc.gov/ammem/ndlpcoop/ichihtml/cdnsp.html>

### The South Texas Border

**1900-1920** <http://memory.loc.gov/ammem/award97/txuhtml/runyhome.html>

The Robert Runyon Photograph Collection of the South Texas Border Area, a collection of 8,241 items, is a unique visual resource documenting the Lower Rio Grande Valley during the early 1900s. It includes photographs from the floods of the Rio Grande, which flooded in 1916 to 1918. The collection includes glass negatives, lantern slides, nitrate negatives, prints, and postcards, representing the life's work of commercial photographer Robert Runyon (1881-1968), a longtime resident of South Texas. His photographs document the history and development of South Texas and the border, including the Mexican Revolution, the U.S. military presence at Ft. Brown and along the border prior to and during World War I, and the growth and development of the Rio Grande Valley.



### Special Presentations

**The Mexican Revolution: Conflicts of Matamoros** <http://runyon.lib.utexas.edu/conflict.html>

### History of the American West 1860-1920

<http://memory.loc.gov/ammem/award97/codhtml/hawphome.html>

These pictures tell many stories. The collection includes formal portraits of Indian chiefs as well as clothing, dwellings, and daily lives of Taos, Santa Clara, San Juan, and San Ildephonso pueblo Indians, and



**TITLE:** View of Sacramento City : as it appeared during the great inundation in January 1850 / drawn from nature by Geo. W. Casilear & Henry Bainbridge ; lith. of Sarony, New York.

**COLLECTION:** Map Collection

**SUMMARY:** Sacramento, California during the flood of January 1850.

## Topic Connections (cont)

life in the wide open boom towns of Telluride, Cripple Creek, and Leadville to the national disgrace of the Ludlow coal field massacre. These photographs include images of damage from snow storms and floods.



### Special Presentations

**Native American Women** <http://photoswest.org/exhib/gallery4/leadin.htm>

**L.C. McClure & Denver, The City Beautiful** <http://photoswest.org/exhib/gallery2/dcb.htm>

**The 10th Mountain Division** <http://photoswest.org/exhib/gallery1/camp.htm>

**Map Collections** <http://memory.loc.gov/amem/gmdhtml/gmdhome.html>

Map Collections is organized according to seven major categories. Because a map will be assigned to only one category, unless it is part of more than one core collection, searching Map Collections at this level will provide the most complete results since the indexes for all categories are searched simultaneously. The Map Collections offer maps showing earthquakes, floods and other disasters.

### Special Presentations

**Meeting of Frontiers: Collections from the Library of Congress: Maps**

<http://international.loc.gov/intldl/mtfhtml/mfdigcol/mfcdmap.html>

**Puerto Rico at the Dawn of the Modern Age** <http://memory.loc.gov/ammem/collections/puertorico/cartographic.html>

**Touring Turn of the Century America** <http://memory.loc.gov/ammem/collections/touring/index.html>

The photographs were made in a variety of locations. Most depict scenes in the United States (chiefly east of the Mississippi), together with some photographs of other nations in the Americas, Europe, and copies of paintings. Prominent subjects include buildings and views in towns and cities, colleges and

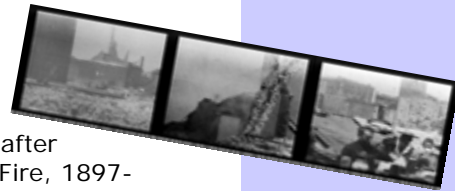
universities, battleships and yachts, resorts, natural landmarks, and industry. There are photographs of a northeaster, snow storms, severe thunder storms and earthquakes.

### Special Presentations

**Collection Highlights** <http://memory.loc.gov/ammem/collections/touring/gallery1.html>

**San Francisco and the 1906 Earthquake** <http://memory.loc.gov/ammem/papr/sfhome.html>

This collection consists of twenty-six films of San Francisco from before and after the Great Earthquake and Fire, 1897-1916. Seventeen of the films depict San Francisco and its environs before the 1906 disaster. Seven films describe the great earthquake and fire. The two later films include a 1915 travelogue that shows scenes of the rebuilt city and a tour of the Panama Pacific Exposition and a 1916 propaganda film.



**Prairie Settlement Nebraska Photographs and Family Letters** <http://memory.loc.gov/ammem/award98/nbhtml/pshome.html>

For nearly forty years the photographs of Solomon D. Butcher and the letters of Uriah W. Oblinger and his family have been used to tell the story of settlement on the Great

Plains in the latter part of the nineteenth century. Butcher's images visually document the settlers, their homesteads, and worldly goods in the harsh environment of the Nebraska Sand Hills. The letters and photographs tell of the great challenges these settlers faced with mother nature. The Oblinger collection gives a voice to Butcher's photographs, in letters that not only express the hopes and fears of many homesteaders, but also offer candid descriptions of daily life on the prairie.

### Special Presentations

**The Oblinger Family and their Letters** <http://memory.loc.gov/ammem/award98/nbhtml/psfamily.html>



**TITLE:** A storm at sea / Thomas A. Edison, Inc. ; producer, James White. United States : Edison Manufacturing Co., 1900.

**COLLECTION:** Early Motion Pictures 1897-1920

**SUMMARY:** From Edison films catalog: While our photographers were crossing the Atlantic Ocean a most wonderful and sensational picture was secured, showing a storm at sea. The picture was secured by lashing the camera to the after bridge of the Kaiserine Maria Theresa [sic], of the North German Lloyd Line, during one of its roughest voyages. The most wonderful storm picture ever photographed. Taken at great risk. 100 feet. 15.00.

## Topic Connections (cont)

**Westward by Sea** <http://memory.loc.gov/ammem/award99/mymhihtml/mymhi-home.html>



This online collection presents pictorial and textual materials that illustrate major themes in the history of maritime westward expansion. These themes include, but are not limited to, the California Gold Rush, the roles of women, the immigrant experience, whaling life, life at sea, shipping and native populations. The collection focuses mainly on primary sources such as ships' logbooks and secondary sources, including nineteenth-century published narratives of voyages and travels. A number of photographs, paintings, maps, and nautical charts have been selected to illustrate more vividly the story of Americans' western seaborne travel. This collection also includes a poem about being at sea.

### Special Presentations

**From the Log of Mystic Seaport: Four Illustrated Essays** <http://memory.loc.gov/ammem/award99/mymhihtml/myessays.html>

**American Life Histories** <http://memory.loc.gov/ammem/wpaintro/wpahome.html> The holdings from the Federal Writers' Project span the years 1889-1942 and cover a wide range of topics and subprojects. Altogether, the Federal Writers' holdings number approximately 300,000 items and consist of correspondence, memoranda, field reports, notes, graphs, charts, preliminary and corrected drafts of essays, oral testimony, folklore, miscellaneous administrative and miscellaneous other material. In these interviews you can get a glimpse of how people survived and continued after many different kinds of major storms.

### Special Presentations

**Voices of the Thirties: An Introduction to the WPA Life Histories Collection** <http://memory.loc.gov/ammem/wpaintro/exhome.html>

**Northern Great Plains, 1880-1920**

<http://memory.loc.gov/ammem/award97/ndfahtml/ngphome.html>

These two collections from the Institute for Regional Studies at North Dakota State University contain 900 photographs of rural and small town life at the turn of the century. Highlights include images of sod homes and the people who built them; images of farms and the machinery that made them prosper; and images of one-room schools and the children that were educated in them. This collection contains photographs from a three day blizzard in 1913.



### Special Presentations

**North Dakota Historical Overview**

[http://memory.loc.gov/ammem/award97/ndfahtml/ngp\\_nd.html](http://memory.loc.gov/ammem/award97/ndfahtml/ngp_nd.html)

**Implements Used on the Farm**

[http://memory.loc.gov/ammem/award97/ndfahtml/ngp\\_farm.html](http://memory.loc.gov/ammem/award97/ndfahtml/ngp_farm.html)

**America from the Great Depression to WWII**

<http://memory.loc.gov/ammem/fsowhome.html>

The images in the Farm Security Administration - Office of War Information Collection are among the most famous documentary photographs ever produced. Created by a group of U.S. government photographers, the images show Americans in every part of the nation. In the early years, the project emphasized rural life and the negative impact of the Great Depression, farm mechanization, and the Dust Bowl. In later years, the photographers turned their attention to the mobilization effort for World War II. There are many images in this collection that show the hardships people faced during dust storms and droughts.



**TITLE:** The storm; An imitation of nature. 1858 Weber, Henry  
**COLLECTION:** Historic Sheet Music 1850-1920

## Topic Connections (cont)

### American Environmental Photographs 1891-1936 <http://memory.loc.gov/ammem/fsowhome.html>

The earliest photographs in the collection were taken in 1891 in the arid desert landscapes of California, Arizona, Utah, and Nevada. The latest images were made in the Hawaiian Islands in 1936. Photographs in the collection were made in a variety of sizes and formats and preserved by the Department of Botany as glass plate negatives, mounted prints, and glass lantern slides. There are images that show landslides and cave-ins that happened in Illinois.



### Special Presentations

**Time Line 1898-1934** <http://memory.loc.gov/ammem/collections/ecology/aepchron.html>

**Ecology and the American Environment** <http://memory.loc.gov/ammem/collections/ecology/aepsp.html>

### Search Terms

There is so much in the Library of Congress American Memory that we can't possibly show you all the great items. Below are some examples of search words that you can use when you are researching Natural Disasters in American Memory.

Natural Disaster  
Storms  
Blizzard  
Ice Storm  
Dust Storm  
Floods  
Snow  
Hurricane  
Blizzard  
Earthquake  
Wild Fire  
Lightning  
Rain  
Drought  
Cloud burst

## Lesson Plans & Activities

### Lesson Plans:

**Nature's Fury** Grades 6-8 <http://memory.loc.gov/learn/lessons/00/nature/index.html>

**Visions in the Dust** Grades 5-8 <http://memory.loc.gov/learn/lessons/99/dust/intro.html>

### Activities & Presentations:

**Natural Disasters A Guide to Selected Resources** <http://www.loc.gov/rr/scitech/SciRefGuides/naturaldisasters.html>

**Hurricanes A Guide to Selected Resources** <http://www.loc.gov/rr/scitech/SciRefGuides/hurricanes.html>

### Webcast:

**Weather Forecasting** [http://www.loc.gov/today/cyberlc/feature\\_wdesc.php?rec=4014](http://www.loc.gov/today/cyberlc/feature_wdesc.php?rec=4014)

**Sebastian Junger Perfect Storm** [http://www.loc.gov/today/cyberlc/feature\\_wdesc.php?rec=3490](http://www.loc.gov/today/cyberlc/feature_wdesc.php?rec=3490)

### Wise Guides:

**Founding Fathers, First Weathermen** <http://www.loc.gov/wiseguide/weathermen.html>

**Go Fly a Kite** <http://www.loc.gov/wiseguide/mar03/kite.html>

### Today in History:

**Galveston Storm** <http://memory.loc.gov/ammem/today/sep08.html>

**San Francisco Earthquake** <http://memory.loc.gov/ammem/today/apr18.html>

**Fire in the Midwest** <http://memory.loc.gov/ammem/today/oct08.htm>

**America's Library (Elementary) Disasters, Devastation and Destruction** <http://www.americaslibrary.gov/cgi-bin/page.cgi/sh/disaster>

**Everyday Mysteries What Causes the Sound of Thunder?** <http://www.loc.gov/rr/scitech/mysteries/thunder.html>

**Red Sky at Night** <http://www.loc.gov/rr/scitech/mysteries/weather-sailor.html>

**Snowflakes** <http://www.loc.gov/rr/scitech/mysteries/snowcrystals.html>

**Telling Temperature by Listening to Crickets** <http://www.loc.gov/rr/scitech/mysteries/cricket.html>

**Water Down the Drain** <http://www.loc.gov/rr/scitech/mysteries/coriolis.html>

**Hot in Summer Cold in Winter** <http://www.loc.gov/rr/scitech/mysteries/seasons.html>



**TITLE:** Interview about dust storms, sleet storms, and tall stories (part 2 of 2) [http://memory.loc.gov/cgi-bin/query/r?ammem/toddbib:@field\(DOCID+@lit\(4088a2\)\)](http://memory.loc.gov/cgi-bin/query/r?ammem/toddbib:@field(DOCID+@lit(4088a2)))

**COLLECTION:** Voices from the Dust Bowl: The Charles L Todd and Robert Sonkin Migrant Worker Collection 1940-1941



**TITLE:** A description of the great storm at Providence, (R. I.) September 23, 1815. to accompany the print, published by Bowen & Kidder. Sept. 2. 1816. Boston, Sept. 2, 1816.

**COLLECTION:** An American Time Capsule: Three Centuries of Broadside and Other Printed Ephemera

## Lesson Plans & Activities

**More on the Web**  
**NASA Natural Disaster Reference Database** <http://ndrd.gsfc.nasa.gov/>  
**NOAA Hurricane and Natural Disaster Brochure** <http://www.aoml.noaa.gov/general/lib/hurricbro.html>  
**FEMA for Kids** <http://www.fema.gov/kids/>  
**PBS Natural Disaster Lesson Plan** <http://www.pbs.org/weta/>



## What's New at LOC.GOV?

The Library of Congress unveiled a new webportal page "African American History Resource" <http://www.loc.gov/africanamericans/>. This special portal is the theme for 2007 "From Slavery to Freedom: Africans in the Americas." This site contains news and events pertaining to Black History Month that took place at the Library of Congress. It also contains collections, audio, video and images, there is also a section just for teachers with lesson plans and primary sources for use in the classroom.

## User Tip

Need a time saver tip on searching the Library of Congress (LOC) website? Use the Collection Connection found within "The Learning Page" sub site, <http://memory.loc.gov/learn/>. Collection Connections provide primary source sets, links to pages throughout the LOC website on the chosen topic/theme, lessons, activity ideas and keywords for using the collections to develop critical thinking skills. How do I get there? From the main Library of Congress website ([www.loc.gov](http://www.loc.gov)), click on Teachers in the left hand column. Then click on the link collection connections. Just scroll down to view various topics and themes of interest.

## Image Sources



Library of Congress  
 P&P Online Catalog  
 Reproduction Number: LC-U9-10363-5 (b&w film neg.) , LC-DIG-ppmsca-03130



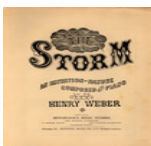
Library of Congress  
 View of Sacramento City : as it appeared during the great inundation in January 1850 / drawn from nature by Geo. W. Casilear & Henry Bainbridge ; lith. of Sarony, New York.  
 Sarony, Napoleon, 1821-1896, lithographer.  
 c1850.



Library of Congress  
 Soil blown by "dust bowl" winds piled up in large drifts near Liberal, Kansas.  
 Rothstein, Arthur, 1915- photographer.  
 1936 Mar.



Library of Congress  
 A storm at sea / Thomas A. Edison, Inc. ; producer, James White.  
 United States : Edison Manufacturing Co., 1900.



Library of Congress  
 The storm; An imitation of nature. 1858  
 Nashville; Cincinnati, Tennessee; Ohio, C.D. Benson & Bro; A.c. Peters & Bro., 1858

### Image Sources



Library of Congress  
A description of the great storm at Providence, (R. I.) September 23, 1815. to accompany the print, published by Bowen & Kidder. Sept. 2. 1816. Boston, Sept. 2, 1816.  
Boston, 1816.



Library of Congress  
A Freak of the Storm  
[191-?]



Library of Congress  
Photographs from the Chicago Daily News 1902-1933  
Pigs on embankment by flood in Quincy, Illinois  
1929



Library of Congress  
Photographs from the Chicago Daily News 1902-1933  
Automobile sitting half submerged in water beneath the damaged City Hall building in Peoria, Illinois after a flood  
1927



Library of Congress  
The bridge to Howard and Sadie Miller's home washed out by the flood of 1996.  
Photographer: Eiler, Lyntha Scott  
May 26, 1996



Library of Congress  
Two horses standing on the porch of a house surrounded by water from a 1913 flood in Peru, Indiana  
1913 Mar. 28.



Library of Congress  
Rio Grande flood, 1917  
Runyon, Robert, 1881-1968



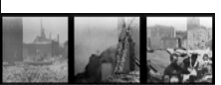
Library of Congress  
Snow storms / photo by Harry M. Rhoads  
1920?



Library of Congress  
This dynamic planet : world map of volcanoes, earthquakes, impact craters, and plate tectonics / compiled by Tom Simkin ... [et al.] ; cartography by James E. Queen, Will R. Stettner, and Paul Mathieux



Library of Congress  
Panorama from roof of Ferry P.O., San Francisco, Cal..  
c1906.



Library of Congress  
San Francisco earthquake and fire, April 18, 1906 / [production company unknown]



Library of Congress  
Ruins of Bond residence after a cyclone, Kearney, Nebraska.  
Solomon D. Butcher  
4 June 1908



Library of Congress  
Squall off Cape Horn.  
c. 1870



**TITLE:** A Freak of the storm.  
**COLLECTION:** The Great North Plains, 1880-1920: Photographs from the Fred Hultstrand and F.A. Pazandak Photograph Collection  
**SUMMARY:** Tree with a rifle blown high into the trunk. In background are buildings and fences. Location and events surrounding the image unknown, likely in North Dakota.

## Image Sources (Collection & Image Title)



Library of Congress  
Digging out after a three-day snowstorm about 1913.  
McCarthy, John, 1861- photographer  
[1913?]



Library of Congress  
Drought corn. Central Georgia  
Lange, Dorothea, photographer.  
1936 July.



Library of Congress  
Mud piled up by [a] cloud burst, Kaysville, Utah  
1923