



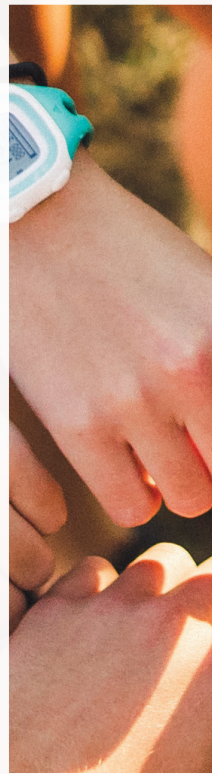
EASTERN ILLINOIS UNIVERSITY™

THIS IS OUR LIFE'S WORK.

TRANSFER TO EIU

FALL 2023





WE BELIEVE

every one of our students can reach heights they never realized were possible given the right circumstances. In the right place, with the right people around them, they can learn and grow like never before, and open up greater possibilities than they imagined.

It's that simple, and that life-changing.



When we welcome a student, we're all in. We're committed to helping them achieve. To lift them up so they can see what they can become. We make an extraordinary, personal investment in each student that most schools would never consider. Faculty members here are incredibly invested in you as a person, well beyond imparting knowledge. Most are longtime members of our close community and can't imagine doing it any other way. While the size is personal, there are also plenty of opportunities to grow, from engaging in clubs and sports, to community service and networking with our dedicated alumni.

We invest in your future because we know the payoff is thrilling and lasting. It's no wonder people feel so strongly about EIU once they've been here. We call it "bleeding blue."

All you have to do is be ready to explore, engage and grow as our community invests in you. So you can step into a life you never knew was possible.

We think that's truly extraordinary.

TRANSFER ADMISSIONS

Our all in commitment doesn't just apply to our traditional freshmen. Transfer students thrive at EIU because we invest the same energy in their success, no matter where their college career began.

OFFICE OF TRANSFER RELATIONS

217-581-2120

transfer@eiu.edu

transfer.eiu.edu

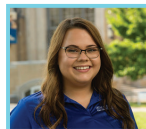
The Office of Transfer Relations is a resource center dedicated to helping students, faculty and staff. Our office can help you with:

- Admission information
- Transfer procedures and policies
- Unofficial evaluations
- Pre-advisement
- Course equivalencies



RITA PEARSON

Transfer Coordinator
217-581-7663
ripearson@eiu.edu



SIERRA HOLLENBECK

Southern Illinois
Transfer Counselor
217-581-7661
shollenbeck@eiu.edu



RYAN HOWARD

Central Illinois
Transfer Counselor
217-581-3200
rdhoward@eiu.edu



EMILY SKUPIEN

Suburban Chicago
Transfer Counselor
708-341-4240
easkupien@eiu.edu



SHIJUANA SHANNON

City Colleges of Chicago
Transfer Counselor
708-272-5931
smshannon@eiu.edu

Our staff will be your connection to a smooth and successful experience at EIU. They are committed to helping you find your way. Please contact them with questions or email Transfer Relations at transfer@eiu.edu.

PANTHER PLEDGE

www.eiu.edu/pantherpledge

transfer.eiu.edu

The Panther Pledge offers community college students guaranteed admission to Eastern Illinois University to complete their bachelor's degree.

- Guaranteed Admission
- Easy Transfer Planning
- Early Connection to EIU
- Application fee will be waived

TRANSFER CREDIT

- Contact a transfer counselor for an unofficial evaluation of transfer credit. We will place you into the curriculum of your choice and help you plan for a smooth transfer.
- Eastern accepts all college-level transfer credit from institutions accredited by the Higher Learning Commission or other regional accrediting agencies.
- Elective credit will be awarded and applied to total hours toward graduation if there is no equivalency to a course at Eastern.
- Courses that do NOT transfer include those that are remedial, developmental or orientational in nature.
- There is no limit to the number of hours a student can transfer.
- Students must complete all remaining graduation requirements regardless of the number of hours transferred.

APPLICATION TIMELINE

- There is no specific deadline for admission application.
- Applications are accepted based upon the availability of facilities and resources.
- Applications are available online at eiu.edu/apply.

A COMPLETE APPLICATION INCLUDES:

- Official high school transcripts* are requested to verify high school graduation and to check for exemption from EIU's foreign language graduation requirement.
- Official college transcripts* from each institution attended.
- If the applicant has fewer than 24 hours of college coursework at the time of application, and does not meet the test-optional admissions requirement, an official ACT or SAT test result will be required.

****Transcripts are only official when sent directly from parent institution to Eastern.***

GRADES

- GPA is used for admission only.
- Credit for the course will transfer, not the grade.
- GPA earned at Eastern is based on only those courses taken at Eastern.
- Credit for courses in which a "D" was earned will transfer as long as the overall GPA from that institution is a least a "C" average. ("C" or better required for English and speech.)

◆ TRANSFER ADMISSIONS REQUIREMENTS: MUST MEET **ONE** OF THE FOLLOWING CRITERIA

- **IF YOU HAVE 24 OR MORE SEMESTER HOURS:**
2.0/4.0 overall; AND 2.0/4.0 from last college attended, OR
- **IF YOU HAVE FEWER THAN 24 SEMESTER HOURS:**
2.0/4.0 overall; AND 2.0/4.0 from last college attended; AND meet the following high school admission criteria:

TEST-OPTIONAL
2.8/4.0 GPA
TEST-REPORTED
2.5/4.0 GPA and 18 ACT or 960 SAT*

*SAT 860 if taken prior to March 2016

MAJORS, MINORS & PRE-PROFESSIONAL PROGRAMS

Accounting [Mm](#)
 Advertising [m](#)
 Africana Studies [Mm](#)
History & Culture, Fine Arts, Literature, Gender, Politics & International Development
 Aging Studies [m](#)
 Anthropology [m](#)
 Art (BA & BFA) [M](#)
 Art History [Mm](#)
 Art - Teaching [M](#)
 Asian Studies [m](#)
 Astronomy [M](#)
 Biochemistry [Mm](#)
 Biological Sciences [Mm](#)
 Broadcast Journalism [M](#)
 Broadcast Meteorology [m](#)
 Business Administration [MmO](#)
 Business Analytics & Information Systems [Mm](#)
 Career & Technical Education [M](#)
Business, Family & Consumer Sciences, Technology
 Chemistry (BA & BS) [Mm](#)
General Chemistry, Chemistry Management
 Civic and Nonprofit Leadership [Mm](#)
 Clinical Laboratory Science (co-op) [M](#)
 Communication & Cultural Diversity [m](#)
 Communication Disorders & Sciences [Mm](#)
 Communication in Organizations [MO](#)
 Communication Studies [Mm](#)
 Community Health [MO](#)
 Computer & Information Technology [M](#)
 Computer Science [Mm](#)
 Computer Science - Teaching [m](#)
 Computational Physics [M](#)
 Construction Management [M](#)
 Corporate Communication [M](#)
 Creative Writing [m](#)
 Criminology & Criminal Justice [Mm](#)
 Digital Media Technology [Mm](#)
 Early Childhood Education [M](#)
 Early Childhood Program Administration [m](#)
 Earth Science [m](#)
 Economics [Mm](#)
 Electrical Engineering [M](#)
 Elementary Education (Grades 1-6) [M](#)
 Emergency Mgmt & Disaster Preparedness [MO](#)
 Engineering (co-op) [M](#)
 Engineering Physics [M](#)
 Engineering Technology [Mm](#)
 English [Mm](#)
Literary & Cultural Studies, Creative Writing, Professional Writing, English Studies
 English Language Arts - Teaching [Mm](#)
 Entrepreneurship [m](#)
 Environmental Biology [M](#)
 Environmental/Physical Geography [M](#)
 Environmental Impact and Sustainability [m](#)
 Ethics [m](#)
 Exercise Science [M](#)

Fashion Merchandising [Mm](#)
 Film Studies [m](#)
 Finance [Mm](#)
 Financial Literacy [m](#)
 French [Mm](#)
 French - Teaching [Mm](#)
 Geographic Information Sciences [m](#)
 Geography [Mm](#)
 Geology [Mm](#)
 German [Mm](#)
 German - Teaching [Mm](#)
 Graphic Design (BA & BFA) [Mm](#)
 Health Administration [M](#)
 Health Communication [MmO](#)
 Health & Medical Humanities [m](#)
 History [Mm](#)
 History - Teacher Licensure in Social Science [M](#)
 Hospitality & Tourism [M](#)
 Human Geography [M](#)
 Human Resource Management [m](#)
 Human Services [Mm](#)
 Integrative Studies [M](#)
 Interdisciplinary Studies [MO](#)
 Interpersonal Communication [M](#)
 International Studies [M](#)
Economics, History, Political Science
 Jazz Studies [m](#)
 Journalism [Mm](#)
 Kinesiology, Sport, & Recreation [m](#)
 Kinesiology, Sport, & Recreation - Teaching [Mm](#)
 Latin American & Latinx Studies [m](#)
 Literary & Cultural Studies [m](#)
 Management [Mm](#)
Human Resource, International, General
 Management Information Systems [m](#)
 Marketing [Mm](#)
 Mass Communication [M](#)
 Mathematics [Mm](#)
 Mathematics Teaching (grades 9-12) [Mm](#)
 Meeting & Event Management [m](#)
 Middle Level Education (grades 5-8) [M](#)
 Military Science [m](#)
 Music [Mm](#)
Audio & Recording Technology, Open Studies, Music Theory & Composition
 Music Performance [M](#)
Instrumental, Keyboard, Vocal, Composition, Jazz
 Music - Teaching [M](#)
Instrumental, Vocal, General
 Music Technology [m](#)
 Neuroscience [Mm](#)
 Nursing (RN to BSN Completion) [MO](#)
 Nutrition & Dietetics [Mm](#)
 Operations & Supply Chain Management [m](#)
 Organizational Development [MO](#)
 Organizational Leadership [m](#)
 Philosophy [Mm](#)
 Photojournalism [m](#)

Physical Education Teaching (grades K-12) [M](#)
 Physics [Mm](#)
 Political Science [Mm](#)
 Pre-Chiropractic [m](#)
 Pre-Dentistry [m](#)
 Pre-Engineering [m](#)
 Pre-Law [m](#)
 Pre-Medicine [m](#)
 Pre-Occupational Therapy [m](#)
 Pre-Optometry [m](#)
 Pre-Pharmacy [m](#)
 Pre-Physical Therapy [m](#)
 Pre-Physician's Assistant [m](#)
 Pre-Podiatry [m](#)
 Pre-Veterinary Medicine [m](#)
 Premodern Global Studies [m](#)
 Professional Writing [m](#)
 Psychology [MmO](#)
 Public Affairs Reporting [M](#)
 Public Health [m](#)
 Public Health - Teaching [m](#)
 Public History [m](#)
 Public Relations [Mm](#)
 Radio & Audio Production [m](#)
 Religious Studies [m](#)
 Science - Teaching [M](#)
Biological Sciences, Chemistry, Earth Sciences, Physics
 Social Media Engagement [m](#)
 Sociology [Mm](#)
 Spanish [Mm](#)
 Spanish - Teaching [Mm](#)
 Special Education [M](#)
Early Childhood, Early Childhood Dual, Elementary Ed, Elementary Ed Dual, Secondary Ed Dual, Standard Special
 Sport Management [M](#)
 Sports Media Relations [Mm](#)
 Strategic Social Media Communication [m](#)
 Studio Art (BA & BFA) [Mm](#)
Two-Dimensional, Three-Dimensional
 Talent Development [m](#)
 Television & Video Production [M](#)
 Theatre [Mm](#)
Performance, Musical Theatre, Tech/Design, Dramatic Writing, General
 Video Production [m](#)
 Women's, Gender, & Sexuality Studies [m](#)
 Workplace Wellness [m](#)

M – major
m – minor and/or area of study
O – online option
Italics – concentration or emphasis

Honors Programs available in all departments

VISIT WWW.EIU.EDU/MAJORS TO CONNECT YOUR INTERESTS TO OUR MAJORS.

OPPORTUNITY LIVES HERE.

Students from all kinds of backgrounds and experiences succeed at EIU. We make the experience accessible and inclusive so that you can be focused on your education. Need help navigating your financial aid options? Don't hesitate to ask. We're committed to helping you succeed, and that commitment doesn't end at the classroom door.

TRANSFER ACADEMIC EXCELLENCE SCHOLARSHIPS

CUMULATIVE GPA	TIER ONE	
	3.5 - 4.0	\$5,000* (\$2,500 ANNUALLY)
	TIER TWO	
	3.0 - 3.49	\$3,000* (\$1,500 ANNUALLY)

* Renewable up to four consecutive semesters if renewal criteria is met. Full-time enrollment (12 semester hours) required.

MID-YEAR & SUMMER APPLICANTS:

Mid-Year and Summer applicants will need to notify the Federal Student Aid Information Center (1-800-4FEDAID) of their plans to transfer to EIU by submitting Eastern's FAFSA School code: 001674. Additionally, summer applicants will need to request an institutional summer application form from Eastern's Office of Financial Aid at 217-581-6405.

◆ COST TO ATTEND EASTERN: 2022-2023

	in-state	out-of-state*
Tuition	\$ 9,709	\$ 12,136
Textbook rental fee	\$ 293	\$ 293
Program/services fees	\$ 3,319	\$ 3,319
Room & board	\$ 10,394**	\$ 10,394**
Total	\$ 23,715**	\$ 26,142**

*All residents of bordering states to Illinois (Indiana, Iowa, Kentucky, Michigan, Missouri & Wisconsin) and academically talented out-of-state transfers with a 3.0 GPA pay in-state tuition.

**Based on 30 hours of enrollment and the 12-plus meal plan for incoming students.

NOTE: Tuition is based on \$324 per credit hour for in-state residents and \$405 per credit hour for non-residents.



PHI THETA KAPPA

<https://eiu.academicworks.com>

- \$1,000 one-time award
- Fall admissions only
- Associate degree required
- Minimum 3.50 GPA
- Application deadline is March 15

STUDENT EMPLOYMENT

www.eiu.edu/humanres/student_employment.php

- Apply in any department on campus
- Work-Study is available for students with financial need
- View and apply to student employment opportunities at eiu.joinhandshake.com

VETERANS BENEFITS

www.eiu.edu/finaid/veteran_benefits.php

www.eiu.edu/veterans

- Various programs available
- Contact: 217-581-7510 or finaid@eiu.edu
- Online resources at www.gibill.va.gov

PANTHER PROMISE TUITION WAIVER

We are committed to making your education accessible.

Students from households with an annual income ranging from \$34,000 to \$83,000 will receive up to \$2,500 towards tuition for up to eight semesters.



APPLY FOR ADDITIONAL EIU SCHOLARSHIPS

HERE: eiu.academicworks.com

DON'T FORGET YOUR FAFSA!

Students should complete the Free Application for Federal Student Aid (FAFSA) as soon as possible after Oct. 1. If you're an Illinois resident who isn't otherwise eligible for federal financial aid, you can submit the Alternative Application for Illinois Financial Aid.

\$40 MILLION

in scholarships and awards
were given to EIU students
during the 2021-22 school year.
(over \$14,000 per student on average)

GUARANTEED TUITION RATE

The Guaranteed Tuition Rate Program ensures your first-year tuition rate at EIU will remain the same for four continuous academic years. Even if tuition costs rise during your time at EIU, yours will not.

OUR SCHOOL CODE IS:

001674

WWW.STUDENTAID.GOV

Make sure you list us as your first choice!
EIU's priority filing date for
financial aid is **December 15**.

Ranked 4th in the Nation for
Best Value Colleges
& Universities
(College Consensus)

TRANSFER CREDIT

ASSOCIATE DEGREE BENEFITS

A student transferring to Eastern who has received a baccalaureate-oriented associate degree is guaranteed the following:

- At least 60 semester hours in transfer credit
- Junior status
- All lower-division general education requirements met
- Cultural Diversity requirement met, unless a teaching licensure is sought

Note: Students may transfer EIU coursework back to the community college to complete an associate degree.

ILLINOIS ARTICULATION INITIATIVE

www.iTransfer.org

Transfer students who complete the 37-41 semester-hour package of the Illinois Articulation Initiative (IAI) from any participating college or university in Illinois will be guaranteed the following:

- All lower-division EIU general education requirements will automatically be waived.
- The Cultural Diversity requirement will be met, unless a teaching licensure is sought.

CREDIT FOR NATIONALLY STANDARDIZED TESTS

(CLEP, Advanced Placement, International Baccalaureate and UExcel Exams)

www.eiu.edu/registra/creditstandardizedtests.php

- College credit will be granted toward graduation and may be used in fulfilling requirements if scores meet Eastern's standards established by the appropriate department.
- Official test scores and records must be sent to the Office of the Registrar for evaluation to determine proper placement and credit.

TRANSFEROLOGY

www.iTransfer.org - My Credits Transfer

Eastern is a participant in the Transferology system, a free online resource where you can find out how courses transfer between institutions, how courses satisfy degree requirements, and the different majors institutions offer.

OUT-OF-STATE CREDIT

- Content will be compared to course offerings at Eastern.
- Eastern's Office of the Registrar will need a copy of the transfer institution's catalog and/or syllabi of courses taken.
- Sending this information prior to enrollment will assist in the evaluation of transfer credit.
- Courses will count toward general education if they clearly match an IAI general education course description.
- Out-of-state baccalaureate-oriented associate degrees automatically meet Eastern's lower-level general education requirements.

87%

of EIU undergraduates
SECURE EMPLOYMENT
in professional positions
or make plans to attend
GRADUATE SCHOOL

(7% HIGHER THAN THE NATIONAL
AVERAGE)

GRADUATION REQUIREMENTS

To achieve a baccalaureate degree, students must complete the following requirements:

1. GENERAL EDUCATION REQUIREMENTS

Students must complete a Senior Seminar or Study Abroad Capstone and one of the following general education programs:

- Transferable baccalaureate-oriented Associate Degree
- Illinois Articulation Initiative General Education Core Curriculum
- Courses that fit into EIU general education

2. DEGREE PROGRAM

- Requirements for the major must be met.
- Majors may have specific GPA requirements. Consult catalog for details.

3. 12 SEMESTER HOURS AT EIU IN MAJOR

4. 40 SEMESTER HOURS OF UPPER-DIVISION COURSES

- Courses from a community college or other two-year institution will not count in this total.
- Upper-division courses at Eastern are those numbered 3000 or above.

5. 30 SEMESTER HOURS FROM EIU

- 30 must be taken in the junior and senior years.
- 12 must be taken during the senior year.

6. 120 SEMESTER HOURS CUMULATIVE

- All college-level credit, including electives, count toward these 120 hours.

7. FOREIGN LANGUAGE

- Successfully complete two semesters in a single foreign language. Students may be exempt from this requirement based on foreign language taken while in high school or at their previous colleges.

Exemptions:

- Two years in a single foreign language in high school with a "C" average
- Second semester of a single foreign language in college with a passing grade

8. "C" OR BETTER IN ENGLISH AND SPEECH

- A transferable degree does not exempt a student from this requirement.
- A student receiving a "D" or "F" grade in English or speech will have to repeat the course.

9. WRITING COMPETENCY REQUIREMENT

Electronic Writing Portfolio

- Submit three papers written in EIU coursework to EWP.



NEW STUDENT & FAMILY PROGRAMS

Your successful transition to life as an EIU student is important to us. To ensure this success, you will participate in two different programs.

Log onto MyEIU to register for each program.

1. TRANSFER ORIENTATION

We will complete the processes that make you an official EIU student, answer any questions that you have and connect you to life at Eastern. You will meet with an adviser and register for classes.

The sooner you attend a Transfer Orientation, the sooner you will get the courses you want.

2. TRANSITION TO CAMPUS - WELCOME WEEKEND

This program will help you connect and engage in your life at Eastern right away, allowing you to make the most of your time as a Panther.

◆ ORIENTATION DATES:

ENTERING SPRING 2023

- Friday, October 21, 2022
- Monday, November 14, 2022
- Friday, December 2, 2022
- Friday, January 6, 2023

ENTERING SUMMER OR FALL 2023

- Friday, April 14, 2023
- Friday, April 21, 2023
- Friday, April 28, 2023
- Wednesday, June 7, 2023
- Thursday, June 29, 2023
- Monday, July 10, 2023

BE READY TO EXPLORE, ENGAGE AND THRIVE.

Wherever your interests may lead you, we've got a community ready to help you develop them. We have more than 175 registered student organizations, from clubs and Greek life to intramural sports! Can't find exactly what you're looking for? Create your own club and inspire others. You'll also find limitless options to grow through community service, faculty-mentored research and over 600+ study abroad programs. So many opportunities to connect with who you truly want to be!



175+
REGISTERED STUDENT
ORGANIZATIONS

600+
STUDY ABROAD
PROGRAMS



FIND YOUR HOME.



Charleston has plenty to offer for the adventurous student. Go hiking or canoeing in our state park, shop and dine at our downtown square, or enjoy live music over a cup of coffee. Our community invests in EIU and our students to make Charleston your home away from home.



VISIT OPPORTUNITIES

Campus Tours

EIU offers campus tours Monday-Friday and select Saturdays.

Open Houses

Monday, October 10, 2022
Friday, November 11, 2022
Monday, March 27, 2023

Transfer Open House

Friday, February 3, 2023

Virtual Visits

Explore our campus, participate in a virtual session, or meet individually with an admissions counselor, all from the comfort of your own home.

ON THE SPOT ADMISSION DECISION!

If you have earned at least 24 transferable college-level credit hours, we encourage you to visit campus for an immediate admission decision. It's easy!

1. Schedule your appointment.
2. Submit your application for admission.
3. Either send ahead of time or bring with you your official, sealed transcripts from each institution you've attended, including dual-credit coursework.

FOR THE MOST UP-TO-DATE
VISIT INFORMATION

eiu.edu/visit



IAMEIU



@EIU



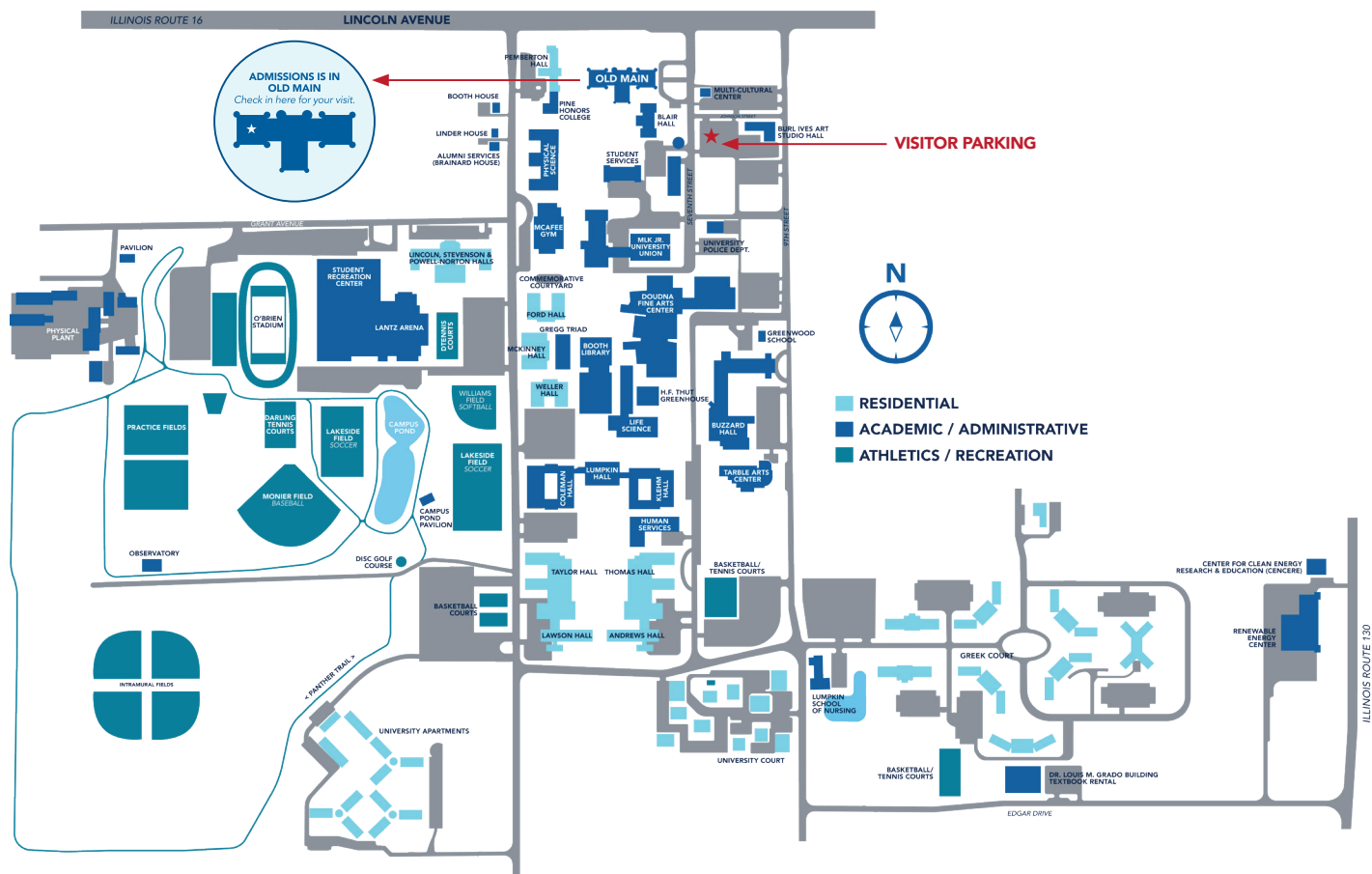
EIU



WEAREEIU

CAMPUS MAP

This campus map should help you find your way around. If you need additional guidance, chances are you'll run into a friendly face who will be more than happy to help you get where you're going. If you have questions, just ask!



OFFICE OF ADMISSIONS

600 Lincoln Avenue
Charleston, IL 61920-3099

Transfer Relations Phone: 217-581-2120

Email: transfer@eiu.edu

MY.EIU.EDU