

COLLEGE OF LIBERAL ARTS AND SCIENCES



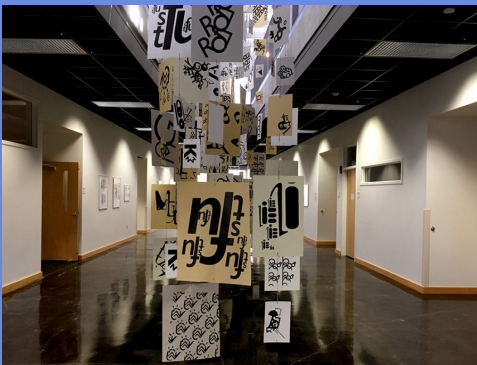
EASTERN ILLINOIS UNIVERSITY™

Exciting *new*
developments
since you last
joined us!

Dr. Anita Shelton, Dean
Dr. Michael Cornebise, Associate Dean
Dr. Chris Mitchell, Associate Dean

NEW SCHOOL!

SCHOOL OF THE ARTS



- Art + Design, Music, and Theatre
- Retaining independence as department units but with dedicated governance structure allowing new pathways for collaboration

ART + DESIGN



- Launch of a newly-created undergraduate student gallery space in DFAC 1910 ("Gallery 1910"). Upgrading is still in progress but the gallery is in full, active use throughout the year.
- Student work visible in 1st floor Art Wing and Passage Galleries as well
- Continuing success of our new Fashion Merchandising and Design program

MUSIC



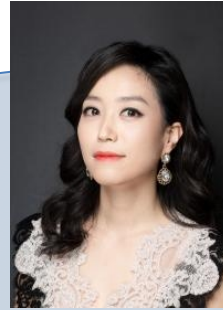
Jennifer Brown



David Boggs



Liza Meyers



Julie Park



Rebecca Johnson



Ellen Hebden

- The BA in Audio and Recording Technology and the new minor in Music Technology are active.
- New hires in Band, Ethnomusicology, Music Education, Trumpet, Violin/Viola, and Voice.
- A new professional ensemble, *Camerata Sinfonettia*
- The department has partnered with the Theatre Department in the creation and launch of the new concentration in Musical Theatre.
- Once again, a season filled with an ensemble for every taste, from wind symphony to opera to jazz.

THEATRE (FORMERLY THEATRE ARTS)



Larry Cox, Jr.



- Modernization of the department's name
- Launch of the new concentration in Musical Theatre, and a hire to support that area.
- Productions in progress:
 - THE MOUNTAINTOP By Katori Hall (October)
 - THE SECRET GARDEN Music/Lyrics by Marsha Norman & Lucy Simon (November)

NEW SCHOOL!

SCHOOL OF COMMUNICATIONS AND JOURNALISM



- Fmr. Communication Studies and Journalism depts. combined into a single academic unit.
- New avenues of collaboration already in progress, in Broadcast Journalism and WEIU TV/Radio
- Housed in Buzzard Hall, which is also home of *The Daily Eastern News* and WEIU TV and FM (“Hit-Mix”)

BIOLOGICAL SCIENCES



Sanghoon Kang



Sam Laingen



- A new University Pre-Health Advisor - Mary “Sam” Laingen:
 - Assisting students with career paths in several careers requiring post-graduate health professional degrees (medicine, pharmacy, dentistry, etc.)
 - Assisting our Clinical Laboratory Science program
 - Actively promoting student success, serving as liaison to administrators and professionals in the health fields, and maintaining and expanding affiliation agreements.

CHEMISTRY AND BIOCHEMISTRY



- New faculty hires in Biochemistry and Physical Chemistry, bolstering curricular and laboratory coverage in those areas.



Michael Beck



David Naistat



Steven Pellizzeri



Tiffany Pellizzeri

ECONOMICS

- Receiving recognition internationally for its curriculum: Professor invited to Ethiopia to help revamp its system of higher education.



Teshome Abebe

ENGLISH

- A new internship agreement with the University of Illinois Press
- New hire in Creative Writing to support curriculum in that area



Bess Winter

GEOLOGY AND GEOGRAPHY



- Near-finalization of an agreement with NIU to have an accelerated Geology B.S. degree (3 years) then acceptance to NIU's law program to end up with a law degree with a Geology background
 - These are correctly identified as Environmental Lawyers, although it will not say that specifically on the terminal degree
 - It will shave a year off the total amount of time/money to obtain both degrees
 - In addition, the Political Science, Journalism, and Philosophy departments have similar agreements, and NIU is interested in expanding to other disciplines.

GEOLOGY AND GEOGRAPHY



- New articulation agreements with
 - College of DuPage, Geography – 2017
 - College of Lake County, Geology and Geography versions – 2018
 - Heartland Community College, Geology and Geography versions – 2019
 - Joliet Community College, Geology and Geography versions – 2019
 - Lincoln Land Community College, Geology and Geography versions – 2018
 - Southwest IL College, Geology and Geography versions – 2018
 - Waubensee Community College, Geology and Geography versions - 2018

HISTORY



Navid Farnia



Mark Dries



- Social Science Teaching is now History with Teacher Licensure in Social Science:
 - Still the same rigorous training in teaching methods, but with a streamlined path to licensure and endorsements in students' choice of social sciences.
- A new hire in the African-American and Latin-American areas

MATHEMATICS AND COMPUTER SCIENCE



Abidalrahman Moh'd



- A change to the math major so that it is one program and no longer has 2 options
- A new hire in Computer Science to bolster the curricular offerings there

PHILOSOPHY



- The Department has refashioned its BA curriculum to be a 30-hour, transfer/double-major-friendly degree program
- A new 39-hour option in Integrative Studies, of which 15 hours are outside the Department
- A new interdisciplinary minor in Ethics (18 hours), designed to integrate well with many majors

POLITICAL SCIENCE



Ryan Burge



Trisha Miller



Erin Rowland



Model Illinois Government

- New hires in Political Science to bolster the curricular offerings in American Politics, Government, and Public Policy.

PHYSICS

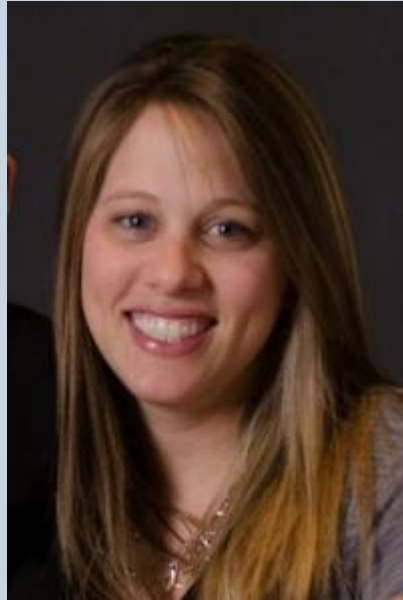


- Launch of the new Electrical Engineering program, accepting students for fall 2020
- Near-completion of a donor-funded, state-of-the-art tutorial room, scheduled to be dedicated in November 2019
- The department now hosts the State Academic Challenge (formerly WYSE), a prestigious competition. Formerly hosted by the University of Illinois

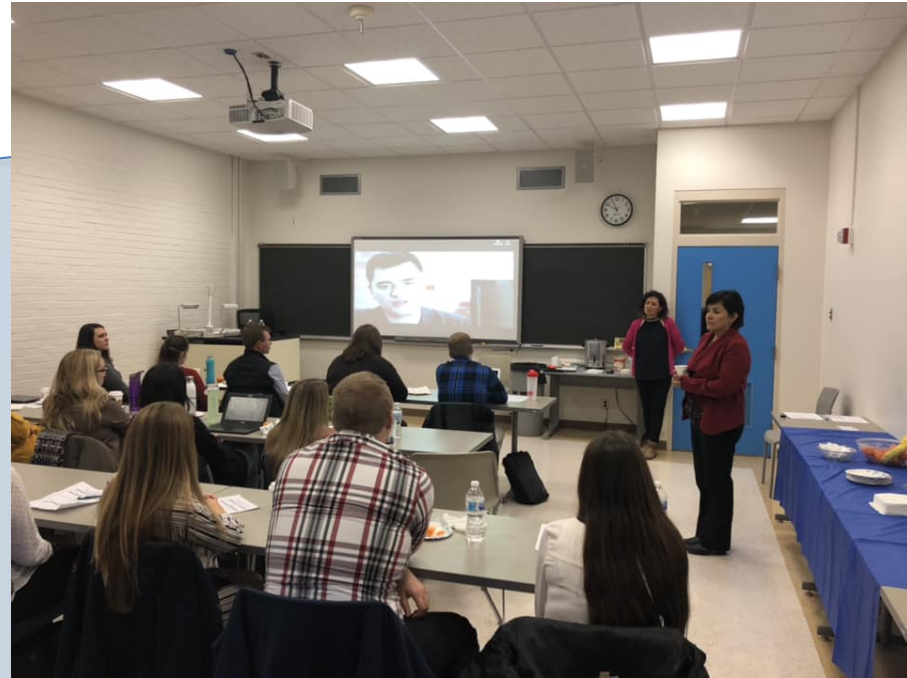
PSYCHOLOGY



David Towers



Anne Walk



- New hires to bolster curricular offerings in departmental areas such as Neuroscience

SOCIOLOGY, ANTHROPOLOGY and CRIMINOLOGY



Sociology and Anthropology Club Members



Don Holly Performing Fieldwork in Newfoundland

- Criminology program has seen large influx of students in the past year

WORLD LANGUAGES AND CULTURES



- Formerly the Department of Foreign Languages
- Modernization of Department/Degree name and revision of curriculum



New Science Collaborations: iStem

- Brings together students from underrepresented groups in the STEM disciplines and faculty committed to encouraging and empowering these students.
- Faculty serve as mentors, and the group meets regularly to foster networking, social and professional engagement.

MEI: “Making Excellence Inclusive”

- A high-energy collective composed of faculty and staff from across campus
- Dedicated events throughout the year to nurture a more inclusive and welcoming community

On-Campus Celebrations and Commemorations

- Heritage months
 - Latin American – September *IN PROGRESS!*
 - African-American - February
 - Asian – April
 - Dynamic speakers and colloquia, fun events, widely attended
- The 400th — *IN PROGRESS!*



Our world-class arts facilities are constantly humming...

- Doudna Fine Arts Center eiu.edu/doudna
 - Next premier event: CHURCHILL — A ONE-MAN PLAY (Nov)
- Tarble Arts Center eiu.edu/tarble
 - Exhibit in progress: Federico Solmi, *The Grand Masquerade* (until Oct 6)
 - Exhibit in progress: Nicolás Guagnini, *Twilight of the Idols* (until Dec 8)
 - Exhibit in progress: *In Conversation: Anne Vieux + Chris Kahler + Erin Rice + Morgan Calabrese* (until Oct 6)

COLLEGE OF LIBERAL ARTS AND SCIENCES



EASTERN ILLINOIS UNIVERSITY™