



# EASTERN ILLINOIS UNIVERSITY

**50<sup>th</sup> Annual Community College  
Articulation Conference**



# Dr. Jay Gattrell

## President



Eastern Illinois University



**RITA PEARSON**

Transfer Coordinator

# INTRODUCING



**BRIANNA  
BARTOSZ**  
Southern Illinois,  
Indiana & Missouri



**RYAN HOWARD**  
Central Illinois



**ALLISON KLOTZ**  
Regional Suburban  
Chicago  
& Northern Illinois



**SHIJUANA  
SHANNON**  
Regional Chicago  
City Colleges of  
Chicago

# EIU ALUMNI



# PACKETS

[go.eiu.edu/articulation](http://go.eiu.edu/articulation)

- Agenda
- Transfer Guide
- Transfer Checklist
- Substitution List
- Progress Report
- Departmental information
- Transfer Handbook
- Counselor Update

# PANTHER PLEDGE

## Guaranteed Admission Program

- **Transfer Planning & Advising**
- **Seamless Transfer**
- **Simple process**
  - Sign up at [eiu.edu/pantherpledge](http://eiu.edu/pantherpledge)
  - Earn an associates degree
  - Earn a 2.0 GPA





# TRANSFER SCHOLARSHIPS

---



# TRANSFER ACADEMIC EXCELLENCE

## Tier 1: \$5,000 Over 2 years

\$2,500 per year divided between fall/spring semesters. Must have minimum 15 transferable hours and a 3.5-4.0 cumulative GPA. Full-time enrollment is required. All majors are eligible.

## Tier 2: \$3,000 Over 2 years

\$1,500 per year divided between fall/spring semesters. Must have minimum 15 transferable hours and a 3.0-3.49 cumulative GPA. Full-time enrollment required. All majors are eligible.



# STUDENT SUCCESS & ENGAGEMENT

---

- \$1,000
- Not eligible for the TAE
- Demonstrate Leadership and Involvement
- Commitment for Involvement at EIU
- Renewable with EIU 2.5 GPA or better and narrative describing EIU engagement



# PHI THETA KAPPA

---

- \$1,000 one-time award
- Phi Theta Kappa Members
- Awarded for Fall admission
- Associates degree required
- Minimum GPA of 3.5



# HONORS TRANSFER SCHOLARSHIP

---

- \$2,500 per year
- Competitive award
- Transfer GPA of 3.5
- At least 18 hours of transfer institution's Honors Program
- Applications due by June 1st
- Renewable for second year
  - Participating in EIU Honors
  - EIU GPA of 3.4



# EIU PROMISE

---

- Reduce the cost of remaining tuition and fees to \$0.00
- Illinois resident
- Family gross income of \$66,000 or less
- Admitted to EIU as full-time student
- Packaged financial aid by June 1
- Minimum of 3.0 GPA
- Meet AIM HIGH requirements



# PANTHER PROMISE

---

- \$2,500 renewable
- FAFSA must be filed
- Annual household income from \$55,000 to \$100,000
- Maintain full-time, consecutive enrollment
- Maintain 2.0 GPA or better
- Automatically awarded if criteria is met



# OPEN HOUSE PROGRAMS

[eiu.edu/visit](http://eiu.edu/visit)

- October 9, 2023 (Monday)
- November 10, 2023 (Friday)
- April 5, 2024 (Friday)
- June 24, 2024 (Monday)





# MATERIALS

## EIU TRANSFER STUDENT CHECKLIST

We put together this guide to help you with your journey toward the first day of class. The information on this checklist and [my.eiu.edu](http://my.eiu.edu) will help you stay on track during the days ahead. We're committed to your success, so let's do this together.

### 1. PLANNING

- Work with advisor at primary college on transfer curriculum.
- Work with your college's career services office prior to transferring.
- Work with EIU Transfer Relations for pre-transfer academic assessment.
- Create an account and register in MyEUI: [my.eiu.edu](http://my.eiu.edu)

### 2. VISIT US

- Visit Eastern and take a tour prior to enrollment. Student-led walking tours are offered Monday-Friday at 10 a.m. and 2 p.m. Transfer-specific tours are offered every Friday at 11 a.m.
  - Visit [admissions.eiu.edu](http://admissions.eiu.edu) or call the Office of Admissions at 217-581-2223 for additional information.
  - Schedule an appointment to meet with a transfer counselor for an unofficial credit evaluation.
  - Attend an Open House.
- Open House Programs**  
 Saturday, September 16, 2023  
 Monday, October 9, 2023  
 Friday, November 10, 2023  
 Friday April 5, 2024  
 Monday, June 24, 2024
- Visit [eiu.edu/visit](http://eiu.edu/visit) for the full schedule of visit opportunities.

### 3. APPLY

- Apply early! We begin assessing applications one year prior to enrollment. For an online application, visit [eiu.edu/apply](http://eiu.edu/apply)
- Have final official high school transcript showing date of graduation and/or GED scores sent.
- Have official college transcripts sent from [sacab](http://sacab) college attended for admission decision.
- Have updated and final official college transcripts sent.

### TRANSFER ADMISSIONS REQUIREMENTS:

**24+ SEMESTER HOURS**  
 2024 Overall: AND 2.0/4.0 from last co-lege attended.  
 OR  
**FEWER THAN 24 SEMESTER HOURS**  
 2024 Overall: AND 2.0/4.0 from last college attended.  
 AND  
 Most the following high school admission criteria:  
**TEST-OPTIONAL: 2.5/4.0 GPA**  
 OR  
**TEST-REPORTED: 2.5/4.0 GPA AND 960 SAT OR 18 ACT**

### 4. FINANCIAL AID & SCHOLARSHIPS

- Complete the Free Application for Federal Student Aid (FAFSA), using last year's taxes, as soon as [studentaid.gov](http://studentaid.gov). (EUI FAFSA code: 001674)
- Eligible students can complete the Alternet soon as it is available at [eiu.org](http://eiu.org)
- Apply and be admitted to EIU as early as possible to receive financial assistance.
- Mid-year transfers call 1-800-4-FED-AID.
- Transfer scholarships: [eiu.edu/scholarship](http://eiu.edu/scholarship)

### 5. HOUSING

- Once admitted, apply for on-campus housing MyEUI account: [my.eiu.edu](http://my.eiu.edu)
- If living off campus, begin housing search prior to enrollment.

### 6. CAREER SERVICES

- Once admitted, contact Career Services at [eiu.edu/careers](http://eiu.edu/careers) to get assistance with major selection, job shadowing, resume preparation for the upcoming EIU enrollment.

### 7. REGISTER

- Sign-up for an Orientation date through [my.eiu.edu](http://my.eiu.edu)
- Complete the online Academic Orientation. Then your Academic Advisor will contact you for advisement and registration.
- Online majors will be contacted by the advisor, orientation, and registrar.
- Attend the mandatory Transfer Orientation. Have registered for classes to connect resources and find your classrooms.
- Visit [eiu.edu/nsp](http://eiu.edu/nsp) for more information.
- Submit final official transcripts from last institution.
- Return Immunization Form (available in [my.eiu.edu/health/IMForm.pdf](http://my.eiu.edu/health/IMForm.pdf)) to EIU Health & Wellness.

### 8. YOU'RE HERE!

- Move in to residence hall or apartment on campus.
- Complete Alcohol, EDU, sexual assault prevention, and well-being online requirements.
- Check your Panther Mail about Welcome Week events.
- Pick up textbooks at Textbook Rental Service before class. Textbooks may be mailed to students enrolled in online/off-campus courses.
- Get involved and make connections through the many organizations on campus.
- Apply for graduation during your junior year to receive degree audit that includes transfer credit, waivers, and remaining requirements for degree completion.

# EASTERN ILLINOIS UNIVERSITY

# TRANSFER STUDENT HOUSING

## TOP TEN REASONS TO GO TO EASTERN ILLINOIS UNIVERSITY



If you have any questions, contact the Office of Admissions at 217-581-2223 or email [admissions@eiu.edu](mailto:admissions@eiu.edu).

### 1. YOU'LL GET A GREAT EDUCATION THAT'S ALSO AFFORDABLE

EIU was ranked 4th in the nation for best value by College Consensus in 2022. We have the lowest cost of attendance of any Illinois public university, and the average student receives over \$14,000 in financial aid.



### 5. YOU'LL FIT IN

EIU offers more than 125+ student clubs and organizations and a thriving student life community, so you'll be sure to make connections and friends.

### 6. YOU'LL SAVE \$1200 A YEAR WITH TEXTBOOK RENTAL

Plus you won't have to deal with the hassle of hunting down and then reselling textbooks every semester.

### 2. YOU

At EIU, teach faculty and a

### 3. YOU

With teach outside post-



# OPEN HOUSE

EXPERIENCE EASTERN ILLINOIS UNIVERSITY

**OPEN HOUSES**  
 SATURDAY, SEP. 16, 2023  
 MONDAY, OCT. 9, 2023  
 FRIDAY, NOV. 10, 2023

**ON-CAMPUS ADMIT DAY**  
 FRIDAY, DEC. 8, 2023

**CAMPUS TOURS** | EIU offers campus tours Monday-Friday and select Saturdays.



**SIGN UP HERE!**



[eiu](https://www.facebook.com/eiu) [weareeiu](https://www.instagram.com/weareeiu) [weareeiu](https://www.youtube.com/weareeiu) [iameiu](https://www.linkedin.com/company/eiu) [eiu](https://www.tiktok.com/eiu)

[eiu.edu/visit](http://eiu.edu/visit)

**SCHOLARSHIPS**  
 WILL BE RAFFLED OFF AT EVERY FALL OPEN HOUSE!



Eastern Illinois University



# JOSH NORMAN

Vice President for Enrollment Management



Eastern Illinois University

# College of Liberal Arts & Sciences



EASTERN ILLINOIS UNIVERSITY™

**Exciting new  
developments  
since you last  
joined us!**

Dr. Barbara Bonneken, Dean  
Dr. Michael Cornebise, Associate Dean  
Dr. Chris Mitchell, Associate Dean

College of Liberal Arts  
& Sciences



EASTERN ILLINOIS UNIVERSITY™

**ARTS AND HUMANITIES**

# DEPARTMENT OF ART + DESIGN

---

- Laura O'Donnell was hired as our new Ceramics Instructor for Fall 2023. She brings expertise and leadership to the undergraduate and graduate program.
- Melanie Fisher was hired as one of our Foundations instructors for Fall 2023. She brings expertise and leadership to the undergraduate program.
- We are seeing growth in all majors.
- In Spring 2023 we had our NASAD Campus Visit for re-accreditation.



Laura O'Donnell  
Ceramics



Melanie Fisher  
Foundations

# DEPARTMENT OF ART + DESIGN

---

## Transfer Student Information

- The Department Chair, Chris Kahler, welcomes all inquiries about any classes you are uncertain will transfer in. We want to make sure students have access to our degrees and we are committed to being transfer friendly.
- In multiple cases, we have had faculty look at class syllabi to determine if further classes can be substituted into the degree from a student's transcript.
- Contact info for Chris Kahler is: [cbkahler@eiu.edu](mailto:cbkahler@eiu.edu) and the phone number is 217-581-3410





# DEPARTMENT OF ENGLISH

---

## What's New

- We welcome this year a new faculty member in creative writing: poet, fiction writer and essayist, Amie Whitemore, former poet laureate of Murfreesboro, TN.
- We are making a push to increase our number of articulation agreements this year.



# DEPARTMENT OF ENGLISH

---

## What Transfer Students Should Know

- As long as they meet the basic requirements for transfer, we WILL work to count all English classes taken at the community college in the major requirements. Courses that don't match automatically are manually placed.
- Just like some of our (larger and more expensive) neighbors, EIU English offers multiple concentrations:
  - Teacher certification
  - Literature
  - Professional writing
  - Creative writing

# DEPARTMENT OF HISTORY

---

- New Courses for Fall 2023
  - HIS 2030G: US History: The Black Experience
  - HIS 2040G: US History: Gender and Sexuality
  - HIS 2050G: US History: Building Latin/a/e Communities
  - HIS 2060G: US History: This is Your Life
  - HIS 1527G: Gaming the Past (Historical Roleplaying Games!)
- New Curriculum for Fall 2023
  - Refreshed introduction to historical studies for all majors
  - Inclusive history component for all majors

# TRANSFERS STUDENTS & HISTORY

---



Course offerings that satisfy diverse interests



Career preparation, including internship opportunities and transferable skills curriculum



Three options: History, History with Teacher Licensure, and History with International Studies



Great career and graduate school placements



# DEPARTMENT OF MUSIC

---

We are thrilled to welcome several new faculty this year!

- Howard Eckdahl, Director of Choral Activities
- Shichao Zhang, piano
- Kevin Michael Jones, voice

With our post-Covid rebound, we had another excellent recruitment year with first-time freshmen and transfer students.

New BA in Audio and Recording Technology is proving to be popular with transfer students.

We are always happy to work on articulation agreements with your programs!



# DEPARTMENT OF MUSIC – MUSIC AUDITIONS

---

All prospective music students need to complete a Full Audition or Musical Skills Assessment to be fully admitted to the department.

The Musical Skills Assessment is a new procedure, and just for those students interested in the BA in Music programs.

- During the Musical Skills Assessment, students will be asked to perform a short excerpt on an instrument or voice, describe their background in music, and complete an aural skills evaluation. It can take place in person or via Zoom.



# DEPARTMENT OF PHILOSOPHY

---

## Integrated Study Option

24 hours in Philosophy

39 total option hours using  
15 hours of non-philosophy  
electives: 15 hours from any  
other major!



# DEPARTMENT OF PHILOSOPHY

---

Double major in Philosophy!

- 24 hours in philosophy
- Competitive advantage
- 2 courses more than most minors

Contact Philosophy for  
details: [jmdepetro@eiu.edu](mailto:jmdepetro@eiu.edu)





# SCHOOL OF COMMUNICATION & JOURNALISM

- Welcoming a new journalism professor: Diego Aparicio
  - Specializes in Hispanic audiences and multiplatform storytelling
  - Spent the last two decades in multiple news roles in print, TV and digital-first newsrooms such as The Denver Post, The Dallas Morning News, & Univision
  - Led a news team that won an EPPY Award for best Spanish-language news website
  - Has been teaching and advising student journalists since 2018 and is an award-winning student media advisor
- New Video Production Spaces Available to Students
  - The Multi-Cam Production Suite
  - The Audio and Voice Lab
  - The Post-Production Suite (available in the coming weeks)



# DEPARTMENT OF THEATRE

## Quick Facts

- 50 Majors and Minors
- 6 Faculty and Staff
- BA in Theatre
  - Musical Theatre Performance
  - Performance
  - Tech and Design
  - Dramatic Writing
  - Generalist
- Department Produces 5-7 Productions Annually
- 3 Performance Venues within Theatre Wing of the Doudna Fine Arts Center
- Fully Appointed Scenic, Costume, Design, and Performance Lab Facilities

Contact Nick Shaw – Chair and Professor @ [neshaw@eiu.edu](mailto:neshaw@eiu.edu) with any questions or to schedule a departmental visit

## DEPARTMENT OF THEATRE EASTERN ILLINOIS UNIVERSITY™

### 2023-2024 Season

**The 39 Steps**  
September 28-October 1  
Black Box

**Children of Eden\***  
November 2-5/10-12  
The Theatre

**EIU Dancers-Dance Concert**  
February 9-10  
The Theatre

**Dead Man's Cell Phone**  
March 7-10  
The Theatre

**John and Jen**  
April 11-14  
Black Box

Thursday, Friday, and Saturdays at 7:30pm  
Sunday Matinees at 2:00pm

Non-Premiere Tickets 5/15\$  
\*Premiere Musical Tickets 15/20/25\$

# DEPARTMENT OF WORLD LANGUAGES & CULTURES

---



Double Majors on the rise!

Popular combinations:

- Spanish & CDS, Psychology, Sociology, or Business
- French & Political Science
- German & Communication Studies or Philosophy and more

Especially easy for students with...

- 3+ years language study in High School
- Illinois Seal of Biliteracy
- Heritage speakers (credits via proficiency exams)

# DEPARTMENT OF WORLD LANGUAGES & CULTURES

---



## Spanish for the Health Professions

- WLS 3012 Medical Spanish for Healthcare and Allied Fields (every Spring)
- WLS 1112 Spanish for the Health Professions (every semester, online)
- American Sign Language: WLA 1101 (Fall) & 1102 (Spring)

Study Abroad: New faculty-led program to France (Summer 2024)

Vibrant new spaces in Coleman Hall: Latinx & Spanish Language Academic Hub, and more



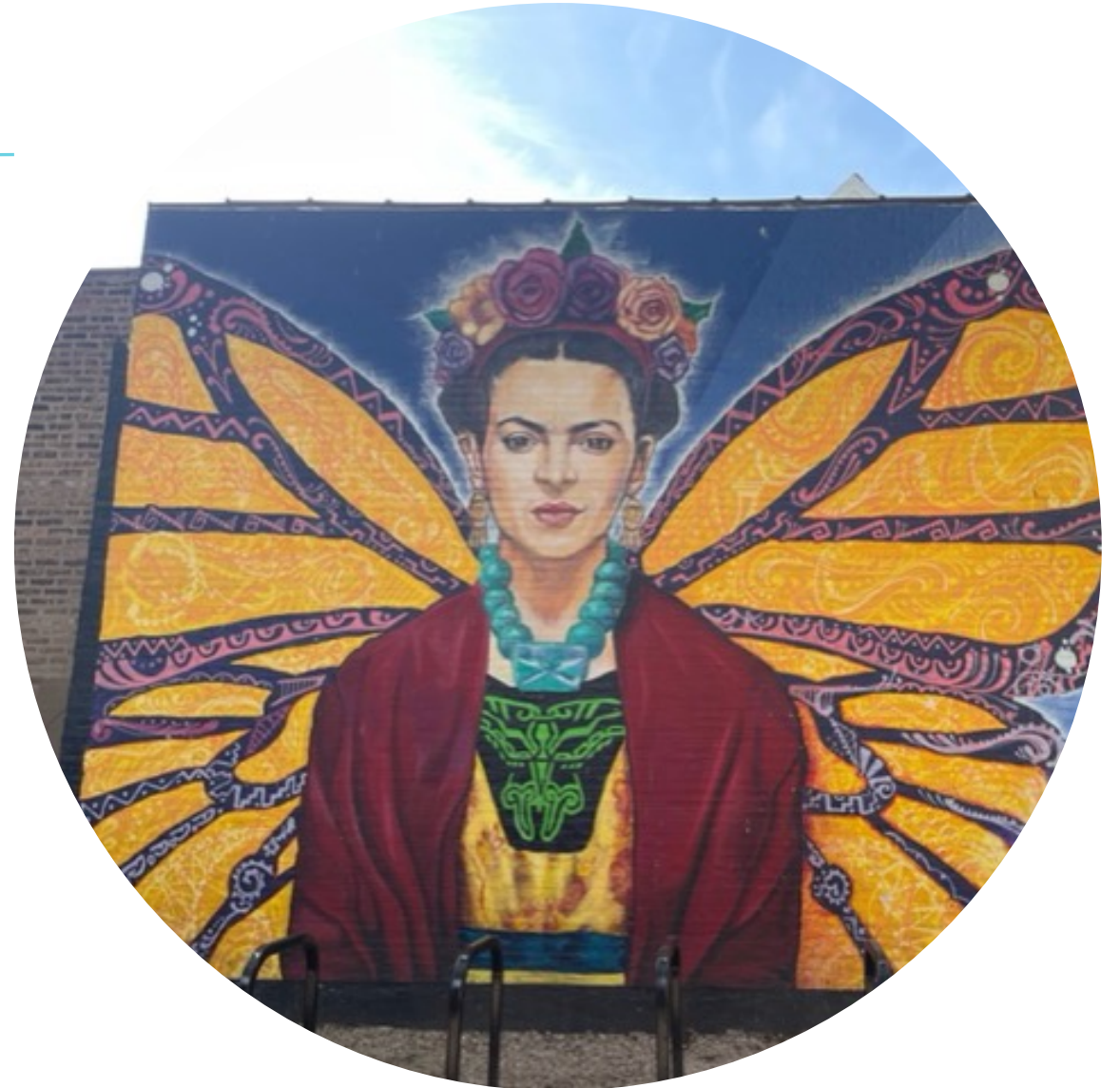
# LATIN AMERICAN & LATINX STUDIES

---

We explore the history, politics, arts, languages, and cultures of Latin America and of communities in the U.S. with Latin American roots.

Choose your courses: History of Latine Communities in the U.S.; Business Spanish; Geography of Mexico, Central America, and the Caribbean; Latin American Cinema, and more.

Many courses fulfill general education requirements or double-count towards additional majors and minors.





doudna

FINE ARTS CENTER

**15 YEAR CELEBRATION!**

**2023-2024 PREMIER EVENTS**

## GALA CELEBRATION

**SATURDAY, SEPTEMBER 9, 2023 @ 5pm**  
Join us to celebrate 15 years of Doudna!

**DINNER & DRINKS ON THE THEATRE STAGE**  
5:00pm

**A CIRQUE NIGHT OUT**  
IN THE DVORAK CONCERT HALL  
6:30pm

**GALA RECEPTION WITH FOOD, DRINKS**  
& **LIVE ACROBATICS IN THE DOUDNA CONCOURSE**  
7:30pm

**TICKETS \$125.00**  
*(Please be sure to purchase the Gala Package)*

*\*Become a Dvorak Level Friend of Doudna and Get 2 free tickets to the Gala and performance!*

## A CIRQUE NIGHT OUT

SHOW ONLY TICKETS ALSO AVAILABLE

Come and witness the high flying spectacle featuring performers from the Boston Circus Guild. The Boston Circus Guild is a collaborative membership-based organization of over fifty musicians, artists, circus performers, dancers, and event producers from the New England area.

**Saturday, September 9, 2023 @ 6:30pm**

## The Second City

# COMEDIAN Rhapsody

The Second City is the premier brand in improv-based sketch comedy and education dedicated to entertaining, inspiring, and transforming through courageous comedy. Famous alums include Tina Fey, Steve Carell, Harold Ramis, Quinta Brunson, Aidy Bryant and Keegan-Michael Key to name a few.

**Friday, September 22, 2023 @ 7:30pm**

New + Emerging Artists Series




## ABILENE

Abilene is a collective of artists whose cinematic compositions marry classical and modern elements with an emphasis on narrative storytelling.

Through experience, they have discovered that the use of electronics, percussion, household items, and singing on top of traditional textures is engaging, timely, and allows for imaginative narrative through compositions


**Saturday, October 14, 2023 @ 7:30pm**



# CHILDREN OF EDEN

From musical theatre greats, Stephen Schwartz and John Caird, comes a joyous and inspirational musical about parents, children and faith... not to mention centuries of unresolved family business!

**November 2-4 & 10, 11, 2023 @ 7:30pm**  
**November 5 & 12, 2023 @ 2:00pm**



# Messiah

Handel's Messiah is the most famous, most-performed oratorio in all of history - telling the story of the birth and life Jesus. With full orchestra, mass choirs, and vocal soloists, the Messiah is an immersive dramatic experience that has thrilled millions of listeners and musicians since its premiere in 1742. This is a concert you don't want to miss!

**Friday, December 1, 2023 @ 7:30pm**  
**Sunday, December 3, 2023 @ 4:00pm**

THE LIVE LED ZEPPELIN TRIBUTE SHOW

# KASHMIR

Kashmir, the nation's #1 Led Zepplin tribute show, is the most authentic representation of Led Zepplin on the modern national touring scene. Each of the 4 band members assumes their individual role with pinpoint accuracy. Kashmir possesses the live stage show, sound, and likeness to bring audiences and fans back to the days when the mighty Led Zepplin ruled the musical landscape.

**Friday, January 19, 2024 @ 7:30pm**



## FRED HERSCH

64TH ANNUAL JAZZ FESTIVAL

A fifteen-time Grammy nominee, Fred Hersch is a pervasively influential creative force who has shaped the music's course over more than three decades as an improviser, composer, educator, bandleader, collaborator and recording artist. He has been proclaimed "the most arrestingly innovative pianist in jazz over the last decade" by Vanity Fair, "an elegant force of musical invention" by The L.A. Times, and "a living legend" by The New Yorker.

**Friday, February 2, 2024 @ 7:30pm**

## CHICAGO DANCE TAP

"UNLEASH THE BEATS"



A celebration of Tap Dance and Live Music from the 1920s to the future! Chicago Tap Theatre presents this celebration of the best in tap dance, from historical pieces from the past to the innovative and compelling original work for which the company is known. High production values and dynamic performances are the hallmark of this family-friendly, accessible show.

**Saturday, February 17, 2024 @ 7:30pm**


## MARIELLE KRAFT



When you hear Marielle Kraft's music or experience her candid live shows, you feel as though you already know her. The indie pop singer/songwriter, now based in Nashville, displays craftsmanship beyond her years, following suit to artists like Shawn Mendes, Maisie Peters, and Taylor Swift.

**Saturday, March 2, 2024 @ 7:30pm**

Classical Music Artists Series



## WINDSYNC

WindSync has established itself as a vibrant chamber ensemble performing wind quintet masterworks, adapting beloved music to their instrumentation, and championing new works by today's composers. This personal performance style, combined with the ensemble's three-pronged mission of artistry, education, and community-building, lends WindSync its reputation as "a group of virtuosos who are also wonderful people, too" (Alison Young, Classical MPR).

**Thursday, March 28, 2024 @ 7:30pm**

## RED HOT CHILI PIPERS



It's Bagpipes. It's Rock. It's Bagrock. AC/DC meets the poet Robert Burns where rock anthems sit comfortably alongside the great tunes from the glens and the mountains of Scotland.

It's The Red Hot Chilli PIPERS - (NOT the Peppers!) - a 9-piece ensemble consisting of pipers, guitarists, keyboards, and drummers - who have been rocking the world from New York to Beijing to Melbourne and everywhere in between.

**Saturday, April 6, 2024 @ 7:30pm**

# Tarble Arts Center

With an **artist-centered approach**, the Tarble presents an annual program of rotating exhibitions that provide experiential encounters with art of international significance and local relevance.








An onsite Collection Lab, Design Lab, and Education Lab are hubs for transdisciplinary activity, positioning art as a primary tool for research, advancing knowledge, and interpreting the world we live in. The outcomes of this experimentation produce projects, publications, and opportunities that reach EIU students, community members, regional partners, and international collaborators both in the museum and wherever they are.

The Tarble's ongoing stewardship of a permanent collection of contemporary art, American Regionalism, and folk art provides opportunities for study and reflection to students of all ages.



To learn more, visit [tarbleartscenter.org](http://tarbleartscenter.org)

# Tarble Arts Center

   TheTarble

## Gallery Hours:

Thu–Fri: 10am–5pm\* | Sat: 1–5pm\*  
Mon–Wed: by appointment only  
Closed Sundays, EIU holidays and breaks,  
and during installation periods  
*\*Last entries at 4pm*

**FREE**  
gallery admission  
and visitor parking

College of Liberal Arts  
& Sciences



EASTERN ILLINOIS UNIVERSITY™

**SCIENCES AND SOCIAL  
SCIENCES**

# DEPARTMENT OF BIOLOGICAL SCIENCES

---

## Personnel Updates



Dr. Elizabeth (Liz) Peterson is our new Wildlife Ecologist. She is teaching Wildlife Techniques (BIO 4850) as well as Mammalogy (BIO 5460Y) this fall.



Dr. Thomas (Tom) Hu is a new instructor to primarily teach our Anatomy and Physiology coursework. He is teaching BIO 1001G (Bio Principles/Issues) and BIO 2220 (A&P II) this fall.



Mary "Sam" Laingen is our full-time, pre-health professions advisor working with ALL majors (across campus) pursuing admission to a professional health program.

Mary "Sam" Laingen, MS, AT  
Ret  
University Pre-Health  
Professions Advisor  
2072 Life Sciences Building  
217-581-6235  
mclaingen@eiu.edu  
www.eiu.edu/prehealth



Tom Canam is the new department chair of Biological Sciences. Please contact Tom or Sam for any questions about our programs or transferable coursework. Feel free to visit us at any time!

Tom Canam, Ph.D.  
Chair and Professor  
2070 Life Sciences Building  
217-581-6608  
tcanam@eiu.edu  
www.eiu.edu/biology

# DEPARTMENT OF BIOLOGICAL SCIENCES

---

## Transfer Student Updates & Advice

- Our majors now must take BIO 3330 (Intro to Botany) OR BIO 3340 (Intro to Zoology) OR BIO 3300 (General Microbiology)  
NOTE: Transfers may have a microbiology that will be the equivalent of BIO 1004G (Practical Microbiology) but will still need to take one of the above options to complete their EIU degree.
- Transfer students should consider “saving” general education courses to balance future schedules with lab courses if not completing their associate’s degree.
- Transfers should consider options for minors if completing associate’s degrees so they have other coursework to balance lab courses – can be related or totally separate from sciences.
- Clinical Lab Sciences degree has 100% acceptance rate (last four years) for students who completed prerequisites and earned >3.0 GPA.

# DEPARTMENT OF CHEMISTRY & BIOCHEMISTRY

## BS Degrees in

- Biochemistry (ACS certified)
- Chemistry (ACS certified)
- Chemistry Management
- Science with Teacher Licensure

## B.A. in Chemistry

66 credits of chemistry (8 courses beyond gen & org chem)

## Accelerated BS/MS and BA/MS (5-year program)

need to decide this no later than 2nd semester junior year

## Minors

- Chemistry (21 credit hours)
  - 2-3 courses beyond gen & organic chem
- Biochemistry (24 credit hours)
  - 3 courses beyond gen & organic chem

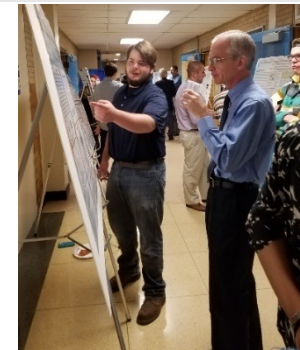
Ability to pursue Pre-health option, as well as Departmental Honors

BA allows for students to more easily double major



Very active research that involves undergrads (students co-authors on peer-reviewed publications and/or present at regional or national meetings)

2 Registered Student Organizations (ACSSA, ASBMB)



## Tentative Summer Chemistry offerings

Gen Chem II and Gen Chem II lab  
Biochemistry I lecture (online)

# DEPARTMENT OF CHEMISTRY & BIOCHEMISTRY

---

## Incoming transfer information

- Will be good if have completed up through Calc II and Physics II (lab and lecture) beforehand, if trying to finish in 2yrs at EIU with a BS Chem/BS Biochem degree
  - If can't get both done, calculus over physics for preference
  - Though not preferred, will accept non-calculus based Physics in lieu of calculus-based Physics
  - Even finishing these in summer before starting at EIU can be helpful
- If BS Biochem, having already taken BIO 1500 (Gen Bio I) is good
- Be sure are taking year-long not 1-semester general chem and organic courses
  - (Science Teacher cert student and BS Chemistry, Management can take only the 1-semester organic)
  - Should not be taking a GOB (general/organic/biochem course) unless as prep for year long general chemistry course
- Most transfers do not come in with CHM 2730 Quantitative Analysis – this is ok
- Science Teacher Cert, Chemistry majors should come in with organic complete

# DEPARTMENT OF ECONOMICS

---

- New Department Chair: Dr. Linda Ghent
- Curriculum recently updated and simplified
  - Students can declare the major at any time (no hours requirement)
  - ECN 2801G (Principles of Macro) and ECN 2802G (Principles of Micro) may be taken in any order
  - Several 3000-level economics electives have no prerequisites
  - Added BUS 1950 as a requirement
- Adding after-hours programming for students on Financial Literacy
  - All majors welcome!

# DEPARTMENT OF GEOLOGY & GEOGRAPHY

- The Department of Geology and Geography offers Three Degree Programs
  - B.S. in Geography
    - Environmental/Physical Geography Option
    - Human Geography Option
  - B.S. in Geology
  - B.S. in Science Teacher Licensure with Earth Science Specialization
- The Department is also home to three interdisciplinary minors
  - Broadcast Meteorology
  - Geographic Information Systems (GIS)
  - Environmental Impact and Sustainability
- We are happy to work with you on new articulation agreements!



Field Methods students surveying changes along the Kickapoo Creek



Dr. Lewandowski's Paleontology Class conducting field work in Southern Indiana



Broadcast Meteorology student Will Redden receives valuable experience as a forecaster on WEIU Newswatch



# DEPARTMENT OF GEOLOGY & GEOGRAPHY

## What Transfer Students Can Expect:

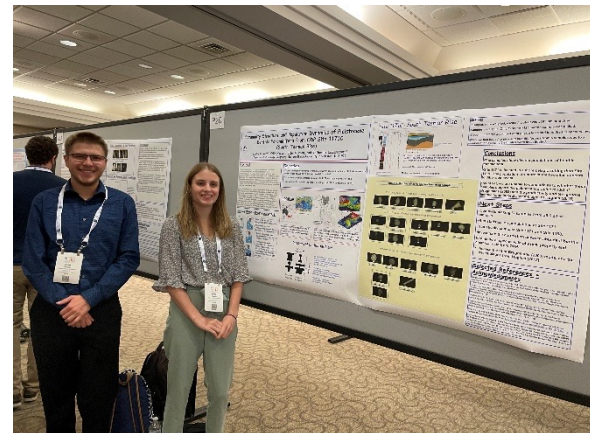
- Academic Programs that are focused on student success in the classroom and after graduation.
- Hands-on field & laboratory experiences
- Geology students will complete a summer field camp requirement. The Department will help place them in a program.
- The latest in mapping software & field research equipment
- Opportunity for collaborative research with their professors.



Surface Water Processes and Resources class touring the Charleston Water Treatment Plant



Geography students working in the GIS lab



Collin Houser and Lydia Howard presenting research at the North-Central Geological Society Conference



Freshman Weather Analyst Emily Davis Records Daily Weather Observations at the NWS/EIU Weather Station

# DEPARTMENT OF MATHEMATICS & COMPUTER SCIENCE

---

- Three avenues for math placement, including High School GPA with math courses taken
- Three majors – B.A in Mathematics, B.A. in Mathematics for Teacher Licensure, B.S in Computer Science
- Four Minors- Computer Science, Computer Science Teacher Licensure, Mathematics, Mathematics Teacher Licensure
- Completely online graduate program in Mathematics Education
- RSOs for mathematics majors & computer science majors

# DEPARTMENT OF MATHEMATICS & COMPUTER SCIENCE

---

## Transfer Student Information

- All programs begin with Calculus I
- New *Introduction to Computer Science* course option for students
  - Computer Science majors without Calculus I can take the course to prepare for *Computer Science I* course
  - Other majors can take to fulfill computer science requirement.

# DEPARTMENT OF PHYSICS

Research with Faculty  
Paid summer internships doing mentored research with faculty. Often resulting in presentations at national scientific conferences.



Student researchers at the APS Spring Meeting in Las Vegas



New faculty:  
Dr. Robert  
Strausbaugh

An Astronomer who is taking over the teaching as well as outreach through our on-campus Observatory

Electrical Engineering Program  
EE continues to grow at EIU. A new senior capstone course (Senior Design) recently launched



Luis Torres Cantu, a transfer student, was among our first graduating EE class in May 2023

# DEPARTMENT OF PHYSICS

---

## Transfer Student Information

### Needed Preparation in Physics

- Transfer students should have taken Calculus and Calculus Based Introductory Physics prior to arrival
- Alternate preparations are accepted and our faculty will work with you to create a path to graduation

### Needed Preparation in Electrical Engineering

- This is a demanding curriculum that will challenge and reward all students
- Optimally, transfer students should have taken Calculus and Calculus Based Introductory Physics prior to arrival
- Other Science, Math, and Engineering courses can help in the transition
- Alternate preparations are accepted and our faculty will work with you to create a path to graduation



### Outcomes

- High demand for technical fields (especially EE grads)
- Graduate School opportunities
- Successful transfer record for Pre-Engineers

# DEPARTMENT OF POLITICAL SCIENCE

---

## New Course: Political Science Forum

All new 1<sup>st</sup> year and transfer students are required to take the course to learn about the major, careers, research, internships, and resources



Our Award-Winning Moot Court  
Team



New faculty:  
Dr. Jin Hong Kim

She teaches public policy, public affairs, city management, and government and nonprofit budgeting

# DEPARTMENT OF POLITICAL SCIENCE

---

## Transfer Student Information

- Flexibility
  - Transfer students can complete minors and sometimes even double majors
- High-Impact Learning
  - Pursue internships and study abroad
  - Conduct independent research through Departmental Honors
  - Enroll in the Accelerated Graduate Program to earn an MA in 1 extra year
  - Earn credit through Moot Court and Model Illinois Government
- Strong Outcomes
  - Over 40% of our graduates attend law school or graduate school



# DEPARTMENT OF PSYCHOLOGY

---

- Undergraduate Programs
  - Psychology (n = 251)
  - Psychology Online (n = 116)
  - Neuroscience (n = 17)
- Graduate Programs
  - School Psychology
  - Clinical Psychology





# DEPARTMENT OF PSYCHOLOGY

---

## High-Impact Undergraduate Opportunities



Research methods  
course



Internship



Undergraduate  
research

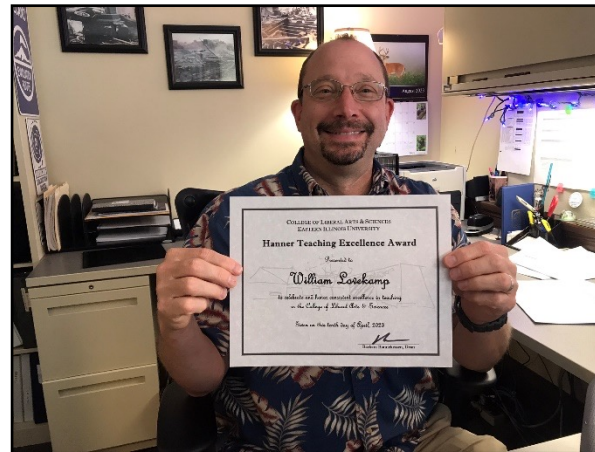
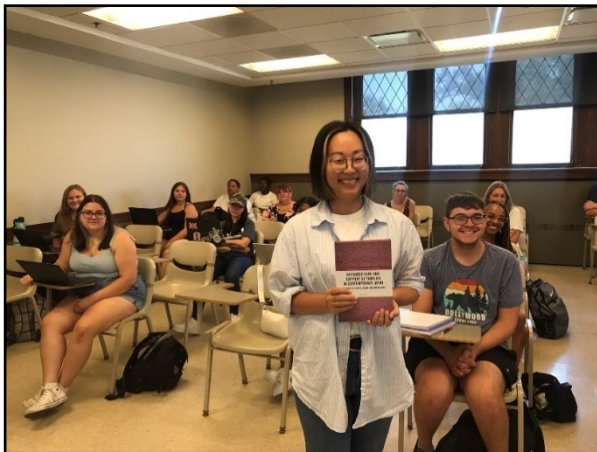


Study abroad to  
Vienna

# DEPARTMENT OF SOCIOLOGY, ANTHROPOLOGY, & CRIMINOLOGY

## What's New?

- New Department chair: Dr. Don Holly
- Dr. Mari Kita publishes book on the criminal justice system in Japan
- Dr. Bill Lovekamp is awarded prestigious Hanner Teaching Excellence Award
- Dr. Wade Smith serves as president of the Illinois Sociological Association
- Former EIU President Dr. Glassman returns to faculty and teaches Forensic Anthropology
- New student lounge/learning hub



# DEPARTMENT OF SOCIOLOGY, ANTHROPOLOGY, & CRIMINOLOGY

## Information for incoming transfers

- Curriculum updated, enhanced, and simplified
  - Criminology
    - Introduction to Criminal Justice is now required
    - Students select only *one* law elective (Philosophy of Law, Criminal Law, or Civil Liberties)
    - Capstone course (Contemporary Topics) now fulfills senior seminar requirement
    - Criminology minor streamlined (fewer required courses, criminal administration & justice tracks eliminated)
  - Sociology
    - Capstone course (Current Issues) now fulfills senior seminar requirement
    - New Introduction to Social Work course offered
  - Anthropology
    - Several 3000-level electives now have no prerequisites
- Student resources and opportunities
  - New student learning hub/lounge
  - Departmental honors and chapters in two national honor's societies
  - Two active student clubs
  - Host to Illinois Sociological Association meetings in 2022 and 2023
    - Opportunity for students to participate and present research

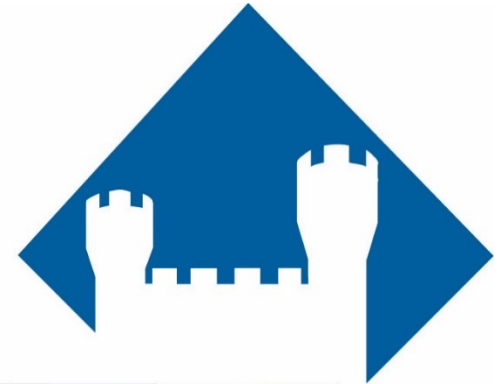




Eastern Illinois University

# LUMPKIN COLLEGE OF BUSINESS & TECHNOLOGY

---



EASTERN ILLINOIS UNIVERSITY™

---

AUSTIN CHENEY, PHD, MBA, P.E., DEAN  
AYSE COSTELLO, PHD, MBA, PROFESSOR OF MGT,  
LUMPKIN COLLEGE FACULTY FELLOW

# Welcome

---

Why is the Lumpkin College of Business & Technology (LCBT)  
the “right place” to be?

## Purpose

We engage and inspire leaders to improve the world around them.

## Vision

Lumpkin College – an inclusive environment, where students immediately begin their careers through an intensive educational experience that develops an extraordinary skill set and network, translating into a lifetime of professional success.



---

Dr. David Martin, Chair  
School of Business





Dr. Mahmoud  
Al-Odeh,  
Chair  
School of  
Technology

---



# Lumpkin College Student HELP Hub for Engagement, Leadership, and Professionalism

---

Located in Lumpkin Hall 2051

- Academic and Professional Advising

Located in Lumpkin Hall 2131

- Internships
- Study Abroad
- Registered Student Organizations (RSOs)
- Other Engagement Opportunities



# Engage Intentionally

---

The Lumpkin College of Business and Technology is a network of active stakeholders.

- Project-Based Learning
- Guest speakers/Company Visits
- Lumpkin College Student Hub
- Executives in residence
- Student Competitions
- Student Organizations
- Internship opportunities
- Dean's Student Advisory Board
- Study abroad
- Homecoming
- Faculty and staff are good agents of connection - undergraduate research, employers, alumni
- Graduates of the Last Decade (GOLD)



# School of Business Programs

## Bachelor's Programs

- Accounting (ACC)
- Business Analytics and Information Systems (BAIS/MIS)
- Finance (FIN)
- Hospitality and Tourism (HTM)
- Management (MGT)
- Marketing (MKT)
- Business Administration (BUS) - online only

## Master's Programs

- Business Administration (MBA) - online

## Minors

- Accountancy
- Business Administration
- Business Analytics
- Entrepreneurship
- Finance
- Human Resource Management
- Management
- Management Info Systems
- Marketing
- Operating & Supply Chain Mgmt



# NEW SCHOOL OF BUSINESS PROGRAM

---

## CYBERSECURITY AND RISK MANAGEMENT MINOR

- Provides a foundational understanding of principles, techniques, and tools needed to protect information systems and assets from unauthorized access, use, disclosure, disruption, modification, or destruction!
- Prepare students for careers in a variety of industries, including information technology, finance, healthcare, government, and law enforcement!
- Is a good preparation for graduate studies in cybersecurity, computer science, or related fields!
- Shares multiple courses with our BSB in Business Analytics and Information Systems and our BS in Computer and Information Technology and can easily be added for students pursuing one of these majors.

**LUMPKIN COLLEGE  
OF BUSINESS & TECHNOLOGY**



EASTERN ILLINOIS UNIVERSITY™

# SCHOOL OF TECHNOLOGY

## WHY EIU SCHOOL OF TECHNOLOGY?

**SMALL CLASS  
SIZES**

**DEDICATED  
FACULTY**

**ADVISING HUB**

**HIGH  
PLACEMENT  
RATE:  
95% AND  
ABOVE**

**AVAILABILITY  
OF  
SCHOLARSHIPS**

**TRANSFER-  
FRIENDLY  
PROGRAMS**

**ACCREDITATION  
(IN-PROGRESS)**

**INDUSTRY-  
DRIVEN  
CURRICULUM**

**HANDS-ON  
CLASSES**

**STUDENT  
ENGAGEMENT**

# SCHOOL OF TECHNOLOGY

## SCHOOL OF TECHNOLOGY PROGRAMS

### FIVE UNDERGRADUATE PROGRAMS

- **ENGINEERING TECHNOLOGY**  
Hands-on courses in automation, robotics, prototyping, quality, safety engineering, machining, and production management
- **COMPUTER & INFORMATION TECHNOLOGY**  
Programming, database, networking, cyber security
- **CONSTRUCTION MANAGEMENT**  
Commercial and residential
- **DIGITAL MEDIA TECHNOLOGY**  
Game development & digital media
- **ORGANIZATIONAL DEVELOPMENT**  
Most transfer-friendly in EIU to develop leaders and managers

### FOUR GRADUATE PROGRAMS

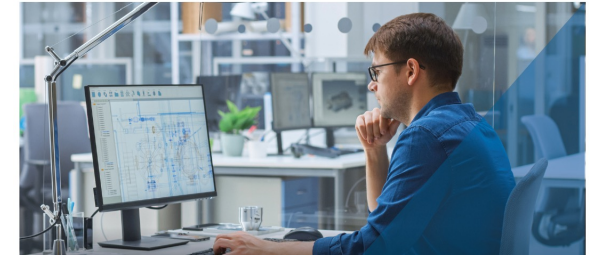
- **CYBERSECURITY**
- **SUSTAINABILITY**
- **TALENT DEVELOPMENT**
- **TECHNOLOGY**

# Changes to Engineering Technology

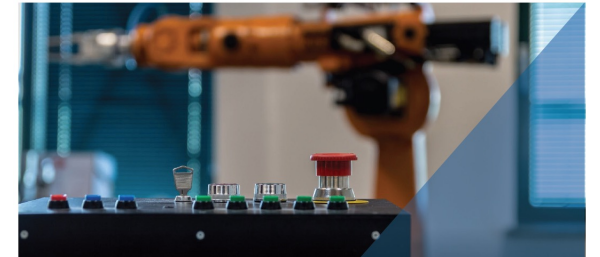
## BACHELOR OF SCIENCE IN ENGINEERING TECHNOLOGY SAFETY & RISK MANAGEMENT TRACK



## BACHELOR OF SCIENCE IN ENGINEERING TECHNOLOGY INDUSTRIAL DESIGN & PRODUCT DEVELOPMENT TRACK



## BACHELOR OF SCIENCE IN ENGINEERING TECHNOLOGY MANUFACTURING SYSTEMS & AUTOMATION TRACK



## BACHELOR OF SCIENCE IN ENGINEERING TECHNOLOGY INDUSTRIAL DISTRIBUTION & LOGISTICS TRACK



# Changes to Construction Management

---

Simplified the curriculum

Accept more transfer credits into the program



# School of Technology







# DIGITAL MEDIA LAB



CAUTION  
Look out  
for cords  
on the floor





CAUTION  
Look out  
for cords  
on the floor.















**CUT** 

*Program-control Cutting Machine*

1	2	3		M	RESET
4	5	6		MOD	
7	8	9	0	FUN	

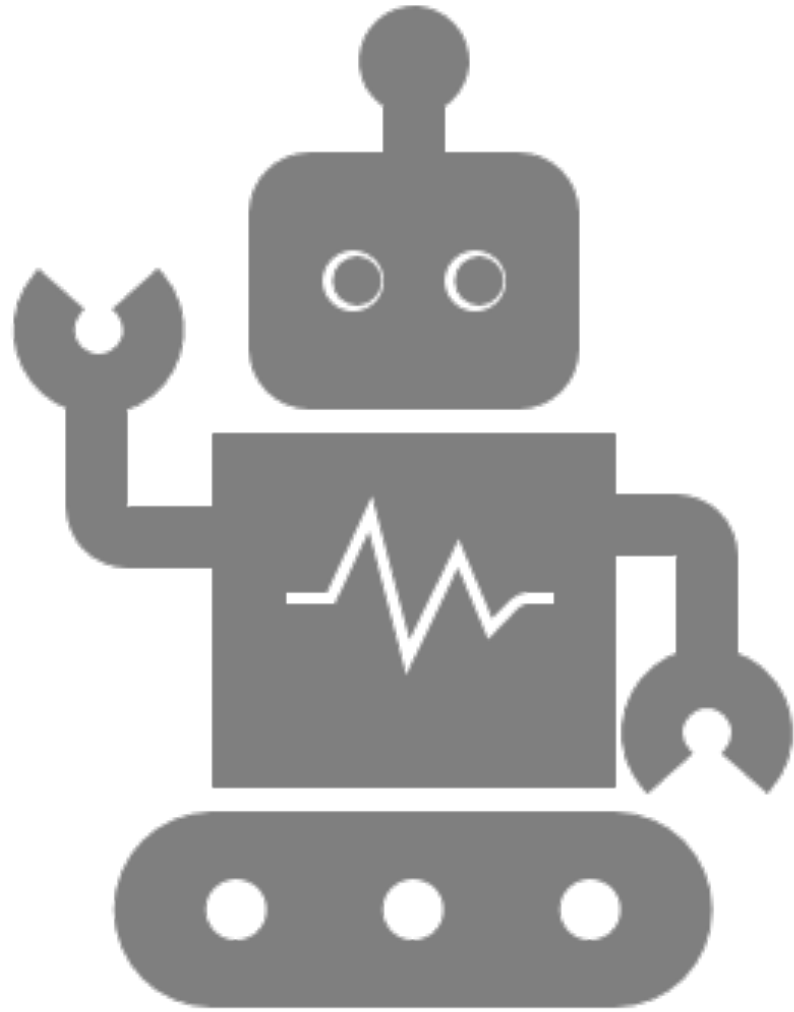
  **CUT**

# COMPUTER- AIDED DESIGN AND DRAFTING LAB

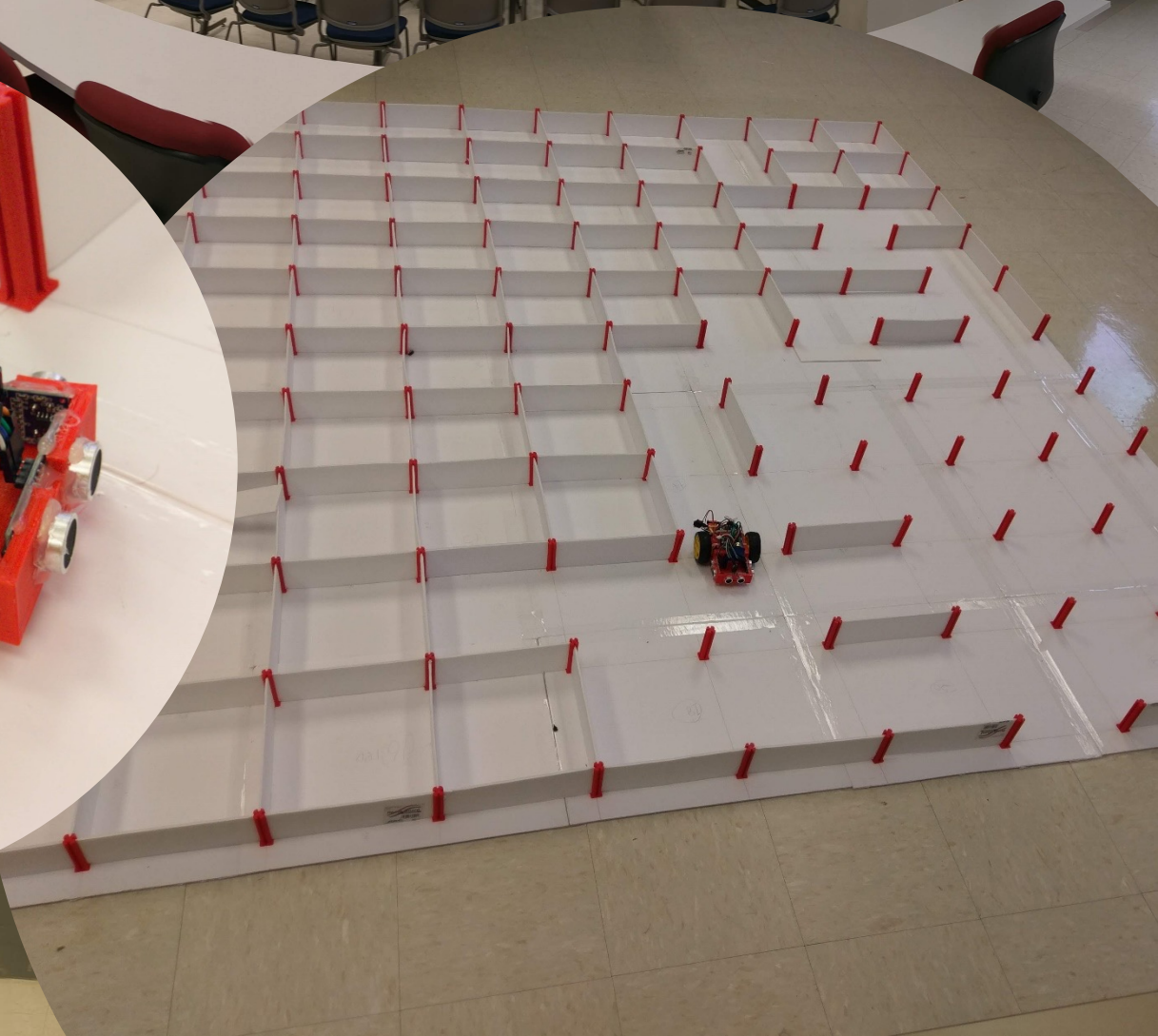
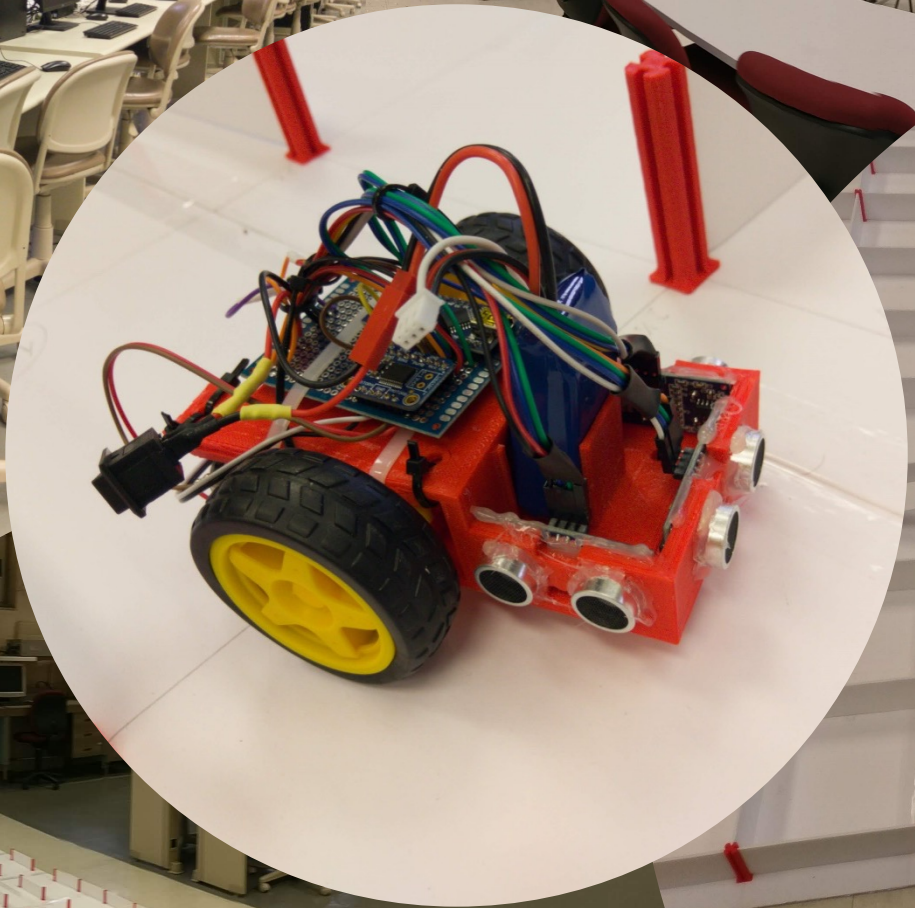
---

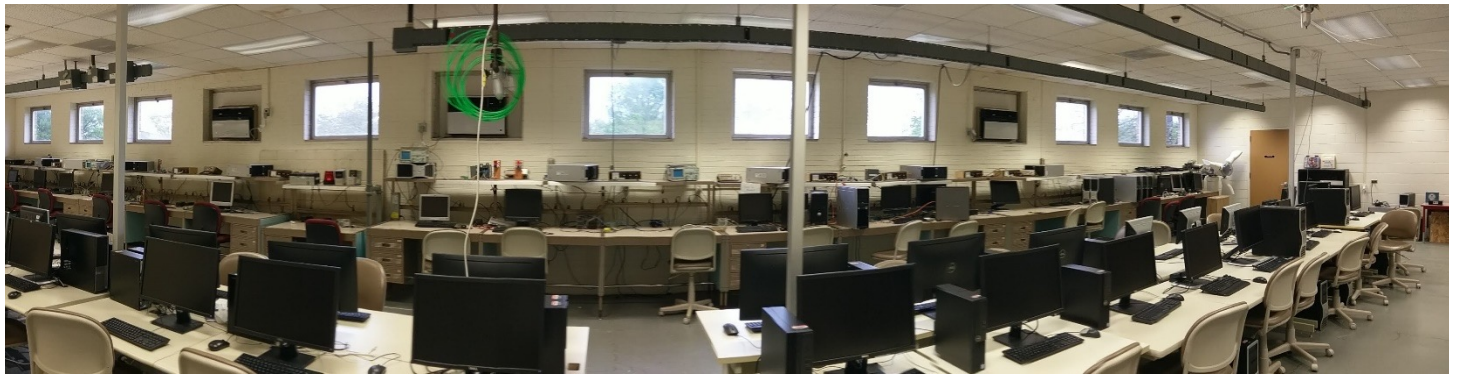
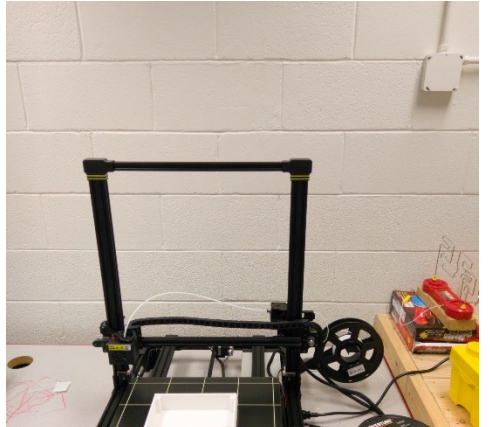
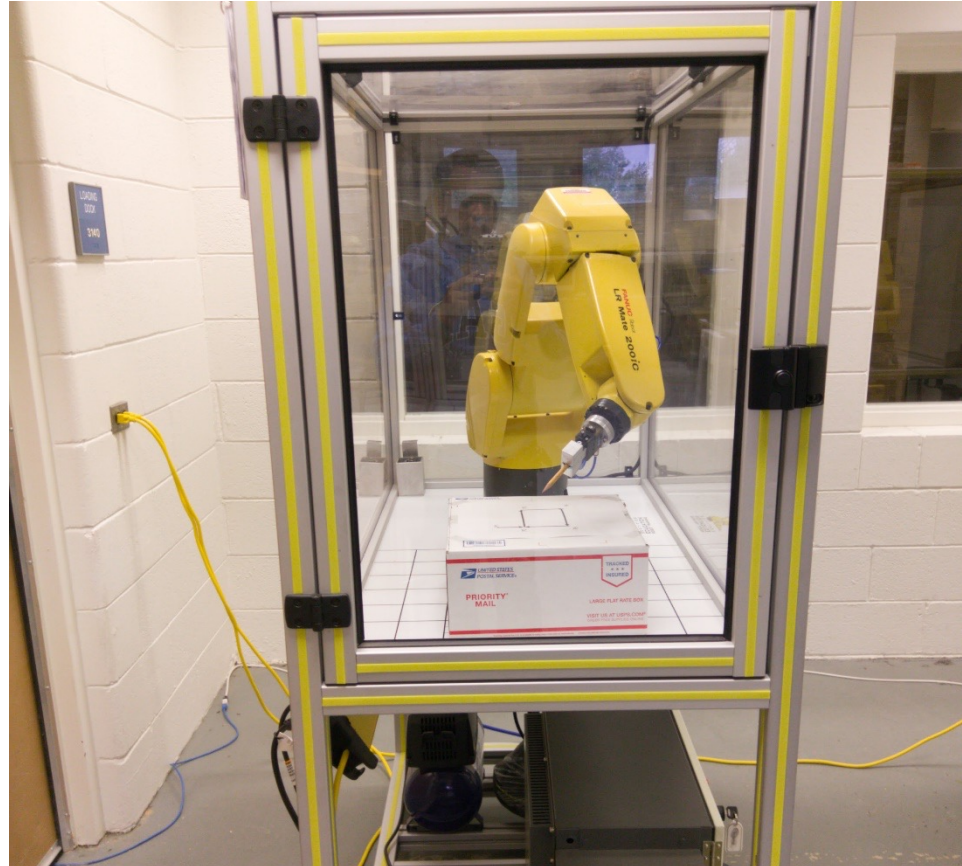
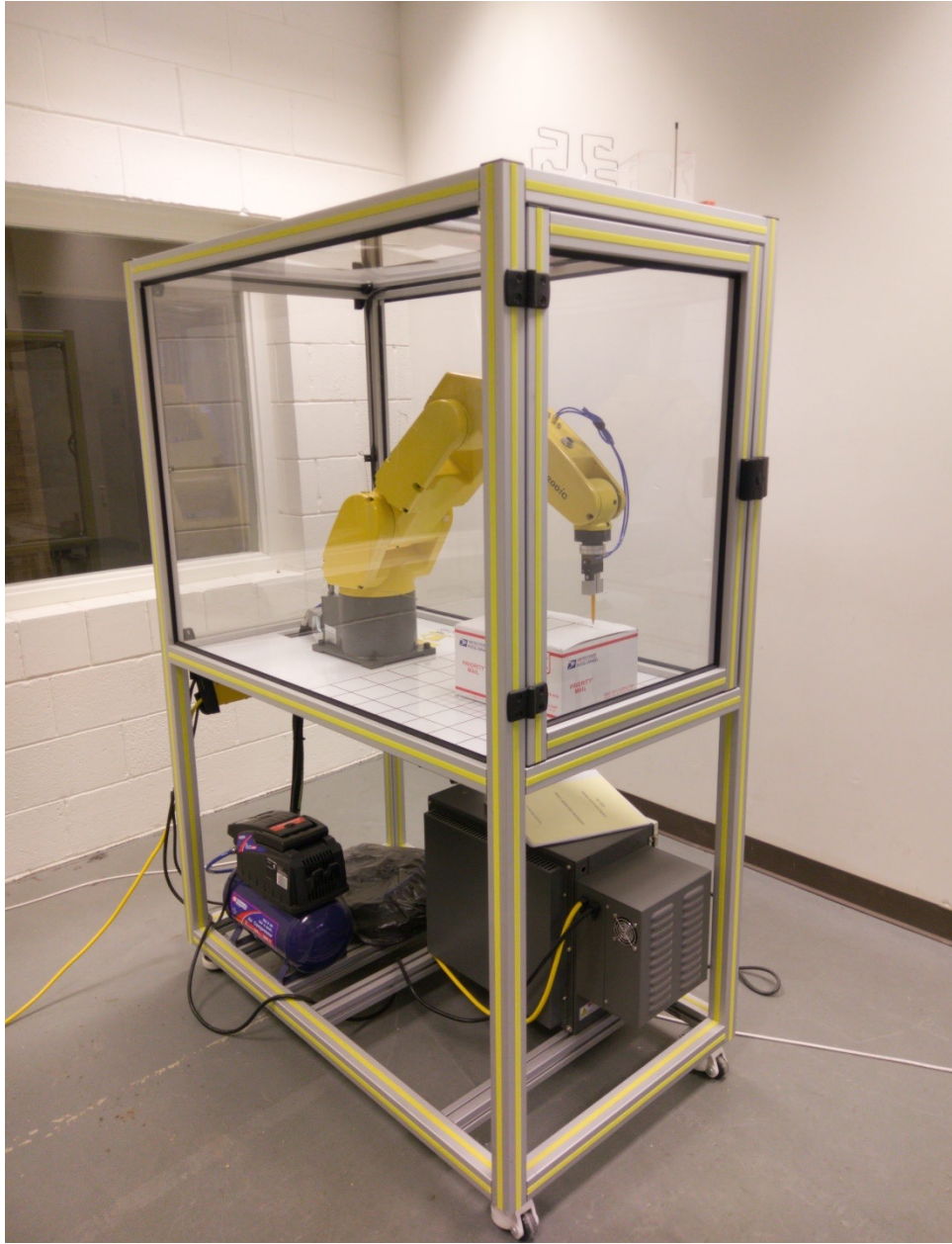






# **ROBOTICS & AUTOMATION LAB**



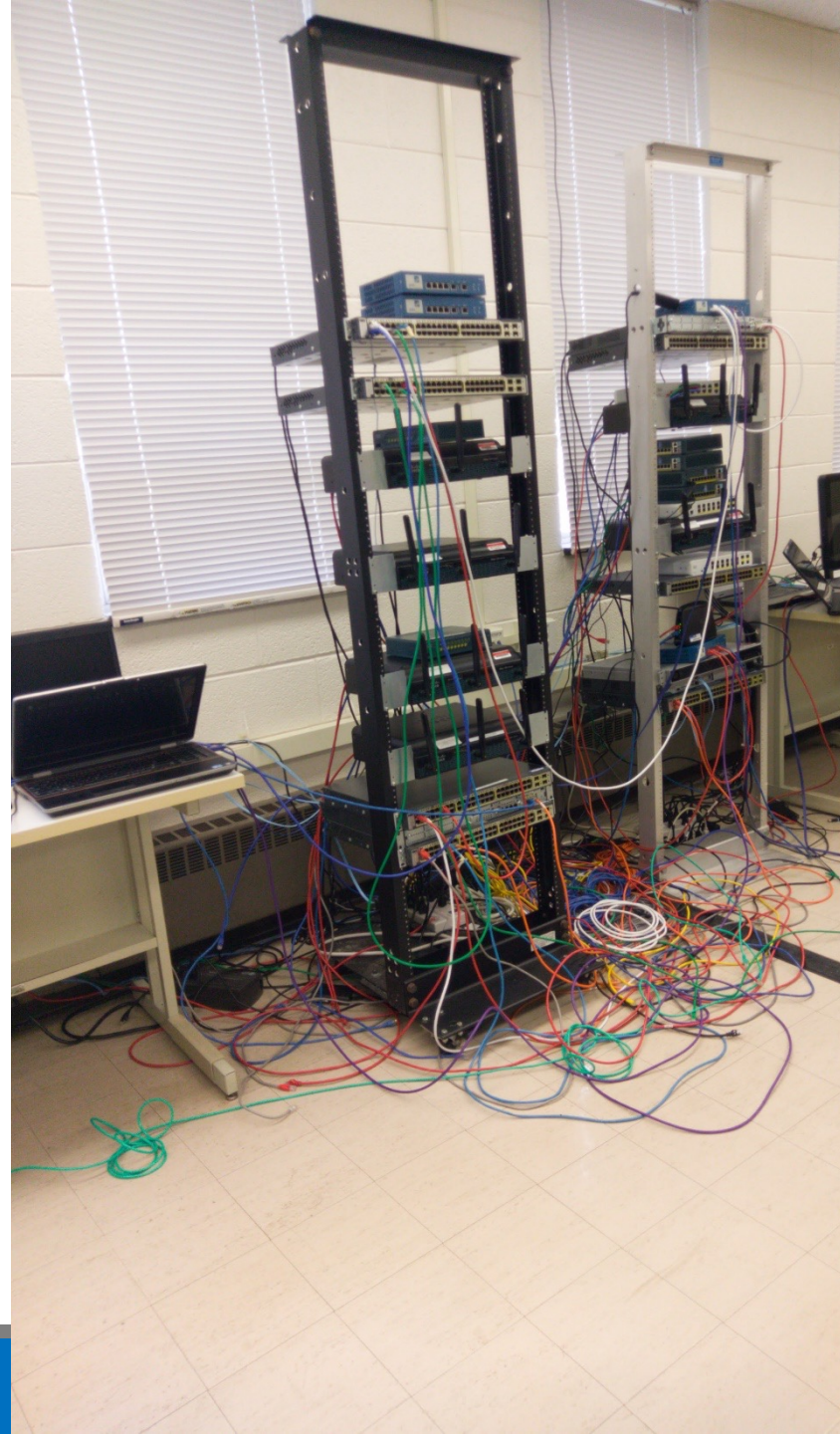




# **CYBERSECURITY LAB**

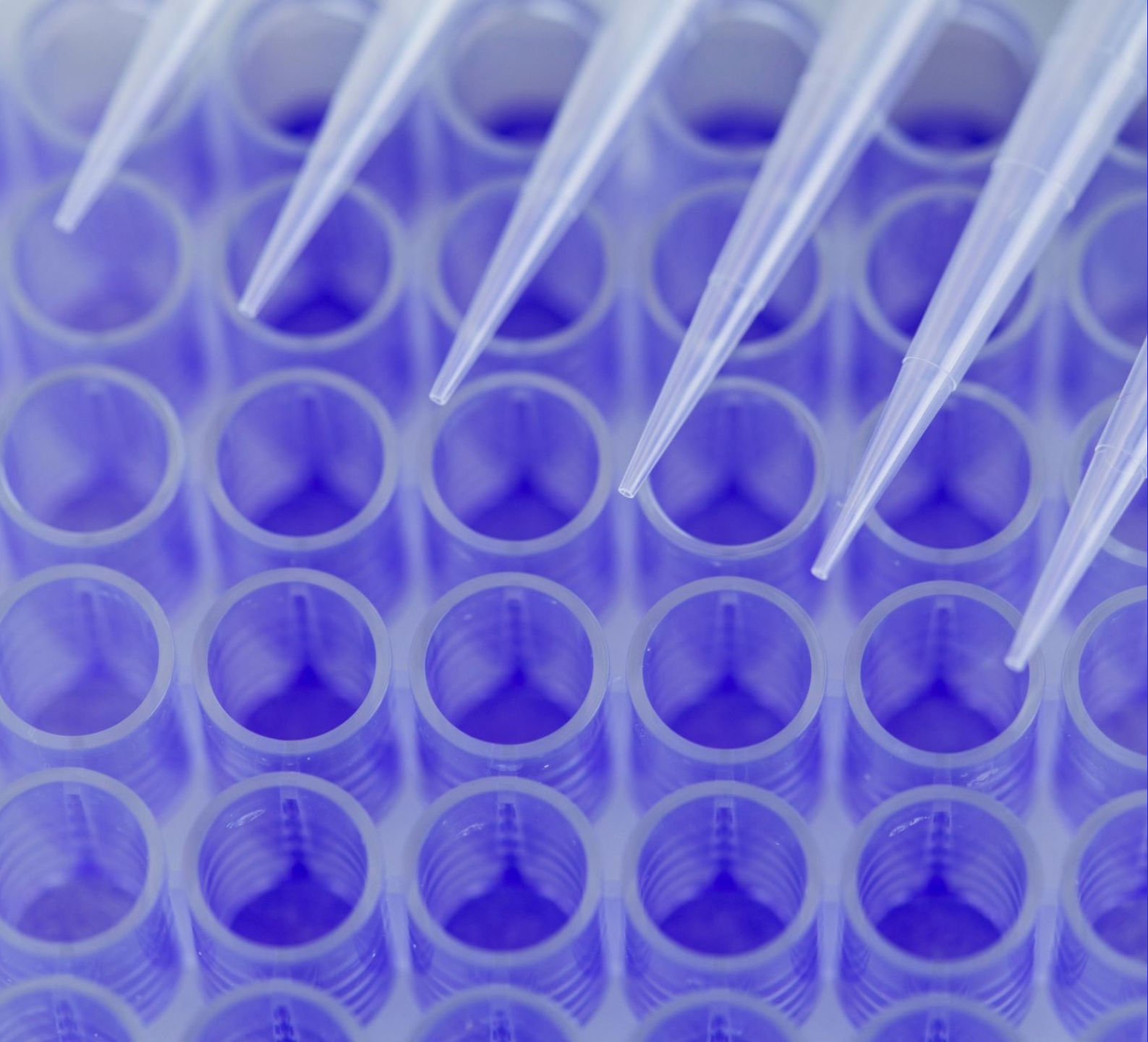
---





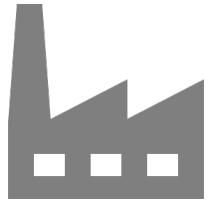






# **MATERIAL TESTING LAB**





# **PRODUCTION LAB**

---





# CONSTRUCTION LAB





# Outcomes

---

## Extremely High Placement Rates

- 95% or higher for each program in Lumpkin - placement in their field of study or going to graduate school
- Average salaries for graduates are above national averages

## Regular Career Growth

- Many graduates earn advancements frequently

## Alumni Get Involved

- Graduates of the Last Decade (GOLD)
- Business Advisory Board
- School of Technology Advisory Board
- Lumpkin Executive Advisers to the Dean (LEAD)



Eastern Illinois University

# COLLEGE OF EDUCATION

Community College Articulation Conference

Laretta Henderson, Dean

Christy Hooser, Associate Dean

September 20, 2023

Eastern Illinois University

# Commitments

- Quality undergraduate and graduate programs
- Student success academically, professionally, and personally in and out of the classroom
- Maintaining strong relationships with alumni and friends of the College
- Serving the professional and personal needs of our community

# College of Education Initiatives

- Early Childhood Access Consortium for Equity
- Community-based Cohorts for Paraprofessionals (Danville, Vermillion County, Champaign)
- Master's of Arts in Teaching
- ISBE: Culturally Responsive Teaching and Leading Standards
- ISBE: Diversifying the Pipeline
- GYO: Historically Disadvantaged Male Initiative

# Preparing Candidates for the Transition: Cooperative EIU and Community College Efforts

- Empower candidates to advocate for themselves
  - Major selection
  - Academic support needs
  - Wellness needs
  - Accommodation needs
- Support candidates in improving upon and demonstrating classroom survival behaviors
  - Time management and organization
  - Study skills (reading, writing, test-taking)
  - Seeking assistance
  - Decision and choice-making
- Prepare candidates for the cultural shift from attending a community college to attending a four-year college/university
  - Geographical shift (urban v. suburban v. rural)
  - Inclusiveness and FIT within their selected major
  - Program Requirements and Expectations

# Educator Licensure Programs

- Early Childhood (Birth-Grade 2)
- Elementary (Grades 1-6)
  - Middle Level (Grades 5-8)
- Language Arts, Mathematics, Science, Social Science
- Career & Technical Education (5-12)
  - Business, Family & Consumer Science, Technology
- World Languages (PK-12)
  - French, German, Spanish
- Physical Education (PK-12)
- Music (PK-12)
  - General, Instrumental, Vocal
- Visual Arts (PK-12)
- Secondary (9-12)
  - English Language Arts
  - Mathematics
  - Science
    - Biology, Chemistry, Earth Science, Physics
- Social Science-History
- Administrative
  - Teacher Leader, Principal, Superintendent, Director of Special Education
- School Service Personnel
  - School Counselor, School Psychologist, Speech Language Pathologist



# Supporting Candidates with a Positive Curricular Transition

- Candidates who tend to have no delays to graduation
  - Know the teacher licensure area they are pursuing
  - Enter the university with an AA or AS degree
  - Have been academically successful at the community college
  - Have experiences with the student population they desire to teach.
- If asked, please be hesitant in telling candidates an anticipated graduation date. How a candidate progresses through the respective program will be based on their meeting of teacher education requirements at the respective institution.

# Supporting Candidates in a Seamless Curricular Transition: Resources

- [www.eiu.edu/edprep/index.php](http://www.eiu.edu/edprep/index.php) - Educator Preparation
- [www.eiu.edu/transfer/coop\\_coursesub.php](http://www.eiu.edu/transfer/coop_coursesub.php) - Transfer Articulation Guide
- Department websites
  - Teaching, Learning, and Foundations - [www.eiu.edu/eemedu](http://www.eiu.edu/eemedu)
- K-12 Programs
  - Art Department- [Art | Eastern Illinois University \(eiu.edu\)](http://Art|EasternIllinoisUniversity(eiu.edu))
  - Music - [Music | Eastern Illinois University \(eiu.edu\)](http://Music|EasternIllinoisUniversity(eiu.edu))
  - Physical Education - [Kinesiology, Sport, and Recreation | Eastern Illinois University \(eiu.edu\)](http://Kinesiology,Sport,andRecreation|EasternIllinoisUniversity(eiu.edu))
  - Special Education - [www.eiu.edu/speced](http://www.eiu.edu/speced)

# Supporting Candidates in a Seamless Curricular Transition: Resources

- Secondary Education
  - Career and Technical Education - [Career and Technical Education | Eastern Illinois University \(eiu.edu\)](https://www.eiu.edu/cte)
  - English Department - [eiu.edu/english](https://www.eiu.edu/english)
  - History - [History | Eastern Illinois University \(eiu.edu\)](https://www.eiu.edu/history)
  - Math - [Mathematics and Computer Science | Eastern Illinois University \(eiu.edu\)](https://www.eiu.edu/math)
  - Science
    - Biology - [Department of Biological Sciences | Eastern Illinois University \(eiu.edu\)](https://www.eiu.edu/biology)
    - Earth Science - [Geology/Geography | Eastern Illinois University \(eiu.edu\)](https://www.eiu.edu/geology)
    - Chemistry - [Chemistry and Biochemistry | Eastern Illinois University \(eiu.edu\)](https://www.eiu.edu/chemistry)
    - Physics - [Physics | Eastern Illinois University \(eiu.edu\)](https://www.eiu.edu/physics)
  - World Language - [World Languages and Cultures | Eastern Illinois University \(eiu.edu\)](https://www.eiu.edu/worldlanguages)

# Supporting Candidates with a Positive Curricular Transition: General Education Advisement Recommendations

- All teacher education candidates are encouraged to come in with equivalents to
  - ENG 1001G, ENG 1002G, and CMN 1310G
  - College Level Math course (Candidates seeking ELE or SPE licensure are encouraged to take MATH 1420 at minimum. If offered, candidates should also take MATH 2420)
  - If the candidate did not have two years of foreign language with a "C" or better, the candidates are encouraged to take two semesters of foreign language at the community college.

# Supporting Candidates with a Positive Curricular Transition: General Education Advisement Recommendations

- Additional General Education Recommendations
  - Social Science
    - Two different social science areas must be reflected (EDF 2555G is encouraged as it will double count as a general education and professional education course)
    - Equivalent to PLS 1153G is recommended
  - Science
    - Biological Science and Physical Science must be represented
    - One course must have a lab
  - Arts and Humanities
    - Fine Arts and Humanities must be represented
    - Third World course for SPE majors

# Supporting Candidates with a Positive Curricular Transition: Professional Education Advisement Recommendations

- When considering having candidates take professional education courses, consider the candidates' academic performance.
- Candidates who struggle with general education coursework or a certain general education subject should be advised to take the courses at the community college.
- Candidates who are successful in general education should be higher priority for being advised to take professional education courses.

**Supporting  
Candidates with a  
Positive Curricular  
Transition:  
Professional  
Education  
Advisement  
Recommendations**

- Recommendations for equivalents
  - Elementary Education and Special Education
    - EDF 2555G
    - ELE 2050 (if 2 courses are required make sure the candidate has taken both prior to entering EIU)
    - EDU 2022
    - SPE 2000
  - Secondary Education
    - SED 2000
    - EDF 2555G

# Contact Information

- **College of Education:** [coe@eiu.edu](mailto:coe@eiu.edu) / (217) 581-2524
- **Dean Laretta Henderson:** [lhenderson2@eiu.edu](mailto:lhenderson2@eiu.edu)
- **Associate Dean Christy Hooser:** [cmhooser@eiu.edu](mailto:cmhooser@eiu.edu)
- **GYO Grant Director Brian Reid:** [bdreid2@eiu.edu](mailto:bdreid2@eiu.edu)



# SCHOOL OF EXTENDED LEARNING

---

**BA IN INTERDISCIPLINARY STUDIES**

# PROGRAM REQUIREMENTS

- **120 MINIMUM SEMESTER HOURS THAT MUST INCLUDE THE FOLLOWING:**
  - **40 HOURS UPPER DIVISION**
  - **12 HOURS MATH/SCIENCE**
  - **12 HOURS SOCIAL SCIENCES**
  - **12 HOURS HUMANITIES**
  - **6 HOURS ENGLISH/COMMUNICATION**
  - **SENIOR SEMINAR**
  - **TWO IDS COURSES**
  - **EWP WRITING REQUIREMENT**

**\*\*TRANSFERABLE ASSOCIATES DEGREES WILL MEET ALL LOWER-LEVEL GENERAL EDUCATION REQUIREMENTS\*\***

# WHY IDS IS THE BEST FIT

- **FLEXIBILITY**
- **AFFORDABLE**
- **CHART YOUR OWN DEGREE PATH**
- **EASE IN TRANSFERRING CREDITS**
- **MILITARY FRIENDLY**
- **WELCOME PARTNERSHIPS**
- **PRIOR LEARNING OPPORTUNITIES**
- **ACCESS TO EXCEPTIONAL ADVISING**
- **ROLLING OUT NEW CURRICULUM  
EFFECTIVE FALL 2024**

# CONTACT INFORMATION

**Kim Redfern, Director**

karedfern2@eiu.edu

217-581-5618

[EIU.EDU/IDS/](https://www.eiu.edu/ids/)



Eastern Illinois University

# COLLEGE OF HEALTH & HUMAN SERVICES

# WELCOME FROM THE CHHS DEAN'S OFFICE

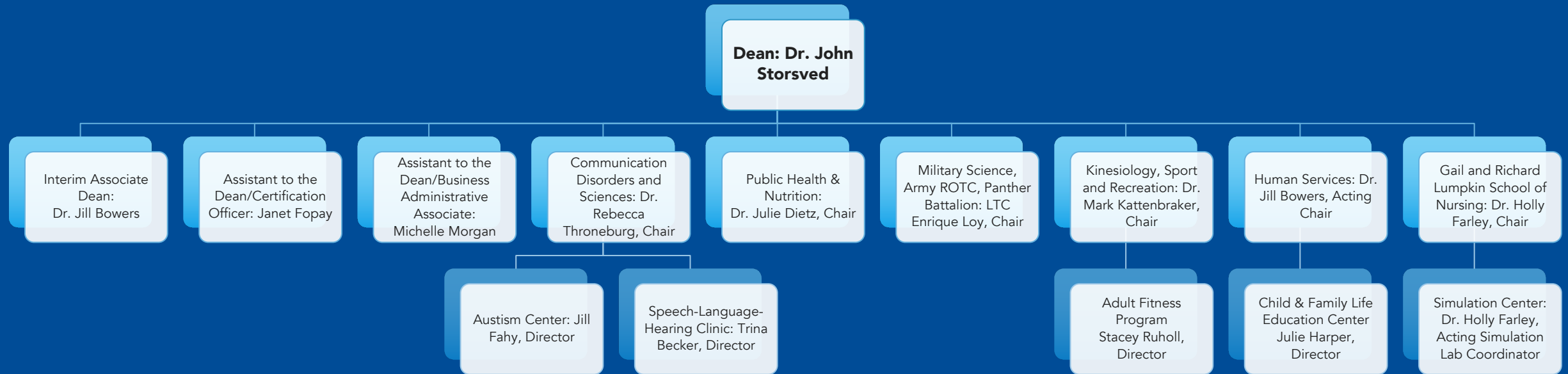


DR. JOHN  
STORSVED,  
DEAN



DR. JILL BOWERS,  
INTERIM  
ASSOCIATE DEAN

# COLLEGE OF HEALTH & HUMAN SERVICES





# ACADEMIC PROGRAMS

- Communication Disorders and Sciences  
*Dr. Rebecca Throneburg, Chair*
- Public Health and Nutrition  
*Dr. Julie Dietz, Chair*
  - Nutrition and Dietetics
  - Public Health (Options: Community Health or Emergency Management Disaster Preparedness – online and f2f)
  - Health Administration
  - Health Sciences (Options: Generalist and Diversity & Equity)
- Human Services  
*Dr. Jill Bowers, Acting Chair*
  - Human Services (F2F and Online)
  - ECACE-Online Degree Program in Early Childhood
- Kinesiology, Sport, and Recreation  
*Dr. Mark Kattenbraker, Chair*
  - Exercise Science (Options: Pre-Athletic Training, Pre-Physical Therapy, Pre-Occupational Therapy)
  - K-12 Physical Education
  - Sport and Recreation Management
- Military Science (minor)  
*LTC Enrique Loy, Chair*
- Nursing  
*Dr. Holly Farley, Chair*
  - RN-BSN (Online)
  - B.S. in Nursing

# COMMUNICATION DISORDERS AND SCIENCES

## Careers

- Speech-language pathology
- Audiology
- Alternatives – flexible options for expertise, grad school and “back up” plans = “pre-therapy” or OT/ST, pre-med or pre-dental, bilingual/ESL, family services, psychology/counseling electives

- 85% plus accepted into grad school
- 95% plus first time pass rate on national SLP Praxis Certification & Licensure Test
- 100% employment

## Experiential learning opportunities

- Study Abroad/Therapy Abroad
- The Autism Program
- Undergraduate Clinic
- Student groups- NSSHLA, ASL, Bilingual
- Independent Studies



# PUBLIC HEALTH & NUTRITION

## Majors

- Nutrition and Dietetics
- Public Health (Options: Community Health or Emergency Management Disaster Preparedness; both options are available online and face to face)
- Health Administration
- Health Sciences (Options: Generalist and Diversity & Equity)

*Undergraduate Didactic Program in Dietetics is accredited by the Accreditation Council for Education in Nutrition and Dietetics of the Academic through Nutrition and Dietetics*

# PUBLIC HEALTH & NUTRITION

## Minors in Public Health

- Public Health, Public Health for Teacher Licensure, Workplace Wellness, Nutrition

## Careers in Public Health

- Emergency management specialist, nursing home administrator, patient advocate, health care program coordinator, rural health coordinator, substance abuse prevention specialist, community educator (e.g., WIC)

## Careers in Nutrition and Dietetics

- Clinical dietitian, clinical nutrition manager, WIC nutritionist, SNAP-Ed Coordinator, corporate wellness , food service director

## Experiential learning opportunities

- Internships required

# HUMAN SERVICES

## Minors

- Aging Studies
- Financial Literacy
- Human Services
- Early Childhood Program Administration

## Careers

- DHHS specialist
- family financial counselor
- youth-family advocate
- child care provider
- child welfare
- addictions, violence, or substance abuse prevention and intervention

## Major

- Human Services
- ECACE-Online Degree Path in Early Childhood

## Experiential learning opportunities

- The Child and Family Life Education Center
- Child Development Practicum
- Required Internships



*\*Ask about our accelerated graduate program*

# KINESIOLOGY, SPORT & RECREATION

## Majors

- Exercise Science (Options: Pre-Athletic Training, Pre-physical therapy, or Pre-occupational therapy)
- K-12 Physical Education Certification
- Sport and Recreation Management

Minor: Workplace wellness

## Careers

- Cardiac rehabilitation specialist, physical and occupational therapy, physical education teacher, parks and recreation administrator, professional sport administration, college athletics administration, YMCA sports-fitness coordinator, community sport-recreation director

## Experiential learning opportunities

- Adult fitness program
- Internships

# LUMPKIN SCHOOL OF NURSING

## Majors

- Bachelor of Science (BSN)
- RN-BS in Nursing (online)

*Programs accredited by the Commission on Collegiate Nursing Education*



## Experiential learning opportunities

- Simulation Center
- Clinical Experiences

## Careers

- BSN prepared registered nurses can work in any area of nursing and management, as well as advance their career through specializations.

# MILITARY SCIENCE (MSC)

## Mission

- Train and commission officers in the United States Army, Army National Guard, and Army Reserves

## Course highlights

- Military Science courses are open to any student enrolled at EIU
- 4 year program (1 class/semester)
- Students enrolled in classes incur no military obligation for 2 years

## Careers

- Graduates guaranteed part-time or full-time job upon completion
- Graduates may choose from over 24+ career specialties
- **Transfer Waivers:** Illinois residents may be eligible for transfer waivers which cover cost of tuition and come with no military obligation (105 ILCS 5/30-16.3).
- **Full tuition scholarships are also available to committed students**



**THANK YOU FOR  
SPREADING THE  
WORD ABOUT THE  
COLLEGE OF  
HEALTH & HUMAN  
SERVICES!**

1032 Klehm Hall  
[eiu.edu/chhs](http://eiu.edu/chhs)  
217-581-6026



Eastern Illinois University

# GRADUATE SCHOOL AND INTERNATIONAL STUDENTS & SCHOLARS

Dr. Robert Chesnut,  
Interim Dean



# ADVANTAGE 1: ACCELERATED PROGRAMS

---

## Credits toward both a bachelor's and a master's degree

Master of Arts in Aging Studies

Master of Science in Chemistry

Master of Arts in Communication Studies

Master of Science in Cybersecurity

Master of Arts in English

Master of Science in Exercise Physiology

Master of Science in Human Services

Professional Science Master's in Geographic Information Sciences

Master of Science in Health Promotion

Master of Arts in History

Master of Science in Nutrition and Dietetics

Master of Arts in Political Science

Master of Science in Sustainability

Master of Science in Technology

Master of Science in Talent Development

# ADVANTAGE 2: INTERNATIONAL TRANSFERS

---

- We are experienced with transfers of international students.
- We know how to support international students.





Eastern Illinois University