

Kira, Melpomene, Calliope,
4 Muses - Euterpe
off stage - Pit Singers

Magic

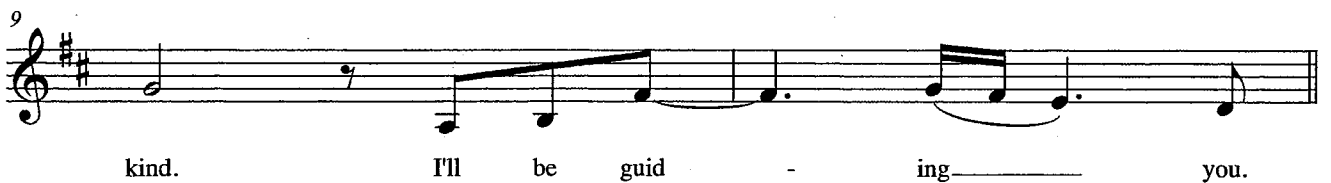
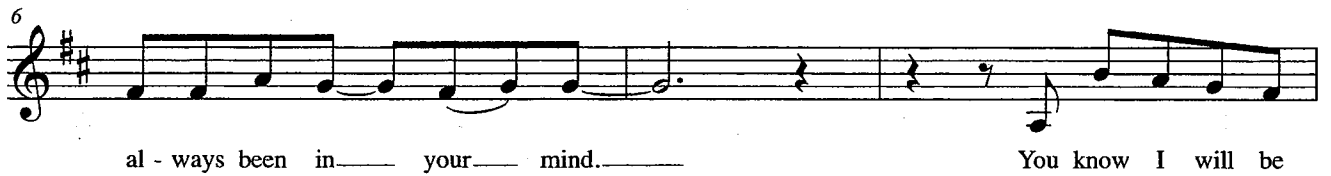
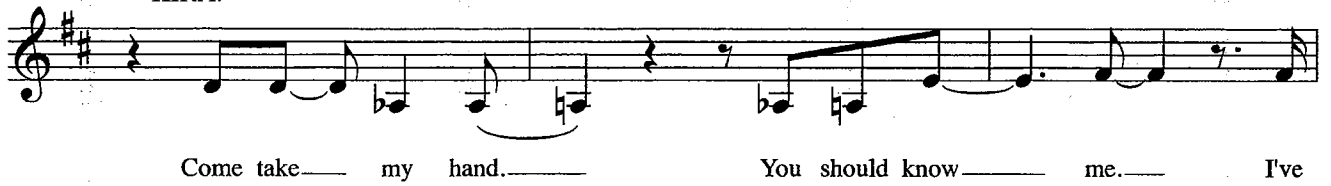
2

$\text{♩} = 108$

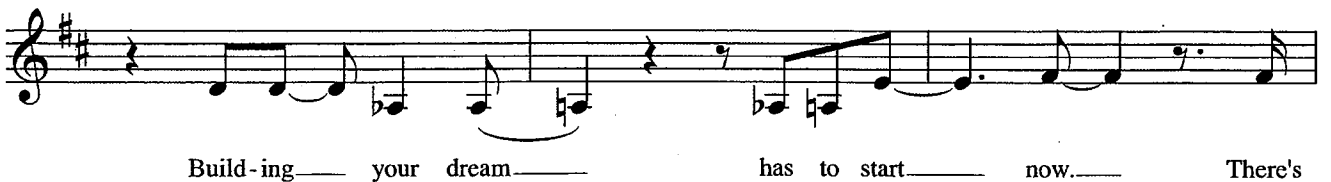


3

KIRA:



11



17

take. I'll be guid - ing you. You

p

Cur, *Mari*
And
Anik, Ken, *Annie*
Mary
Jackie

21

have to be - lieve we are ma - gic.

23

No - thing can stand in our way. You

25

have to be - lieve we are ma - gic.

27

Don't let your aim e - ver stray. And

And

#2 - Magic

SONNY: "You look just like the girl in the mirror."

29

if all your hopes sur - vive,

if all your hopes sur - vive

KIRA: "Only prettier and thinner."

31

de - st - iny will ar - rive.

Des - ti - ny will ar - rive.

33

I'll bring all your dreams a - live for you.

I'll bring all your dreams a - live.

(Marty on D)

37

I'll bring all your dreams a - live for you.

I'll bring all your dreams a - live.

FULL COMPANY

Fool

10

♩ = 164

5

KIRA:

Fool, — what — e — ver you do, — you re — mind — me.

CAL:
MEL: Fool Fool

Fool.

8

SONNY:

KIRA:

Fool?

wher —

Fool.

Fool Fool

10

e — ver you go, — you won't find — me.

I'm real — ly

Fool. — Fool.

13

down on— love So save on your smile.— Fool, I won't be need-ing a - ny,

Down on love.— Save on your smile.— I won't be need-ing a - ny,

16

not for a - while. I'm real - ly down on— love So

not for a - while.— Down on love.—

18

save on your smile.— Fool, I won't be need - ing a - ny,

Save on your smile.— I won't be need - ing a - ny,

20

not for a - while. Foo - fool.

not for a - while.— Fool.

22

Foo - fool.

Fool. Fool.

24

Fool fool.

Fool fool.

6

25-30

6

31 KIRA:

Fool. Cur CAL, And Ani, Ken, MEL

Wher - e - ver you go, — you're a lo - ser.

Fool fool

Fool.

Cur MEL

34

Such a fool.

Cur CAL, And Ani, Ken, MEL

Fool.

Fool fool

I

Sonny, Melpomene,
Calliope, 4 Muses

The Fall

11

$\text{♩} = 120$

3

1-3

SONNY:

5

I see the ear - ly glow. I hear you say hel-lo.

9

I watch the sha - dows fall. I don't see

12

you at all. I don't be-lieve it's so.

Cur
Jac, Anik, Annie

MUSES: *f* It's a lie. *p* *f* It's a lie.

Andre, Marty
Mary, Ken

It's a lie. It's a lie.

15

I see the au - tumn rain

p

18

fal - ling on my win - dow pane. I hear you say good - bye.

22

I see a tear in your eye. I

f It's a lie.

It's a lie.

25

don't be-lieve it's so. I see you

p *f* It's a lie. *p*

It's a lie.

28

in adream. You turn and start to go.

31

I call to you once more. Guess that I'm

(ore, ore, ore...)

(ore, ore, ore...)

34

ta - kin' the fall. I don't be-lieve it's so.—

MUSES: It's a lie. *p* *f* It's a lie.—

It's a lie.— It's a lie.—

37

ALL: >
Our *f*

39

SONNY:
love could-n't gowrong.— How could I know.— I— was on-ly