

Jan. 22, 2026

Using Digital Maps in the Classroom

Interactive Maps

Join Zoom Meeting



PD Option: The Power of Digital Maps in Your Classroom!



Learn simple, free, and classroom-ready ways to use digital maps to boost student engagement, build connections, visual thinking, and support standards — from K to 12.

- **Date:** January 22, 2026
- **Time:** 4:30 PM – 5:30 PM
- **Location:** 2445 Buzzard Hall

Session Qualifies for Student PD
Attendees receive a Certificate as Proof



Engage students in
Math & Science



Literature & History



Careers & Art

In Person or by Zoom



Recommend bringing a laptop or tablet

For Questions or Information

tsullivan@eiu.edu

www.eiu.edu/rsi/prof_development.php



Using Online Digital Maps in Teaching and Collaboration



**GROW YOUR
OWN TEACHERS**

ILLINOIS

EIU - Rural Schools Initiative
G.Y.O - Grow Your Own Cohorts
Director Dr. Cecil Smith

Monthly Tech PD Sessions

EIU RURAL SCHOOL INITIATIVE

Terence Sullivan

tjsullivan2@eiu.edu

Buzzard 2137



Sign-in - needed to get credit

Sign-In Form

<https://docs.google.com/forms/d/e/1FAIpQLSexubBibBGoSmcgjwyJ0B8OeqSCc7F9yhPiOHXUfMIBn-sqCg/viewform?usp=publish-editor>



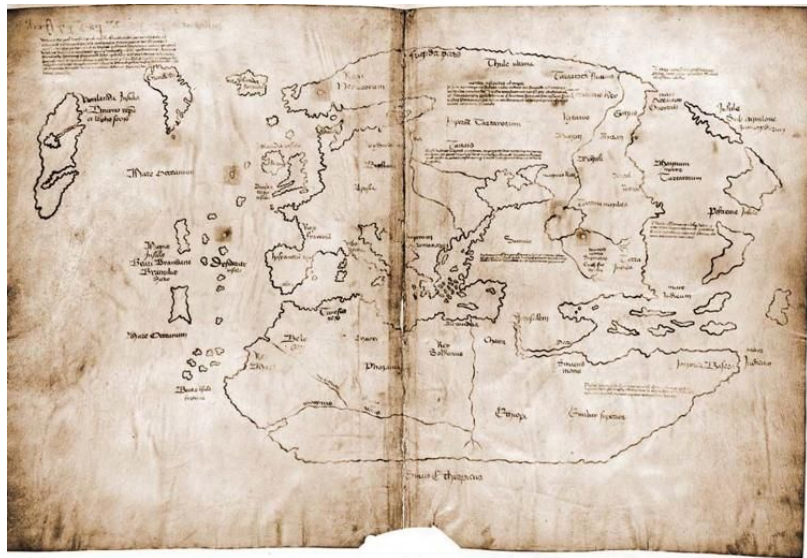


Slides

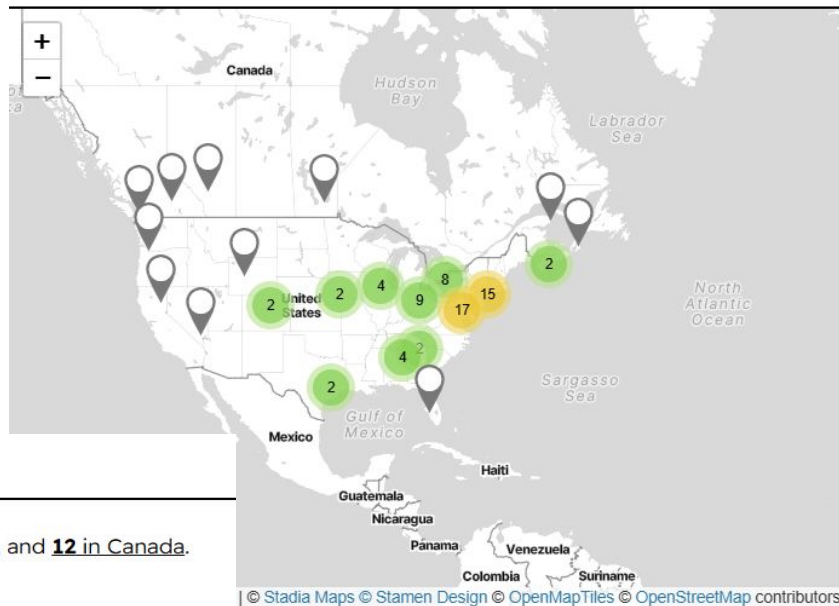
tsullivan@eiu.edu

Teaching with maps means using maps to help students learn key concepts & relationships. Teaching with maps enables students to think spatially in various contexts. Activities can be integrated into any content area because maps present information about the world in a simple, visual way. They can teach by showing sizes, shapes and relationships. Adding GIS layers allows maps to become interactive, allowing free exploration of geographic space or guiding students through a temporal sequence of events to organize and visualize information for understanding.





Vikings - 1021
Columbus - 1492

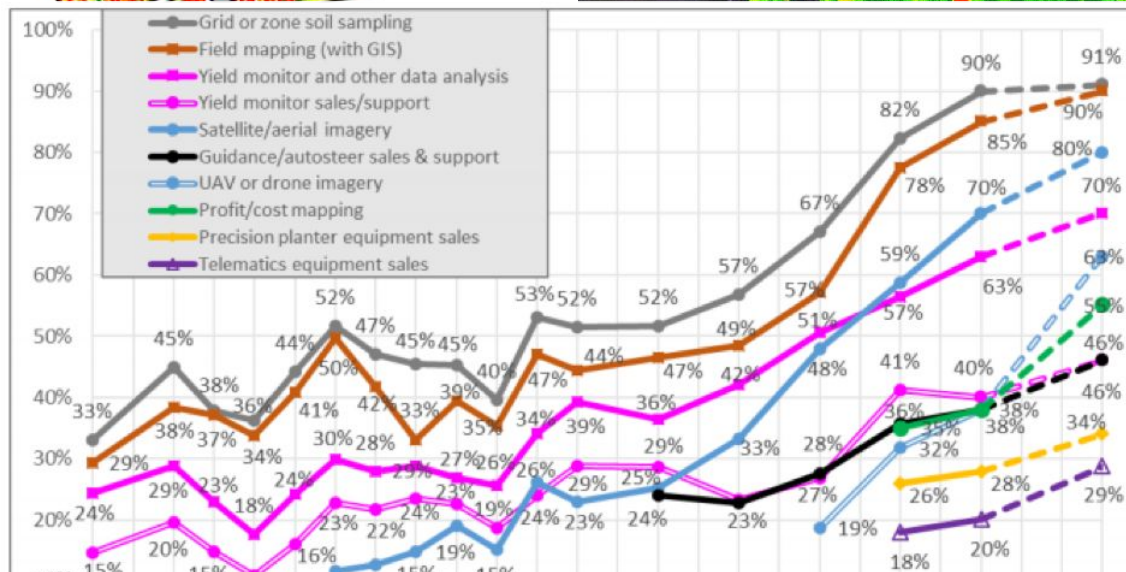
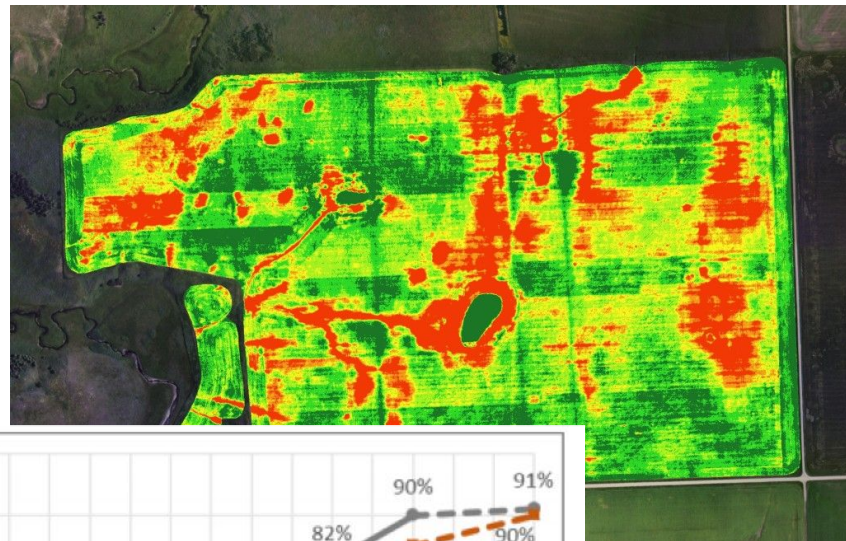
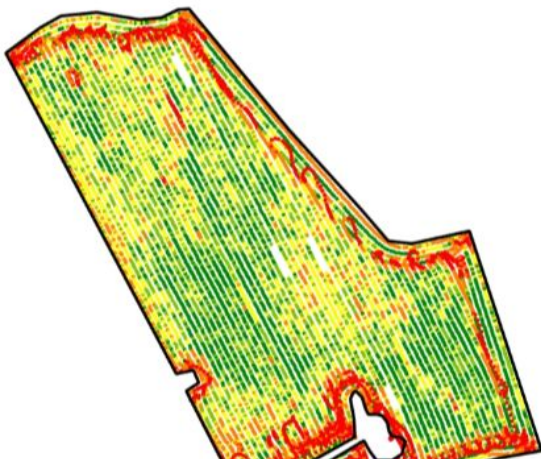


GROUNDHOG MAP

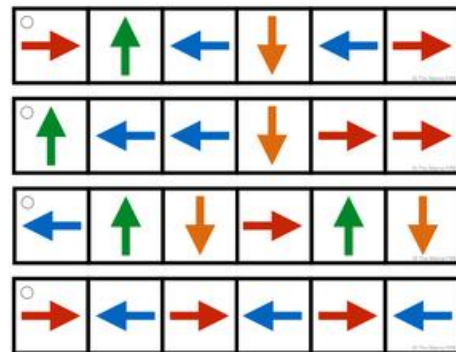
There are **78** active prognosticators who made a prediction in 2025: **66** in the USA, and **12** in Canada.

Find your nearest Groundhog Day prognosticator on the Groundhog Day Map.

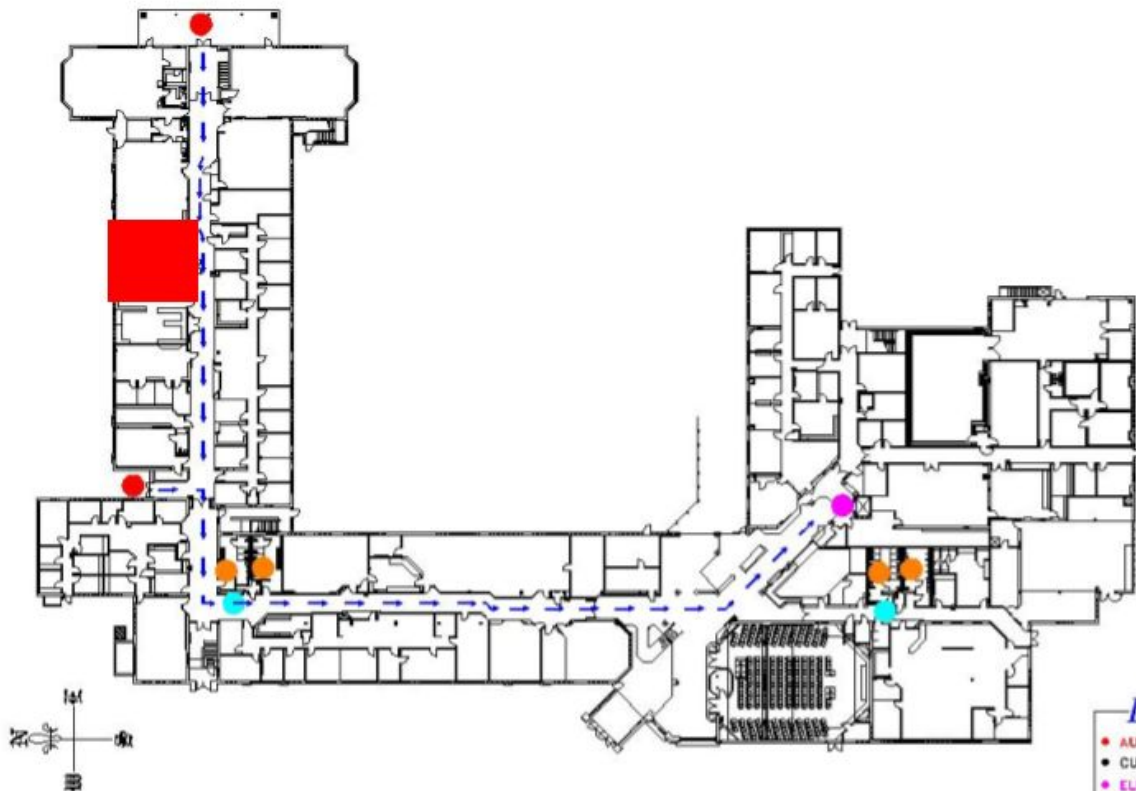
Yield (t/ha)



Cut out the strips. Then laminate, hole punch, and then add onto a binder ring.



© The McGraw-Hill Companies



Legend

- AUTOMATIC DOOR OPENERS
- CURB CUT
- ELEVATOR
- DRINKING FOUNTAIN
- LAUNDRY
- RAMP
- REST ROOMS
- PARKING & QUANTITY



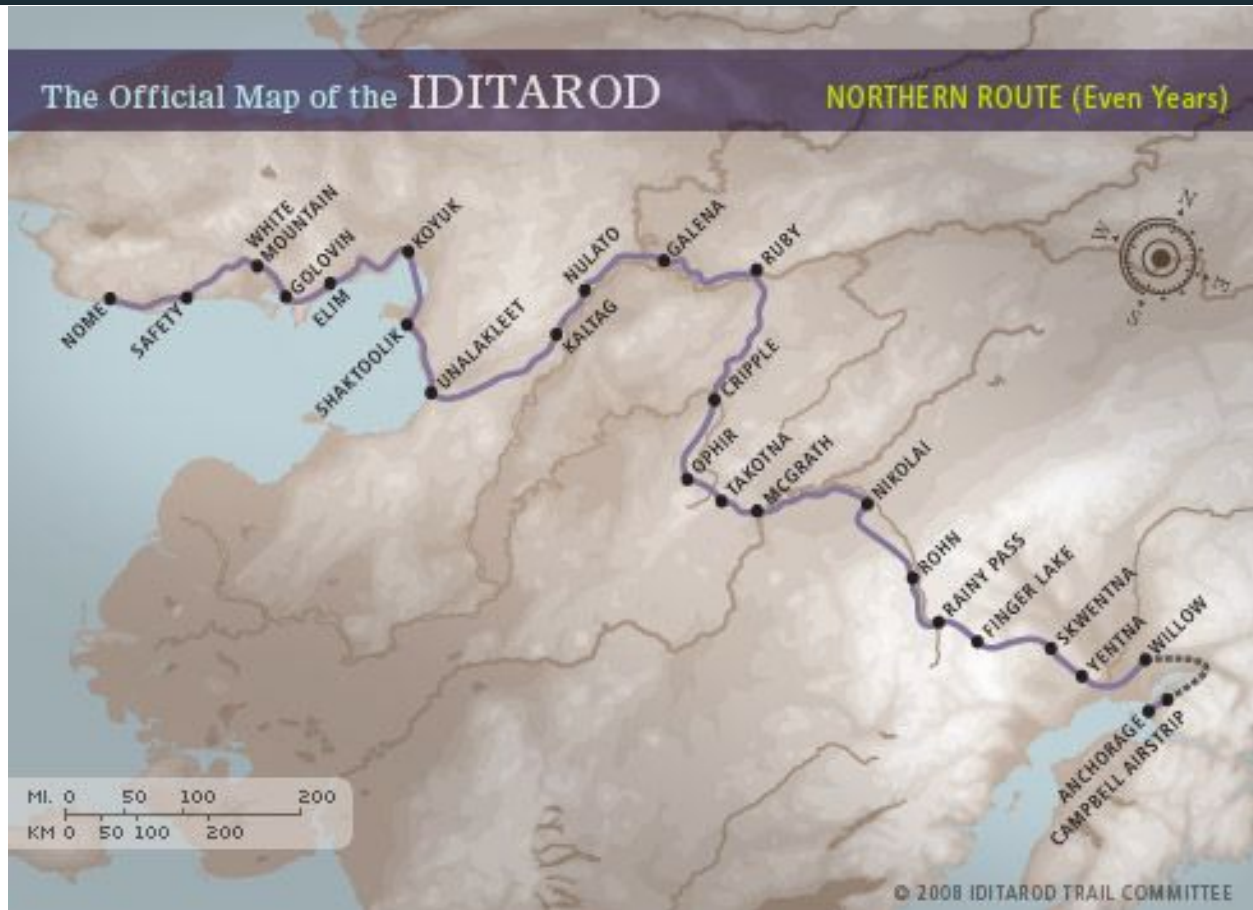
FACILITIES PLANNING
AND MANAGEMENT
217-581-2178

ACCESSIBILITY BUZZARD - 1ST FLOOR

REV: 5/9/11

DATE: 5/22/92 DRAWN BY: DB/JC

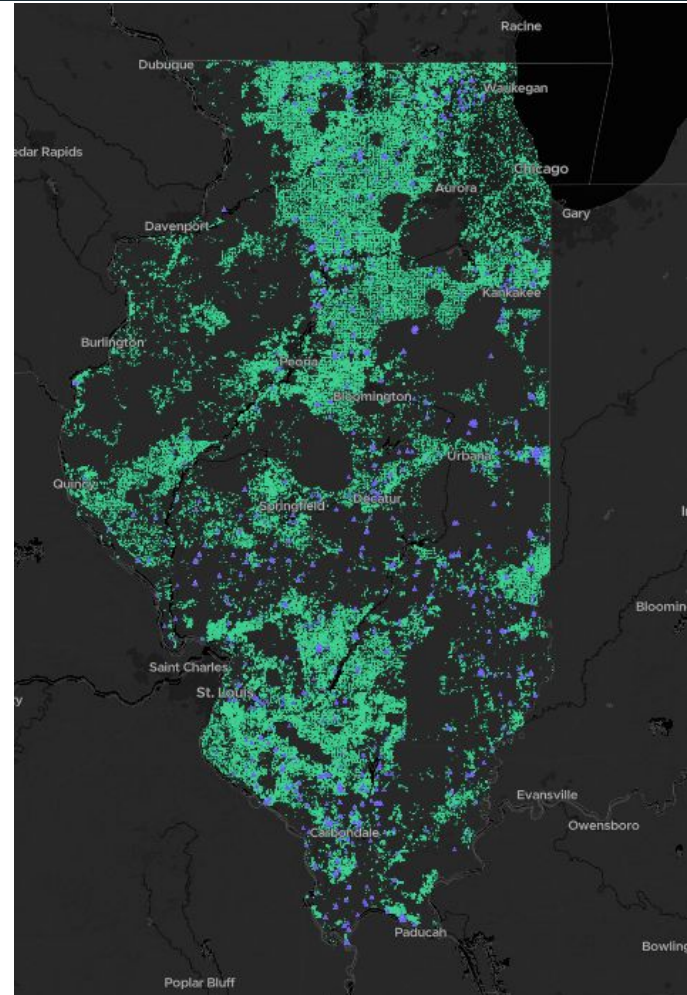
SCALE: NO SCALE ACAD: 19ACCES1

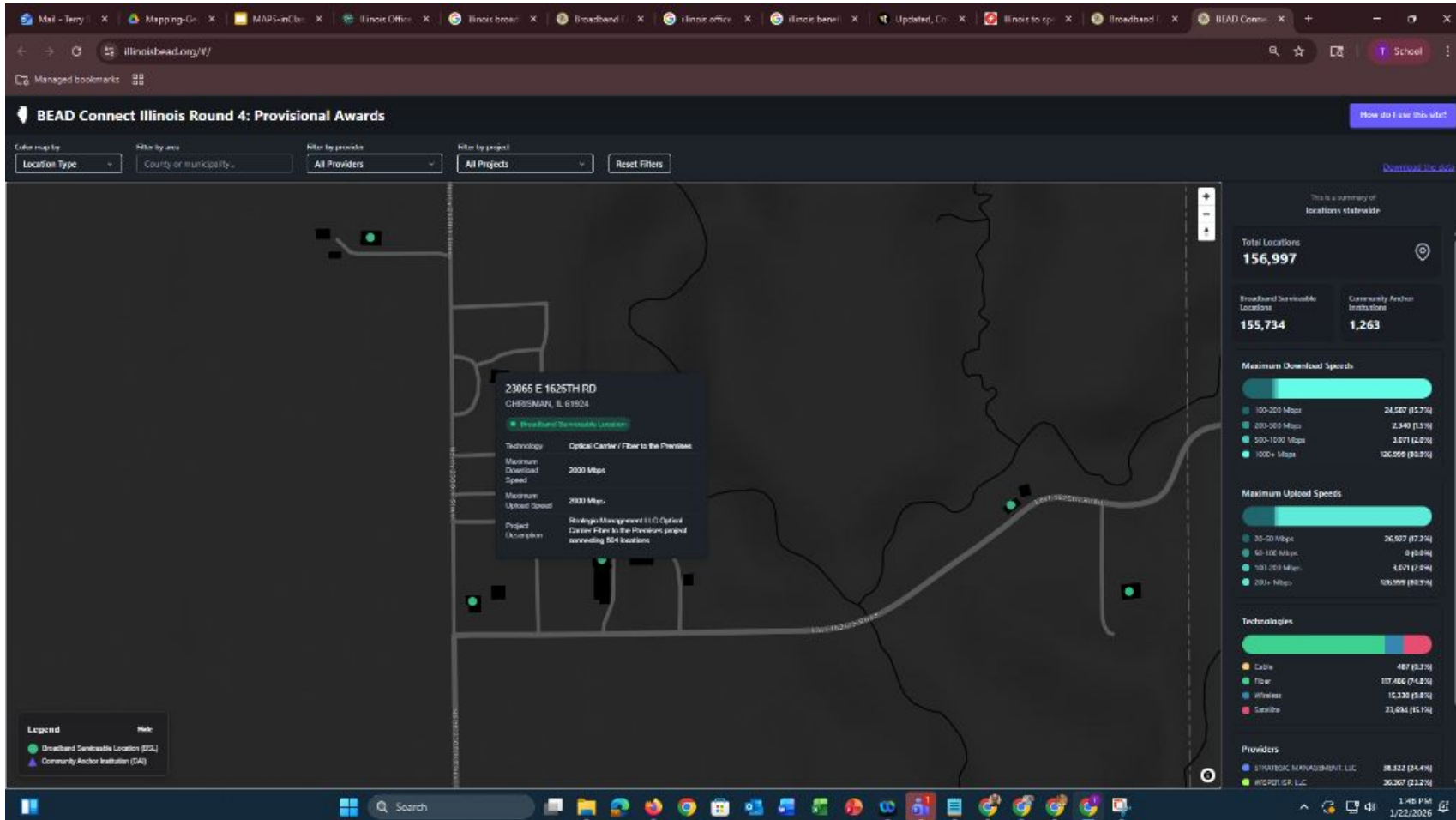


<https://iditarod.com/race-map/>

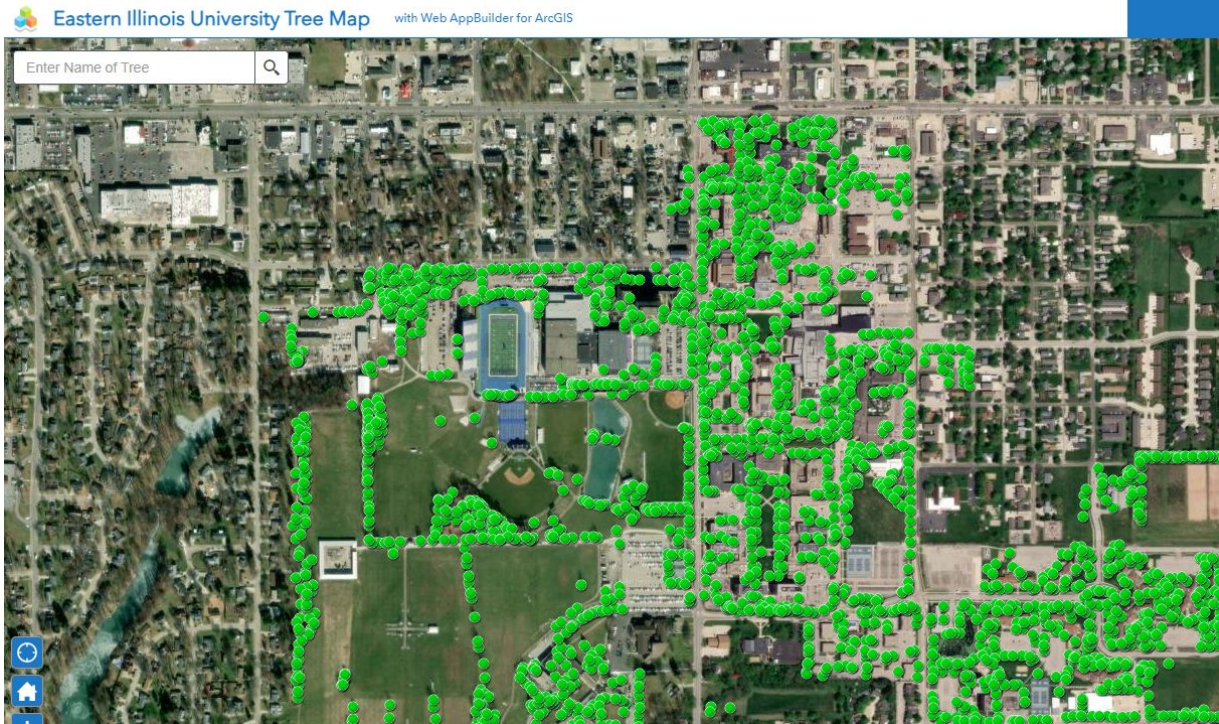
Illinois Broadband Maps Initial Selections

<https://www.illinoisbead.org/#/>





EIU Campus Tree Map

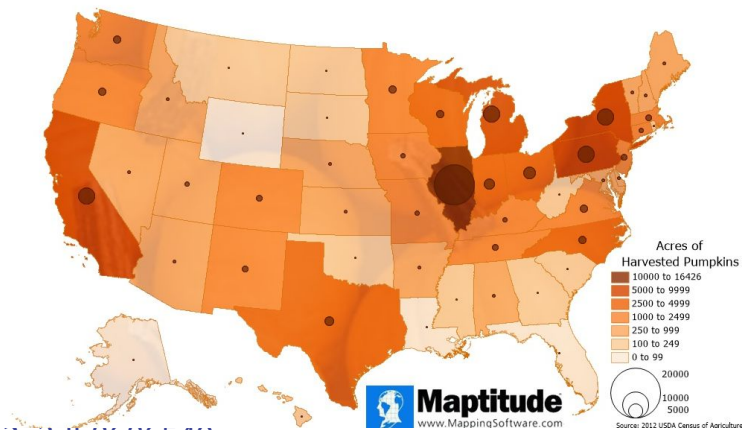


NASA Eclipse Map 2023



Pumpkins and Personal “My Maps”

Maptitude Featured Map Infographic:
Pumpkin Harvest by State



Farm Fun Pumpkin Patch

<https://funfarmpumpkinpatch.com/interactive-map/>

Esri - ArcGIS - Thanksgiving Harvest

<https://storymaps.arcgis.com/stories/d33a1386d15d4fce82462e3db8686549>

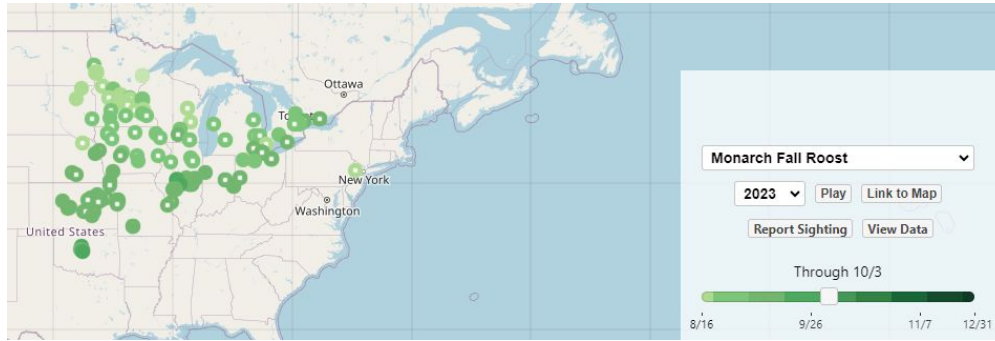
Google My Map

<https://www.google.com/maps/d/edit?mid=19NitfClVcn2ESAeuKpMm8vQAh855We3F&usp=sharing>

Monarch Migration 2023

Journey North

Citizen Science Map



Terence Sullivan is with Beth Sullivan and Maggie Sullivan Juscus in Brocton.

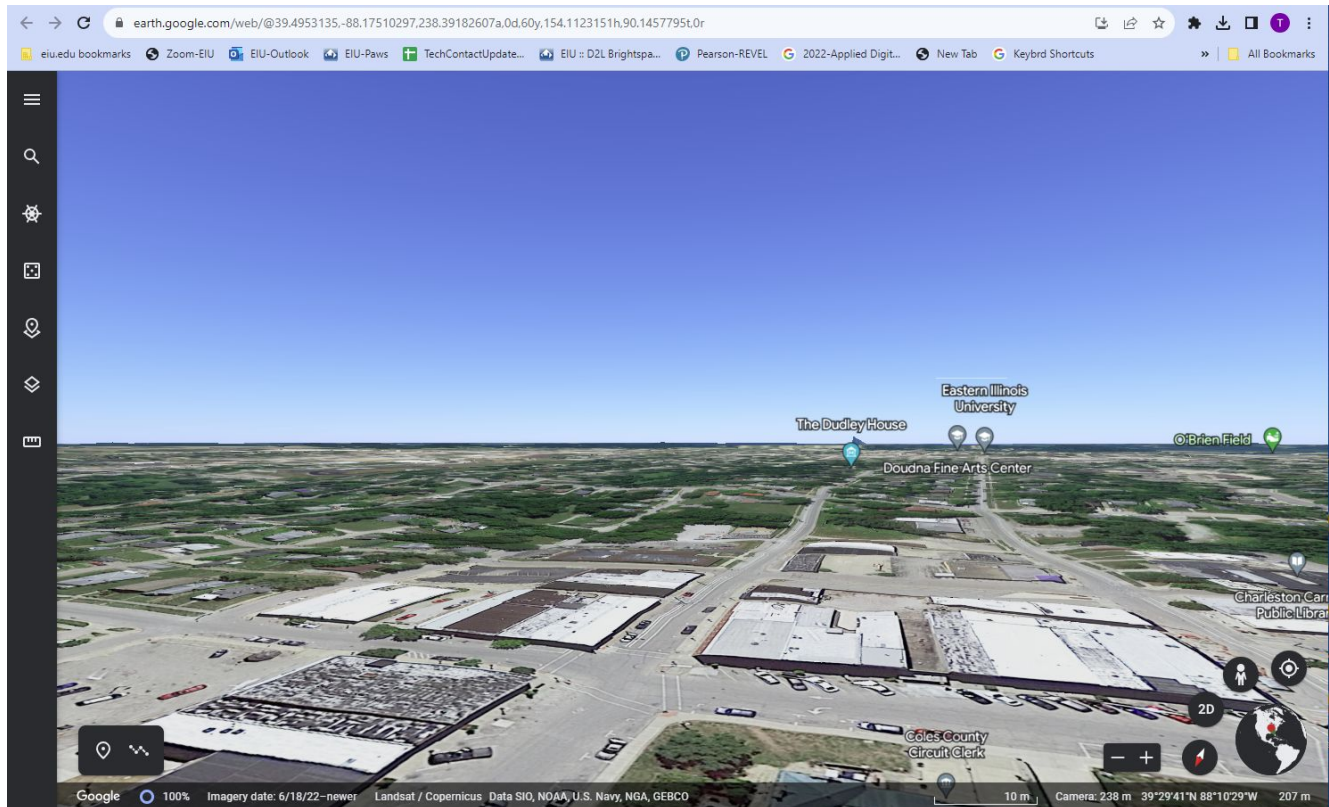
September 26, 2021 · 🌐

...

Monarch migration in progress. Sept 26 Layover at the Sullivan farm. Those in the Edgar, Douglas, Clark, Coles county area only will have a day or two before they've all moved through for this year.



Google Earth & Google Maps



MAPS in National and State Curriculum Standards

Maps have a strong and explicit connection. The Common Core State Standards (CCSS) for ELA include a specific strand called "**Literacy in History/Social Studies, Science, and Technical Subjects.**"

Maps are classified as "visual information" or "non-linear text." The standards require students to "read" a map just as they would read a paragraph—analyzing it for claims, evidence, and perspective.

Examples

- **Grade 3 (RI.3.7):** "Use information gained from illustrations (e.g., **maps**, photographs) and the words in a text to demonstrate understanding of the text (e.g., where, when, why, and how key events occur)."
- **Grades 6–8 (RH.6-8.7):** "Integrate visual information (e.g., in charts, graphs, photographs, videos, or **maps**) with other information in print and digital texts."
- **Grade 4 (RI.4.7):** "Interpret information presented visually, orally, or quantitatively (e.g., in... **interactive elements on Web pages**) and explain how the information contributes to an understanding of the text in which it appears."
 - *Note for your session:* This is perfect for the **National Geographic MapMaker** portion of your outline.
- **Grades 9–10 (RH.9-10.7):** "Integrate quantitative or technical analysis (e.g., charts, research data) with qualitative analysis in print or digital text."
- **Grades 11–12 (RH.11-12.7):** "Integrate and evaluate multiple sources of information presented in diverse formats and media (e.g., **visually**, quantitatively, as well as in words) in order to address a question or solve a problem."

Not just Social Science & Science, these are ELA standards

Where am I? (inquiry based learning



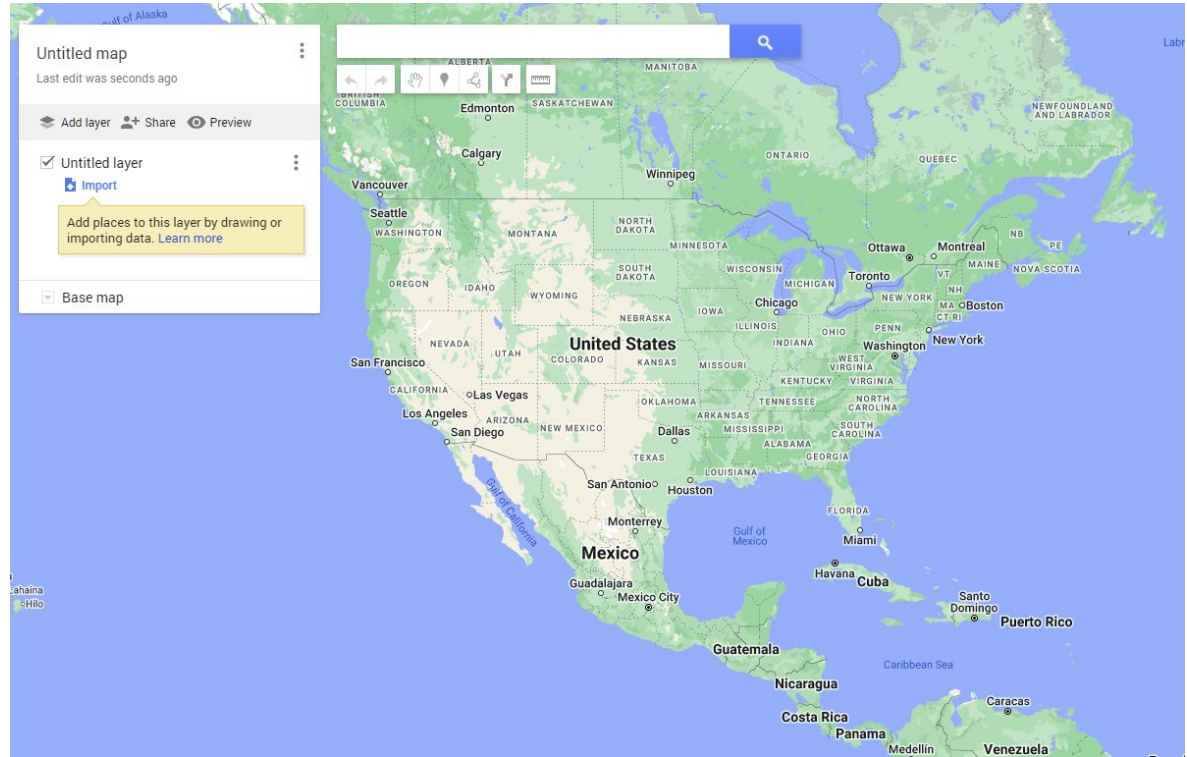
Map

Build a Map

[Google My Maps](#)

(part of Google Workspace/Docs)

[ESRI - ArcGis has an Education Program](#)



Matson Slave Trial


Matson v. Ashmore et al. for the use of Bryant - 1947

[Robert Matson](#) purchased land in [Coles County, Illinois](#) in 1836. Matson skirted the state laws that banned slavery by bringing slaves for only a year, returning them to Kentucky, and then replacing them with new slaves. Matson emancipated one of his slaves, Anthony Bryant, who acted as

Local abolitionists, [Hiram Rutherford](#) and [Gideon Ashmore](#)

Popular Free Apps for creating and using Maps

- **Digital Whiteboard such as Canva, Padlet, Google Draw, Explain Everything**
 - Paste image of map base onto whiteboard and then explore-zoom-annotate with lesson
- **National Geographic - Map Maker App - 2023** (created in cooperation with ESRI)
 - Easy, Free, no sign in needed
 - Can select base map and add prebuilt information layers
 - Can grab an image of final map or can save the map but saving does require creating a free account
- **Google My-Maps - 2007** (following Google Maps in 2005)
 - Can select base layer
 - Can annotate and add description boxes
 - Can add images to any location
- **ESRI - ArcGIS** - professional system but it is free for K-12 education. There is a learning curve.



Scribble Maps - general-purpose, feature-rich tool for drawing, annotating, and creating custom, shareable maps.

National Geographic MapMaker - education-focused, 2D/3D GIS tool designed for classroom use, featuring curated, professional datasets.

Time to Explore - Hands on with Mapping Tools

Try to collaborate on a common map



Questions/Discussion/Ideas





Questions-Comments!

tsullivan@eiu.edu

Slides

OBS - VDO Ninja screen share

LINK = <https://vdo.ninja/?v=snxRoFTL&p=0>