



**MAPS Implementation for Mozilla Firefox**

Document version 2.0

Last Updated 8/31/07



## TABLE OF CONTENTS

Introduction .....	3
Download Extension .....	4
Add Sites to IE Tab .....	9



## INTRODUCTION

The MAPS Applications (Argos, IntelleCheck, Admin Config) uses ActiveX to load a cab file on the client machine and to launch the applications. Using Microsoft Internet Explorer, the ActiveX functionality is enabled by default. In Mozilla Firefox, ActiveX is not natively supported, and requires some additional configuration. This document outlines the steps required to ensure Firefox will work with MAPS applications.

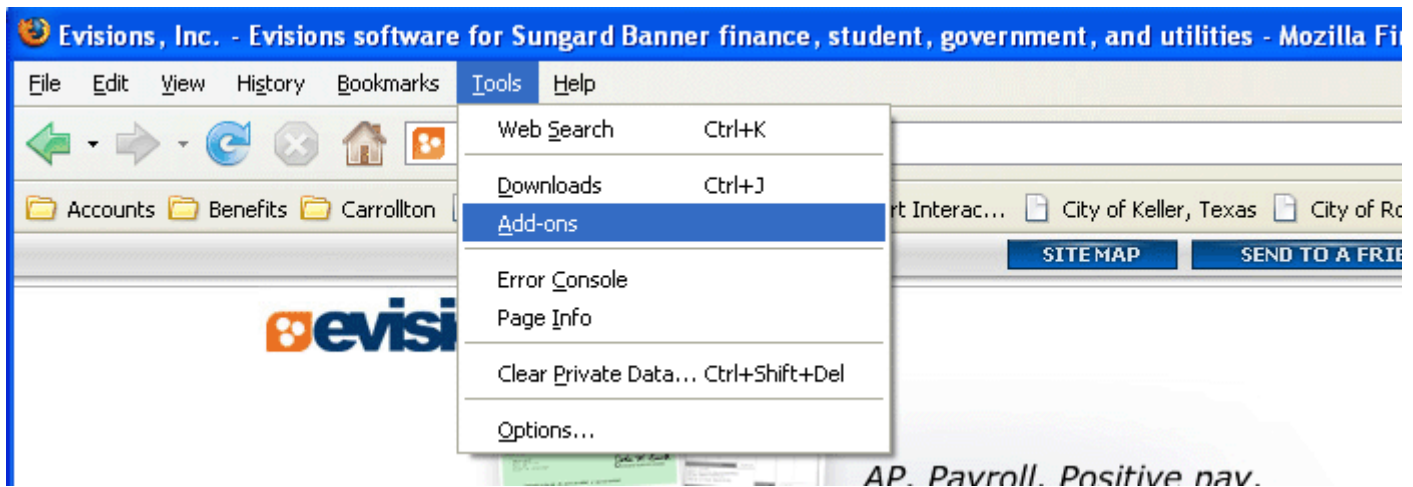
We encourage you to inform us of any errors you may find in this guide. We also ask that you forward suggestions that would make this document more relevant and understandable. We listen to our users, and we strive to improve our literature and products. Feedback can be sent to [support@evisions.com](mailto:support@evisions.com).



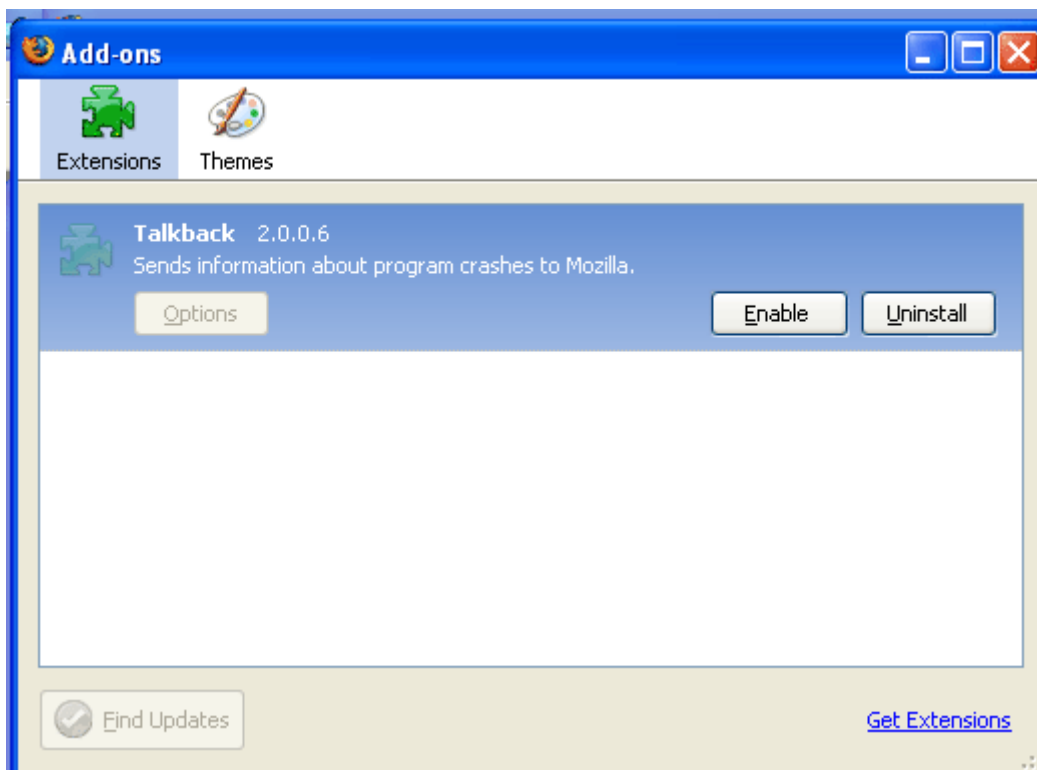
## DOWNLOAD EXTENSION

You will need to download and install a Firefox extension that allows selected sites to use Embedded Internet Explorer.

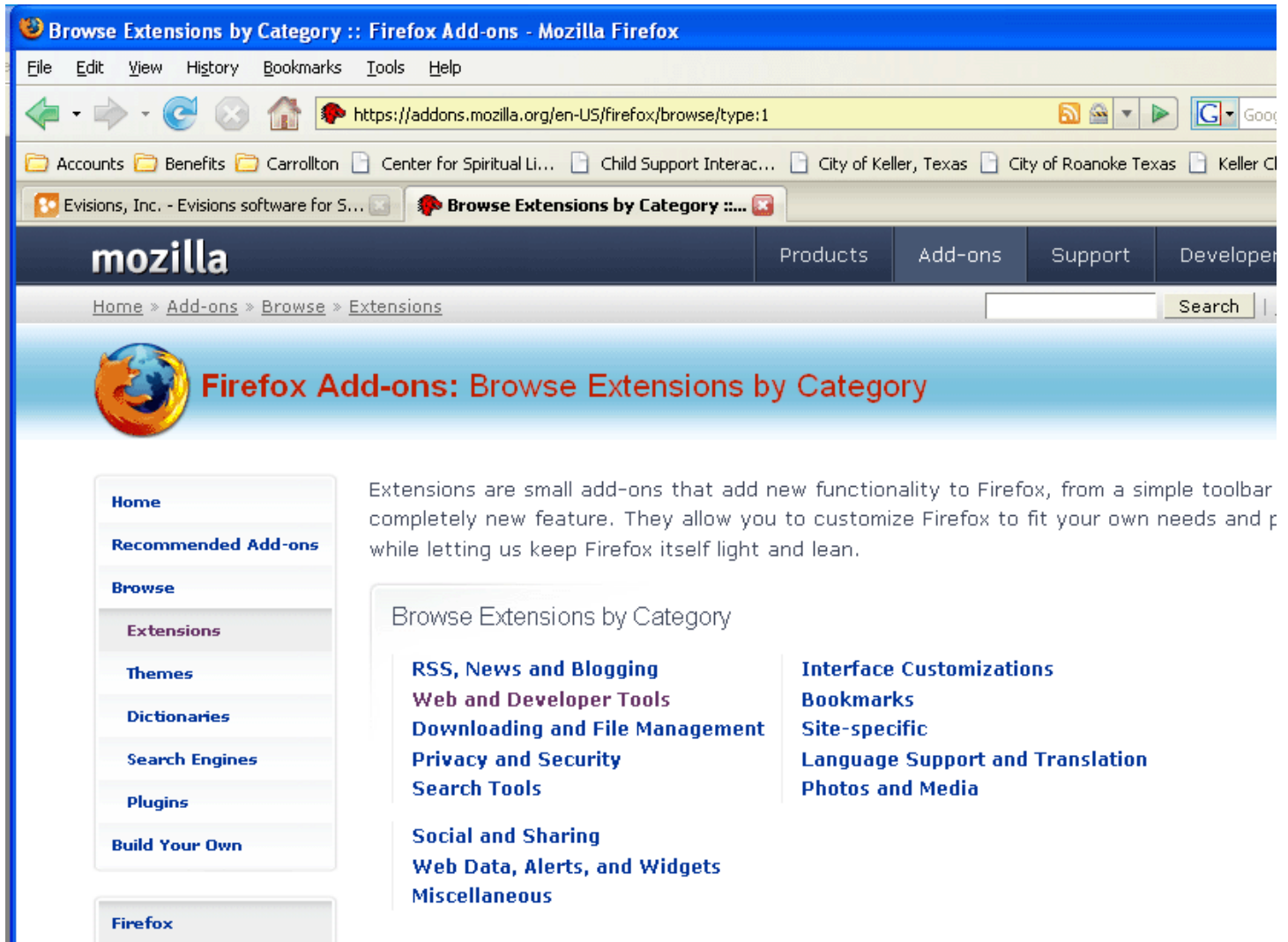
To get started, launch Firefox and navigate to Tools->Add-ons.



In the lower right-hand corner of the Add-ons dialog box, select the **Get Extensions** link.



You will be directed to the Firefox Add-ons site. Select the **Web and Developer Tools** link under **Browse Extensions by Category**.



The screenshot shows a Mozilla Firefox browser window with the address bar at <https://addons.mozilla.org/en-US/firefox/browse/type:1>. The page title is "Browse Extensions by Category :: Firefox Add-ons - Mozilla Firefox". The Mozilla logo is prominent at the top left, with navigation links for Products, Add-ons, Support, and Developer. A breadcrumb trail reads "Home > Add-ons > Browse > Extensions". The main heading is "Firefox Add-ons: Browse Extensions by Category".

On the left side, there is a navigation menu with the following items: Home, Recommended Add-ons, Browse, Extensions (highlighted), Themes, Dictionaries, Search Engines, Plugins, Build Your Own, and Firefox.

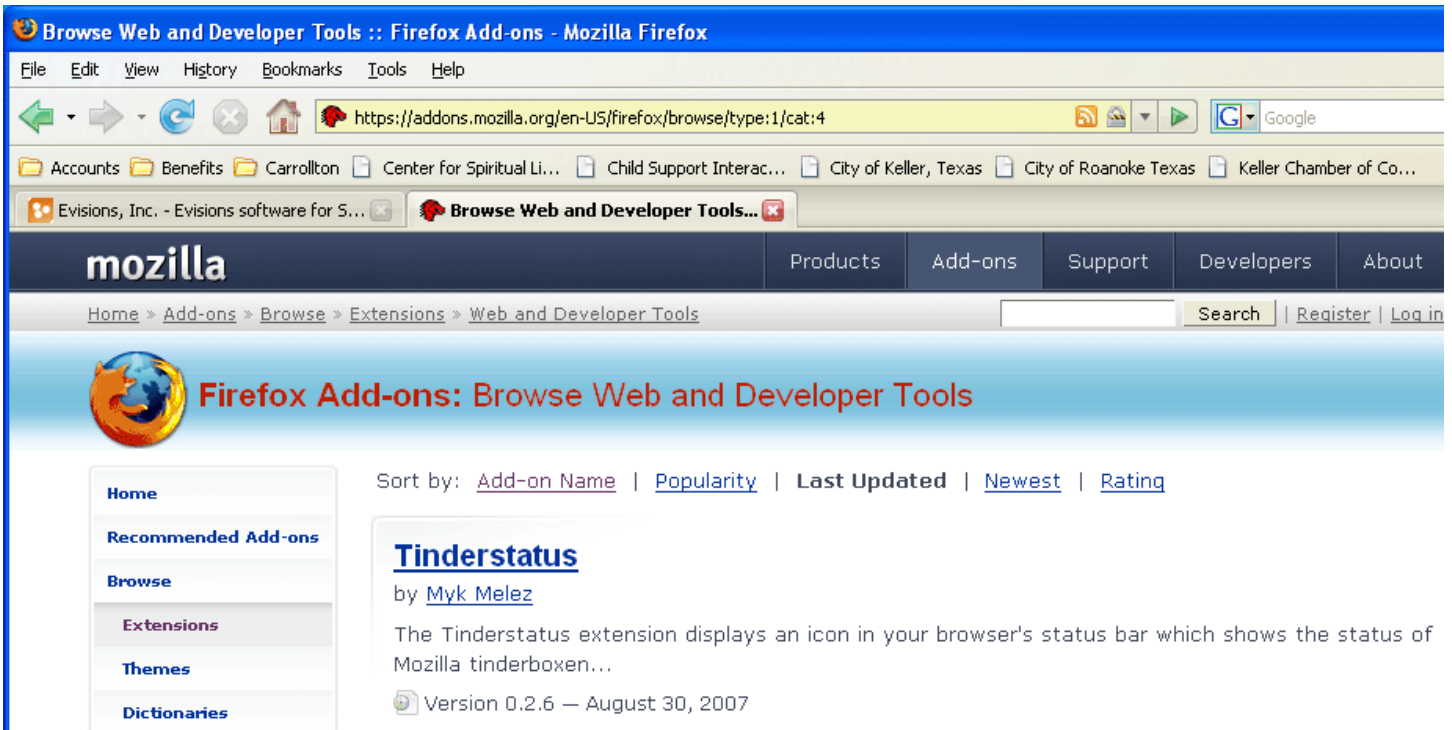
The main content area features a paragraph: "Extensions are small add-ons that add new functionality to Firefox, from a simple toolbar completely new feature. They allow you to customize Firefox to fit your own needs and preferences while letting us keep Firefox itself light and lean."

Below this paragraph is a section titled "Browse Extensions by Category" with two columns of links:

- RSS, News and Blogging**
- Web and Developer Tools**
- Downloading and File Management**
- Privacy and Security**
- Search Tools**
- Social and Sharing**
- Web Data, Alerts, and Widgets**
- Miscellaneous**

- Interface Customizations**
- Bookmarks**
- Site-specific**
- Language Support and Translation**
- Photos and Media**

Once the Browse Web and Developer Tools page has loaded, select the **Add-on Name** link next to **Sort by:**, so that all of the extensions in this category are alphabetized.



Locate the IE Tab extension, and click on the **IE Tab** name to download.



Click the **Install Now** button to install.

IE Tab :: Firefox Add-ons - Mozilla Firefox

File Edit View History Bookmarks Tools Help

https://addons.mozilla.org/en-US/firefox/addon/1419

Accounts Benefits Carrollton Center for Spiritual Li... Child Support Interac... City of Keller, Texas City of Roanoke Texas Keller Chamber of Co...

Evisions, Inc. - Evisions software for S... IE Tab :: Firefox Add-ons

mozilla Products Add-ons Support Developers About

Home » Add-ons » Extensions » IE Tab

Search Register Log in

## Firefox Add-ons

**Home**

Recommended Add-ons

Browse

- Extensions
- Themes
- Dictionaries
- Search Engines
- Plugins
- Build Your Own

Firefox

Thunderbird

SeaMonkey

Sunbird

Find Similar Add-Ons

- Web and Developer Tools

**IE Tab** 1.3.3.20070528

by [PCMan \(Hong Jen Yee\)](#), [yuoo2k](#)

*IE Tab - an extension from Taiwan, features: Embedding Internet Explorer in tabs of Mozilla/Firefox...*

This is a great tool for web developers, since you can easily see how your web page displayed in IE with just one click and then switch back to Firefox.

If you need some instructions. Please visit our official website on <http://ietab.mozdev.org>

Works with:

Firefox: 1.5 - 3.0a5

**Install Now (Windows)**

Developer Comments

\*\*\* Have any problems, questions, or suggestions? You can post on: <http://forums.mozillazine.org/viewtopic.php?t=505032>

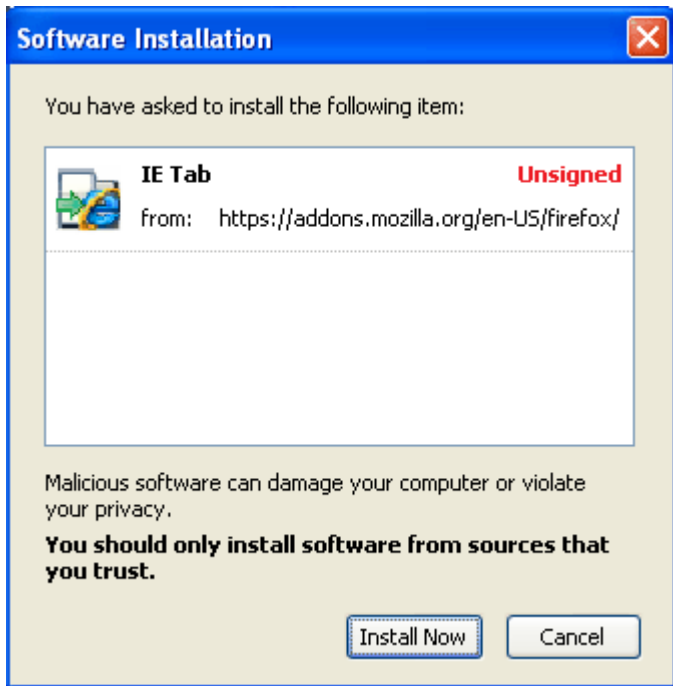
Version 1.3.3.20070528 — May 28, 2007 — 167 KB

- # Improved: Supports to trigger the IETAB loading progress events for multi-tabs.
- # Fixed: Failed to middle-click switch engine back to FX if the URL has already listed in the filterlist.
- # Fixed: File->SendLink does not work.

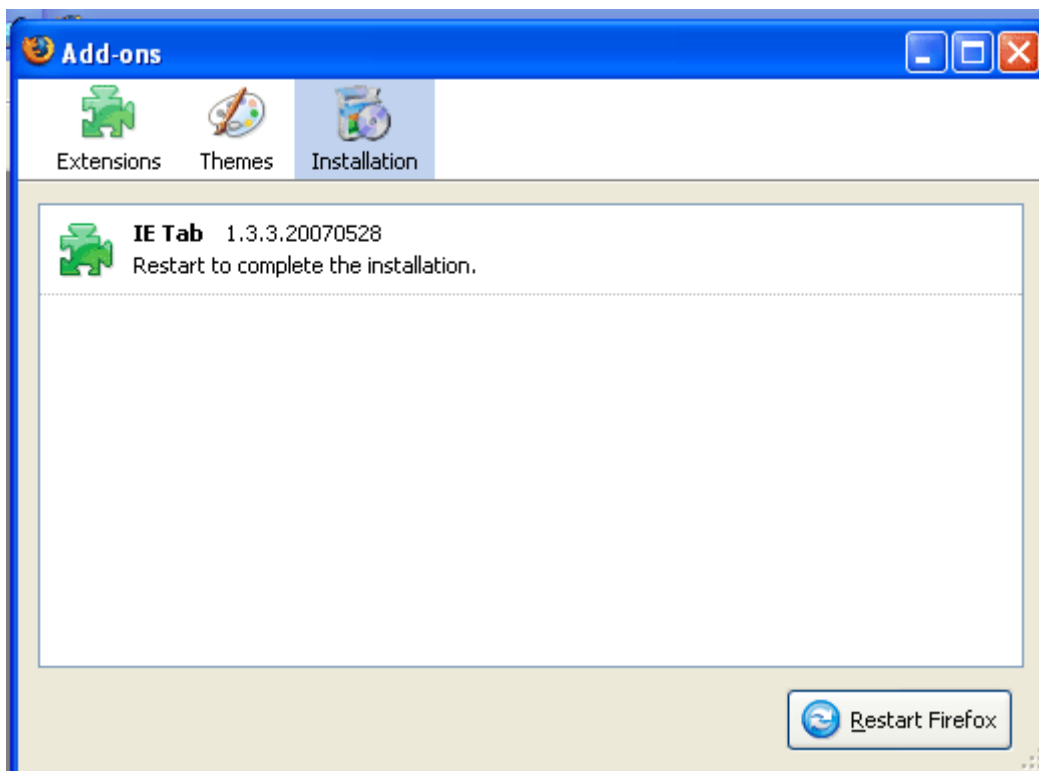
[Complete Version History](#)

Done addons.mozilla.org

The Software Installation dialog will appear and again, select the **Install Now** button.



Once the installation completes, you will need to shutdown Firefox by closing all of your existing Firefox windows or selecting the **Restart Firefox** button at the bottom of the Add-ons dialog.





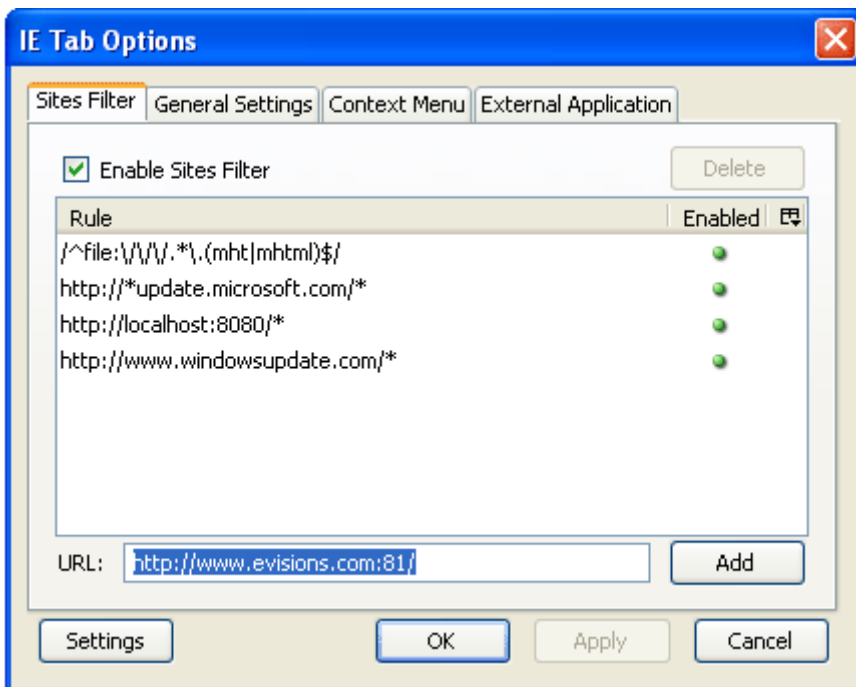


## ADD SITES TO IE TAB

Now that you have the IE extension installed, you need to add the sites that should use this extension.

Open a Firefox browser and go to **Tools->IE Tab Options**.

In the IE Tab Options dialog, enter the address of your MAPS server in the URL field, and select the **Add** button. Select the **OK** button.



Your MAPS applications will now work within Firefox! If you have any questions, please contact the Evisions HelpDesk.