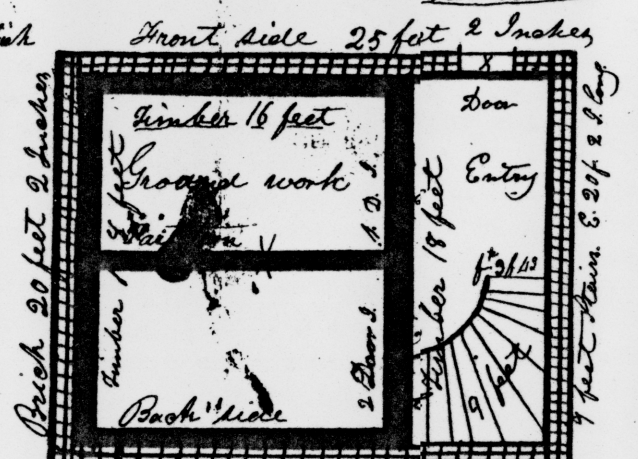
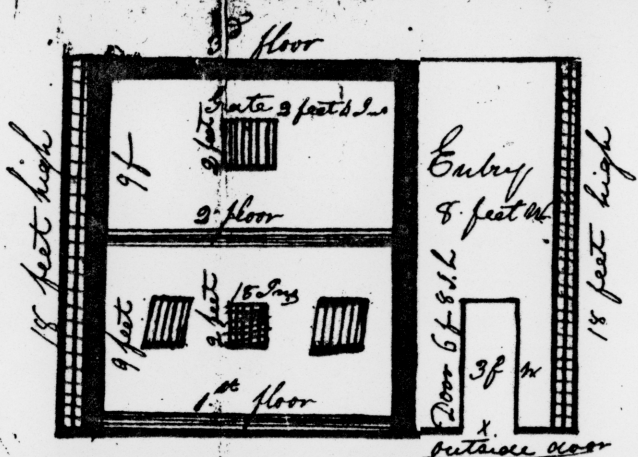


Sail to be built on lot no 5. Block No. 28. in Nantuxia
 Timber wall 16 feet wide, 18 long, squared 12 inches
 partition thro. The lower story timber 10 inches thick
 1. 2. & 3. floors timber squared 10 inches

The whole enclosed by Brick 13.5 thick
 wall 25 f 2 l long & 20 f 2.5 wide
 Entry eight feet wide at one end of
 stairs 9 feet from end of entry 3 f 4.5 wide
 1 door 3 f wide & 6 f 8 l high
 2 grates to each tower room 2 feet
 by 18 inches light windows
 1 grate in the upper room
 2 feet 4 inches by 2 feet 6
 light windows
 Shingle roof of 6.5 high
 above main body of
 house wood wall
 18 feet high
 2.5 l thick 18 l deep



foundatⁿ 25 inches thick sunk 18 inches in the ground
 1st Back side 25 f 2 l

