

Gettin', Bi



Schlesinger, A. (Writer), & Ehrlich, E. (Director). (2016). Getting' Bi [Television series episode]. In Bloom, R. and Brosh McKenna, A. (Producers), *Crazy Ex-Girlfriend*. Burbank, CA: The CW Network.



Bisexual Representation on TV Screens

“Instead of being treated as superfluous asides, bisexual characters have increasingly become part of the fabric of their respective shows.”

(Framke, 2018)

Brooklyn Nine-Nine’s Rosa (Stephanie Beatriz), *Jane the Virgin*’s Petra (Yael Grobglas), *Madam Secretary*’s Kat (Sara Ramirez), and *Crazy Ex-Girlfriend*’s Darryl (Pete Gardner) are challenging TV’s traditional view of bisexuality. Javier Zarracina/Vox (2018)

Myth #1

- Bisexuality does not really exist. People who consider themselves bisexuals are going through a phase, or are confused or undecided.
- Reality: Some people go through a transitional period of bisexuality on their way to adopting a lesbian/gay or heterosexual identity. For many others bisexuality remains a long-term orientation. For some bisexuals, homosexuality was a transitional phase in their coming out as bisexuals. Fence sitting is a misnomer; there is no "fence" between homosexuality and heterosexuality except in the minds of people who rigidly divide the two.



Myth #2

Bisexuals are promiscuous hypersexual swingers who are attracted to every woman and man they meet. Bisexuals cannot be monogamous, nor can they marry or live in traditional committed relationships. They can't be celibate.

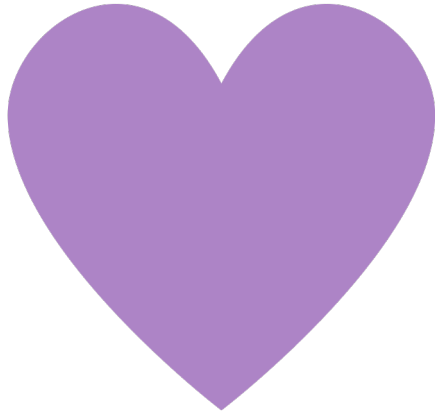
Reality: Bisexual people have a range of sexual behaviors. Like lesbians, gays or heterosexuals, some have multiple partners, some have one partner, and some go through their entire lives or certain periods without any partners. Promiscuity is no more prevalent in the bisexual population than in other groups of people.

Myth #3

Bisexuals get the best of both worlds and a doubled chance for a date on Saturday night.

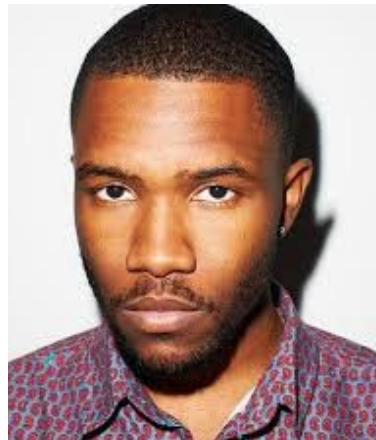
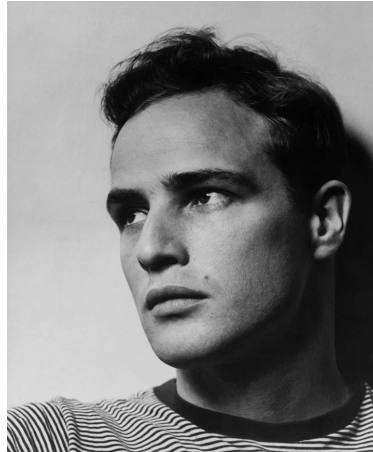
Reality: Combine our society's extreme heterosexism and homophobia with lesbian and gay hesitance to accept bisexuals into their community, and it might be more accurate to say that bisexuals get the worst of both worlds. As to the doubled chance for a date theory, that depends more upon the individual's personality than it does upon her/his bisexuality. Bisexuals don't radiate raw sex any more than do lesbians, gays, or heterosexuals. If a bisexual woman has a hard time meeting people, her bisexuality won't help much.

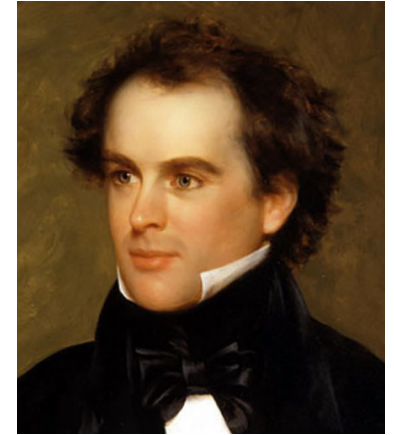
*Excerpted and altered from Sharon Sumpter's and Amanda Udis-Ressler's pieces on the myths and realities of bisexuality.
<http://www.csuohio.edu/offices/odama/glbt/bisexuality.pdf>



Notable Bisexual Celebrities

- Margaret Cho, comedian
- Marlon Brando, actor
- Frank Ocean, musician
- Alan Cumming, actor





Notable Bisexual Celebrities

- Drew Barrymore, actress
- Zoe Saldana, actress
- Nathaniel Hawthorne, author
- Shannon Purser, actress



Want to
Learn
More?



EIU Center for Gender and Sexual Diversity

- The EIU Center for Gender and Sexual Diversity aspires to create an inclusive community by instilling a culture of respect, advocacy, and empowerment towards an open, safe, and just campus.
- Stevenson Hall Lower Level
- Phone: 217-581-7117
- Email: lgbtqa@eiu.edu