

# ROOM FURNITURE

Be sure to move room furniture to the locations defined in the diagram

## DESKS

- set flush with wall
- hutches have already been affixed to desks
- final placement of desks should resemble the diagram shown on this poster

## SMALL DRESSERS

- small dressers should be placed in closets
- set flush with wall, drawers facing out
- final placement of small dressers should resemble the diagram shown on this poster

## MAKE SURE TO . . .

- use the pins to couple furniture pieces together
- you may request additional pins from your Greek Court Staff Member at no charge
- you will not be allowed to check out until all of your room furniture is moved to the locations defined in the diagram with the pins in the proper place
- please be aware that failure to properly assemble room furniture will result in a \$25 improper check out charge and a \$20 assembly charge

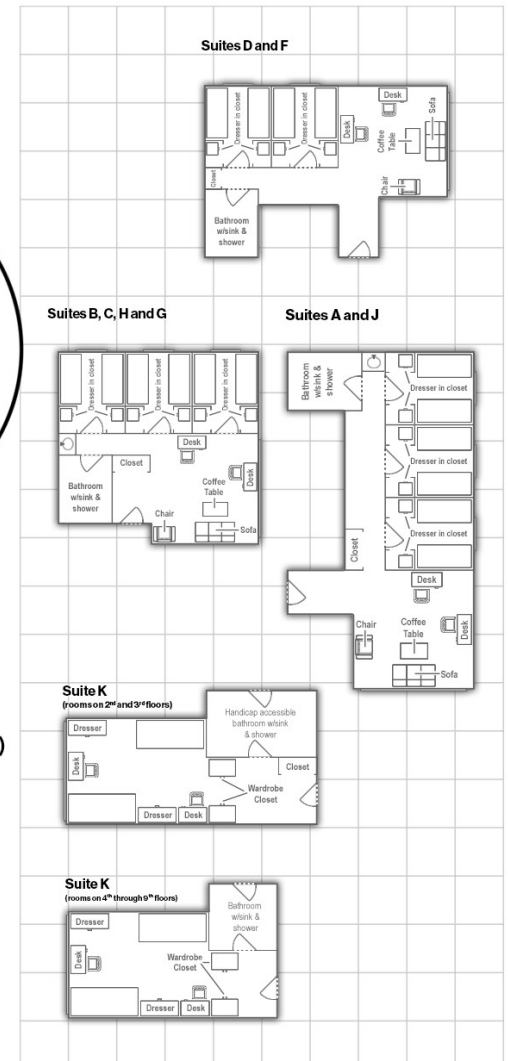
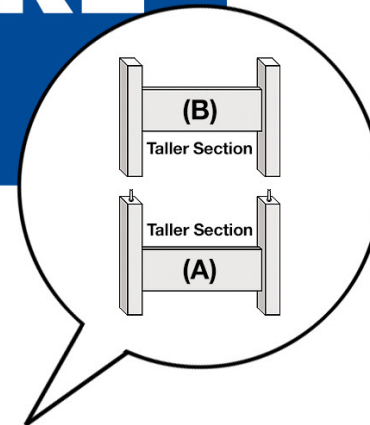
## BEDS

- should be bunked
- set flush with wall
- final placement of beds should resemble the diagram shown on this poster

## UNDER BED DRAWERS

(SOME ROOMS MAY NOT CONTAIN 'UNDER BED DRAWERS')

- drawers should be under the lower bed frame
- set flush with wall, drawers facing out
- final placement of chest of drawers should resemble the diagram shown on this poster



Layouts not to scale.