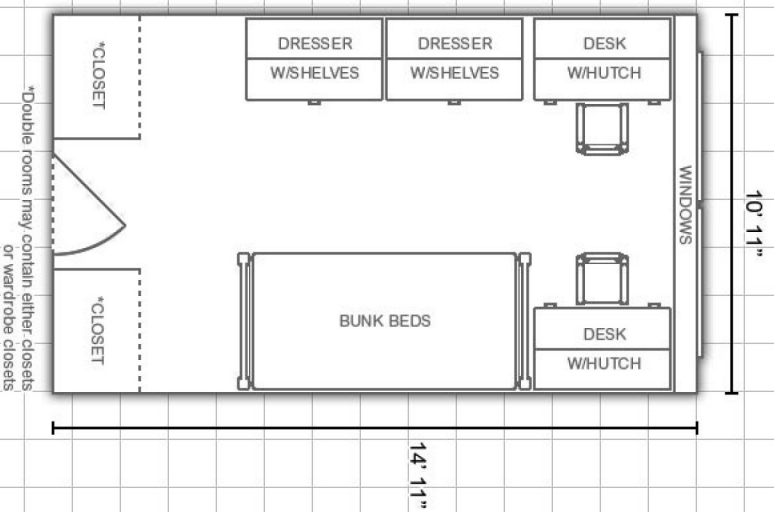


# LINCOLN HALL :

Information available at [www.eiu.edu/housing](http://www.eiu.edu/housing)

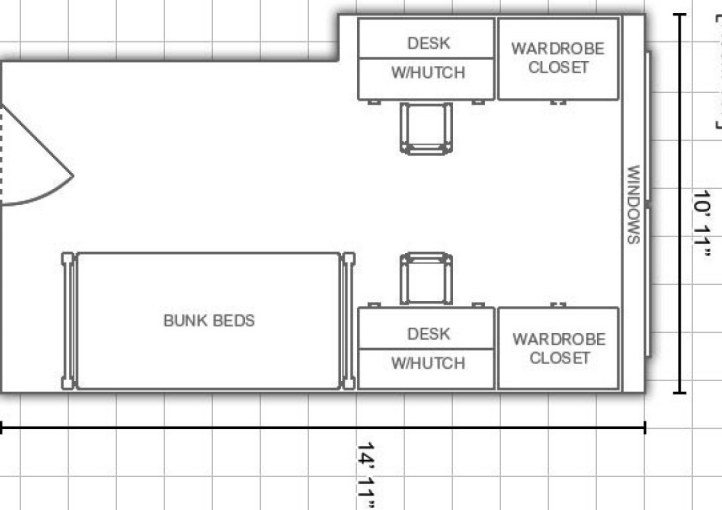


## Double Room:



## Double Room:

[Room 167]



More layouts on back!



### DEPARTMENT:



### Bedding:

Bedding in all rooms measure 80" X 39" (X-long twin)

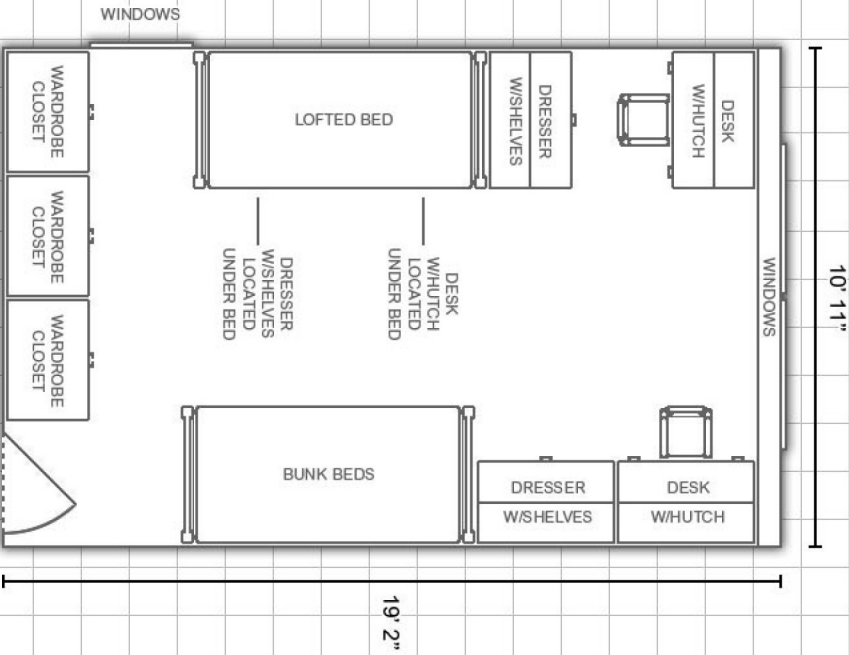
### Furnishings:

Rooms are carpeted and feature stackable, loftable and bunkable furniture

### Miscellaneous:

*Layouts are not to scale*

# Triple Room:



See front page for more information.