

Graduate Scholar

April 2020

Journal of Scholarship and Recognition



Hashni Epa Vidana Gamage, 2020 Robert and Kathryn Augustine
Distinguished Master's Thesis Award Winner

The Graduate School

EASTERN ILLINOIS UNIVERSITY™





Graduate Scholarship

Thesis Awards

Robert and Kathryn Augustine Distinguished Master's Thesis Award

Award of Excellence- College of Liberal Arts and Sciences

Award of Excellence- College of Education

Award of Excellence- College of Health and Human Services

King-Mertz Research/Creative Activity Awards

King-Mertz Distinguished Research Creative/Activity Award

Award of Excellence- College of Liberal Arts and Sciences

Award of Excellence- College of Education

Award of Excellence- College of Health and Human Services

Award of Excellence - Lumpkin College of Business and Technology

Research/Creative Activity Grants

Williams Travel Grants

Betty Wright Downing Graduate Scholarship

Frances Meyer Hampton Graduate Scholarship

Annie Weller Graduate Scholarship

Mary Bear McClay Graduate Scholarship

UPI Scholarship

GSAC Scholarships

Graduate Alumni Fund Outstanding Research/Creative Activity Award

Norm and Maria Plummer Outstanding Research Award

Hamand Society Scholars

Distinguished Graduate Students

Graduate Student Commencement Speaker



Eastern Illinois University Graduate Scholar
2019-2020 Academic Year

Editor: Lori Henderson, Graduate School

Photographer: Jay Grabiec, Web Services

The Graduate School and the Graduate Student Advisory Council publish the *Graduate Scholar* annually to recognize and honor those who have achieved excellence in graduate study at Eastern Illinois University.

Robert and Kathryn Augustine Distinguished Master's Thesis Award

Named for and supported by **Robert Augustine**, Ph.D., dean of the Graduate School from 1998 to 2015, and his wife **Kathryn**, an alumna of EIU's College of Education and Professional Studies, the Distinguished Master's Thesis Award recognizes the highest achievement in master's degree research.



Robert and Kathryn Augustine Distinguished Master's Thesis Award

Hashni Epa Vidana Gamage, Master of Science in Biological Sciences

Gopal Periyannan, Ph.D., Professor of Biochemistry, Faculty Mentor

Britto Nathan, Ph.D., Professor of Biological Sciences, Faculty Mentor

Functional Characterization of Glutamate Carboxypeptidase II in *Caenorhabditis elegans*

Glutamate carboxypeptidase II (GCPII) is a transmembrane zinc metalloprotease expressed in a number of organisms: from yeast to worm to humans. In humans, GCPII has been observed as a multifunctional protein and expressed in prostate, intestine, kidney, brain, tumor-associated neovasculature and other tissues as five paralogs. In the human small intestine, hGCPII is proposed to facilitate the folate absorption by cleaving terminal glutamate residues in dietary folates. Folates act as a cofactor in one-carbon metabolic pathways such as nucleotide synthesis, amino acid synthesis, DNA repair, and consequently involved in cell division and growth. The hGCPII homolog is found in the nematode *Caenorhabditis elegans* (cGCPII) as three paralogs and shares a high structural similarity with hGCPII. In this study, the *C. elegans* strains: wild-type (N2), and *gcp-2* deletion mutant strains: RB1055 (*gcp-2.1*), TM6632 (*gcp-2.2*) and TM5414 (*gcp-2.3*) were used to investigate the role of *gcp-2* in folate metabolism. This study shows that the *gcp-2.1* and *gcp-2.2* paralogs play a significant role in folate metabolism, reproduction, and embryonic and post-embryonic development in *C. elegans*. When the *gcp-2* mutant worms were fed with a folate-deficient diet, it showed folate deficient phenotypes, infertility and growth retardation, as observed in mice and humans. This work establishes, for the first time, the relationship between GCPII and folate metabolism in *C. elegans* as proposed for human folate metabolism. This study demonstrates that *C. elegans* can be used as a genetically tractable model organism to investigate the tissue-specific multifunctional roles of GCPII in development and reproduction of a multicellular organism.

Master's Thesis Award of Excellence in the College of Liberal Arts and Sciences

Jamie Lynn Golladay, Master of Arts in English
Daiva Markelis, Ph.D., Professor of English, Faculty Mentor

One Way: Miles to Go



This creative thesis is a memoir dedicated to a close examination of a childhood taking place in a meth-ridden Midwestern town under the supervision of meth-addicted parents. Using both prose and poetry to explore small excerpts of memory in a sequential vignette form, this memoir follows the author through early adolescence to middle school, tackling the issues of addiction in the home, prostitution, homelessness, and incarceration as well as more domestic points of interest like sibling bonds, childhood role play, and parent/child relationships. At its core, this narrative looks at the home and the family from the perspective of a growing young girl who is faced with learning about the world's darker aspects from an early age, who navigates and balances sisterhood, parenthood, school, and a home life steeped in a criminal world with constantly changing venues.

Master's Thesis Award of Excellence in the College of Education

Amanda Newmes, Master of Science in Education in Curriculum and Instruction
Sham'ah Md-Yunus, Ph.D., Professor of Elementary Education

The Effectiveness of Personalized Competency-Based Education on Student Engagement at the Secondary Level



This study examines the impact of Personalized Competency-Based Education (PCBE) on student engagement across varying ethnicities and grade levels. Personalized Competency-Based Education is built upon the premise that student learning should be based upon the following characteristics: learning is student-owned, learning accommodates flexible pacing, learning shows demonstration of proficiency, students track their own progress, and students determine their own learning pathways and goals. Since current research is limited on the impact of PCBE, especially at the secondary level of education, further study is needed in order to determine how PCBE implementation will effect student engagement. It was hypothesized that PCBE would have a significant impact on student engagement across grade levels 9-12 and all ethnicities. A survey method was used to collect data from 500 students in an urban high school setting in order to determine if there was a correlation between PCBE implementation and student demographics. The results of the study reveal that PCBE has a significant positive correlation on student engagement across all grade levels (9-12) and most ethnicities.



Master's Thesis Award of Excellence in the College of Health and Human Services

Mallory Krueger, Master of Science in Nutrition and Dietetics

Melanie Tracy Burns, Ph.D., Professor of Nutrition and Dietetics

Spice and Herb Use Among Cancer Patients

Purpose: The purpose of this study was to examine cancer patients' use of, perceived benefits, and beliefs about herbs and spices after their cancer diagnosis.

Methods: An online questionnaire was used to explore types of herbs and spices used by cancer patients and assess cancer patients' experiences with, and perceived benefits of, and beliefs about spice and herb use. The online questionnaire included three sections: herb and spice use, herb and spice attitudes, and cancer characteristics and demographics. Participants were recruited through online cancer groups and registered dietitian nutritionists.

Results: The study included 135 cancer patients. Participants (71.9%) were likely to use herbs and spices as a CAM modality and (74.8%) were interested in learning more information about the health benefits of herbs and spices. Only half of the participants (47.4%) were concerned about herb/spice-treatment interactions, but participants were significantly more likely to be concerned about herb/spice-treatment interactions if the participant received diet information from a doctor ($p = 0.018$). There were no significant relationships between time since their cancer diagnosis, cancer stage, age, ethnicity, income level, gender, or education level and frequency ($p = 0.618$) or change in herb and spice use ($p = 0.106$).

Conclusions: Cancer patients may benefit from receiving information on the benefits and precautions of herbs and spices following their cancer diagnosis, but future research is needed to determine the perceived benefits and risks of specific herbs and spices.

King-Mertz Research /Creative Activity Awards

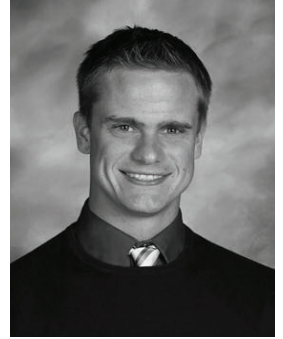
Nancie King Mertz, '77 graduate alumna from the program in Art, established the King-Mertz Research/Creative Activity Awards in 2010 to recognize the highest achievement in graduate research based on non-thesis graduate research/creative activity projects. A 2009 recipient of an Outstanding Graduate Alumni award and a Graduate Alumni Advisory Board member, Nancie has been actively involved in the visual arts as both a creative artist and a small business owner. She and her husband, Ron, own and operate Art De Triumph & Artful Framer Studios in Chicago's Lincoln Park.



One project is selected to represent the best non-thesis project from all graduate programs and a top project from each academic college is also selected.

King-Mertz Distinguished Research/Creative Activity Award

Michael Arrigoni, Master of Science in Education in Special Education
Jennifer Stringfellow, Ph.D., Associate Professor of Special Education, Faculty Mentor



Advocacy Prime Podcast Series

For a podcast series I titled, *Advocacy Prime*, I conducted research to gather the necessary information in order to develop the means of providing valuable information to, and for, individuals with significant disabilities. This research centered on the importance of developing self-determination skills across the lifespan and especially for young adults, aged 18-22 years. This is the population of individuals with disabilities that represented my teaching assignment as well as the group for which I am passionate about improving outcomes beyond school. Outcomes such as self-determination skills include learning to make choices, developing a positive sense of self, interacting with others, and interests beyond school. I also researched the inclusion of families, friends, and advocates in supporting the development of self-determination. I sought out people who would be willing to be interviewed in order to produce the podcasts and developed potential questions to guide the interviews. Finally, I contacted people who could help provide the appropriate equipment to film/record, edit, and upload the podcasts to various platforms.

**King-Mertz Research/Creative Activity Award of Excellence in the
College of Liberal Arts & Sciences**



Hannah Smothers, Master of Arts in Political Science

Ryan Burge, Ph.D., Assistant Professor of Political Science, Faculty Mentor

Unconventional Political Behavior and the Notorious RBG

Over the past decade, Justice Ruth Bader Ginsburg has gone from an unknown Supreme Court Justice to a pop culture phenomenon. At the same time, the way young people participate politically has been changing. Ginsburg was always a beacon for gender rights and wrote invigorating opinions on the Court, but did not become a phenomenon until her dissent in the 2013 Supreme Court case *Shelby County v. Holder*, where Ginsburg penned a dissent that made her the new face of the liberal agenda, when she wrote "...race-based voting discrimination still exists. This court's decision is like throwing away your umbrella in a rainstorm because you are not getting wet" (*Shelby County v. Holder*, 570 U.S. 2013; West and Cohen 2018). Justice Ginsburg became the Notorious RBG, young progressives began making memes, and the movement took off from there (West and Cohen 2018). This work assesses her popularity and the shift in political participation by using a quantitative approach and comparing her to the other two female justices on the court through Twitter, and Etsy listing mention. This work hypothesized that people are turning away from conventional voting, and turning to expressing themselves politically on social media, and through the purchase of politically charged items. This project used R statistical coding software along with the package rTweet to scrape and analyze twitter and Etsy data in order to outline her popularity. This project is important to the field because these new forms of political participation, political hobbyism, and political consumerism, are becoming popular and being favored by young people suggesting a shift in political participation across the board.



King-Mertz Research/Creative Activity Award of Excellence in the College of Education

Haley Hawkins, Master of Science in Education in Curriculum and Instruction
Sham'ah Md-Yunus, Ph.D., Professor of Elementary Education

The Efficacy of Approaching Homework as a Formative Self-Assessment in a High School

The purpose of the study was to determine the effect of treating homework as a formative self-assessment, where participants graded and corrected their own assignments, had on a summative unit assessment. The researcher also wanted to determine the effect the treatment had on the participants' mathematics self-efficacy. Two research questions guided this study: Does the treatment of homework as a formative self-assessment have an effect on the participants' average scores on a summative unit assessment compared to those whose homework was graded and handed back by the teacher? And does grading treating homework as a formative self-assessment have an effect on participants' self-efficacy towards mathematics? It was hypothesized that by treating homework as a formative self-assessment, participants in the experimental group would have higher average scores on the summative assessment than the control group of participants. Also, it was hypothesized that the participants in the experimental group would have higher self-efficacies. Thirty-four ninth and tenth grade students from two of the researcher's Algebra I classes participated in the six-week study: one class was the experimental group and the other was the control group. The researcher used two different instruments on both groups: A summative unit assessment that was used to compare the two groups' average scores. And a five-point Likert-scale mathematics self-efficacy survey used to compare the two groups' average rating scores. The experimental group's average score was 7.20% higher than the control group on the unit assessment. Also, compared to the control group, the average rating score for the experimental group was 0.30 points higher on the self efficacy survey.

King-Mertz Research/Creative Activity Award of Excellence in the College of Health and Human Services

Sarah Sharp, Master of Science in Nutrition and Dietetics
Melanie Tracy Burns, Ph.D., Professor of Nutrition and Dietetics

***Use of Instagram to Convey Nutrition Information to Collegiate Athletes:
A Needs Assessment***

As social media use has become more popular, many nutrition professionals have elected to use these platforms to promote nutrition education and services. Of these platforms, the Instagram application is most commonly utilized by college-aged individuals. With the rise of sports nutrition programs among collegiate athletic departments, nutrition professionals are opting to utilize Instagram to provide ongoing nutrition education to student athletes through this digital interface. The purpose of this study was to investigate which types of sports nutrition content, via Instagram posts, appears to be most effective among account followers. Of all known collegiate sports nutrition Instagram accounts (n=63), the study sample was comprised of 15 accounts. Over the course of a five-week period, the accounts were examined on a daily basis for posts made within specific categories (n=12). Of the 12 active Instagram accounts, a total of 122 posts and 4522 likes were made. The categories with the greatest number of posts included Food Feature, in which the nutritional benefits of a specific food were highlighted (n=33); Fuel Station, in which foods available in the athletic dining facilities or snack bars were featured (n=15); Selfies, in which individuals posted pictures of how students nourished their bodies for performance (n=15); and Special Events, in which posts promoted upcoming sports nutrition-related programs (n=15). Similarly, those categories also had the greatest engagement in terms of the number of likes (n=2847 collectively). Due to the relevance and novelty of this research, this study is one of the first of its kind to investigate the use of Instagram among collegiate sports nutrition professionals to reach their followers through classified posts. These results can inform the content of Instagram posts to reach a larger audience of collegiate athletes.



King-Mertz Research/Creative Activity Award of Excellence in the Lumpkin College of Business and Technology

Ran Ahn, Master of Business Administration
Melody Wollan, Ph.D., Professor of Management, Faculty Mentor



The Knowledge Sharing-Hiding Dilemma: A Continuum of Choices

Employees need to update their knowledge quickly and frequently to survive in a competitive and dynamic business environment. Every day employees communicate with coworkers working closely around them, and as typically sanctioned in the organizations, seek assistance in the work place in performing their duties and responsibilities. Many researchers have studied the factors that influence and restrict knowledge sharing. However, there is limited research on knowledge hiding. Unlike existing research that addresses knowledge sharing and knowledge hiding separately, we use social exchange theory to put forth propositions related to pro-social behavior, self-efficacy, knowledge diffusion, power distance and supervisor's expectancy demonstrating that the acts of knowledge sharing and knowledge hiding may actually occur simultaneously on the same continuum, influenced by common factors.

Graduate School Research/Creative Activity Grants

Graduate School Research/Creative Activity Grant

Katherine Breen, Masters Candidate in Nutrition and Dietetics
Funding for Incentives to Participate in EIU Employee Wellness Program
Melanie Burns, Ph.D., Professor of Nutrition and Dietetics, Faculty Mentor
EIU Human Resources and Benefits, Research Partner



Graduate School Research/Creative Activity Grant

Jessica Derham, Masters Candidate in Biological Sciences
Determination of the Functional Significance of Glutamate Carboxypeptidase II in Folate Metabolism in Caenorhabditis elegans
Gopal Periyannan, Ph.D., Professor of Biochemistry and
Britto Nathan, Ph.D., Professor of Biological Sciences, Faculty Mentors



Graduate School Research/Creative Activity Grant

Esther Afrakoma Appiah Dwaah, Masters Candidate in Political Science
Opting out: How the Existence of Personal Intimate Digital Media May be Keeping Women out of Politics and "A Rush of Blood": Comparing Blood Delivery Policies in the Fight to Decrease Maternal Mortality Worldwide
Paul Janssen Danyi, Ph.D., and Erin Rowland, MPPA,
Instructors of Political Science, Faculty Mentors



Graduate School Research /Creative Activity Grant

Obinna Franklin Ezeibekwe, Masters Candidate in Economics
Financial Development and Economic Growth: Panel Data Evidence from Ten Developed Countries
Mukti Upadhyay, Ph.D., Professor of Economics, Faculty Mentor



EASTERN ILLINOIS UNIVERSITY
GRADUATE SCHOLAR

Graduate School Research /Creative Activity Grants

Graduate School Research/Creative Activity Grant

Reuben Frey, Masters Candidate in Biological Sciences

Micropterus Species Abundance in Relation to Low-head Dams in a Midwestern River System

Robert Colombo, Ph.D., Professor of Biological Sciences, Faculty Mentor



Graduate School Research /Creative Activity Grant

Godwin Gyimah, Masters Candidate in History

“That New Africa is Ready to Fight Its Own Battles”: Kwame Nkrumah, the United States, and the Quest for a Modern Ghana, 1957-1966

Ed Wehrle, Ph.D., Professor of History, Faculty Mentor



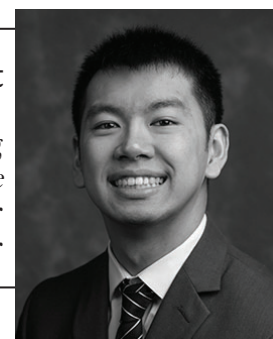
Graduate School Research/Creative Activity Grant

Alexander Harn, Masters Candidate in School Counseling

B.I.O.N.I.C.: Empowering Young Leaders to Create a Positive School Climate

Heidi Larson, Ph.D., Professor of Counseling, Faculty Mentor

Mattoon High School, Research Partner



Graduate School Research/Creative Activity Grant

Rhoda Inkoom, Masters Candidate in Chemistry

*Xylan Utilization by *Caulobacter crescentus**

Gopal Periyannan, Ph.D., Professor of Biochemistry, Faculty Mentor



Graduate School Research/Creative Activity Grant

Christine Kariuki, Masters Candidate in Sustainable Energy

Sustainability Initiatives Tracking and Reporting in Eastern Illinois University

Nichole Hugo, Ph.D., Assistant Professor of Hospitality and Tourism, Faculty Mentor



Graduate School Research/Creative Activity Grant

Derick Isaac Lamptey, Masters Candidate in Biological Sciences

*Evaluating Seasonal Variation in Mitochondrial Bioenergetics of the Bluegill Sunfish, *Lepomis Macrochirus* from the Sangamon River*

Eloy Martinez, Ph.D., Assistant Professor of Biological Sciences, Faculty Mentor



Graduate School Research/Creative Activity Grant

Caitlin Mrowiec, Masters Candidate in Biological Sciences

Group Decision Making in American Crows

Eric Bollinger, Ph.D., Professor of Biological Sciences, Faculty Mentor





Graduate School Research/Creative Activity Grant

Tyler Murray, Masters Candidate in Biological Sciences
Assessment of Catfish Population Dynamics in Four Illinois Powerplant Lakes
Dr. Eden Effert-Fanta, Ph.D., Instructor of Biological Sciences, Faculty Mentor
Illinois Department of Natural Resources, Research Partner

Graduate School Research/Creative Activity Grant

Zarek Nolen, Masters Candidate in Curriculum and Instruction
Korean War Coverage in the United States History Textbooks
John Bickford, Ph.D., Associate Professor of Curriculum and Instruction, Faculty Mentor



Graduate School Research/Creative Activity Grant

Olamide Olayinka, Masters Candidate in Biological Sciences
Immune Response to Posthodiplostomum Minimum Infection in Blue Gills
Jeffrey Laursen, Ph.D., Professor of Biological Sciences, Faculty Mentor

Graduate School Research/Creative Activity Grant

Manjil Puri, Masters Candidate in Sustainable Energy
Design of Regenerative Braking System for a Solar Powered Electric Go Kart at Slower Speeds
Nichole Hugo, Ph.D., Assistant Professor of Hospitality and Tourism, Faculty Mentor



Graduate School Research/Creative Activity Grant

Dakota Radford, Masters Candidate in Biological Sciences
Blue Sucker Population Demographics in an Un-impounded River and Relative Precision of Multiple Hard Structures for Estimating Ages of Blue Suckers, Cycleptus Elongatus
Robert Colombo, Ph.D., Professor of Biological Sciences, Faculty Mentor
University of Minnesota and IDNR, Research Partners

Graduate School Research/Creative Activity Grant

Kyle Rempe, Masters Candidate in Biological Sciences
Differences in Growth and Bioenergetics for Black Crappie and Bluegill in a Midwestern Power Plant Lake
Eloy Martinez, Ph.D., Assistant Professor of Biological Sciences, Faculty Mentor



Graduate School Research/Creative Activity Grant

Asmita Saha, Masters Candidate in Clinical Psychology
Investigating the Role of Fear of Missing Out in the Relationship Between Fears of Evaluation and Social Anxiety
Wesley Allan, Ph.D., Associate Professor of Psychology, Faculty Mentor

EASTERN ILLINOIS UNIVERSITY
GRADUATE SCHOLAR

Graduate School Research/Creative Activity Grant

Anchal Singh, Masters Candidate in Chemistry
*Quantitative Determination of Subcellular Localization of Peroxisome
Targeting Sequences in Living Cells*

Michael Beck, Ph.D., Assistant Professor of Biochemistry, Faculty Mentor



Graduate School Research /Creative Activity Grant

Toluwalase Solomon, Masters Candidate in Curriculum and Instruction
The Juxtaposition of Social Studies Curricula in Nigeria and the United States

John Bickford, Ph.D., Associate Professor of Curriculum and Instruction, Faculty Mentor



Graduate School Research/Creative Activity Grant

Missy Stone, Masters Candidate in Communication Studies
*How All In Are We Really: An Examination of Eastern Illinois University's "All In" Branding
Campaign's Impact on Tenured Faculty Members' Organizational Identification and Commitment*

Matthew Gill, Ph.D., Associate Professor of Communication Studies, Faculty Mentor



Graduate School Research/Creative Activity Grant

Jhalak Timilsena, Masters Candidate in Chemistry
Synthesis of Novel Small Organic Molecules as Peroxisome Modulators

Michael Beck, Ph.D., Assistant Professor of Biochemistry, Faculty Mentor



Graduate School Research/Creative Activity Grant

Jenny Trafford, Masters Candidate in Biological Sciences
Effects of Mutualistic Fungi on the Growth and Stress Responses of Hazelnuts

Scott Meiners, Ph.D., Professor of Biological Sciences, Faculty Mentor
Savanna Institute, Research Partner

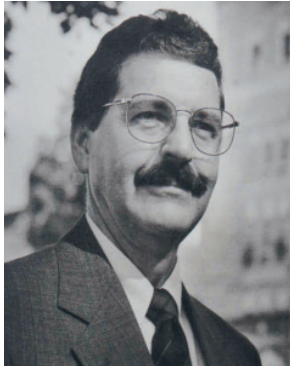


Graduate School Research/Creative Activity Grant

David Yff, Masters Candidate in Biological Sciences
Biotic and Abiotic Drivers of Larval Asian Carp in Illinois and Wabash River Tributaries

Eden Effert-Fanta, Ph.D., Instructor of Biological Sciences, Faculty Mentor
Illinois Natural History Survey, Research Partner





Williams Travel Grants

Named for **Larry Williams**, Ph.D., dean of the Graduate School from 1978 to 1995, the Travel Grants provide support for students to present their research at regional, state, national or international conferences. These awards have been supporting graduate student travel since Dean Williams's retirement in 1999. The grants are awarded in the fall and the spring.



Williams Travel Grant

Ran Ahn, Masters Candidate in MBA

The Knowledge Sharing-Hiding Dilemma: A Continuum of Choices and Feedback and Learning Orientation: Implications for Creativity

MBAA International Business Conference | Chicago, Illinois

Melody Wollan, Ph.D., Professor of Management & Mark Bayer, Ph.D., Assistant Professor of Business, Faculty Mentors

Williams Travel Grant

Esther Afrakoma Appiah Dwaah, Masters Candidate in Political Science

"A Rush of Blood": Comparing Blood Delivery Policies in the Fight to Decrease Maternal Deaths around the World

Midwest Political Science Association Annual Conference | Chicago, Illinois

Erin Rowland, MPPA, ABD, Instructor of Political Science, Faculty Mentor



Williams Travel Grant

Maria Baldwin, Masters Candidate in Communication Studies

A Comparative Feminist Exploration of The Bachelorette

Association for Education in Journalism and Mass Communication | San Francisco, California

Scott Walus, Ph.D., Associate Professor of Communication Studies, Faculty Mentor

Williams Travel Grant

Yasmine Ben Miloud, Masters Candidate in Sustainable Energy

Transactive Energy for Energy Access and

Analysis of Sustainable Community Development: A Case Study of a College Town

Association of Technology Management and Applied Engineering | Charlotte, North Carolina

Ann and Jack Graves Foundation Conference | Dallas, Texas

Nichole Hugo, Ph.D., Assistant Professor of Hospitality and Tourism &

Peter Liu, Ph.D., Professor of Technology, Faculty Mentors



Williams Travel Grant

Stephanie Blessman, Masters Candidate in School Counseling

Sand Tray Therapy in a School Setting

Illinois Association for Play Therapy Conference | Oak Park, Illinois

Angela Yoder, Ph.D., Associate Professor of Counseling and Higher Ed, Faculty Mentor

Williams Travel Grant

Samantha Boomgarden, Masters Candidate in Clinical Psychology
A Novel Gender Scale: The Boomgarden Gender Affinity Scale
Midwest Psychological Association | Chicago, Illinois
Caridad Brito, Ph.D., Professor of Psychology, Faculty Mentor



Williams Travel Grant

Cloe Bourdages, Masters Candidate in College Student Affairs
Navigating the Graduate School Search
Student Affairs 101 | Macomb, Illinois
Dianne Timm, Ph.D., Associate Professor of Counseling and Higher Ed, Faculty Mentor



Williams Travel Grant

Katelyn Bright, Masters Candidate in School Counseling
Play Therapy with Children Who Self Harm
Illinois Association for Play Therapy Conference | Oak Park, Illinois
Angela Yoder, Ph.D., Associate Professor of Counseling and Higher Ed, Faculty Mentor



Williams Travel Grant

Carol Bruce-Tagoe, Masters Candidate in MBA
Does the 2007-2009 Financial Crisis Affect the Linkages between National Stock Markets? Evidence from Developed and Emerging-market Countries
Academy of Finance 2020 Conference (MBAA International Program) | Chicago, Illinois
Ingyu Chiou, Ph.D., Associate Professor of Finance, Faculty Mentor



Williams Travel Grant

Viet Bui, Masters Candidate in Chemistry
Xylan Metabolism by Caulobacter Crescentus
American Society for Cell Biology Meeting 2019 | Washington, DC
Gopal Periyannan, Ph.D., Professor of Biochemistry, Faculty Mentor



Williams Travel Grant

Alexandria Cardot, Masters Candidate in School Psychology
Directly Assessing the Five Critical Features of Effective Classroom Management
Illinois School Psychologist Association | Springfield, Illinois
Margaret Floress, Ph.D., Associate Professor of Psychology, Faculty Mentor



Williams Travel Grant

Jessica Derham, Masters Candidate in Biological Sciences
Determination of the Function of Glutamate Carboxypeptidase II Paralogs in Folate Metabolism using Caenorhabditis Elegans
American Society for Cell Biology (ASCB/EMBO) Conference | San Diego, California
Gopal Periyannan, Ph.D., Professor of Biochemistry & Britto Nathan, Ph.D., Professor of Biological Sciences, Faculty Mentors





Williams Travel Grant

Geethmi Dissanayake, Masters Candidate in Technology
A Study on Real-Time Database Technology and its Applications
Association of Technology Management and Applied Engineering | Charlotte, North Carolina
Peter Liu, Ph.D., Professor of Technology, Faculty Mentor

Williams Travel Grant

Emily Donar, Masters Candidate in Clinical Psychology
Young Adults' Perception of Elder Adults
Midwest Psychological Association | Chicago, Illinois
Caridad Brito, Ph.D., Professor of Psychology, Faculty Mentor



Williams Travel Grant

Obinna Franklin Ezeibekwe, Masters Candidate in Economics
Financial Development and Economic Growth in the Presence of Simultaneity Bias: Panel Data Evidence
Missouri Valley Economic Association | Kansas City, Missouri
Mukti Upadhyay, Ph.D., Professor of Economics, Faculty Mentor

Williams Travel Grant

Josey Fioretto, Masters Candidate in School Counseling
How a School-Wide Peer Mentoring Program is Building Student Visionaries
Illinois School Counselor Association | Tinley Park, Illinois
Heidi Larson, Ph.D., Professor of Counseling and Higher Ed, Faculty Mentor



Williams Travel Grant

Bryan Foster, Masters Candidate in Biological Sciences
Effects of Chemical Composition on Plant Performance and Associated Insect Communities across Solidago Canadensis Clones
Ecological Society of America | Louisville, Kentucky
Scott Meiners, Ph.D., Professor of Biological Sciences, Faculty Mentor

Williams Travel Grant

Reuben Frey, Masters Candidate in Biological Sciences
Micropterus Species Abundances in Relation to Low-Head Dams in a Midwestern River System
Midwest Fish and Wildlife Conference | Springfield, Illinois
Robert Colombo, Ph.D., Professor of Biological Sciences, Faculty Mentor



Williams Travel Grant

Nicole Gaudiano, Masters Candidate in Communication Disorders & Sciences
Tongue-Tie and Speech Articulation
Illinois Speech-Language Hearing Association | Rosemont, Illinois
Ann Dralle and Beth Bergstrom, M.S., CCC-SLP, Instructors,
Rebecca Throneburg, Ph.D., Professor of Communication Disorders and Sciences, Faculty Mentors

Williams Travel Grant

Anna Goldberg, Masters Candidate in College Student Affairs
How a Group of Graduate Students is Revitalizing the Counseling Profession
Student Affairs 101 | Macomb, Illinois

Dianne Timm, Ph.D., Associate Professor of Counseling and Higher Ed, Faculty Mentor



Williams Travel Grant

Godwin Gyimah, Masters Candidate in History
Alexander in Retrospect: An Evolution of Alexander the Great's Policies in Persia and Revisiting the Women Factor in China's Economy During the Interwar Years
Loyola History Graduate Students Association Conference | Chicago, Illinois
Women's and Gender History Symposium | Urbana, Illinois
Lee Patterson, Ph.D., Professor of History, Faculty Mentor
Jinhee Lee, Ph.D., Associate Professor of History, Faculty Mentor



Williams Travel Grant

Brendan Haile, Masters Candidate in Biological Sciences
Context Dependency between Stochastic and Deterministic Drivers in Old Field Succession
Ecological Society of America | Louisville, Kentucky

Scott Meiners, Ph.D., Professor of Biological Sciences, Faculty Mentor



Williams Travel Grant

Kaylee Hampton, Masters Candidate in School Psychology
Directly Assessing the Five Critical Features of Effective Classroom Management
Illinois School Psychologist Association | Springfield, Illinois
Margaret Floress, Ph.D., Associate Professor of Psychology, Faculty Mentor



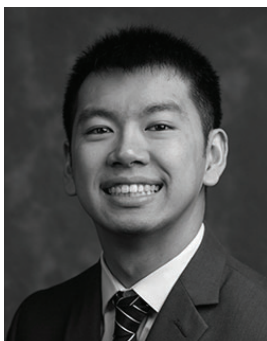
Williams Travel Grant

Tessa Hanlon, Masters Candidate in Clinical Mental Health Counseling
How a School-wide Peer Mentoring Program is Building Student Visionaries
Illinois School Counselor Association | Tinley Park, Illinois
Heidi Larson, Ph.D., Professor of Counseling and Higher Ed, Faculty Mentor



Williams Travel Grant

Alexander Harn, Masters Candidate in School Counseling
How a School-Wide Peer Mentoring Program is Building Student Visionaries and Sand Tray Therapy in a School Setting
Illinois School Counselor Association | Tinley Park, Illinois
Illinois Association for Play Therapy Conference | Oak Park, Illinois
Heidi Larson, Ph.D., Professor & Angela Yoder, Ph.D., Associate Professor of Counseling and Higher Ed, Faculty Mentors



Williams Travel Grant

Md Nurul Islam, Masters Candidate in MBA
The Impact of Board Composition and Activity on Non-Performing Loans
Academy of Finance at the MBAA International Conference | Chicago, Illinois
Trang Doan, Ph.D., Assistant Professor of Finance, Faculty Mentor





Williams Travel Grant

Christine Kariuki, Masters Candidate in Sustainable Energy
*Economic and Policy Opportunities in Sustainable Energy to Address
Energy Challenges in Sub-Saharan Africa*

Association of Technology Management and Applied Engineering | Charlotte, North Carolina
Jerry Cloward, Ph.D., Associate Professor of Technology, Faculty Mentor

Williams Travel Grant

Domminique Kinnie, Masters Candidate in Clinical Mental Health Counseling
Filial Therapy: Empowering Parents

Illinois Association for Play Therapy Conference | Oak Park, Illinois
Angela Yoder, Ph.D., Associate Professor of Counseling and Higher Ed, Faculty Mentor



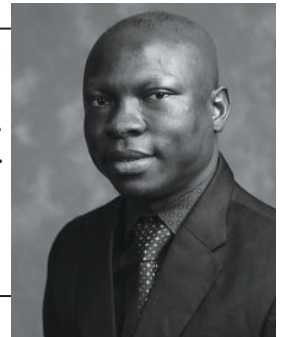
Williams Travel Grant

Emilee Kruchten, Masters Candidate in Clinical Psychology
Social Anxiety, Fear of Evaluation, FoMO, and Instagram

Midwest Psychological Association | Chicago, Illinois
Wesley Allan, Ph.D., Associate Professor of Psychology, Faculty Mentor

Williams Travel Grant

Derick Isaac Lamptey, Masters Candidate in Biological Sciences
*Evaluating Seasonal Variation in Mitochondrial Bioenergetics and Physiological Performance of the
Bluegill Sunfish, Lepomis Macrochirus from a Shallow Midwest River*
Illinois State Academy of Sciences Annual Meeting | Jacksonville, Illinois
Eloy Martinez, Ph.D., Assistant Professor of Biological Sciences, Faculty Mentor



Williams Travel Grant

Latevi Lawson Body, Masters Candidate in Political Science
An Assessment of Female Representation in International Institutions

Illinois Political Science Association Annual Conference | Glen Ellyn, Illinois
Ryan Burge, Ph.D., Assistant Professor of Political Science, Faculty Mentor

Williams Travel Grant

Paige Lindauer, Masters Candidate in Communication Disorders and Sciences
*Effects of Parental Involvement in Therapy for Improving Basic AAC Requesting Skills in a Child
with Angelman Syndrome*

Illinois Speech-Language Hearing Association | Rosemont, Illinois
Jacki Tish, M.S., Instructor, & Rebecca Throneburg, Ph.D., Professor of
Communication Disorders and Sciences, Faculty Mentors



Williams Travel Grant

Heather Lindenberg, Masters Candidate in Communication Disorders and Sciences
Pausing vs. Cancellation for Disfluencies in a Child with ASD

Illinois Speech-Language Hearing Association | Rosemont, Illinois
Beth Bergstrom, M.S., Instructor, & Rebecca Throneburg, Ph.D., Professor of Communication
Disorders and Sciences, Faculty Mentors

Williams Travel Grant

Shirley Mensah, Masters Candidate in Geographic Information Sciences
Cenozoic Hydroclimate and Ecosystem Evolution in the John Day Region, Oregon, USA
American Geophysical Union Fall Meeting 2019 | San Francisco, California
David Viertel, Ph.D., Associate Professor of Geography, Faculty Mentor



Williams Travel Grant

Douglas Michaels, Masters Candidate in College Student Affairs
Female Student Veterans' Transition to College
NASPA Symposium on Military Connected Students | Seattle, Washington
Dianne Timm, Ph.D., Associate Professor of College Student Affairs, Faculty Mentor



Williams Travel Grant

Tyler Murray, Masters Candidate in Biological Sciences
Assessment of Catfish Population Dynamics in Illinois Lakes and Waterways
Midwest Fish & Wildlife Conference | Springfield, Illinois
Eden Effert-Fanta, Ph.D., Instructor of Biological Sciences, Faculty Mentor



Williams Travel Grant

Brittany Phelps, Masters Candidate in School Counseling
Sand Tray Therapy in a School Setting
Illinois Association for Play Therapy Conference | Oak Park, Illinois
Angela Yoder, Ph.D., Associate Professor of Counseling and Higher Ed, Faculty Mentor



Williams Travel Grant

Manjil Puri, Masters Candidate in Sustainable Energy
Optimum Share of Regenerative and Mechanical Braking in a Solar Powered Electric Go-Kart at Slower Speeds
Association of Technology Management and Applied Engineering | Charlotte, North Carolina
Peter Liu, Ph.D., Professor of Technology, Faculty Mentor



Williams Travel Grant

Dakota Radford, Masters Candidate in Biological Sciences
Utility of Otoliths, Scales, Fine Rays, and Opercles in Estimating the Age Structure of a Population of Blue Suckers and Relative Precision of Hard Structures for Estimating Blue Sucker Ages and Demographics
American Fisheries Society Annual Meeting | Reno, Nevada
Midwest Fish & Wildlife Conference | Springfield, Illinois
Robert Colombo, Ph.D., Professor of Biological Sciences, Faculty Mentor



Williams Travel Grant

Kyle Rempe, Masters Candidate in Biological Sciences
Differences in Growth and Bioenergetics for White Crappie and Bluegill in a Midwest Power Plant Lake
Midwest Fish & Wildlife Conference | Springfield, Illinois
Eloy Martinez, Ph.D., Assistant Professor of Biological Sciences, Faculty Mentor





Williams Travel Grant

Hannah Smothers, Masters Candidate in Political Science

The Effect of Defunding Planned Parenthood on the Cost of Medicaid and The Effect of Religiosity on Abortion Rates in Modern Eastern Europe

Illinois Political Science Association Annual Conference | Glen Ellyn, Illinois

Midwest Political Science Association Annual Conference | Chicago, Illinois

Melinda Mueller, Ph.D., Professor, & Paul Danyi, Ph.D., Instructor of Political Science, Faculty Mentors

Williams Travel Grant

Toluwalase Solomon, Masters Candidate in Curriculum and Instruction

The Juxtaposition of Social Studies Curricula in Nigeria and the United States and

Recognizing and Rectifying the Misrepresentation within Consequential Women History-Based Curricula

ICSS Fall Conference Building Bridges to Social Studies | Palatine, Illinois

History-Social Sciences Teacher Symposium | Springfield, Illinois

John Bickford, Associate Professor of Curriculum and Instruction, Faculty Mentor



Williams Travel Grant

Zoe Staves, Masters Candidate in Communication Disorders and Sciences

Effects of Parental Involvement in Therapy for Improving Basic AAC Requesting Skills in a Child with Angelman Syndrome

Illinois Speech-Language Hearing Association | Rosemont, Illinois

Jacki Tish, M.S., Instructor, & Rebecca Throneburg, Ph.D., Professor of

Communication Disorders and Sciences, Faculty Mentors



Williams Travel Grant

Chloe St. Pierre, Masters Candidate in Clinical Mental Health Counseling

The Benefits of Play Therapy when Treating Eating Disorders

Illinois Association for Play Therapy Conference | Oak Park, Illinois

Angela Yoder, Ph.D., Associate Professor of Counseling and Higher Ed, Faculty Mentor



Williams Travel Grant

Aileen Tierney, Masters Candidate in School Counseling

How a School-Wide Peer Mentoring Program is Building Student Visionaries

Illinois School Counselor Association | Tinley Park, Illinois

Heidi Larson, Ph.D., Professor of Counseling and Higher Ed, Faculty Mentor

Williams Travel Grant

Will Weckhorst, Masters Candidate in School Counseling

How a School-Wide Peer Mentoring Program is Building Student Visionaries

Illinois School Counselor Association | Tinley Park, Illinois

Heidi Larson, Ph.D., Professor of Counseling and Higher Ed, Faculty Mentor



Williams Travel Grant

Rebecca Weil, Masters Candidate in Communication Disorders and Sciences

Non- Words vs. Real Words in Phonological Intervention

Illinois Speech-Language Hearing Association | Rosemont, Illinois

Rebecca Throneburg, Ph.D., Professor of Communication Disorders and Sciences, Faculty Mentor

Williams Travel Grant

Jessica White, Masters Candidate in School Psychology
Assessing Pre-Service, Early Educators' Use and Knowledge of Effective Praise
Illinois School Psychologist Association | Springfield, Illinois
Margaret Floress, Ph.D., Associate Professor of Psychology, Faculty Mentor



Williams Travel Grant

Emily Wiedeman, Masters Candidate in Communication Studies
A Comparative Feminist Exploration of the Bachelorette
Association for Education in Journalism and Mass Communication | San Francisco, California
Scott Walus, Ph.D., Associate Professor of Communication Studies, Faculty Mentor



Williams Travel Grant

Ashlyn Wingate, Masters Candidate in School Psychology
Assessing Pre-Service, Early Educators' Use and Knowledge of Effective Praise
Illinois School Psychologist Association | Springfield, Illinois
Margaret Floress, Ph.D., Associate Professor of Psychology, Faculty Mentor



Williams Travel Grant

David Yff, Masters Candidate in Biological Sciences
Biotic and Abiotic Drivers of Larval Asian Carp in Illinois and Wabash River Tributaries
Midwest Fish & Wildlife Conference | Springfield, Illinois
Eden L. Effert-Fanta, Ph.D., Instructor of Biology, Faculty Mentor



2020 Rodney S. Ranes Outstanding Graduate Faculty Mentor Award

Established by Rodney S. Ranes, former director of graduate admissions, this award is selected by the Council on Graduate Studies Ranes Board to recognize outstanding graduate faculty mentoring.

Gopal Periyannan, Ph.D., Professor and Graduate Coordinator, Biochemistry



2020 Graduate School Leadership Award

The Graduate School Leadership Award recognizes outstanding contributions to graduate education. Dr. Hugo is being recognized for her role in developing the new graduate program in Sustainability and working with the Illinois Innovation Network to deliver an online course in sustainability.

Nichole Hugo, Ph.D., Assistant Professor of Hospitality and Tourism and Graduate Coordinator, Sustainability



2020 Graduate School Award of Excellence

In recognition of valuable contributions to graduate education by developing and implementing the online graduate thesis deposit process.

Zachary Newell, Dean

Todd Bruns, Associate Professor

Ellen Corrigan, Associate Professor

Scholarships



2020 Betty Wright Downing Graduate Scholar

Established by Mr. and Mrs. Harry T. Wright in memory of Betty Wright Downing.

Derick Isaac Lamptey, Masters Candidate in Biological Sciences



2020 Annie Weller Graduate Scholar

Established by the family of Annie L. Weller to provide financial support for a full-time undergraduate or graduate student majoring in the social sciences, history, or physical sciences.

Obinna Franklin Ezeibekwe, Masters Candidate in Economics



2020 Frances Meyer Hampton Graduate Scholar

Established by Mrs. Frances Meyer Hampton in her estate, this award is presented annually to a full-time student in a master's degree program.

Esther Afrakoma Appiah Dwaah, Masters Candidate in Political Science



2020 Mary Bear McClay Graduate Scholar

A graduate assistantship established in 2004 by siblings Wilfred (Bill) McClay and Susan Foote, in memory of their mother, Mary Bear McClay.

Caleb Will, Masters Candidate in Mathematics Education



2020 UPI Scholar

Established by Dr. John Allison, President of the

EIU University Professionals of Illinois in 2012 to provide financial support for a full-time graduate student accepted into any degree program at EIU.

Obinna Franklin Ezeibekwe, Masters Candidate in Economics

2020 GSAC Scholar in the College of Education

Established by the Graduate Student Advisory Council to recognize exceptional service and scholarship by a graduate student in each of the four academic colleges.

Jenny Reid, Masters Candidate in Curriculum and Instruction



2020 GSAC Scholar in the Lumpkin College of Business and Technology

Established by the Graduate Student Advisory Council to recognize exceptional service and scholarship by a graduate student in each of the four academic colleges.

Manjil Puri, Masters Candidate in Sustainable Energy





2020 GSAC Scholar in the College of Health and Human Services

Established by the Graduate Student Advisory Council to recognize exceptional service and scholarship by a graduate student in each of the four academic colleges.

Emily Pope, Masters Candidate in Nutrition and Dietetics

2020 GSAC Scholar in the College of Liberal Arts and Sciences

Established by the Graduate Student Advisory Council to recognize exceptional service and scholarship by a graduate student in each of the four academic colleges.

Obinna Franklin Ezeibekwe, Masters Candidate in Economics



2020 Graduate Alumni Fund Scholars

Established by the Graduate Alumni Advisory Board to recognize outstanding graduate research, creative activity, and scholarship.



Md Nurul Islam, Masters Candidate in MBA

The Impact of Board Composition and Activity on Non-Performing Loans

Trang Doan, Ph.D., Assistant Professor of Finance,
and Candra Chahyadi, Associate Professor of Finance, Faculty Mentors

Dakota Radford, Masters Candidate in Biological Sciences

Blue Sucker Populations Demographics in an Un-Impounded River

Robert Colombo, Ph.D., Professor of Biological Sciences, Faculty Mentor



Norm and Maria Plummer Outstanding Research Awards

Established by graduate alumnus, Norm Plummer, '71, '72, and his wife Maria, to recognize outstanding research projects.

Christine Kariuki, Masters Candidate in Sustainable Energy

Sustainability Initiatives Tracking and Reporting at Eastern Illinois University

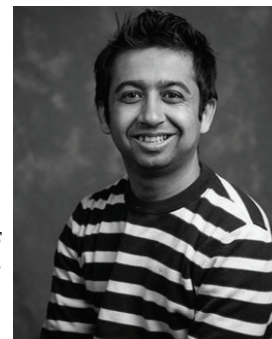
Nichole Hugo, Ph.D., Assistant Professor of
Hospitality and Tourism, Faculty Mentor



Manjil Puri, Masters Candidate in Sustainable Energy

Design of Regenerative Braking System for a Solar Powered Electric Go Kart at Slower Speeds

Nichole Hugo, Ph.D., Assistant Professor of Hospitality and Tourism, Faculty Mentor



Hamand Society of Graduate Scholars

Named in honor of the first dean of The Graduate School, Dr. Lavern Hamand, the Hamand Society recognizes degree-seeking graduate candidates nominated from among the class of Distinguished Graduate Students whose achievements in both scholarship and service have had a documented impact on the discipline and the community. The quality and impact of the scholarship and service achievements of Hamand Society Scholars reflect the highest ideals of the engaged graduate student.

Dean Hamand was a professor of history and served as dean from 1967 to 1974. Before her passing in 2011, his widow Martha provided support for the Society, which was created in 2010. Daughters, Carol Stephens and Wendy Venet, continue their parent's legacy in supporting graduate education at EIU.



2020 Hamand Scholar

Nathan Crews, Masters Candidate in English

A former youth minister, Nathan Crews brings his experience and skills as a mentor to his graduate assistantship in the English department's Writing Center, where he counsels undergraduate and graduate students in effective composition. Nathan has served as an ambassador for the Center by speaking to many groups on campus, including international students and newly-admitted undergraduate students. When EIU's graduate program in Technology requested partnering with the English department to deliver content in a course, Nathan led the effort to prepare content, covering topics from plagiarism to revision and editing to APA. His strengths as a writer and researcher are evident in his thesis subject, the cultural biography of Lowney Turner Handy and her founding of the Handy Writer's Colony in Nathan's hometown of Marshall, IL. This research resulted in a presentation at the Allerton English Articulation Conference and the department's English Studies Conference. His thesis adviser, Dr. Jad Smith, writes, "By conducting research at the Norris L. Brookens Library at the University of Illinois-Springfield, which houses the archives of the Colony, Nathan intends to examine how Handy's biography and the quirky culture of the Colony intersected, and sometimes clashed, with the local culture of Marshall and Midwestern values at large. Nathan's novel approach to Handy's life and the Colony promises to produce a study of both regional interest and of scholarly value." Nathan's service to the department includes serving as president of the English Graduate Student Organization and as a student representative on the Graduate Studies Committee. Active in his community, he serves as a District Board Trustee for the Marshall Public Library, in which capacity he has contributed to development projects and oversight of the library, helping to ensure its continued success as an educational resource for the community. Nathan is also a member of the Marshall Historical Commission, an organization focused on preserving local landmarks and promoting tourism in the area. Additionally, Nathan has been an active member of EIU's Rural Schools Initiative. One of Nathan's faculty mentors, Dr. Melissa Ames, writes, "It is worth noting that Nathan is a passionate advocate for rural education (as demonstrated by his active engagement with EIU's Rural Schools Pipeline Program) and has already made plans to return to teach in his hometown. He is a terrific role model, a gifted teacher, and an inquisitive scholar."



2020 Hamand Scholar

Tessa Hanlon, Masters Candidate in School Counseling

Tessa Hanlon's strong writing skills, clinical skills, and research interests led the Department of Counseling and Higher Education to nominate her for a Presidential Graduate Assistantship, which she was selected to receive. Her research in play therapy resulted in a co-authored manuscript, *Helping Teachers Experience and Utilize the Power of Play*, which has been submitted for publication in a peer-reviewed, internationally-circulated publication. She has presented her research at state and institutional-level conferences and has been awarded two grants. Tessa serves as the Student Dean for the Graduate School, secretary for Chi Sigma Iota, and as a mentor for undergraduates with the TRiO and GN4U programs. One of Tessa's faculty mentors, Dr. Angela Yoder, writes, "she is a phenomenal instructor for EIU" teaching an educational psychology course where she received extremely high rankings from her students. Chosen as a school counseling intern at Mattoon High School, Tessa provides counseling for families and students and serves on the grief team. Dr. Catherine Polydore writes that Tessa exhibits "an openness to learning, intellectual acuity, and an overall positive and empathetic nature." At EIU she received the Paul Ward Scholarship, Williams Travel Grant, Student Impact Grant, and the College of Education Telefund Award. Tessa will begin doctoral studies at the University of North Texas where she will assist with their Center for Play Therapy, an internationally recognized hub for research and information in the field of play therapy.

2020 Hamand Scholar

Douglas Michaels, Masters Candidate in College Student Affairs

Doug Michaels's extraordinary work ethic led him to successfully carry out his myriad duties as a graduate assistant for the New Student Programs Office and also complete and defend his thesis in record time. Doug's research on the female student veteran experience of transitioning to college required him to work with students at institutions around the country, a task that took additional time and energy and a great deal of effort to complete. He was accepted to present his research at the National Association of Student Personnel Administrators Symposium on Student Veteran and Military Connected Students in Seattle, Washington. The American College Personnel Association – International conference also invited him to present. Doug and his mentors are working to develop a publishable paper from his research and plan to submit to a nationally recognized journal. Doug's service to both the university and his community include president of the College Student Personnel Association, volunteering at the local animal shelter, preparing meals for community agencies, and helping with the One-Stop Community Christmas efforts.

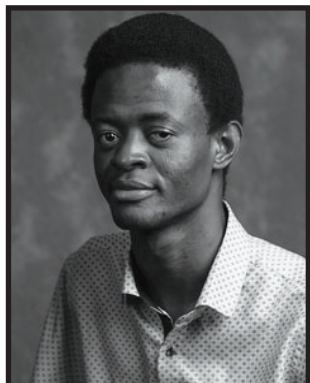


2020 Hamand Scholar

Amanda Newmes, Masters Candidate in Curriculum and Instruction

A 2019 Golden Apple recipient and five-time ACES Award winner, Amanda Newmes teaches science at Belvidere North High School. Amanda's thesis project garnered funding from a College of Educational Development Grant and also support from her school district. Her research titled, *The Effectiveness of Personalized Competency-Based Education on Student Engagement at the Secondary Level*, won a Graduate School Master's Thesis Award of Excellence for her college and has been submitted to the International Academic Forum Journal of Education. The Children Research Network in Japan has expressed interest in her study and its findings. Amanda worked closely with her district's Innovation Team to develop Health Career Pathways and Endorsements and has been actively involved with training for teachers with KIDS, offering workshops for educators interested in adopting blended learning. She attended the National Blended Conference Rhode Island with the superintendents and administrators of District #100 in 2019. Amanda serves as adviser to the Green Club, an environmental-awareness group, and also to the Health Careers Club. Her thesis adviser, Sham'ah Md-Yunus writes that Amanda "embodies the qualities of an exceptional scholar who will continue to make a huge impact in education."

Class of 2020 Distinguished Graduate Students



Precious Allor
Economics



Lisa Ayers
Educational Leadership
(MSED)



Yasmine Ben Miloud
Sustainable Energy



Jordyn Blood
Kinesiology and Sports Studies



Heidi Boyd
Human Services
Program Administration



Cheyenne Brickner
Music



Kam Browning
Communication Disorders
and Sciences



Shannon Burback
School Psychology



Matthew Calcagno
Cybersecurity

Class of 2020 Distinguished Graduate Students



Alexander Cardona
Political Science (Online)



Mikeala Carssow
Nutrition and Dietetics



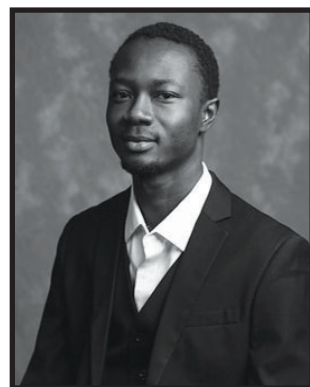
Nathan Crews
English



Ryan Fritch
Educational Leadership
(Specialist)



Astoria Griggs-Burns
Health Promotion and Leadership



Godwin Gyimah
History



Tessa Hanlon
School Counseling



Ronald Hoagland
Mathematics



Christa Kabbes
Clinical Mental Health Counseling

Class of 2020 Distinguished Graduate Students



Shalini Kadinappulige
Chemistry



Colleen Kawaters
Art Education



Afet Kiyak
Business Administration
(Off-campus)



Anudeep Kotte
Technology (On-campus)



Nathaniel Lackey
Math Education



Kaitlyn Lacy
Special Education



Glover Marfo
Art



Jocelyne Mendoza
Biochemistry/Biotechnology



Douglas Michaels
College Student Affairs

Class of 2020 Distinguished Graduate Students



Caitlin Mrowiec
Biological Sciences (Thesis Option)



Matthew Mullins
Technology (off-campus)



Agenda Nawa
Geographic Information Sciences



Amanda Newmes
Curriculum and Instruction



Madison Palmer
Aging Studies



Sydney Rohmann
Clinical Psychology



Sara Schmidt
Talent Development



MacKenzie Scroggins
Biological Sciences
(Non-thesis Option)



Jaclyn Shan
Business Administration (On-campus)

Class of 2020 Distinguished Graduate Students



Hannah Smothers
Political Science



Missy Stone
Communication Studies

Not Pictured:
Jacqueline Thomas,
Community Arts

2020 Commencement Speakers

To promote EIU's commitment to strengthening the academic and personal experience for our students and to showcase examples of exemplary writing and speaking, Eastern Illinois University introduced the Student Commencement Speaker Series in 2013 replacing the former student and faculty speaker traditions at Eastern. The student speakers representing the Graduate School were selected on the basis of a submitted competitive essay and featured during the Fall 2019 ceremony on Saturday, December 14, 2019.



Jalisha Smith
Human Services Program Administration
Featured Speaker



Kim Redfern
Aging Studies
Alternate Speaker

2020 Graduate Student Advisory Council
Executive Board



Josey Fioretto
President



Tessa Hanlon
Student Dean



Hannah Smothers
Vice President for Programming



Godwin Gyimah
Vice President for
Administrative Activities



Missy Stone
Vice President for
Public Relations



Derick Isaac Lamptey
Vice President for Member
Recruitment and Retention



Allison Sprengel
Graduate School Student Adviser

2019-2020 Council on Graduate Studies

Angela Jacobs, Ph.D., Chair
Lee Patterson, Ph.D., Vice Chair
Melissa Jones-Bromenshenkel, Ph.D.
Des Adom, Ph.D.
Peter Ping Liu, Ph.D.
Nikki Hillier, Ph.D.
Richard Roberts, Ph.D.
Yasmine Ben Miloud, Student Representative

2019-2020 Graduate Student Advisory Council

Josey Fioretto, President
Missy Stone, Vice President for Public Relations
Godwin Gyimah, Vice President for Administrative Activities
Hannah Smothers, Vice President for Programming
Derick Lamptey, Vice President for Member Recruitment and Retention
Tessa Hanlon, Student Dean
Ally Sprengel, Graduate School Student Adviser
Lori Henderson, Staff Adviser
Dianne Timm, Ph.D., Faculty Adviser

College of Liberal Arts and Sciences Graduate Programs

Ann Coddington, M.F.A.- Art, Coordinator
Patricia Belleville, Ph.D.- Art Education and Community Arts, Coordinator
Britto Nathan, Ph.D.- Biological Sciences, Coordinator
Tom Canam, Ph.D.- Biochemistry/Biotechnology, Coordinator
Gopal Periyannan, Ph.D.- Chemistry, Coordinator
Wesley Allan, Ph.D.- Clinical Psychology, Coordinator
Angela Jacobs, Ph.D.- Communication Studies, Coordinator
Ahmed Abou-Zaid, Ph.D.- Economics, Coordinator
Melissa Ames, Ph.D.- English, Coordinator
Lee Patterson, Ph.D.- History, Coordinator
David Viertel, Ph.D.- Geographic Information Sciences, Coordinator
Bogdan Petrenko, Ph.D.- Mathematics, Coordinator
Jamie Ryan, M.M.- Music, Coordinator
Peter Wiles, Ph.D.- Mathematics Education Option, Coordinator
Ryan Burge, Ph.D.- Political Science, Coordinator
Margaret Floress, Ph.D.- School Psychology, Coordinator

Graduate School Alumni Advisory Board

Jim Acklin, '79, '87, '98
Matt Davidson, '82, '84
Craig Gatto, Ph.D., '87, '89
Marilyn Holt, '88, '94
Mark Kasper, Ed.D., '83, '86
Nancie King Mertz, '77
Linda Komes, '74
Kendra McClure, '10
David VanVooren, '78 '79

The Graduate School

Ryan C. Hendrickson, Ph.D., Dean
Lana Beasley, Administrative Aide
Lori Henderson, Publicity/Promotions Specialist
Tracey Hutchison, Admissions/Records Officer
Cathy Gordon, Office Manager

College of Education Graduate Programs

Nick Osborne, Ph.D.- Educational Leadership, Master's & Specialist's Programs, Coordinator
Richard Roberts, Ph.D.- Counseling and Higher Ed Programs, Chair and Coordinator
John Bickford III, Ph.D.- Curriculum and Instruction, Coordinator
Melissa Jones-Bromenshenkel, Ph.D.- Special Education, Coordinator

College of Health and Human Services Graduate Programs

Kathleen O'Rourke, Ph.D.- Aging Studies, Coordinator
Nichole Mulvey, Ph.D.- Communication Disorders & Sciences, Coordinator
Frances Murphy, Ph.D.- Human Services Program Administration, Coordinator
Sheila Simons, Ph.D.- Health Promotion and Leadership, Coordinator
Andrew Kerins, Ph.D.- Exercise Physiology, Sports Administration, Coordinator
Melanie Burns, Ph.D.- Nutrition and Dietetics, Coordinator

Lumpkin College of Business and Technology Graduate Programs

David Boggs, Ph.D.- Business Administration, Coordinator
Rigoberto Chinchilla, Ph.D.- Cybersecurity, Coordinator
Nichole Hugo, Ph.D.- Sustainability, Coordinator
David Melton, Ph.D.- Technology, Coordinator



The Graduate School
600 Lincoln Avenue
Charleston, Illinois 61920
217.581.2220
www.eiu.edu/graduate