

MASKING REQUIREMENTS

PHASE 5 GUIDELINES - UPDATED JUNE 15, 2021

FULLY VACCINATED INDIVIDUALS ON CAMPUS

Face masks and six-foot social distancing will no longer be required anywhere outdoors or indoors except for a few specific locations where face masking and six-foot social distancing will remain in force, which includes all classrooms, the Student Health Center, the Shield Covid-testing site on Court 5 of the Student Recreation Center, and on the Panther Shuttle.



INDIVIDUALS NOT FULLY VACCINATED ON CAMPUS



Face masks are not required when outside if six-foot social distancing can be maintained. Indoors, facial masking and six-foot social distancing are required at all times in all areas inside university buildings and structures. The only exceptions to this policy where masks can be removed are in personal offices when no one else is present or when eating/drinking.

Non-vaccinated students and employees should always have face masks readily available in case someone enters their personal office space or six-foot social distancing cannot be maintained with others.

OTHER GENERAL GUIDANCE

It is each individual's responsibility to completely follow the facial masking and social distancing policies for fully vaccinated individuals and those who are not. The honor system will be used at this time and we trust that all of our employees, students, and community guests will be truthful in compliance for the safety and health of us all.

PROTECT OUR PANTHERS



MASKING REQUIREMENTS

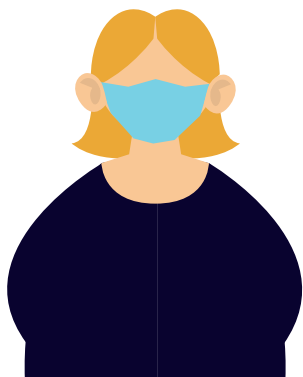
PHASE 5 GUIDELINES - UPDATED JUNE 15, 2021

FULLY VACCINATED INDIVIDUALS ON CAMPUS

Face masks and six-foot social distancing will no longer be required anywhere outdoors or indoors except for a few specific locations where face masking and six-foot social distancing will remain in force, which includes all classrooms, the Student Health Center, the Shield Covid-testing site on Court 5 of the Student Recreation Center, and on the Panther Shuttle.



INDIVIDUALS NOT FULLY VACCINATED ON CAMPUS



Face masks are not required when outside if six-foot social distancing can be maintained. Indoors, facial masking and six-foot social distancing are required at all times in all areas inside university buildings and structures. The only exceptions to this policy where masks can be removed are in personal offices when no one else is present or when eating/drinking.

Non-vaccinated students and employees should always have face masks readily available in case someone enters their personal office space or six-foot social distancing cannot be maintained with others.

OTHER GENERAL GUIDANCE

It is each individual's responsibility to completely follow the facial masking and social distancing policies for fully vaccinated individuals and those who are not. The honor system will be used at this time and we trust that all of our employees, students, and community guests will be truthful in compliance for the safety and health of us all.

PROTECT OUR PANTHERS

