

CASL Executive Summary for the College of Education and Professional Studies' Graduate Programs AY11

Complete reports available for review at <http://www.eiu.edu/~assess/assessdata.php>

Department	Graduate Learning Goals Adopted ¹	Dept. Plans' Learning Objectives ²	Dept. Plans' Assessment Measures	Dept. Plans' Expectations	Dept. Plans' Results	Dept. Plans' Feedback Loop
Rating Scale	4 goals ³	Levels 1-3: 3 is most mature	Levels 1-3: 3 is most mature	Levels 1-3: 3 is most mature	Levels 1-3: 3 is most mature	Levels 1-3: 3 is most mature
Counseling & Student Development	K, CT, C, S	Level 3	Level 3	Level 3	Level 3	Level 3
Early Childhood, Elementary, and Middle Level Education	K, CT, C, S	Level 3	Level 3	Level 2	Level 3	Level 3
Educational Administration	K, CT, C, S	Level 3	Level 3	Level 3	Level 3	Level 3
Kinesiology & Sports Studies	K, CT, C, S	Level 2	Level 2	Level 2	Level 2	Level 2
Secondary Education & Foundations	K, CT, C, S	Level 3	Level 1-2	Level 1-2	Level 1-2	Level 2
Special Education	K, CT, C, S	Level 3	Level 3	Level 3	Level 3	Level 3
College Average	100% Knowledge 100% CT & PS 100% Communication 100% Scholarship	13% Level 2 88% Level 3	13% Level 1 13% Level 2 75% Level 3	13% Level 1 25% Level 2 63% Level 3	13% Level 1 13% Level 2 75% Level 3	25% Level 2 75% Level 3
University Average	100% Knowledge 93% CT & PS 100% Communication 100% Scholarship	14% Level 2 86% Level 3	4% Level 1 46% Level 2 50% Level 3	7% Level 1 39% Level 2 54% Level 3	4% Level 1 50% Level 2 46% Level 3	32% Level 2 68% Level 3

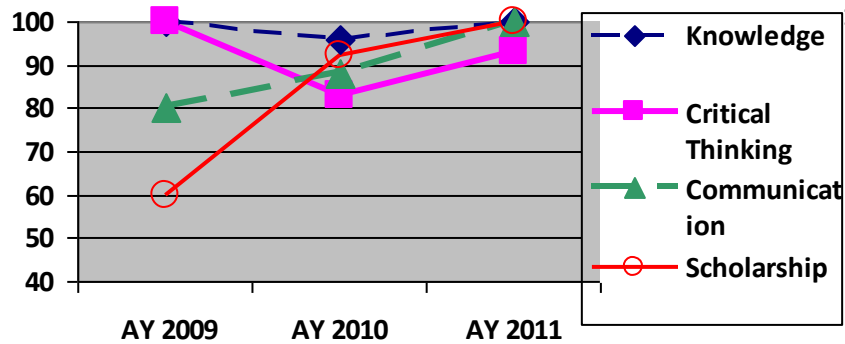
¹ The graduate learning goals include: a depth of content knowledge, critical thinking and problem solving, advanced scholarship through research or creative activity, and oral and written communication skills.

² Levels refer to all assessment plans in the department unless otherwise designated; levels refer to the primary trait analysis for departmental assessment and are taken from the most recently submitted plan if no plan was required for AY09.

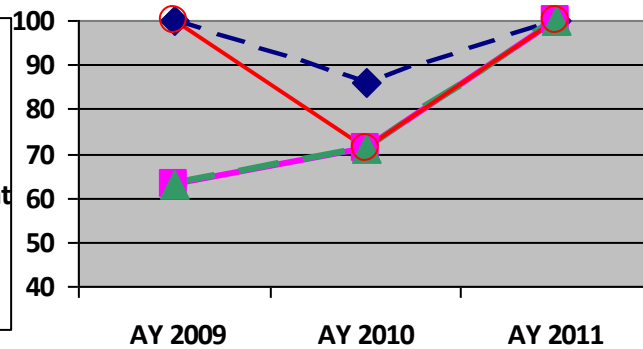
2009-2011 Graduate Programs in the College Education and Professional Studies' Trends

Complete reports available for review at <http://www.eiu.edu/~assess/assessdata.php>

Percentage of EIU Graduate Programs Adopting Graduate Learning Goals



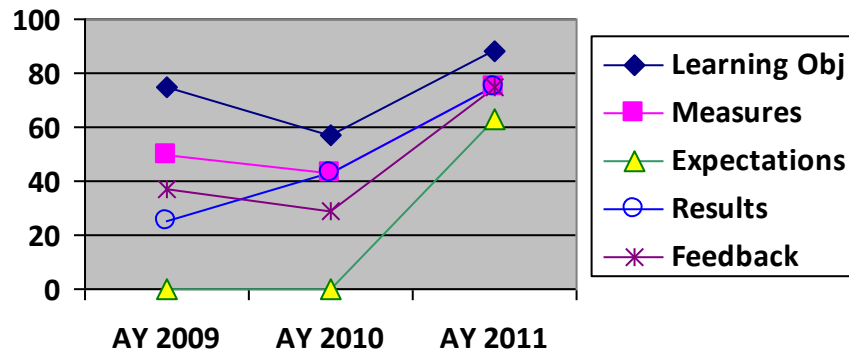
Percentage of CEPs Graduate Programs Adopting Graduate Learning Goals



Number of Graduate Learning Goals Adopted by CEPs Programs

	AY 2009	AY 2010	AY 2011
Counseling & Student Development	4	4	4
Early Childhood, Elementary, and Middle Level Education	4	4	4
Educational Administration	4	No report	4
Kinesiology & Sports Studies	2	4	4
Secondary Education & Foundations			4
Special Education	4	4	4

Percentage of Aspects of CEPs Graduate Program Assessment Plans Rated as 3 (Mature)



- Spring 2005- University graduate learning goals developed. Currently all CEPs graduate programs adopting all four graduate learning goals
- 2005 NCA visitors stated that the departmental assessment plans appear uneven in their collection and use of relevant data to support student learning. Self-study for 2015 NCA visit will begin in 2012
 - EIU Graduate Programs Summer 2006 - 48% were at level 3 with objectives, 24% with measures, 17% with expectations, 3% with results, 21% with the feedback loop
 - EIU Graduate Programs Summer 2011- 86% were at level 3 with objectives, 50% with measures, 54% with expectations, 46% with results, 68% with the feedback loop
- The majority of aspects for CEPs Program Assessment Plans were rated at a “2” or “3”. One program at the 1-2 level on several aspects. The number of aspects rated at “3” (Mature) has significantly increased across the past three years.
 - CEPs grad programs above university average for percentage at level 3 for objectives, measures, expectations, results and feedback

*Note: Levels may vary from year to year as programs revise their curricula and/or assessment plans. Changes in assessment plans take time to be fully implemented, thus a decline or steady number in the rating does not necessarily indicate a concern