



Leonard A. Anderson  
Executive Director

M. Seth Reines  
Artistic Director

**PRESENTS**



**JUNE 8-19, 2005**



Named a Partner in Excellence by the Illinois Arts Council.  
This program is partially supported by a grant from the Illinois Arts Council.



# PARTNERS IN SULLIVAN

**Kari Cataldo, M.D.**

*(right)*

*Board Eligible – the American  
Board of Family Practice*

**Shirley Martin, PA-C**

*(left)*

*Certified – National  
Commission on  
Certification of  
Physician Assistants*



SBL Sullivan Clinic  
7 Hawthorne Lane  
Sullivan, IL 61951  
[www.sarahbush.org](http://www.sarahbush.org)

**(217) 728-8441**



**SARAH BUSH  
LINCOLN**  
HEALTH SYSTEM



# Elzy's Flowers & Gifts



*... more than just flowers*

**One of the finest selections of Unique Giftware  
& Home Decor in East Central Illinois.**

Angels • Gift Baskets • Inspirational Giftware  
Figurines • Garden Decor • Gourmet Foods • Lamps  
Stained Glass • Jewelry • Body Lotions • Glassware  
Candles • Indoor Water Fountains • Italian Charms

*"For Those Not Content With The Ordinary"*



412 S. Hamilton St. on So. Rte. 32, Sullivan  
(217) 728-7358 • [www.elzysflowers.com](http://www.elzysflowers.com)

[www.agri-fab.com](http://www.agri-fab.com)

**Agri+Fab**<sup>TM</sup>  
*Expect Respect, Integrity & Growth*



*Supporting the Arts &  
Our Community*

*Sullivan, Illinois*





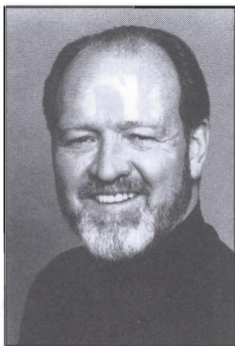
# Encore!

Tate & Lyle  
is proud to  
play a part in  
supporting  
the Little  
Theatre on  
the Square.

**TATE & LYLE**

CONSISTENTLY FIRST IN RENEWABLE INGREDIENTS

[www.tateandlyle.com](http://www.tateandlyle.com)



## Greetings From The Executive Director

Dear Patrons:

In this space last year I mentioned that we had launched our Students Theatre Arts Reach (STAR) touring program in the spring of 2004. I am happy to report that this program has succeeded far beyond our expectations. From January 2004 through May 2005 we have visited 109 different communities (some, more than once) in an area bounded by Jacksonville, Havana, Bloomington/Normal, Rantoul, Danville, Paris, Willow Hill, Kinmundy and Alton. We have played to over 80,500 students presenting 3 different plays. We provide information sheets to teachers to help them prepare their students for our visit to their school. We already have over 50 bookings for the STAR tour this fall and several for the spring of 2006. We are proud of what we have accomplished and want to again thank Consolidated Communications for generously supporting this program.

Our *Applauding the Past, Directing the Future* capital campaign is ongoing. We were fortunate to receive a \$1.5 million, long term, low interest loan from the United States Department of Agriculture Rural Development Program to help us pay for the construction and renovation project completed in 2004. That gave us some breathing room to complete our fundraising. But...it is a loan and we are making monthly payments on it. The sooner we pay it off, the better. If you have made a contribution to the campaign, we thank you! If you have not, please step forward and help us reach our goals. One way to help is to *Adopt-A-Seat*. See page 52 of this booklet for more information about that.

Thank you for being here. Now, sit back, relax and "let us entertain you"!

Sincerely,

Leonard A. Anderson  
Executive Director

Leonard became Executive Director of The Little Theatre On The Square on January 1, 1988 after having served as Managing Director of The Black Hills Playhouse in Custer State Park, South Dakota from January 1976 through May of 1987. Prior to that, he was the Business Manager of Theatre Tulsa in Tulsa, Oklahoma. Leonard earned his Bachelor of Fine Arts and Master of Arts degrees in theatre from the University of South Dakota and a Master of Fine Arts degree in Arts Administration from Southern Methodist University in Dallas, Texas. He is originally from St. Joseph, Missouri and served as a combat infantry platoon leader in Vietnam in 1967.



# 2005 Mainstage Summer Season



## 42nd Street

June 8 - 19



## Swing!

June 22-July 3



Disney's  
**Beauty and the Beast**

July 6 - 17



## Fiddler On The Roof

July 20-31

## JOSEPH AND THE AMAZING TECHNICOLOR DREAMCOAT

August 3-14

16 East Harrison Street  
Sullivan, IL 61951

[www.thelittletheatre.org](http://www.thelittletheatre.org)

*The Little Theatre*  
ON THE SQUARE  
Sullivan, Illinois

### Theatre for Young Audiences

#### **Sleeping Beauty**

June 10, 11, 14, 16-18

#### **Jack & The Beanstalk**

July 8, 9, 12, 14-16

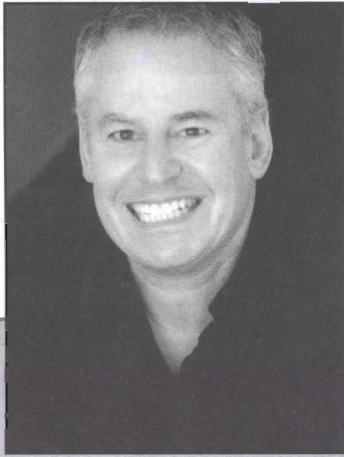
#### **Jungle Book**

August 5, 6, 9, 11-13



Children's theatre sponsored by McDonald's

This program is partially supported by a grant from the Illinois Arts Council, a state agency.



## M. Seth Reines

*Artistic Director*

M. Seth Reines, Artistic Producer of Arizona's Broadway Palm West, is delighted to return to Little Theatre for his 18<sup>th</sup> season as Artistic

Director. He has directed over 350 productions for stage and television, including national tours of *Sunday in the Park with George* and *South Pacific*, working with such stars as Emily Loesser, Angela Lansbury, Chita Rivera, Oprah, Leslie Uggams, Jerry Herman, Tom Wopat, and Peter Allen.

Seth staged the world premieres of *Monky Business*, *Magic Place*, and *Body Parts*; the American revivals of *The Red Mill* and *Knickerbocker Holiday*; the American premiere of *Anne of Green Gables*; the Midwestern premiere of *Closer Than Ever* and the West Coast premieres of *Victor Victoria* and *Ragtime*. Next season, he will direct the Southwest premieres of *Miss Saigon* and *Aida*.

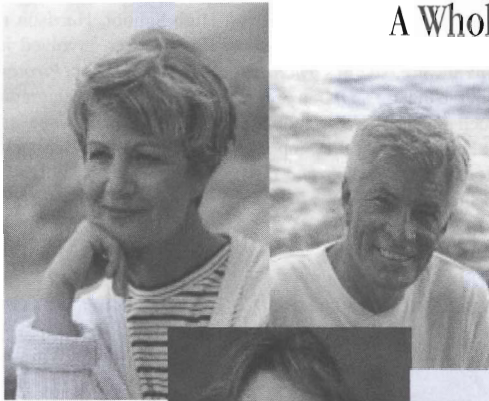
Winner of Cleveland Drama Critics and San Francisco Drama Logue awards, Seth is one of the creators the musical comedy *Monky Business*, which opened at Galveston's Grand Opera House in 1995 and has now played in over 250 cities around the world.

Seth is excited to be a part of Little Theatre's 48th season, working with this enormously talented company of old and new friends. Thank you for supporting live professional theatre and all the arts in your community.

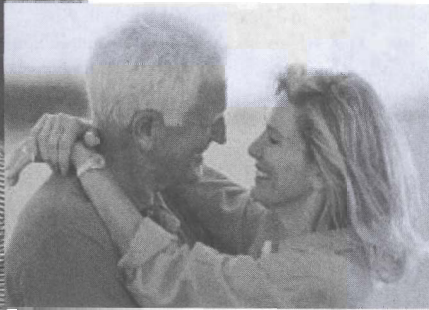


# NATURAL BIO-IDENTICAL HORMONE REPLACEMENT

## A Whole New Perspective...



*The Sullivan Pharmacy* works together with patients and physicians to provide customized bio-identical hormone replacement therapy in the best strength and dosage form to meet each individual's specific needs. We provide bio-identical hormone replacement for men and women. Please contact us for more information.



### ***Goals of Bio-Identical Hormone Replacement Therapy***

- ▶ Alleviate the symptoms caused by the natural decrease in production of hormones by the body
- ▶ Give the protective benefits which were originally provided by naturally occurring hormones
- ▶ Re-establish a hormonal balance
- ▶ Increase bone density
- ▶ Enhance libido

## THE SULLIVAN PHARMACY



102 East Harrison • Sullivan, IL 61951  
Located on the northeast corner of square in Downtown Sullivan

(217) 728-2331

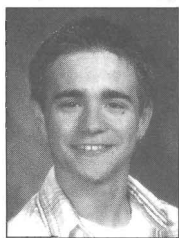
Toll Free: 1-800-422-2364

Fax: (217) 728-2223 • E-mail: [tsp@wireless111.com](mailto:tsp@wireless111.com)

---

---

# Performance Company Profiles



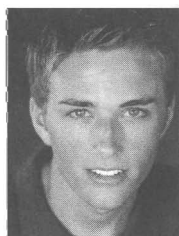
## Harrison F. Austin

As a 17 year old going into his senior year at Sullivan High School, Harrison is proud to once again be working at The Little Theatre. He has been involved in numerous productions at the theatre, such as *The Music Man*, *Oliver*, and *Pirates*. He has also been involved in the theatre's Drama Program since he was in 8th grade. Also, Harrison has very much enjoyed being a shop assistant at the theatre since last summer. This year, he will be working in the shop as well as on stage as Benjamin in *Joseph*. He would like to thank his friends and family, and give a special thanks to Seth Reines, Ms. Marie, and Adam Liston.



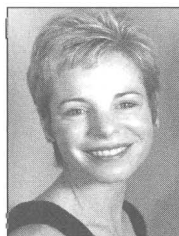
## Jim Ballard

Jim comes to The Little Theatre On The Square from Charlotte, NC. He has recently been seen as Captain Von Trapp in the National and Asian tours of *The Sound of Music*. Favorite credits include Frank Butler in *Annie Get Your Gun*, Whizzer in *Falsetos*, Valentine in *Kiss of the Spider Woman*, and Valmont in *Dangerous Liaisons*. He is excited, and looking forward to his first season at The Little Theatre. He would like to thank his fiancée, Chrissy Wright, for her undying patience, love and support.



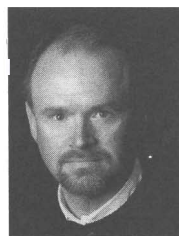
## Seth Bogner

Seth is a recent graduate from the musical theatre department at Arizona State University. He originally hails from Gibson City, Illinois and is happy to be returning to the Midwest for his first summer season at The Little Theatre On The Square. Credits include: *A Chorus Line* (Bobby), *Debbie Does Dallas the Musical* (Rick), *A Day in Hollywood*, *A Night in the Ukraine* (Constantine), *Oklahoma* (Will Parker), and *Camelot* (Mordred). Seth also had the pleasure of working with Tony Award nominated lyricist and librettist Bill Russe on the Los Angeles premier production of *Pageant the Musical* playing Miss West Coast. Seth would like to thank his friends and family for their unbelievable love and support.



## Ann Borders

Ann officially became Ann Borders June 2 of this year, and she, Dick and Lauren are having a wonderful summer. She continues to teach at Millikin University, and will direct a production of *Hansel and Gretel* for the Opera Department this Fall. Special thanks to all of the darn good friends and all of their support all these years!



## Dick Borders

Back again for a sixth season, Dick is excited to be part of this year's company. Since last summer, Dick appeared in the Midikin production, *Laramie Project*, continues to remodel his house, still plays bass in Soul Purpose and got married to the most wonderful woman in the world (see Bio elsewhere in this publication). Please note that these are not listed in order of importance. Dick's day job is Supervisor of Streets for the City of Decatur. Thanks so much to the audience for continued support of live theater in central Illinois!



*We Believe...*  
*in your good health.*



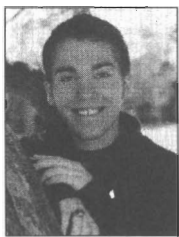
**SARAH BUSH  
LINCOLN**  
HEALTH SYSTEM

[www.sarahbush.org](http://www.sarahbush.org)

---

---

## Performance Company Profiles



### Matt Burns

Matt has just finished his final year of High School in Sullivan. He received outstanding performer four times in The Sullivan Singers. Some of his favorite performances are: *Guys & Dolls* (Benny Southstreet), a lumberman in *Seven Brides for Seven Brothers*, last year's opening show *Hello, Dolly!* starring Anna McNeely, and of course, his first show ever, *State Fair*. Matt is planning to move to New York City this summer for the American Music Dramatic Academy (AMDA). Matt would like to dedicate this performance to Mom and Brad, thanks for catching when falling. Enjoy!



### Ann Ehnes

Ann Ehnes graduated summa cum laude in 2004 from Millikin University, where she was an honors scholar, with a BFA in musical theatre and a dance minor. Originally from Brandon, Manitoba, Canada, some of her theatre credits include *South Pacific*, *State Fair*, *The Music Man*, and *Grease*. She has been seen by Illinois audiences in *Cabaret*, *No, No, Nannette*, and *Sweet Charity*, among others. Miss Ehnes served as the principal artist/teacher of the Millikin University Prep. Department Academy of Dance in 2004-05 and has several additional teaching and choreography credits including Decatur's Best of Summer Stock program. Ann is also an accomplished pianist and French horn player, and a die-hard Red Sox fan.



### Tracy Ganem

Tracy is thrilled to be making her LTOTS debut. A proud member of Actors' Equity, some favorite career moments include Anne in *A Little Night Music*, Woman One in *I Love You, You're Perfect, Now Change*, Evelyn Nesbit in *Ragtime* and of course Maria in *West Side Story* where she met her husband Aaron Lake. Special thanks to Little Theatre On The Square, Seth, her family, friends and Aaron.



### Brandon Haagenson

Brandon Haagenson attends Millikin University in Decatur as a BFA Musical Theater major and Dance minor, and occasionally likes to visit his hometown of Oswego, Illinois. Past professional productions include *My Fair Lady*, *Phantom*, and *Oliver!* at Clinton Area Showboat Theater in Clinton, Iowa, as well as performing at Playland Park in Rye, New York with American Entertainment Productions. For the Millikin stage, shows include *Damn Yankees*, *Much Ado About Nothing*, *Honk!*, *Oh Dad Poor Dad\**, *Dido & Aeneas* and *Equus*. Brandon also had a very important cameo in the film, *Envyng Alice*. Hopefully, he will be spending next semester abroad in London. He gives shout-outs to Alex, Bryce, the other little ones, and thanks Mom, Dad and Jen for their love, MONEY, and support.



**WILL**  
**SUPPORTS**  
**GREAT**  
**PERFORMANCES**  
**BY**  
*THE LITTLE*  
*THEATRE ON*  
*THE SQUARE*

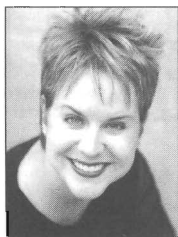


[www.will.uiuc.edu](http://www.will.uiuc.edu)



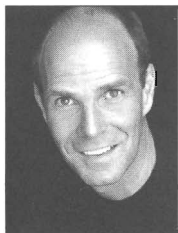
---

## Performance Company Profiles



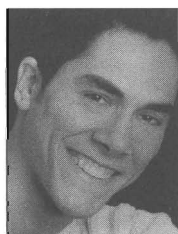
### Gina Handy

Gina Handy is making her Little Theatre debut in *42nd Street* and *Swing!*. Originally from Greenville, SC, Gina now lives with her husband in Phoenix, AZ. Her previous credits include Nellie Forbush in *South Pacific*, Cathy in *The Last Five Years*, Jan in *Grease* (4 times!), Henrietta Angkatell in *The Hollow*, and Lucy in the national tour of *A Christmas Carol*. She has also performed at Busch Gardens Williamsburg and was a featured singer/dancer on board Renaissance Cruise Line. Gina holds her BFA in Musical Theatre from Mars College. Big thanks to Gary, Mom and Dad!



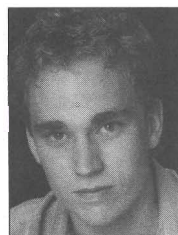
### Michael Haws

See Michael's bio under Artistic Company Profiles on page 24.



### Scott Alan Jones

Scott Alan Jones is thrilled to be sporting the coat of many colors once again! He has portrayed the role of Joseph, one of his favorites, on a recent National Tour, at The Chicago Center for the Performing Arts, and at the Oakley-Lindsay Center for the Performing Arts in Quincy, IL. Scott comes to Sullivan for the first time after completing a successful run of *The Full Monty* at Chicago's brand new, Drury Lane Theatre at Water Tower Place. Wild theatre audiences will never forget his astounding Jeff nominated performance as Dr. Frank-n-Furter in *The Rocky Horror Picture Show...Live!* last year, at the Chicago Center for the Performing Arts. Others may remember him in the World Premiere of Barry Manilow's *Could It Be Magic* (Mercury Theatre). Having portrayed 3 of the 4 singing crooners, Scott has performed in 12 different productions of *Forever Plaid*, including the 2<sup>nd</sup> & 3<sup>rd</sup> National Tours. In addition to theatre, Scott is actively pursuing a career in the Club-Music scene. His latest single, "To The Top," was recently debuted at The House of Blues where he served as headline entertainment under the guise of Mercury Rising! For his parents, Ron and Carmen Jones...*Any Dream Will Do!*



### Alex Jorth

Alex is a senior Musical Theatre major at nearby Millikin University where he has appeared in numerous productions including *Damn Yankees*, *Sweet Charity*, *Jekyll & Hyde*, *A Little Night Music*, *No, No, Nanette* and many others. Alex is thrilled to be returning for his second summer with LTOTS, where you may have seen him in *Hello, Dolly!*, *The Boy Friend*, *Where's Charley?*, *Seussical* or one of the children's shows. He has also performed professionally with Valley Fair Amusement Park's Live Entertainment in Shakopee, MN. Alex is originally from Davenport, IA, and would like to extend his sincere gratitude to his friends and family for their unending love and support.



Channel 51  
Mediacom Channel 6  
Insight Communication Channel 14  
Consolidated Communications Channel 6

# Your New Choice For PBS

## "EVENING AT POPS"



For more than three decades  
**EVENING AT POPS** has entertained American audiences  
with an array of music -- from Tchaikovsky to Sondheim.  
Conductor Keith Lockhart and the Boston Pops Orchestra  
continue the tradition in their 35th season on PBS.

Airing Saturdays at 7:00 pm beginning July 2nd.

**WEIU...Your New PBS Choice For Musical Entertainment**

**WEIU TV**  
600 Lincoln Ave.  
Charleston, IL 61920

(217)-581-WEIU  
1-877-PBS-WEIU  
[www.weiu.net](http://www.weiu.net)

---

## Performance Company Profiles



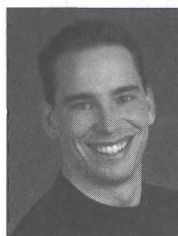
### Rebecca Kloha

Rebecca Kloha is delighted to be making her debut with The Little Theatre On The Square. Currently residing in St. Louis, MO, she is a sophomore at Webster University's Conservatory of Theatre Arts. Most recently, Rebecca appeared in the conservatory's production of *The Lucky Chance*, as well as with the Webster University Dance Ensemble. Before pursuing her education at the university, she attended The Nutmeg Conservatory for the Arts in Torrington, CT for 3 years, where she engaged in pre-professional dance training as well as theatre and voice. Other credits include Dorothy in *The Wizard of Oz*, and Sister Mary Leo in *Nunsense*. Rebecca would like to thank her Mom, Dad and sisters for their endless love and encouragement throughout the years and to my Savior, Jesus Christ who has blessed me with the gift of performing, that I would bring joy to Him through sharing it with others!



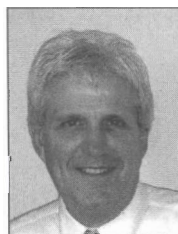
### Jeff Kready

After recently graduating from Washburn University with degrees in voice performance and vocal music education, Jeff is a music teacher and church music/theatre director in Topeka, KS. Favorite roles include: Bobby in *Crazy for You*, Ren in *Footloose*, Pippin in *Pippin*, George Cohan in *George M!*, Tulsa in *Gypsy*, Cornelius Hackl in *Hello, Dolly!* and Spacepunk in *Starmites*. He thanks Jesus for countless blessings, family for so much love, and Apts. 114/115 for endless support. He dedicates his performance to fiancée Courtney Self (also on stage) with who he is completely and utterly in love. PHI 4:13.



### Aaron Lake

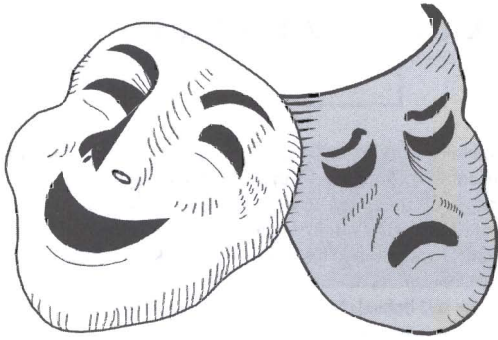
Aaron is very excited to make his debut at LTOTS. A native of Salina, KS he received a BFA at Emporia State University, and an MFA at the Hilberly Repertory Company in Detroit, MI. Favorite roles include Billy Bigalow in *Carousel*, Erik/Phantom in *Phantom*, Sky Masterson in *Guys and Dolls*, Hal Carter in *Picnic* and Creon in *Antigone* to name a few! Aaron also feels very blessed to be working with his lovely wife Tracy Ganem. Thanks to Seth for the opportunity and the Sullivan community for creating an environment of excellence!



### David Leslie

David Leslie (Dr. Dave) is back...this year marks the third time he has been on stage at The Little Theatre. He is also in his seventeenth year as Pastor of First Christian Church (Disciples of Christ) here in Sullivan. As always it's a privilege to help provide Broadway-style entertainment to the patrons and friends of The Little Theatre. Thanks to Seth and Leonard for asking one more time.





**Pearman**  
PHARMACY 

*Find us on the south side of the square*

116 West Court Street  
Paris, Illinois 61944  
217.465.8455

*The stage is not merely  
the meeting place of  
all the arts, but it is  
also the return of  
art to life.*

Oscar Wilde (1854-1900)

Steve Benefiel, R.PH.  
Tom Hebermehl, R.PH.  
Dustin Melton, R.PH.  
Denise Allanson, R.PH.

Looking forward to a great season filled  
with great entertainment!

Auto | Home | Life | Health | Farm



**Steve Bonnett**  
1102 W. Jackson  
Sullivan, IL 61951  
217-728-2591



**Gene Bryant**  
1102 W. Jackson  
Sullivan, IL 61951  
217-728-2591



**Mark Luce**  
205 E. Commercial St.  
Strasburg, IL 62465  
217-644-2203

**COUNTRY**

Insurance & Financial Services

---

## Performance Company Profiles



### Ian Liberto

Ian Liberto is very excited to be working at The Little Theatre for his third summer! Professionally he has been seen in *Cabaret* (Emcee/Choreographer), *Oklahoma* (Will Parker) *Hello, Dolly!*, *Grand Hotel*, *Grease*, and *The Pirates of Penzance*. Ian is a recent graduate of Millikin University where he received his BFA in music theatre and a minor in dance. In addition to his training at Millikin he has danced on scholarship with Gus Giordano Jazz Dance Chicago. Much love to his family, and friends, and a special thanks to Michael, Marie, and Seth for all of their support!



### Anna McNeely

Anna made her professional debut at The Little Theatre On The Square in *The Great Waltz* in 1971 and appeared in productions through 1976. In the last three decades, Anna has collected a lengthy list of accomplishments and performances across the country. Making her Broadway debut with Donny Osmond in *Little Johnny Jones*, she then created the role of Jennyanydots in the original Broadway production of *Cats*, the longest-running show in the history of Broadway. After nearly seven years in *Cats*, Anna departed the hit to become a sensation as Electra in the highly successful revival of *Gypsy* starring Tyne Daly. Anna performed with *Gypsy* for nearly three years on Broadway and three on the road. Later, she was featured in the same role in regional theatre productions starring Betty Buckley, Linda Lavin, Jo Anne Worley, and Lanie Kazan. Anna was the only member of the Broadway cast to be asked to recreate her role in the Bette Midler film version of *Gypsy*, which was seen on network TV. Playing "Mrs. Potts," Anna was an original member of the Broadway production of Disney's *Beauty and the Beast* and was in the first National Tour of that show. Anna has toured with several other National Productions, including *The Music Man* with Tony Randall and *Camelot* with Rock Hudson. Last year Anna performed at The Little Theatre as Dolly in *Hello, Dolly!*. When Anna is not performing, she lives in Florida with husband, Steve Roland. She is Assistant Director of Music at the First United Methodist Church at Stuart, Florida. Coming from Goodspeed Opera House in Connecticut where she was doing *Seven Brides for Seven Brothers*, Anna is happy to be back in Sullivan to play yet another matchmaker.



### Luke Mills

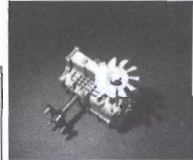
Luke Mills is thrilled to be performing with Little Theatre On The Square this summer. Luke is a recent graduate of Southwest Missouri State University (recently changed to Missouri State University) with a BFA in musical theatre, where his credits include: *The Emerides* (Orestes), *Crazy for You* (Mingo), *Godspell* (Jesus), *The Comedy of Errors* (Merchants), *The Secret Garden* (Dickon), *Guys and Dolls* (Nicely-Nicely Johnson) and, *Mother Hicks* (Ricky Ricks). Regional credits include: *Bat Boy, the Musical* (Bat Boy), *The Who's Tommy* (Tommy) and, *Merriily We Roll Along* (Charley Kringas). Luke was a featured singer in *The Tempest* (Capricorn) with the Shakespeare Festival of Dallas as well as being a featured singer and playing the balalaika in the production of *As You Like It* (entertainer/comusic director) with the Chicago Shakespeare Theater. Luke would like to thank his family who have, for some reason, continued to support his crazy career choice throughout the years.



Hydro-Gear®



Hydro-Gear is proud to support the community by its contributions to education and the arts.



### A World Leader in Hydrostatic Transmissions

Since 1991 Hydro-Gear, of Sullivan, Illinois, has led the field in the design, manufacture, sales and service of quality hydrostatic transaxles for the lawn and garden industry. The consumer has come to rely on the Hydro-Gear name for transaxles that provide the homeowner with greater maneuverability to take care of those hard-to-mow areas.

For riding mowers from the backyard to the baseball stadium there is one name to remember.

## Hydro-Gear®

*We set the wheels in motion.®*



Located in Amish Country  
208 West Jackson Street  
Sullivan, Illinois 61951  
Phone - 217-728-3166

- ▶ Restaurant & Bakery
- ▶ Amish Oak Furniture
- ▶ Gifts & Collectables

#### Market Hours

Monday - Thursday 10 am. - 7 pm.

Friday & Saturday 10 am. - 8 pm.

#### Restaurant Hours

Monday - Thursday 11 am. - 7 pm.

Friday & Saturday 11 am. - 8 pm.

#### Saturday Only

Breakfast Buffet 7 am. - 10 am.

Closed on Sunday



Amish Style Buffet



Visit our web page  
[www.usrmarket.com](http://www.usrmarket.com)





---

---

## Performance Company Profiles



### Jack Milo

He would start off by saying how he is happy returning to The Little Theatre. Except he would be happier laying on a beach with a pina colada in his hand. He would be REALLY happy if he hit the lotto right about now. His film credits: *That Thing You Do*, *Conversations In Limbo*, *Sunflower*. Audiences here are still sick from seeing him in *Now Cut That Out!*, *Moon Over Buffalo*, *South Pacific*, among many others that put some in the hospital, mainly for psychiatric reasons. The most important aspect of all this is—if you the audience are reading this during a show, we got a problem. Did we mention that he's happy to be back?



### Drew Nellessen

Drew Nellessen is thrilled to be making his debut on The Little Theatre stage! Drew is a native of Valparaiso, Indiana and has just completed his sophomore year as a BFA Musical Theatre major and Dance Minor at Millikin University. There, he has been seen in shows such as *Sweet Charity*, *Secret Garden*, and *Damn Yankees*. Drew's other professional credits include Wagon Wheel Theatre and Six Flags Great America in Gurnee, Illinois. He was most recently sent over to the Dominican Republic to perform a "Caribbean Cabaret" over his spring break. After this summer, Drew will be packing his bags and studying abroad for the fall semester in London, England. Drew would like to thank his parents and his family and friends who travel near and far to see him do what he loves to do most—perform! Thanks for the support and enjoy the show!



### Elizabeth Pugh

Elizabeth is thrilled to be returning to The Little Theatre On The Square with roles in the first three shows of the summer season. She has been seen previously on The Little Theatre stage in *The Sound of Music*, *Annie*, *Honk!*, *Hello, Dolly!*, *An Old Fashioned Christmas*, *It's Always Time for Christmas*, *School House Rock Live*, *Music Man Jr*, and *Once On This Island Jr*. She will be a senior at Mattoon High School where she has been president of her class and involved in student council for the past three years. Elizabeth stays very active in dance, voice and drama lessons, and wants to give a special thanks to Ms. Marie and all her instructors. Elizabeth also wants to thank her family for always encouraging her to "Reach for the Stars!"



### Whit Reichert

Whit Reichert is very excited about returning to The Little Theatre, having last appeared in the '97 season's production of *Sugar Babies*. Other favorite shows on the Little stage include: *Annie Get Your Gun* as Chief Sitting Bull, *Camelot* as Pelinore, *Man of La Mancha* as Sancho Panza, *Me and My Girl* as Sir John Tremayne and *Best Little Whorehouse in Texas* as the Narrator/C.J. Scruggs/Governor. Regionally, Whit has performed at The St. Louis Repertory Theatre, Cincinnati Playhouse in the Park, The Riverside Theatre in Vero Beach, Great Plains Theatre Festival, Casa Manana in Fort Worth, Great Lakes Festival Theatre, The Muny Opera and The Shakespeare Festival in St. Louis. Most recently, Whit has completed productions of *You Can't Take It With You* as Grandpa Vanderhoff at the Beef and Boards in Indianapolis and *MacBeth* as the Porter at The St. Louis Black Repertory Theatre. Local audiences may recognize Whit as the spokesperson for the Capital Airport in Springfield. He resides in St. Louis with the love of his life, wife/director/choreographer, Millie Garvey and wants to send a special thank you to close friends Ron and Sharon White.

# Sisters Restaurant

"On the Square"

Great Entrees...too many to list—come check them out!

Enticing Appetizers... Mouth-watering desserts...

Fried Potato Chips

Fried Sweet Potato Chips

Fried Pickles

Veggie Quesadillas

Chicken Quesadillas

Amaretto Bread Pudding

Crepe Brulee

Chocolate Seduction

Tiramisu

Cheesecake (regular & sugar free)

Sisters Dessert Trio

Ice Cream FriaZo



Espresso . Cappuccino . Latte

Specialty Coffees

Specialty Teas and Tea Latte

Raspberry Iced Tea



**Our party room is now open.**

Large groups • Parties • Meetings • Special Events



9 South Main  
Sullivan, IL 61951

217.728.2717

Hours:

Tuesday–Saturday

Lunch 11 a.m.–2 p.m.

Dinner 5 p.m.–8 p.m.

Sunday

11 a.m.–2 p.m.

Closed Mondays

Reservations accepted



On with the  
show!

Wishing you a great  
season



**Scott State Bank**

303 West Main  
Bethany, IL 61914  
217-665-3321

100 Main  
Dulton, IL 61925  
874-2390

350 W. Jackson  
Sullivan, IL 61951  
738-7722

Member F.D.I.C.

A Real  
Community  
Bank

Member FDIC

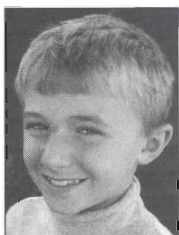
---

## Performance Company Profiles



### Courtney Self

Courtney graduated from The Hartt School in Hartford, CT this past May and is delighted to be spending her summer at The Little Theatre. Last summer she was seen in *Sweet Charity* with Valerie Wright at the Barrington Stage Company and also performed with Karen Mason in *Gypsy* at Sundance in Utah. Favorite roles include Peter in *Peter Pan*, Gladys in *The Pajama Game*, Val in *A Chorus Line*, and Lois in *Kiss Me, Kate*. Courtney is anxiously awaiting her marriage at the end of the summer to another member of this season's company, Jeff Kready, and feels blessed to get the opportunity to perform with him. Romans 5:8.



### David Richard (Trey) Skocy III

Trey is seven years old (eight as of July 13th) from Mattoon, Illinois and is a student at Riddle Elementary. He is thrilled to be making his debut as Chip! Credits include Herb the Gardener in *How Does Your Garden Grow*, and Little Daniel in *Once On This Island*. When not on stage, he can be found playing soccer, baseball or basketball. He also enjoys being big brother to Henry and Jason. Trey hopes to one day be a successful musical director. A special thanks goes out to his cast members for providing him with great memories, to his family for their support, and Ms. Marie for the opportunity to be a little twinkle among the stars.



### Angie Smith

Angie is thrilled to be returning to The Little Theatre On The Square for another wonderful summer! Last summer you may remember her as Dulcie in *The Boy Friend*, Amy in *Where's Charley*, and the wicked stepmother in *Cinderella*. Regional credits include Wagon Wheel Theatre, as well as Broadway Palm West, Broadway Palm, and Dutch Apple theatres where she just completed performing *Gigi* in *Miss Saigon*. Angie graduated from Millikin University with a degree in Musical Theatre and minor in dance. Favorite roles include: Lucy in *You're a Good Man, Charlie Brown*, Mrs. Nordstrom in *A Little Night Music*, Dorine in *Tartuffe the Opera*, and Narrator in *Joseph*. Angie will soon be appearing in the National Tour of *Thoroughly Modern Millie*. She would like to thank family and friends for their never ending support and belief that dreams do come true!



### Kristen J. Smith

Kristen comes to The Little Theatre On The Square after just completing a run of *Beauty and the Beast* at Carousel Dinner Theatre. She performed as a singer in the Radio City Christmas Spectacular in Branson and Milwaukee and also was the dance captain on the Disney Wonder cruise ship. Other favorite credits include: Kim in *Bye Bye Birdie*, Hodel in *Fiddler on the Roof*, Ariel in *Footloose*, Julie Jordan in *Carousel*, Josie Cohan in *George M!*, Alice in *You Can't Take it With You* and *West Side Story* (Marriott Lincolnshire). A million thanks to her biggest fans—Mont and Dad; and love to her man Brandon.



## Harrison Street Inn

Offering Spacious Rooms Each Featuring

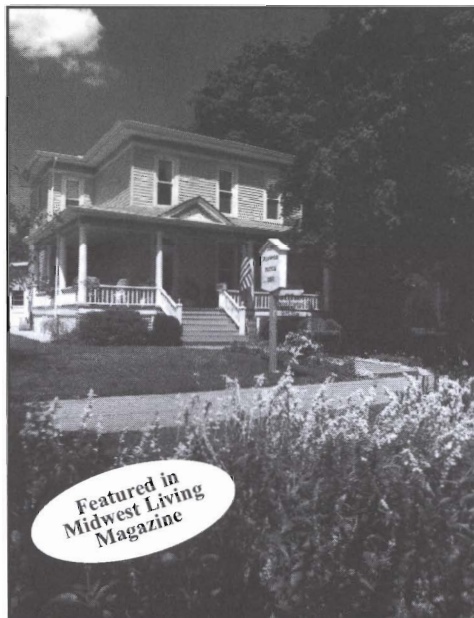
- Private Bath & Hairdryer
- Cable TV & Refrigerator
- Private Telephone Line
- Coffee Maker & Supplies
- Private Entrance

204 E. Harrison Street  
Sullivan, Illinois 61951  
217-728-4550

Discover, Visa and Mastercard Accepted



One Block East of The Little Theatre On The Square  
Owned and Operated by Dr. Tom & Emilee Best



Featured in  
Midwest Living  
Magazine

## The Flower Patch Bed & Breakfast

A Victorian Home with  
Public Gardens, Gift Shop  
& Artist-in-Residence

Bill & Lynne Harshbarger, Hosts

225 East Jefferson  
Arcola, Illinois 61910  
217-268-4876

[www.illinoisads.com](http://www.illinoisads.com)

Gift Certificates Available

Only 20 minutes from Sullivan

---

## Performance Company Profiles



### Lauran Stanis

Lauran Stanis remains at The Little Theatre after a great year with our S.T.A.R. program. She performed in *Schoolhouse Rock Live Jr.*, *The Garden of Rikki Tikki Tavi* (Rikki), *Accidental Friends* (Hilda), assistant directed *Once On This Island, Jr.*, and taught dance and drama classes. Previously she has performed and choreographed for Festival 56 in *Anything Goes* (Chastity), *Pirates of Penzance* (Kate), and *A Midsummer Nights Dream* (Cobweb). Lauran holds a BFA in Musical Theatre from Millikin University where she was seen in *The House of Bernarda Alba* (Adela), *No, No Nanette*, *Sweet Charity* (Carmen), *Guys and Dolls*, *Cabaret* (Texas), and choreographed *A Little Night Music*. She would like to thank The Lizard, her Daddy, Big G and Miss Marie for all their faith and support.



### Michelle Suzanne Valenti

Michelle Valenti is thrilled to be a part of The Little Theatre On The Square summer season! Most recently Michelle played the role of Ti Moune in *Once On This Island, Jr.*, performed by The Little Theatre's Drama Outreach program. She just finished her senior year with honors at St. Anthony's High School in Effingham, IL. Michelle plans to attend Millikin University with a major in Musical Theatre, working towards her BFA. Michelle wants to thank all her family and friends for all their support. She sends a special thanks out to her mom for all those nights of driving to Sullivan and back. Enjoy the show!



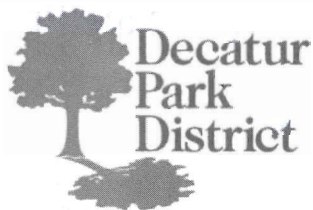
### Chrissy Wright

A native Cincinnati, Chrissy is truly honored to have been asked back to Sullivan's Little Theatre On The Square for her second season. You may have seen her last year as Masie in *The Boy Friend* and Luisa Contini in *Nine*. Over the past 20 years she has been lucky enough to have toured the world doing what she loves. A few of her favorite shows include: *Closer Than Ever* in Scotland, *On the Town* in China and *Imagination* in Japan. She has also sung backup for Ben Vereen and Liza Minnelli, as well as opening on two World tours for Bill Cosby and Fred Travalena. Some of her favorite roles include: Lorraine in the Broadway tour of *Ziegfeld Follies*, the Spider Woman in *Kiss Of The Spider Woman*, Velma in *Chicago*, Anita in *West Side Story* and the Narrator in *Joseph and the Amazing Technicolor Dreamcoat*. She would like to dedicate this season to her fiancée Jim Ballard who brings reality and stability in this world of make believe.



### Melissa Weaver

Melissa is very excited to be returning to the stage of The Little Theatre On The Square. You might have seen her before in *Annie*, *An Old-Fashioned Christmas*, *Wizard of Oz*, *Snow White and the Seven Dwarfs*, and most recently, *Once on This Island, Jr.* Melissa will be very busy next year as a freshman at Sullivan High School being involved in student council, a member of football cheer squad, piano lessons, and taking up to six dance lessons a week. She would like to thank Ms. Marie for being such an awesome teacher!



announces

# Storyteller Theatre Auditions

A Children's Theatre production  
for children, by children

- \* Annual full-scale production of a children's classic since 1984
- \* Highly acclaimed past productions of "The Little Mermaid" & "Beauty and the Beast"

**WHO CAN AUDITION?** Any child in grades 1 through 8  
**WHEN?** Sundays, October 2 & 9, 2005  
**WHERE?** Decatur Area Arts Council, 125 N. Water St.  
**INFORMATION?** Call the Decatur Park District at  
(217) 422-8535 after Sept. 1 to get an audition appointment

Co-Sponsored by



This program is  
partially sponsored  
by a grant from the  
Illinois Arts Council



---

---

# Artistic Company Profiles

## Millie Garvey...*Director/Choreographer*

Millie Garvey (Choreographer for *Beauty and the Beast*—Director/Choreographer for *Fiddler on the Roof*) is pleased to continue her association with The Little Theatre which began in 1985 and includes a Herald award for the production of *Me and My Girl*. Her work was last seen here in the 2001 production of *An Old Fashioned Christmas*. Since then, Ms. Garvey has had the pleasure of collaborating with Artistic Director, Seth Reines at the Broadway Palm West Theatre with their productions of *Evita* and *West Side Story* in which she won an Arizoni for Best Choreography 2003. She has also choreographed the productions of *Music Man* and *Fiddler on the Roof* for Casa Manana in Fort Worth, Texas, and did double duty for the Prather Family Theatres production of *Kiss Me Kate* in Fort Myers, Fla. and Lancaster, Penn. Millie's career has spanned over twenty-five years and one hundred and fifty productions, including three world premieres, *Monky Business*, *Camila*, and a children's opera entitled *Joshua's Boots*. Her work has been seen in the Opening Ceremony of the Tenth Pan Am Games, the 35<sup>th</sup> Anniversary of Mary Kay, the 100<sup>th</sup> anniversary of the I.B.E.W., the Castle Christmas show at Disney World, and 2 award winning music videos in St. Louis, her hometown. Most of all she is very happy to get to work with her husband, Whit Reichert and spend another summer with good friends, Ron and Sharon White.

## Michael Haws...*Managing Artistic Director*

Michael returns to us after state hopping this past year. After his performance here in *Same Time, Next Year* last October, he went to AZ to direct *Sleeping Beauty* and perform in a *Christmas Revue* for Broadway Palm West Dinner Theatre. He, then, went to Beef & Boards in Indianapolis to perform the role of Paul in *You Can't Take It With You*, and just finished the role of Doc in *West Side Story* for The Fireside Theatre in Wisconsin. Thank you for supporting live theatre in the Midwest.

## Marie Jagger-Taylor...*Director/Choreographer*

Marie Jagger-Taylor is thrilled to be part of this summer season, working once again with Scenic Designer Noel Rennerfeldt and Stage Manager Tom Reynolds. As a freelance director/choreographer, Marie has numerous regional, touring and children theatre credits on her resume, including *Seussical*, *Grease*, *Nine*, *Fiddler*, *Annie*, *Oliver!* and numerous Christmas shows here at The Little Theatre On The Square. Marie is Director of Education for TLTOTs where she manages and instructs Dance and Drama Classes for students 18 months to adult and serves as director of the touring program dedicated to bringing Arts into Education. She recently directed/choreographed her drama students in a production of *Once On This Island, Jr.*, which played to public and school audiences, bussing in area schools to TLTOTs. Her favorite job, though, is that of wife to agrarian husband, Jody, and mom to Caleb (12), Emma (8) and Gabriel (5) where they all reside on the farm in Macon, IL. ENJOY!

## Diane Kinkennon...*Lighting Designer*

Diane joins The Little Theatre On The Square from Illinois State University, where she is pursuing an MFA in lighting design. Her recent designs there include *The Fair Maid of the West*, *Pride's Crossing*, and *The Marriage of Figaro*. She has worked at Illinois Shakespeare Festival and as lighting and sound designer at Greenbrier Valley Theatre in Lewisburg, West Virginia. A native Tennessean, Diane has worked on numerous productions for the University of Memphis and has been a guest designer for Theatre Memphis' production of *The Last Five Years* and *The Laramie Project* at The Circuit Playhouse.

A century of dedication to you.

## Celebrating 100 Years of Service

First National Bank of Sullivan congratulates  
The Little Theatre on its 48th season.

*"You use a glass mirror to see your face; you  
use works of art to see your soul."*

— George Bernard Shaw —



1 South Main • 503 S. Hamilton  
Sullivan, Illinois • 728-4302

Member  
FDIC

## Sullivan Country Club

(217) 728-7232



**We now accept credit cards.**

*Lovely Country View • Delicious Food • Ruttkie's Famous Pies*

**Theatre Patrons & Motorcoach Groups**

*Receive a Complimentary Glass of House Wine with Dinner*

*Reservations Preferred*

*Sunday Brunch Buffet 11 AM - 1 PM*

*Tuesday through Sunday Lunch 11 AM - 1:30 PM*

*Tuesday through Saturday Dinner 5 - 9 PM*

---

---

## Artistic Company Profiles

### Ann Nieman...*Director/Choreographer*

Ms. Nieman has directed and choreographed a number of shows for respected theatres throughout the U.S. Favorite productions include *Jesus Christ Superstar*, *Evita*, *Little Shop of Horrors*, *West Side Story*, *Joseph...Dreamcoat*, and *Me & My Girl*. She has been the recipient of the Dallas Theatre League's Award for Outstanding Choreography of a Musical for the production of *Sweet Charity* at Lyric Stage in Texas. Off-off Broadway credits include *In the Name of God...or Honk if You Love Satire* and *Wind in the Willows*. Internationally, she has choreographed a European tour of *42<sup>nd</sup> Street*. A native of Texas, Ms. Nieman received her B.A. in theatre from North Texas State University, and currently resides in New York City.

### Christine Peters...*Scenic Designer*

Christine Peters is happy to be back at The Little Theatre On The Square. Some of her past credits at The Little Theatre include *Footloose*, *Jesus Christ Superstar*, *Honk!*, *Forever Plaid* and *The Nuncracker*. Christine lives in New York where she designs and assists. Currently Christine is assisting on *Chita Rivera, A Dancer's Life* which will be coming to Broadway later this year. She enjoys walks in Sullivan's beautiful park and the drink specials at O'Malley's.

### Jennifer Peterson...*Costume Designer*

This is Jennifer's second season with The Little Theatre On The Square. She designed the costumes last summer for *Cinderella* and was the costume shop manager for *Hello, Dolly!* and *The Boy Friend*. Jennifer is currently a third year graduate student in theatrical costume design at Southern Illinois University, Carbondale. Jennifer has also worked for Louisiana State University, The Utah Shakespearean Festival, The Sacramento Theater Company and Utah Opera. Her other costume design credits include *Home*, *The Green Bird*, *In The Blood*, *The Haunting of Three West* and *Three*. She would like to thank Kathryn and Ben for all their support.

### Noel Rennerfeldt...*Scenic Designer*

Noel is back for his seventh or eighth season in a row (he's lost track). Last season he designed *Where's Charley?* and *Seussical*. This season Noel is designing *Joseph* which happens to be the first show he designed for Little Theatre On The Square back in 1998 or 9. Other recent credits include *The King and I* and *Oh Mama, No Papa!* for Circa '21 in Rock Island. Noel is the staff scenic and lighting designer for the Performing Arts Department at Rockford College in Rockford, Illinois. He's glad to be back in Sullivan, his home away from home.

### Tom Reynolds...*AEA Stage Manager*

Off Broadway: *Eye Witness Blues* (New York Theatre Workshop), *The Immigrant* (Hello Entertainment), *Golf: The Musical* (Erick Krebbs Ent.), *Right You Are* (National Actor's Theatre), *Hank Williams: Lost Highway* (MET/NJNG Productions), *Faster*, *Finder's Fee* (Rattlestick). Regional: *A Tuna Christmas*, *Barefoot in the Park*, *Jitney* and *How I Learned to Drive* (Studio Arena) and five seasons at The Little Theatre. Tours: *Anything Goes* (Circa 21) and *The Heart is a Lonely Hunter* (The Acting Company.)



# GORDON'S

*Custom Framing*



*"We Support  
the Art."*

— Since 1982 —

1613 Charleston Ave., Trinity Towers, Suite 3 • Mattoon, IL 61938  
Cell: (217)460-1183 • Home: (217)797-6974

# O'Malley's



*Non Smoking Dining Room Available*

- ✻ STEAKS
- ✻ MEXICAN
- ✻ SANDWICHES
- ✻ ENTERTAINMENT

**BREW &  
STEW**

**217-728-9202**

Hours: Monday - Saturday 11:00 a.m. - 1:00 a.m.

---

---

## Artistic Company Profiles

### Nathan R. Rohrer...*Costume/Scenic Designer*

Nathan Rohrer, a native of Beloit, WI, began his theatre career as a performer and has worked in several theme parks on the East Coast. Nathan has since found other talents and is now pursuing a career as a scenic and costume designer. Next fall, Mr. Rohrer will be continuing at the University of Wisconsin-Stevens Point as a fifth year senior and will receive a B.A. degree in Drama. Recent production credits include *The Cripple of Inishmaan*, *Picasso At the Lapin Agile*, and *Fiddler On The Roof*. Nathan is thrilled to be designing for The Little Theatre this summer!

### Sam Scalamoni...*Director*

Mr. Scalamoni served as the Associate Director of *Disney's Beauty and the Beast* for more than three years, setting and maintaining companies on Broadway, the United Kingdom, Brazil, and Korea. His directing career includes six New York City premiers Off-Broadway at the Theatre-Studio, including the world premier of playwright Lauri MacMillan's *Driftwood*. He served as Artistic/Producing Director of The Hackmatack Playhouse in Berwick, Maine from 1995-2000. From 2000 to 2001, Mr. Scalamoni served as Artistic Director of The Lycian Centre for the Performing Arts in Orange County, New York where he directed the new version of *You're A Good Man, Charlie Brown*, Neil Simon's *Star-Spangled Girl*, *Schoolhouse Rock Live!*, and *Little Shop of Horrors*. He is a founding member and currently serves as Managing Artistic Director of The Arts Trust, a non profit performing arts organization and theatre company in Bergen County, New Jersey. In 2003 Mr. Scalamoni founded the entertainment company, CLARITY, which develops and produces film and television projects. Mr. Scalamoni's acting career includes starring on Broadway as Cyrano in *Cyrano the Musical*, and as swing and dance captain of the Broadway Company of *Les Miserables* for two and a half years. He also toured the USA starring as Pippin in *Pippin* with Ben Vereen and as Jean Poiviere and Enjolras in *Les Miserables*.

### Kenny Shepard...*Director*

Kenny Shepard played Off-Broadway for five years in Mercedes Ellington's swing show, *This Joint Is Jumpin'* and recently dance captained *Swing!* with dance partner Deb Wims. Kenny is an on-camera choreographer for Broadway Jr.'s Disney Collection and for MacMillan-McGraw Hill, seen on DVDs in over 90,000 classrooms worldwide. His performing credits include Munkustrap in *Cats*, Scarecrow in *The Wizard of Oz*, Action in *West Side Story*, Will in *Some Enchanted Evening*, and the dream ballet for Virginia Opera's *Oklahoma!* Other credits include *The Michael Awards* for fashion starring Liza Minnelli and Mary Tyler Moore, Atlantic City, Branson, and world cruise ships touring the Americas, Africa, Europe, Scandinavia and Russia. At Walt Disney World, Kenny played Belle's Prince in over 1,000 performances of *Beauty and the Beast*. With Carol Worcel, Kenny owns BlueEyedEvents.com, producers of entertainment ranging from custom convention shows to opening ceremonies for world class sporting events, starring such celebrities as David Canary, Sandi Patti, Steve Wariner, and Peyton Manning. Kenny is an Encore Award winner for Best Choreography, a published songwriter, professor of dance at his alma mater, Butler University. Many thanks to Associate Choreographers Deb Wims and Carol Worcel.

### Robbie Vaughn...*Scenic Designer*

Robbie has received his masters degree in scenic design from Northern Illinois University. His design credits with NIU include *Marisol*, *Relative Values*, and *Three Sisters*. Robbie has designed productions for numerous theatres across the country in Oregon, Montana, Arizona, Wisconsin and Illinois. He currently lives in Phoenix, AZ with his wonderful wife Debbie and their two dogs Ricky and Lucy.



## First Neighbor Bank, N.A.

Checking — Savings — Certificates of Deposit  
 Overdraft Protection — Credit & Debit Cards  
 Consumer & Commercial Loans  
 Secondary Market Mortgage Loans  
 Personal & Business Accounting  
 Income Tax Preparation & Electronic Filing

Online Banking

www.firstneighbor.com

Toledo  
201 N Meridian Toledo — (217)-849-2701

Greenup  
705 E Cumberland Greenup — (217)-923-3125

Neoga  
223 E 6th Street Neoga — (217)-895-5800

Charleston  
1415 18th Street Charleston — (217)-345-4060

Casey  
107 NW 1st Street Casey — (217)-932-4948

Newman  
511 S Broadway Newman — (217)-837-2497



- Illinois Based
- Truckload Carrier
- General Freight



Supporting the Arts  
in Our Community

217-728-9800

112 N. Main St.  
Sullivan, Illinois 61951  
www.kellerlogistics.com

# H



## Hagen's Family Pharmacy

is proud to support  
this year's performances at

*The Little Theatre  
On The Square*



**BUSINESS PHONE:**

217-728-7388



**HOME PHONE:**

217-728-8069



8 EAST HARRISON ST.  
SULLIVAN, IL 61951

Bob  
Hagen,  
R.Ph.

Cathy  
Hagen,  
R.Ph.

## City of Sullivan

*After all the hard work,  
rehearsals, wardrobe and  
make-up for this exciting  
theatre season...when the  
curtain goes up ---  
Break a Leg!*





# Forty-Second Street

Music by  
**Harry Warren**

Lyrics by  
**Al Dubin**

Book by **Michael Stewart & Mark Bramble**

Based on the Novel by **Bradford Ropes**

Original Direction and Dances by **Gower Champion**

Originally Produced on Broadway by **David Merrick**

Scenic Design by  
**Robbie Vaughn**

Lighting Design by  
**Diane Kinkennon**

Costume Design by  
**Jennifer Peterson**

Production Stage Manager  
**Tom Reynolds\***

Music Direction by  
**Jason Yarcho**

Directed and Choreographed by  
**Ann Nieman**

## The Cast

(In order of appearance)

Andy Lee.....	Ian Liberto
Maggie Jones.....	Gina Hardy
Bert Barry.....	Whit Reichert*
Anytime Annie.....	Courtney Self
Billy Lawlor.....	Jeff Kready
Peggy Sawyer.....	Kristen J. Smith
Julian Marsh.....	Michael Haws*
Dorothy Brock.....	Chrissy Wright*
Abner Dillon.....	Leonard Anderson
Pat Denning.....	Jim Ballard*
Phyllis.....	Ann Ehnes
Lorraine.....	Lauran Stanis
Ensemble.....	Matt Burns, Seth Bogner, Brandon Haagenson, Alex Jorth, Rebecca Kloha, Luke Mills, Drew Nellessen, Elizabeth Pugh, Michelle Valenti, Melissa Weaver

(Ian Liberto served as Dance Captain for this production.)

\* Members of Actors' Equity Association, the union of Professional Actors and Stage Managers in the United States.

**ssdc**

The Director-Choreographer is a member of the  
*Society of Stage Directors and Choreographers,*  
*Inc.,* an independent national labor union.

**42nd Street** is presented by arrangement with TAMS-WITMARK MUSIC LIBRARY, INC.,  
560 Lexington Avenue, New York, New York 10022

# 42nd Street Scenes and Musical Numbers

## ACT ONE

- Scene 1: The 42nd Street Theatre, New York City, 1933  
*Opening Number* ..... Andy Lee and Ensemble  
*Young and Healthy* ..... Peggy and Billy  
*Shadow Waltz* ..... Maggie, Dorothy, Female Ensemble
- Scene 2: The Gypsy Tea Kettle  
*Go Into Your Dance* ..... Maggie, Peggy, Annie, Phyllis,  
 Lorraine, Andy
- Scene 3: The 42nd Street Theatre, New York  
*You're Getting To Be A Habit With Me* ..... Dorothy
- Scene 4: Dorothy Brock's Dressing Room
- Scene 5: The 42nd Street Theatre, New York  
*Getting Out Of Town* ..... Maggie, Bert, Pat, Ensemble
- Scene 6: Arch Street Theatre, Philadelphia  
*Dames* ..... Billy, Ensemble
- Scene 7: The Regency Hotel, Philadelphia  
*I Know Now* ..... Dorothy
- Scene 8: Pretty Lady Opening Night, Philadelphia  
*I Know Now* ..... Billy  
*We're In The Money* ..... Billy, Annie, Phyllis, Lorraine,  
 Peggy, Ensemble  
*Forty-Second Street* ..... Dorothy, Ensemble

*15 minute Intermission*

## ACT TWO

- Scene 1: Outside Stage Door, Arch Street Theatre, Philadelphia
- Scene 2: Dressing Rooms, Arch Street Theatre  
*There's A Sunny Side To Every Situation* ..... Ensemble
- Scene 3: Outside Stage Door, Arch Street Theatre
- Scene 4: Broad Street Station, Philadelphia  
*Lullaby Of Broadway* ..... Julian & Company
- Scene 5: Backstage, 42nd Street Theatre
- Scene 6: Peggy Sawyer's Dressing Room  
*About A Quarter To Nine* ..... Dorothy and Peggy
- Scene 7: 42nd Street Theatre  
*Shuffle Off To Buffalo* ..... Bert, Annie, Maggie, Female Ensemble  
*42nd Street* ..... Peggy and Company
- Scene 8: 42nd Street Theatre  
*42nd Street* ..... Julian

*Orchestra and Production Staff listed on page 32*

## 42nd STREET CREDITS

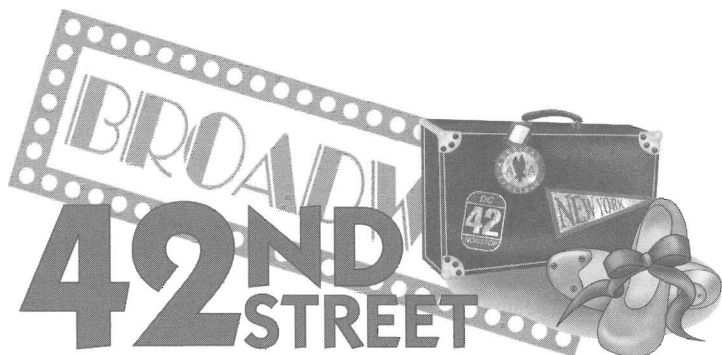
*continued from page 31*

### Orchestra


Conductor/Piano ..... P. Jason Yarcho  
Keyboard..... W. David Hobbs  
Trumpet..... Mike Jones  
Percussion ..... Rob Reder  
Bass..... Jon Burkhardt

### Production Staff

Production Manager..... Adam Liston  
Assistant Stage Managers ..... Katy McGlaughlin, Emily Wilson  
Master Carpenter..... Loren Pratt  
Carpenter..... Jason Dodough  
Charge Scenic Painter..... Jenn Scheller  
Master Electrician..... Ben Edwards  
Sound Engineer..... Walter Beals  
Master Technician..... Sarah Kattau  
Deck Technicians..... Megan E. Stadick, Cami Stoaks  
General Technician..... Bailey Holland  
Costume Shop Foreman..... Katie Schmidt  
Stitchers..... Nathan R.Rohrer, Sarah Marie Stark  
Wardrobe..... Holly Ashcom







**Kadoozies**  
*Exceptional Jewelry, Toys, Gifts*  
 Kadoozies is a little bit of fashion, a whole lot of fun!  
 Stop in and see us!  
**On the Square in Sullivan, Illinois**  
 (717)728-7220 Summer Hours: Tues-Sat 10 am-8pm

## WEST & COMPANY, LLC

*Certified Public Accountants and Consultants*

- Greenville 618-664-4848
- Effingham 217-347-5181

- Mattoon 217-235-4747
- Sullivan 217-728-4307



## MID-STATE TANK CO., INC.

P.O. Box 317 • Sullivan, IL 61951  
 PH: 217/728-8383 • FAX: 217/728-8384 • TOLL FREE: 800/722-8384



### Illinois Masonic Home "A Premiere Senior Lifestyle Community"

*Apartments/Duplexes Sheltered Care Skilled/Intermediate  
 Nursing Care*

Call today to see what the Illinois Masonic Home has to offer you or your special loved one.

Director of Admissions  
 Illinois Masonic Home  
 One Masonic Way  
 Sullivan, IL 61951  
 217-728-4394 or toll free 1-888-375-8323

Our nursing care facility is Medicare/Medicaid Certified.  
 We accept Masons as well as those without Masonic affiliation.

---

---

## Artistic Company Profiles

### Kathryn Wagner...*Costume Designer*

Kathryn Wagner is currently an Assistant Professor and Resident Costume Designer at the Department of Theater at Southern Illinois University Carbondale. Current design projects include *My Three Angels* (University of Illinois, Summer Studio Theatre Company) and *My Fair Lady* (SIUC McLeod Summer Playhouse). Ms. Wagner returns to The Little Theatre having designed *Hello, Dolly!* and *The Boy Friend* last season. Other Little Theatre shows include *Oklahoma!*, *The Pirates of Penzance*, and *Grease*. Other recent credits include *The Green Bird* and *On the Verge* (SIUC), *The Glass Menagerie* (UIUC Summerfest) and *A Man For All Seasons* (Peninsula Players). Prior to coming to the Midwest, her work was seen in many New York area theatres including McCarter Theatre, Lamb's Theatre Company, and the New Jersey Shakespeare Festival. Ms. Wagner holds a BFA from the Goodman School of Drama, an MFA from Rutgers University, and is a member of United Scenic Artists, Local 829.

### P. Jason Yarcho...*Musical Director*

Jason is proud to return for a second season at TLLOTS as musical director. Last season he was one of two musical directors conducting our productions of *The Boy Friend* and *Where's Charley?*. Since then, he also served as musical director for our Christmas show, *It's Always Time for Christmas*, and recently, our acting student's production of *Once on This Island, Jr.* He is a recent graduate of Eastern Illinois University where he received a degree in Piano Performance. While at Eastern, Jason won the EIU concerto competition two years in a row playing Gershwin's Concerto in F and Tchaikovsky's 1<sup>st</sup> Concerto in Bb minor with the EIU symphony orchestra. He was also voted best performer by the EIU faculty the past two years. Following this season at The Little Theatre On The Square, Jason will leave the cornfields (Finally!) and head to New York City to continue working in professional musical theatre.

The Little Theatre On The Square  
thanks all our playbill advertisers for  
their support. It is appreciated.  
Please remember them with  
your patronage.



Insurance Agency, Inc.

13 South Main Street  
Sullivan, IL 61951  
(217)728-2323

113 South State Street  
Monticello, IL 61856  
(217) 728-2182

Website:www.cfins.com

*Enhancing the present,  
securing the future.*



Mon. - Thurs.	5:00 am - 1:30 pm
Friday	5:00 am - 7:00 pm
Saturday	5:00 am - 11:00 am
Sunday	5:00 am - 1:30 pm

We can accommodate groups and provide catering for private parties, either in our restaurant or at any other location.

**Phone: 217-728-9595**

*Reservations Accepted*

Located next to The Little Theatre  
On The Square

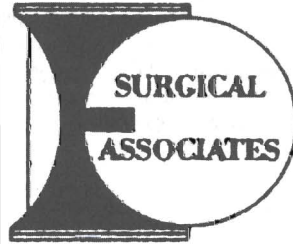
# HARDWARE STATE BANK

*An Unusual Bank Name With  
Unusually Good Service*



**Hardware State Bank**

102 W. State, Lovington, Illinois 61937  
873-4313 • Member FDIC



**EFFINGHAM SURGICAL ASSOCIATES, S.C.**

Ruben Boyajian, M.D., F.A.C.S.  
Kevin Malone, M.D., F.A.C.S.

*General, Thoracic & Vascular Surgery  
Gastrointestinal Endoscopy • Laser Endoscopic Surgery  
Surgical Oncology • Breast Care Center*

900 W. Temple • Suite 101  
Effingham, IL

Phone: 217-347-2500



---

---

# Musician Profiles

## Darrell Aydelott

After playing the reed book for *It's Always Time for Christmas* in December, Darrell Aydelott is glad to be back in the orchestra pit for another show at The Little Theatre. Since retiring in 2000 from twenty-eight years of teaching at Cerro Gordo Elementary School, he now finds time to participate in a variety of musical activities, including the Decatur Municipal Band; the Sande Hackel Orchestra; and the concert band, orchestra, and wind ensembles at Parkland College. Darrell can often be found in orchestra pits playing clarinet and other woodwind instruments for the Champaign-Urbana Theatre Company, the Parkland College Theatre, and the Springfield Muni Opera.

## Bryan Chesi

Mr. Chesi comes to The Little Theatre On The Square from Charleston, Illinois. He is a senior undergraduate jazz studies and music education major at Eastern Illinois University. Bryan has been an active performer in the Eastern Illinois Jazz Ensemble, and Jazz Combos. He also plays in the EIU Wind Ensemble. While not playing music, he works as a recording engineer in the EIU Acoustic Recording Studio. Before attending Eastern Illinois University, Bryan was a resident of Lombard, Illinois. He started playing the clarinet at age ten, and the saxophone at age thirteen.

## Elaine Fine

Elaine Fine began musical life as a violinist, but received a Bachelor of Music Degree in flute performance from The Juilliard School of Music. She studied recorder in Vienna, baroque flute in Boston, and composition at Eastern Illinois University. She is on the reviewing staff of the American Record Guide, is the program annotator for the New Philharmonic, plays in the Eastern Symphony Orchestra, teaches at Lake Land College, and is a member of the Downstate Strings. Ms. Fine has over 60 pieces of chamber music published by the Seesaw Music Corp. in New York, and has written three operas, the most recent of which is an opera based on Howard Zinn's play *Emma*, which is available through the Emma Goldman Papers at the University of California, Berkeley.

## W. David Hobbs

Dr. W. David Hobbs is Professor of Piano at Eastern Illinois University. He has performed extensively throughout the US as soloist and chamber musician. He has also accompanied former LTOTS musician Brian Shaw in trumpet competitions in Paris and Manchester, England. David's students are consistently top prize and concerto winners at EIU and he has recently won a Faculty Achievement Award. David lives in Sullivan with his wife Lynn and daughter Leslie.

## Kara Huber

Kara Huber, a native of Oakland, Illinois, is a senior piano major at the Interlochen Arts Academy in Michigan. A student of Dr. Michael Coonrod, Kara has accompanied high school musicals since the age of 10 and is pleased to now be a part of The Little Theatre. Most recently, Kara performed with the Interlochen String Orchestra and placed in the Michigan Music Teachers' Association Piano Concerto Competition playing Rachmaninoff's 2<sup>nd</sup> Piano Concerto. Now at age 17, Kara accompanies some of Interlochen's best voice majors and ballet classes. She also plays for weekly masses at the Newman Catholic Center in Charleston, IL. Kara is interested in attending the Manhattan School of Music or the Oberlin Conservatory of Music and hopes to pursue a career as a concert pianist.

Kurt & Mara  
Van Deursen

**ACE**  
Hardware

**RadioShack.**  
You've got questions. We've got answers.

•Sporting Goods • Camping • Gifts  
7 a.m. - 7 p.m. Mon. - Fri. • 8 a.m. 6 p.m. Sat. • 12 - 4 Sun.

Johnstown Mall  
Shelbyville, Illinois 62565  
(217) 774-2723

Lakelander Plaza  
Sullivan, Illinois 61951  
(217) 728-4100

**Jerry's**  
**IGA**

- FRESH BAKERY
- DELI
- PRODUCE
- MEAT

**HOMETOWN PROUD.**

431 S. Hamilton • Sullivan  
Open 24 Hours • 7 days a week



**MAIN STREET**  
BANK & TRUST™  
*It's about you!*

200 West Main Street, Shelbyville  
217.774.5515  
www.mainstreettrust.com



**Anderson Electric**

BLOOMINGTON • DANVILLE • MATTOON • SPRINGFIELD

Electrical Contractors Serving Commercial,  
Data Com, Health Care, Industrial and Power  
Generating Customers Since 1918.

1921 Oak Ave, Mattoon, IL 61938  
Ph. 217-234-7476

Robert J. McClain, Vice President/Mattoon  
www.anderson-electric.com



**RE/MAX**

**Crossroads Realty**  
Independently Owned and Operated  
Jeffrey K. Speer, GRI  
Broker/Owner



611 West Fayette Ave., Effingham, Illinois 62401  
Office: (888) 345-0404 • Fax: (217) 347-0498  
Mobile: (217)821-8144 • Residence: (217) 347-2904  
Email: jeffspeer@effinghamrealestate.com



**SULLIVAN**  
**CIVIC CENTER**

P.O. Box 145  
600 N. Washington, Sullivan, IL 61951  
Fax • 217-728-8717  
Phone • 217-728-4541

**Complete Swimming, Fitness &  
Recreational Facilities**



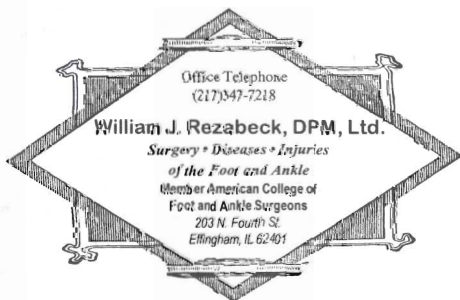
**48**  
**STELLAR**  
**SEASONS**



*BEST WISHES TO  
THE AUDIENCE, CAST AND CREW*

**A B SEALS, INC.**

Manufacturer of Sealant and Job Shop for  
Vacuum Pressure Impregnation for porous castings  
*Our 37th year in Sullivan!*



Office Telephone  
(217)347-7218

**William J. Rezabeck, DPM, Ltd.**

*Surgery • Diseases • Injuries  
of the Foot and Ankle  
Member American College of  
Foot and Ankle Surgeons  
203 N. Fourth St.  
Effingham, IL 62401*

---

---

# Musician Profiles

## Joseph Ingolia

Joseph Ingolia, a professional musician for over 20 years, began "on the street" in his native Pekin, Illinois before studying Jazz at the junior-college level. While at Illinois Central College, he studied voice and Jazz Performance under Tubal Holmes and Rich Richardson, respectively. Mr. Ingolia tightened his focus on the Jazz idiom while studying under Henry Butler, John Miller and Sam Fagaly at Eastern Illinois University. During this time, he conducted extensive field work as part of an Indie Rock combo. Currently, Joseph works with Champaign, Illinois' *The In Your Ear Big Band* under the directorship of Dr. Peter Roubal, D.M.A. The flagship project for Mr. Ingolia is the nine-piece R and B combo, *Tons O'Fun*. It contains several veteran players from the Urbana-Champaign area, most notably, Pauli Carmon of the chart-topping group, *Champaign*. Joseph is also currently pursuing a Master's Degree in Jazz Performance at Eastern Illinois University. Mr. Ingolia worked under Bryan Underwood on TLTOT's production of *Grease* during the 2003 Summer Season.

## Terence Mayhue

For the past five years, Terence has been at Eastern Illinois University as an instructor of Percussion and General Education Lecturer. Mr. Mayhue writes and arranges for, and is director of, the EIU World Percussion Ensemble, EIU Concert Percussion Ensemble, and the Mid-West Funk Factory. His compositions and arrangements for Percussion Ensemble and Marituba Orchestra have been performed by several university programs across the country. He received his B.A. in Music Performance from Millikin University, his M.A. in Music Performance from Eastern Illinois University, and is currently working on his DMA at the University of Illinois. He has performed on numerous professional recordings and is currently the studio percussionist at "The Third Stone Productions" in Decatur, IL. He has been the Principal Percussionist for the Danville Symphony Orchestra for the past eight years and occasionally substitutes for the Champaign Symphony Orchestra. Mr. Mayhue is very active as an instructor of several drum-lines and is constantly sought after as a percussion clinician and commercial performer throughout the Midwest. Mr. Mayhue is an active member of the Percussive Arts Society and is currently endorsed by Innovative Percussion.

## Christopher Mroczek

Christopher Mroczek comes to The Little Theatre On The Square on the verge of finishing his bachelor's degree in Music Education from Eastern Illinois University. He has been playing clarinet for twelve years. Last year, Christopher was the principal Clarinet player in both the Eastern Symphonic Wind Ensemble and the Eastern Symphony Orchestra. In this upcoming year, he will be one of three drum majors for the Panther Marching Band. In addition to his ensemble activities, Christopher is the chapter president of EIU's Inner-Collegiate Music Educator's Association. Last April, Christopher was awarded the Leo J. Dyorek scholarship and named the Music History student of the year. Christopher wants to teach music at the high school level upon completion of his bachelor's degree.

## Ed Schaller, Jr.

This is Ed Schaller's first time playing with Sullivan's Little Theatre On The Square, but not his first musical. Ed has played in numerous productions for both Parkland College and the Champaign-Urbana Theatre Company including *Assassins*, *Sound of Music*, *1776*, and *Cabaret*. Ed is currently working on a DMA in Jazz Performance at the University of Illinois and is happy to finally be doing a show for The Little Theatre.





**Moultrie County Beacon, Inc.**  
Lighting the way for people with disabilities

- \* Developmental Training
- \* Medical Services Unit
- \* Early Intervention
- \* Workshop
- \* Residential (CILA) Services
- \* Case Management

*This agency is a private, non-profit  
CARF Accredited Rehabilitation Facility*

401 West Water  
P.O. Box 406  
Sullivan, IL 61951  
217/728-7396

[www.mcbeacon.org](http://www.mcbeacon.org)



Division of Mid-State Industries  
908 Bob King Drive • Arcola, IL  
217-268-3900 • 888-705-3900  
*Your source for structural steel.*




**TAKE A SEAT AT THE DEPOT**

Hours:  
Mon.- Fri. 10am to 5pm  
Saturday 10am to 3pm  
Ice Cream Shop also open:  
Sunday 6pm to 9pm


*Deli Sandwiches  
Delicious Desserts*

- Abby & Ally's Ice Cream Shop
- Maddie's Coffee Shop
- Gift Shop

102 N. Washington • Bethany, IL 61914  
217-665-2211



Primitives • Country • Colonial Cottage



Relax to soothing music and enjoy our many charming settings and ever changing displays of home accents, florals, pine painted furniture, linens, candles and decorative accessories.

917 W. Harrison • 217-728-2725 • Mon.-Sat. 10-5  
*West end of Sullivan • Same street as The Little Theatre*

**WOOD & MAYBERRY**  
*Attorneys at Law*

Steven K. Wood  
Steven W. Mayberry

200 West Harrison  
Sullivan, Illinois 61951  
Telephone: 217-728-7369  
Fax: 217-728-4781

McMullin~Young is proud to play a part in supporting the arts in our community.

**McMullin~Young**  
Funeral Homes, Ltd

Our Family Serving Your Family Since 1856

Licensed Funeral Directors      Three convenient locations:

Don Young	Bethany
Mack Young	Lovington
	Sullivan

503 West Jackson Street Sullivan, IL 61951  
217-728-4309



**Sullivan Prairie  
Miniature Golf**

the newest minigolf course in the area offering 18 holes of fun and entertainment for the entire family.

We are conveniently located on Illinois Route 32 on the south edge of Sullivan.

Discount not valid with any other offers or discounts and expires end of our 2005 season.  
(217) 728-9339

Show 2005 Little Theatre Ticket Stub and Save 20% Per Person In Party  
Check us out at [www.spminigolf.com](http://www.spminigolf.com)

---

# Production Company Profiles

## Holly Ashcom...*Wardrobe Mistress*

Holly Ashcom is a native of Montgomery, AL, and a graduate of Mississippi State University. Before coming to The Little Theatre On The Square she was the Costume Design Intern at Playhouse on the Square in Memphis, TN. Her design credits there include *No Niggers, No Jews, No Dogs, A Man of No Importance, Charlotte's Web, Floyd Collins*, and *It Ain't Nothin' But the Blues*. Prior to that she was the lead costumer for the Midwest tour of Nebraska Theatre Caravan's *A Christmas Carol*. Holly is thrilled to be working with The Little Theatre this summer.

## Walter Beals...*Sound Engineer*

Walter was recently awarded a Master of Arts degree in Theatre Production at Humboldt State University in Arcata, CA—the same university from which he received his BA in theatre. As part of his graduate program, Walter completed a one-year program at Circomedia, the Lecoq based school of physical theatre and circus arts in Bristol, England. As a theatre artist, Walter has a wide spectrum of skills and experiences such as directing, choreography, performing, graphic arts, prosthetics and special effects makeup, stage management and sound design. Walter's true love, when it comes to the theatre arts, is making masks, physical theatre, and the art of object manipulation (juggling!). Walter's future plans involve opening a circus arts school in Northern California.

## Jason Dodough...*Carpenter*

Jason Dodough, a skilled 25 year old, is excited to be a part of such a historical establishment as The Little Theatre. He has been involved with theater and productions since elementary school in Palm Desert, CA, where he performed in *The Shooting of Dan McGrew*, choreographed by Jacques Domboise. In later years, Jason was a floor director for a local ABC news station in the Palm Springs area and was a member of the stage crew for *The Fabulous Palm Springs Follies*, which featured such names as Howard Keel, Kay Star, and Frankie Lane. Jason would like to thank everyone that has been supportive of his choices throughout his life, and hopes that many opportunities such as The Little Theatre present themselves further down the road in his career.

## Ben Edwards...*Master Electrician*

Ben Edwards is glad to be back at LTOTS as the Master Electrician. Last summer Ben was one of the carpenters in the scene shop at the LTOTS. Currently Ben is going to school at Illinois State University to pursue a B.S. in Theatre Design. Working on shows like *Metamorphoses, Marisol, Moon For The Miss Begotten*, and the *Fall Dance Concert*, Ben is making good headway within the ISU School of Theatre. Recent credits include lighting designer for LTOTS's dance concerts *Let's Dance* and *That's Entertainment*. Other lighting designs at the LTOTS include *Footloose, Music Man Jr., The Shakespeare Showcase*, and *Uncool*. Assistant designer credits include *Jekyll and Hyde* (LTOTS), *Carousel* (Mesa Community College, AZ), *The Sound of Music* (Gilbert Fine Art, AZ), and the west coast premier of Theatre Mitu's *The Ramayana* (ACT, San Franco). Currently Ben is an apprentice with Theatre Mitu, for lighting and scenic design. In the winter, Ben will be Assistant Lighting Designer for anythecycle: *Dharmashok* and *Opheliemachine*, two new works by Theater Mitu.

## Daniel Jones...*Technician*

Daniel is glad to be back for his third year at TLTOTS. He is from Cadillac, Michigan, and moved to Illinois for school. He is a student at Eastern Illinois University and is majoring in Radio/TV Production. When he is not attending school or at the Theatre, you will find him enjoying his time off with his daughter Brooklyn and his girlfriend Rachel at home in Mattoon. Daniel thanks the Theatre for this opportunity to continue his career with them, and his parents, grandparents, friends and family for their ongoing love and support.

# REACH FOR THE STARS... FOLLOW YOUR DREAMS



Presented by  
Little Theatre On The Square

## DRAMA CLASSES

### Classes for ages 3 to adult:

- \* Creative Drama
- \* Tools for the Stage
- \* Improvisation/Scene Study
- \* Tools for On-Camera
- \* How to be a Working Actor
- \* Production Performance



## DANCE INSTRUCTION

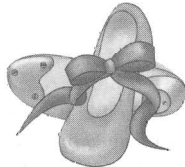
### Classes for 18 month to adult:

Mommy and me (18 months to 3 years)

- \* Intro to Dance (3 to 5 years)
- \* Kindergarten Tap

### Beginning to advanced classes in:

- \* Ballet/Pointe
- \* Tap
- \* Boyz Tap
- \* Jazz
- \* Funky Jazz
- \* Hip-Hop
- \* Lyrical Jazz
- \* Musical Theatre Dance for High School
- \* Adult and High School Tap



Registration for dance and drama classes will be August 19 and 20, 2005.

Classes begin:  
September 12, 2005

For more information, please contact Marie Jagger-Taylor, Director of Education at The Little Theatre On The Square, 217.728.2065 or email at [marie@thelittletheatre.org](mailto:marie@thelittletheatre.org)

Please contact Stacy Walker by phone at 217.728.2065 or email at [stacy@thelittletheatre.org](mailto:stacy@thelittletheatre.org) to schedule a booking for the Touring Production. Productions appropriate for grades K through 9.

This program is supported by a grant from the Illinois Arts Council.

## TOURING PRODUCTIONS AND WORKSHOPS

Professional actors come to your school with costumes, sets and props and dazzle students and teachers alike. Currently available to area schools for bookings during the 2005-2006 school year are productions of *The Sword and the Stone* and *The Knights of the Roundtable*.



---

---

# Production Company Profiles

## **Sarah Kattau...*Master Technician***

Ms. Kattau is excited to be joining The Little Theatre On The Square this summer, having just completed her junior year in college. Hailing originally from the farm land outside Indianapolis, Indiana, she moved to St. Louis University in Missouri three years ago to pursue a degree in technical theatre. Favorite shows she's worked on so far include *My Fair Lady* (master carpenter), *Picasso at the Lapin Agile* (master electrician), and *Rumors* (assistant technical director) at St. Louis University, as well as assistant lighting designer for *Macbeth* at the St. Louis Black Repertory Theatre.

## **Adam Liston...*Production Manager***

Adam grew up in the deserts near Palm Springs, went to school amid the giant coastal redwoods, commuted the traffic horrors of Los Angeles, and somehow ended up moving to the cornfields of Illinois. A graduate of Humboldt State University, Adam has been a professional theatre playwright, director and designer for the past eight years with numerous theaters around California before relocating to Sullivan last year. His past design work at TLTOTs has included - *Same Time Next Year*, *Pump Boys*, and *Once on this Island, Jr.* He would like to thank Erin for her support, love, and putting up with the insanity of the theatre lifestyle.

## **Katy McGlaughlin...*Assistant Stage Manager***

Katy McGlaughlin is pleased to be joining the staff at The Little Theatre On The Square. She just finished her freshman year at Webster University in Saint Louis where she is pursuing a BFA in theatre with an emphasis in Stage Management and a second emphasis in Technical Direction. She would like to thank her Mom and Dad for all of their love and support, and all the kids from "Camp Lyceum" who taught her so much, especial Tony, Amy, Robert and Guss. She would also like to thank Jim for all his love and all those late nights drafting. God Bless and Enjoy the show.

## **Loren Pratt...*Master Carpenter***

Loren Pratt is back, ready for another radical summer at The Little Theatre On The Square after spending two years in Mesa, Arizona at the prestigious Prather Family of Theaters' Broadway Palm West as a carpenter and a Sound and Light Technician for such hit shows as *Miss Saigon*, *Cats*, *Honk!*, and the ever popular *Holidazzle*. Loren is currently involved at the Brewery Arts Center in Carson City, Nevada helping to remodel their new performing hall. Loren is very proud to return to The Little Theatre as Master Carpenter and dreams of one day attending college for his B.A.

## **Jenn Scheller...*Scenic Painter***

Jenn is a freelance artist from Newburgh, Indiana. Since graduating from Ball State University in 2003, she has been a nomad artist painting her way throughout the eastern part of the country. Her work has been displayed in various venues including: Kennywood, The Charles W. Wright Museum of African American History, as well as The International Auto Show's Jeep Exhibit in New York City, Chicago, and Detroit. Thank you and goodnight.

## **Katie Schmidt...*Costume Shop Foreman***

Katie Schmidt is so excited to be spending her first summer job experience with The Little Theatre On The Square. Katie attends Northwest Missouri State University and will be a graduating senior next year. She is a technical theatre major with an emphasis in costume design.

# The Little Theatre On The Square...

## Through The Years



This year The Little Theatre will celebrate its 48th year bringing live performances to the prairie. Last year, the extensive renovation project was completed offering a beautiful updated, expanded facility in which to enjoy the arts.

Founded by Guy S. Little, Jr., a man who was fulfilling his lifelong dream to operate a quality professional theatre, The Little Theatre On The Square first raised its curtain in 1957 for a lively performance of *Brigadoon*. Mr. Little ran the theatre as a commercial venture through 1978. During that time more than 175 famous stars performed on its stage, including Mickey Rooney, Alan Alda, Ann Miller, Don Ameche, Betty Grable, John Carradine, Ann Southern, and Forrest Tucker.

After 22 years of producing outstanding theatre in Sullivan, Mr. Little moved on to pursue other ventures. In 1981, The Little Theatre On The Square began operating as a not-for-profit corporation, governed by a Board of Trustees who represented its regional market area in Central Illinois.

The Little Theatre On The Square, Inc. later purchased the theatre building from Mr. Little. The following year it purchased and renovated the adjoining building for its ticket office, public restrooms and administrative offices. The theatre continued to grow, and added amenities for its patrons and production company. In 2000, the theatre purchased another building for rehearsal space, a dance studio, and apartments to house the company. Another building was purchased in 2001 and converted into a technical production facility.

In 1997, the theatre, in cooperation with the City of Sullivan Civic Center, started an educational outreach program to cultivate theatre arts. It began by teaching jazz, tap and ballet. In 2001, drama classes were added. The outreach program now has over 275 students.

In January, 2004 the educational outreach program added a touring program called S.T.A.R. which stands for Students Theatre Arts Reach. Taking a play on the road, S.T.A.R. offered their performance to area schools. This spring, S.T.A.R. toured two productions and reached over 26,000 students.

Since 1981, The Little Theatre On The Square has played to well over 600,000 admissions, including over 130,000 admissions to the Theatre For Young Audiences series.

We hope you enjoy The Little Theatre for many years to come!

---

---

# Production Company Profiles

## Megan S. Stadick...*Deck Electrician*

Ms. Stadick has recently completed her sophomore year at Millikin University in Decatur, IL, where she is pursuing a B.F.A. in Theatre Design and Technology, with a double major in Art. She has designed lights for Equinox 2005, Millikin's annual dance concert and she will also design for *Stop Kiss* at Millikin next fall. Some of her other credits at Millikin University include master electrician for...*And They Dance Real Slow in Jackson*, assistant master electrician for *Damn Yankees* and *A Little Night Music* and also paint charge for *Much Ado About Nothing* and Millikin's 2005 operas. She calls Bolingbrook, IL home, but can't wait to travel and take on the world of theatrical lighting.

## Sarah Marie Stark...*Stitcher*

Sarah Stark was born in Anchorage, Alaska. She is the recipient of an Associates of the Arts degree from Manatee Community College in Bradenton, Florida. She will complete a Bachelors of Fine Arts Degree in Costume Design from the University of Florida in December 2005. Ms. Stark plans to attend graduate school in the fall of 2006 to obtain a Masters of Fine Arts degree in the discipline of costume design.

## Dana Stremming...*Props Mistress*

Dana Stremming is happy to be back at The Little Theatre On The Square after working as an Assistant Stage Manager for the Christmas production *It's Always Time for Christmas*. Previously, Dana worked in the Parkland College Theatre while attending as the 2003-2004 Randall Millas Scholarship recipient. Her next big move is to study Marketing Communications at the University of Illinois. Dana would like to thank Randi, Dave, and Dallas and the rest of the PCT crew for their guidance; Leonard, Adam, Stacy and the rest of The Little Theatre crew for this opportunity; and, all of her friends and families (one and two) for their support, ears, and love. Will you look at those props?!

## Stacy L. Walker...*Company Manager/Stage Manager*

Stacy Walker is excited to be a part of her third summer season at The Little Theatre On The Square. Stacy has a BFA in Theatre from Emporia State University in Emporia, KS. During the school year Stacy works full time as the Assistant Director of Education at The Little Theatre On The Square wearing many hats in association with the S.T.A.R. Touring Production dedicated to bringing Theatre to schools throughout Central and Southern Illinois. Before working at The Little Theatre On The Square she was Artistic Director at Kids Matter National Theatre, Inc. and Properties Mistress at Utah Musical Theatre. Stacy would like to again take the opportunity to thank her family and her amazing friends who are also her family for their unwavering support and sense of stability they lend to her life.

## Emily Wilson...*Assistant Stage Manager*

Born and raised in Carlyle, Illinois, Emily Wilson is excited to be joining the cast and crew at The Little Theatre On The Square for her first season. Emily comes to us from Southeast Missouri State University where she is a senior studying Theatre and Advertising. In college she is very involved in the theatre department where she enjoys acting, dancing, stage managing, and working in the box office. Emily is looking forward to her experience at The Little Theatre On The Square.



# Put

## The Little Theatre On The Square in your will.

Leave your legacy by remembering your favorite nonprofit organizations in your will or estate plan. Every dollar you leave to a local organization benefits your community...helping make life better for family, friends, and neighbors.

If you don't have a will, get one. If you do, think about including your favorite nonprofit groups or religious organizations. For more information, call your financial or legal advisor today.



[www.dosomethinggreat.org](http://www.dosomethinggreat.org) | 217.429.3000

---

---

## Administrative Staff Profiles

### **Erin Denney**...*Ticket Office Assistant*

It's Erin's second summer in the box office of The Little Theatre On The Square and she is proud to now call Sullivan home. She's looking forward to another great season of performances and welcomes the returning and new guests to the theatre.

### **Arlene Denning**...*Ticket Office Manager*

Arlene returns to The Little Theatre On The Square for her 17th season. In the real world, she is an elementary teacher at Lovington Grade School. After school, she continues teaching at Sullivan Pre-school. Between her busy schedule and the schedule of husband John, she hopes they can coordinate their free time and "get away" a little.

### **Laura Elder**...*Ticket Office Assistant*

Laura Elder is always glad to switch from planning lessons and grading papers for fourth graders at Sullivan Elementary to taking reservations and helping patrons at The Little Theatre. Another great part of the job is working with Miss Becky and the other staff. When not working, Laura enjoys reading, antiquing, and shopping.

### **Lori Harbaugh**...*Business Manager*

It's hard to believe, but this year marks Lori's 23rd season with The Little Theatre On The Square. She is a lifetime resident of Sullivan who has been known to show up on stage from time to time. These days she's more likely to be found in her office shuffling mounds of paperwork, ensuring that things continue to run smoothly behind the scenes. Her performance bug has been satisfied for the last nine years by her work with "The Prairie Winds", a local group who entertains weekly at area nursing and retirement homes. Lori wants to send a huge "thank you" to her wonderful, dedicated box office staff for their loyal support and hard work over the years. We couldn't do it without you!

### **Cheri Mayberry**...*Marketing Director*

This is Cheri's first season with The Little Theatre. Since starting with the theatre in February of this year, she has been settling in to her new position and getting acquainted with Sullivan. Cheri is a Central Illinois native and is in a minority of people who actually enjoys the prairie winters. Having previously worked more than eleven years in the tourism industry, she is happy to be back in the field. She wants to thank everyone associated with the theatre for making her feel so welcome and bearing with her as she learns all about "the business". Enjoy the show everyone!

### **Donna Newcome**...*Administrative Assistant*

Donna is glad to be back for her second season at The Little Theatre. It's going to be a great year. Break a leg!

---

# Administrative Staff Profiles

## Jill Seelhoef...*Ticket Office Assistant*

Jill is happy to be returning to the box office staff for her seventh year. She is currently attending Eastern Illinois University where she is majoring in Biology and will be graduating next spring! She still enjoys singing in various choirs and playing the piano in her spare time. Jill looks forward to another great season, and hopes that you enjoy the show.

## Lara Seelhoef...*House Manager*

Lara returns to The Little Theatre as the House Manager for the third year. She has been with the theatre since fifth grade as both an usher and a performer in *Joseph and the Amazing Technicolor Dreamcoat*. As a senior at Sullivan High School, she is very involved in the Sullivan Singers Show Choir, basketball, Student Council along with a Leadership group. Last year she was privileged to play Sarah in their high school musical, *Guys and Dolls*. She enjoys hanging out with her friends, and spending quality time with her sister at work. This summer she hopes that everyone will enjoy the experience of Broadway in Sullivan.

## Marissa Reedy...*Ticket Office Assistant*

Marissa is glad to be a part of the box office this year. She is a Junior at the University of Illinois in Champaign-Urbana majoring in Elementary Education. When Marissa is not cheering on the Fighting Illini Men's Basketball team as part of the Orange Krush, or planning the annual "Spring Showdown" cattle show for the Hoof n Horn club, she enjoys the outdoors, reading, and shopping.

## Becky Zimmerman...*Ticket Office Manager*

Becky gives her box office ladies, house manager and ushers many thanks and much appreciation for their hard work in keeping the ticket office humming along. The Little Theatre On The Square couldn't fill the house without you!





# Applauding the Past—Directing the Future

We want to salute the many generous donors to our **Capital Campaign**. Through their support, The Little Theatre On the Square is able to continue the tradition of live, professional theatre in Central Illinois, as well as expand its offerings through its Educational Outreach programs. Each of you has our deepest appreciation for making this longtime dream come true!

## Encore Society

**\$200,000 +**

Archer Daniels Midland Company  
State of Illinois

## Producer's Society

**\$100,000–\$199,999**

City of Sullivan  
Consolidated Communications

## Director's Society

**\$50,000–\$99,000**

Agri-Fab  
First Mid-Illinois Bancshares, Inc.  
Hydro-Gear  
Dr. James K. & Karen S. McKechnie

## Designer's Society

**\$25,000–\$49,999**

Anonymous Board Members  
Ken & Deb Best

## Choreographer's Society

**\$10,000–\$24,999**

ADM Foundation  
Charles & Linda Adams  
Anonymous Donors  
Bank One  
First National Bank of Sullivan  
Nina & Philip Martin –  
    In Honor of Art & Mamie Palmer  
Gary & Tess Melvin  
Mervis Industries, Inc.  
Parke Warehouses  
Tami & Don Robinson  
Scott State Bank  
United Graphics, Inc.  
Ron & Sharon White

## Actor's Society

**\$5,000–\$9,999**

A.E. Staley, Jr. Foundation  
Leonard & Carol Anderson  
John & Carol Benda  
Steve & Debbie Benefiel  
Dr. Joseph & Christine Borreggine  
Central Illinois Physical Therapy  
Bob & Cathy Hagen  
Jon & Jo Ann Laible  
David & Mary Martell  
Wayne & Patti Meinhart  
Pearman Pharmacy, Inc.  
John Schultz Family  
Sam & Barb Scott  
Jimmy T. & Kathryn L. Stewart  
Mary L. Storm

## Spotlight Society

**\$1,000–\$4,999**

American Express Foundation  
BKD, L.L.P.  
Dr. Tom & Emilee Best  
Christopher Bracken  
Dick & Sue Ann Cain  
Charles & Donna Coffey  
Bruce & Mary Beth Condill  
Gery & Cheryl Conlin  
Kevin & Bonnie Corley  
Steven K. Foglia  
Don & Carolyn Hackerson  
Les & Ellen Hall –  
    In Memory of Kay Kimery  
Marty & Lori Harbaugh  
Hardware State Bank  
Tom & Peggy Hargis  
Sisters/Bud & Pam Harris

*continued on page 49*

# Applauding the Past—Directing the Future

## Spotlight Society *continued*

Dr. Mack & Margaret Hollowell  
Holmes, Radford & Avalon, Inc.  
Don & Pam Jesse  
Mary Ann & John Koucky  
Mr. & Mrs. Michael Martin  
McMullin-Young Funeral Home  
Charlene Oberlin  
Bob & Lana Pancoast  
Mary Lou Randolph  
Reed Funeral Home, Ltd.  
M. Seth Reines  
Otto & Lisa Rincker  
William S. & Kathleen Rowland  
SBC Foundation  
The Samuel Family Foundation  
Mr. & Mrs. Dennis Sandschafer  
Marilyn Sears  
Dallas & Nancy Seitz  
Siemer Milling Company  
Henry M. Staley Charitable Trust  
Rick & Cindy Steward  
Lew & Patty Stiff  
Jim & Judy Yockey

## Center Stage Society \$500-\$999

Schenck & Margaret Brooks  
Michael Fortner & Leanne Bates  
C. Michael & Beth A. Hewing  
Anne Higley & Eric Benson  
Robert L. Hills –  
    In Memory of Patricia Lowe  
John & Suzanne Lechman  
Tom & Mary Little –  
    In Memory of E.M. "Buck" Chastain  
Denis & Lori Roche  
Mike & Linda Sullivan  
Troy & Patti Swinford  
Richard & Linda Voltz

## The Chorus Society \$250-\$499

Anonymous Donors  
Rich & Sharon Buckler

## The Chorus Society *continued*

Mr. & Mrs. Merle W. Chapman  
Buck & Shana Condiil  
Bob & Nancy Elder  
First Neighborhood Bancshares, Inc.  
Don & Jan Grewell  
Mr. & Mrs. Richard L. Hettinger  
Mary Lou Hubbard & Don Dawson  
Dennis & Mary Hutchings  
Irwin Telescopic Seating Company  
Juanita E. Jennings  
Bob & Debi Johnston  
Claire Krukenberg  
Jeanne & Fred LaBree  
Jan & Lee Lauderdale  
Henry & Dianne Merz  
In Memory of Beth Moss  
Nancy Newell  
Marilu S. Platzbecker  
Paul & Anna Jane Sager  
Mabel E. Shuman  
Ada T. Songer –  
    In Memory of E. Lowell Songer  
Russ & Marge Stark  
David & Linda Sudkamp  
Ron & Sandra Ware  
Watts Copy Systems  
Mark & Debbie Vandermyle  
Verizon Foundation  
Betty E. Zeaman  
Becky & Claire Zimmerman,  
    Ruth (Zimmerman) Kampwerth

## The Extras \$10-\$249

Anonymous  
John & Cathy Anderson  
Lyetta Awalt –  
    In Memory of Fred L. Awalt  
Cathy Babbs  
Randy & Marcy Baird  
Roger & Eileen Baker  
Mr. & Mrs. Gene Barkley  
Norma Jean Barnard

*continued on page 50*

# Applauding the Past—Directing the Future

## The Extras *continued*

Ronald & Carol Batterham  
Joan Beetle  
Doug & Sally Bock  
Mildred & Wayne Bohlen  
George & Winona Bolinger  
James & Leona Bolles  
Mark & Carol Bomball  
Jim & Marlene Bray  
Jerry & Gail Brenner  
Tom & Jackie Brinkoetter  
Sally & David Brown  
Don & Gerry Brown  
Helen Brown  
Howard & Helen Brown  
David & Ellen Bruce  
Carl & Shirley Bruegger  
Mike & Vicki Budde  
Warren & Jo Burgard  
Larry Cannon  
Don & Joan Carnes  
Norma Jean Carter  
Gail Casey  
Clara L. Clark  
Ed & Mary Lou Cookson  
Carl & Janice Cox  
Walter & Mary Dannewitz  
Beverly Dean  
Mary Beth Dedman  
The DeLong Family  
Donald G. & Karen Doty  
Marilyn Dufford  
Chuck & Sharon Eberly  
Fay Eddings  
J. Andrew Edwards  
Duane & Beverly Ehler  
Eleanor Elliott  
Judy Enis  
Esther Fessant  
Dale & Judy Ford  
Todd & Vicky Foster  
Gateway Wagoneers  
Jim & Jerry Geekie  
John R. & Sandra A. Geis  
James Neil Gentry  
Michael & Melanie Gibala

## The Extras *continued*

GlaxoSmithKline Foundation  
Barbara A. Glover  
Pauline W. Goldstein  
Cindy Gollus  
Patricia A. Graven –  
    In Memory of William G. Graven  
Dr. William & Susan Grieve  
Mike & Linda Grose  
Barbara Hall  
Jim & Leigh Hammer Family  
Bob Hantel  
Bob & Glenda Harris  
Ron & Nedra Hash  
Elmer & Virginia Hawkins  
Bill & Susan Seaforth Hayes  
Hefner, Eberspacher & Tapella –  
    Attorneys at Law  
John & Bonnie Hefner  
Henry Heiland  
Karen S. Heintzelman  
Isabel Henderson  
Ramona Henricks  
Dean & Veva Henson  
James & Florence Holaday  
Joyce Holste  
William & Selma Horton  
Leon & Karen Huffmaster  
Bob & Laura Hussey  
Dorothy Jackson  
William Michael & Jacqueline Joines  
Ben Jones  
Shirley & Robert Karraker  
Mike & Ruth Keown  
Thomas & Rebecca Kerkhoff  
Mr. & Mrs. Hayden Kessinger  
Walter & Marlene Kincaid  
Daniel & Laurie King  
Susie Kircher  
Ralph & Donna Kobitter  
Jim & Lillian Korous  
Kathleen Kunzeman  
Tod & Marge Lancaster  
Dorothy A. Langford

*continued on page 51*



# Applauding the Past—Directing the Future

## The Extras *continued*

Norma Lansing  
Sandra Laurup  
Mr. & Mrs. Howard Lawrence  
Carl Lebovitz –  
    In Memory of James K. Lively  
Robert & Trudy Lewis  
Robert L. Lewis  
Beryl A. Linders  
Donna Livingston  
Mary Jane Lock  
Charles Lunceford  
Diane Mackey  
In Memory of Bill Madden  
Nancy Mains  
George & Marion Marquis  
Jack & Margaret McCoskey  
Doug, Kelly & Megan McDevitt  
Virginia McKinney  
Eleanor Means  
Janet Meier  
Michael & Dorothy Merry  
Joyce Miller  
Linda & Michael H. Miller  
Mr. & Mrs. John Richard Mills  
George & Linda Mitchell  
Eleanor Moma  
Betty R. Monroe  
Irene Moody  
Melody Moore  
Pam Morgan  
Judy Murphy  
William & Rose Mary Myers  
Thomas & Jo Ann Niemerg  
Betty Nofke  
Dennis & Judy Ozier  
Barbara Pais  
Lindsey & Linda Parrish  
Ed & Nancy Pazzior  
Kurt & Brenda Pierce  
Doug & Linda Poe  
Leo & Anne Pondelick  
Gene & Joyce Prince  
R.R. Donnelley Foundation  
Phyllis J. Ranney  
Jerry & Marsha Robbins  
Wanda Roberts

## The Extras *continued*

John & Nancy Royse  
Ken & Eva Ruble  
Richard & Yvonne Schroeder  
Mr. & Mrs. Donald L. Scoles  
Florence Seales  
Mr. & Mrs. D.O. Shank  
Lois J. Shelton  
In Honor of Maurice & Rose Mary  
Shepherd  
Mary L. Shute  
Mark & Renee Smith  
Lowell & Theresa Spurgeon  
Rhodell & Gladys Sterchi  
Scott & Jan Stevens  
Arthur & Lois Strom  
Bill & Judy Sumner  
Nancy C. Tennant  
Terry J. Titus  
Janet Tolly  
Cora Ruth Turner  
John & Susan Tynan  
Curt, Peggy, Ashley & Michelle  
Valenti  
Les & Bobbie Vaughan  
Dale & Virginia Vogel  
Todd & Lynelle Wachtel  
Don & Patty Walden  
Sue & Bob Walker  
Sue Weaver  
Jeri Wenberg  
Terry & Robin Westendorf  
Leroy Wetzel  
Mr. & Mrs. Merlin Wetzel  
Bill & Jacque White  
Lulu F. White  
Marjorie P. Whitley  
Russell & Louise Wiley  
Harold & Nadine Wilkey  
Mark & Tammy Willenborg  
Patricia A. Williams  
Craig & Cynthia Wise  
Gilbert & Sharon Wood  
Fay Woodrich  
Cathy Wright  
Jan & David Young  
Dan & Diane Zerrusen

## Adopt-A-Seat Campaign Donors

A big thank you to all our *Adopt-A Seat* donors! If you would like to “adopt” your own seat and have your name included on our special *Adopt-A-Seat* plaque in the lobby, please see the Ticket Office personnel for more information.

Anonymous  
Dale & Donna Arnold  
Mary Anne Barlow  
Marion Best–In Memory of Bob Best  
Roland & Betty Best  
Don & Margie Black  
Kelly Bland  
Carolyn Boblitt  
Mr. & Mrs. Karl Borton  
Alora J. Bowles / Donald W. Dodson  
John & Susan Brosam  
Tom & Kathy Bunfill  
Lloyd A. Bury  
Larry & Carol Bushu  
CF & H Insurance, Sullivan & Monticello  
Jud & Sandra Cameron  
Central Illinois Physical Therapy  
Frank Clinton  
Betty J. Davis  
Greg & Micah Dickens  
Lynn & Nancy Elder  
Ralph C. Elke  
Susan H. Elke  
Charla Bartscht Fischbach  
Richard Fischbach  
Jibby Julio Florini  
Ruth Florini  
Patricia A. Funk  
Betty L. Glasscock  
David & Dawn Grapes  
Mr. & Mrs. Donald Greffe  
Lee & Patricia Griffith  
Don & Carolyn Hackerson  
Felix & Patricia Hagerman  
Mary Ann Hargis  
Barbara Harshman  
Madelyn Harshman  
Dr. & Mrs. Jerry Hastings  
David J. Hellwig  
Margaret C. Hollowell  
Dr. Maria Horvat & Dr. James Kohlmann  
Mary Lou Hubbard & Don Dawson  
Illinois Masonic Home  
Illinois Printing Services, Inc.  
Mark & Ann Jackson  
Ross & Elaine Jett  
Larry & Marty Jones

Mr. & Mrs. Randall Kampfe  
Dr. Philip & Peggy Kepp  
Dick & Robin Kruckeberg  
Kathleen & Thomas LeVeck  
Dr. Larry Leventhal  
Jytte Leventhal  
Mr. & Mrs. Michael Martin  
Ed McCammack  
Melodie McCammack  
Lorin Nevling  
Grace, Gabe & Gillian Oetting  
Jeff & Trina Oetting  
Nancy Penney –  
    In Honor of Norton & Claire Penney  
Leo & Anne Pondelick  
Psi Iota Xi, Theta Psi Bethany  
Mary Lou Randolph  
Joy Rathe –  
    In Honor of Francis & Alice Phillips  
Raymond Renner  
Sheila Renner  
Bill Rich  
Cheri Rich  
Don Robinson  
Hayley Robinson  
Tami Robinson  
Tyler Robinson  
Pauline Rowles –  
    In Memory of Rev. Stewart Rowles  
Bob & Markey Saltmarsh  
In Honor of Cheryl Ann Sanders  
Art & Cheryl Sappington  
Doug Schmalz  
Peg Schmalz  
Don & Linda Schmidt  
Bonnie Scrimager  
Ralph Scrimager  
Mr. & Mrs. Ron Spears  
Ken & Joan Struttman  
In Honor of Jerry & Barbara Sullivan  
Kyra Faith Swearingen  
Dr. & Mrs. Gregory L. Totel  
Tim & Julie Wilkerson  
Dennis Williams  
Jon and Lori Yelenick  
Earl & Martha Yockey –  
    In Memory of Marisa Yockey

# The Little Theatre On The Square's 2005 Donors General Operating Fund

**W**e wish to thank and acknowledge the following individuals, foundations and corporations who have made contributions to our general operating fund. Their generous support helps us to keep our ticket prices low, while keeping our production values at their highest levels possible. These are this year's donors as of press time. Donors to The Little Theatre's Capital Campaign are listed elsewhere in the program.

## Stars (\$2000-\$4999)

Tate & Lyle, Decatur

## Performers (\$1000-\$1999)

Ken & Deb Best, Kankakee

## Patrons (\$500-\$999)

Doug & Peg Schmalz, Decatur

## Benefactors (\$250-\$499)

Charles and Linda Adams, Mattoon

Larry and Carol Bushu, Arcola

Gery and Cheryl Conlin, Arthur

The First National Bank—

Mattoon Community Banking Center

Jim and Jerry Geekie, Paris

Bob and Debi Johnston, Decatur

Larry and Marty Jones, Sullivan

Charlene Oberlin, Effingham

Pearman Pharmacy, Inc., Paris

Roger and Verna Tice, Sullivan

## Advocates (\$125-\$249)

Margaret and Ed Durbin, Brownstown

Steve Foglia —

Chris Bracken, Decatur

Dr. and Mrs. Jerry Hastings, Mattoon

Hefner, Eberspacher & Tapella, Mattoon

Dr. Henry and Esther Poterucha, Effingham

## Saints (\$100-\$124)

Lu Ann Bircher, Charleston

Mildred and Wayne Bohlen, Decatur

David and Ellen Bruce, Springfield

Richard and Sharon Buckler, Arthur

Warren and Jo Burgard, Urbana

Lloyd Bury, Arthur

Lewis and Barbara Clark, Decatur

Douglas and Alicia DeLong, Sullivan

Kay DeLong, Charleston

Richard and Mary Dawson Droste, Charleston

Andrew Edwards, Tolono

Rick and Susie Edwards, Arcola

Bob, Cathy and Beth Hagen, Sullivan

Barbara Hall, Urbana

Ron and Nedra Hash, Findlay

C. Michael and Beth Hewing, Teutopolis

William and Selma Horton, Pana

Stu and Carole Hott, Sullivan

John and Mary Ann Koucky, Decatur

Carl Lebovitz —

In Memory of James K. Lively

Mr. Tom and Dr. Kathleen LeVeck, Mattoon

Jerry and Janet McDaniel Family, Newton

Bill and Jill Morgan, Mattoon

Judy Murphy, Mattoon

Ron and Bonnie Ruecker, Decatur

Donald and Phyllis Scoles, Neoga

Lew and Patty Stiff/Doncaster, Mattoon

Karen and Arthur Willaredt, Mattoon



## 2005 Donors

### Angels (\$75-\$99)

Joan Beetle, Urbana  
Jerry and Marsha Robbins, Bismarck  
John and Sandy Henry, Decatur  
In Memory of Ted Streenz, Jr.

### Guardians (\$50-\$74)

Jim and Jean Bailey, Danville  
Roger and Eileen Baker, Eureka  
Bartscht-Fischbach Insurance, Shelbyville  
Jan and Doug Belles, Mattoon  
Lelia Bonnsetter, Charleston  
Jerry and Gail Brenner, Decatur  
Bob and Pat Cannon, Camargo  
Robert V. and Geraldine Elder, Sullivan  
Dr. and Mrs. Don Fischer, Champaign  
William and Marge Gaulz, Channahon  
Dr. Edward and Barbara Hoppin, Mattoon  
Pauline Jurgens, Decatur  
Howard and Kathryn Lindecker, Charleston  
George and Marion Marquis, Mattoon  
Doug, Kelly and Megan McDevitt, Effingham  
Douglas and Linda Poe, Effingham  
Maury and Rose Mary Shepherd, Charleston  
Charlene Smith, Cerrito Gordo  
Lester and Sharon Southard, Blue Mound  
Ramona Tomshack, Charleston  
Ginger Yakey, Effingham

### Friends (\$25-\$49)

Lyetta Awalt, Effingham  
Cathy Babbs, Charleston  
Jack and Caroline Bealy, Decatur  
Rex and Marilyn Brown, Decatur  
Mike and Vicki Budde, Mattoon  
Noma Jean Carter, Windsor  
Beverly Dean, Arthur  
Todd and Vicky Foster, Charleston  
Michael and Melanie Gibala, Decatur  
Betty L. Glasscock, Gays  
Mike and Linda Grose, Sullivan  
Leon and Karen Huffmanster, Mattoon  
Max and Louanna Jaeger, Mattoon  
Daniel J. and Laurie L. King, Effingham

### Friends (continued)

Hal and Mary Kottwitz, Mattoon  
Barbara and Joe McKenzie, Mattoon  
Eleanor Means, Chrisman  
Janet Meier, Charleston  
Irene Moody, Sullivan  
William and Rosemary Myers, Teutopolis  
Jim and Nancy Nelson, Effingham  
Dennis and Judy Ozier, Sullivan  
Ginny and Leo Perucca, Effingham  
Neil and Eleanor Pistorius, Decatur  
Mrs. Evelyn Preecs, Jasouville, Ind.  
Raymond and Sheila Renner, Stewardson  
Dallas and Nancy Seitz, Moweaqua  
Louis Stanke, Mattoon  
Russ and Marge Stark, Charleston  
Jan Sweet, Mt. Zion  
John and Jo Swick, Mattoon  
Curt, Peggy, Ashley and  
Michelle Valenti, Effingham  
Harold and Nadine Wilkey, Windsor  
Ken Will, Teutopolis  
Arthur, Sr. and Jo Willaredt, Mattoon  
Gilbert and Sharon Wood, Decatur  
In Memory of Harold Moss -  
Jan and David Young  
Bill and Sandy Zeeb, Blue Mound

The Little Theatre  
thanks all our donors  
for their support...  
we couldn't do it  
without you!



# 2005 Board of Trustees

The Little Theatre On The Square is governed by a not-for-profit corporation, The Little Theatre On The Square, Inc. The Board of Trustees is made up of representatives from communities throughout the theatre's market area.

## 2005 Officers

President	John Benda
Vice President	Gary Swearingen
Secretary	Michael Martin
Treasurer	Marilyn Sears

### Region One Trustees

Linda Carlton-Huber ..... Sullivan  
 Bruce Condill ..... Arthur  
 Mary Beth Condill ..... Arthur  
 Dixie Dickens ..... Sullivan  
 Evan Dickens ..... Sullivan  
 Mary Ann Hargis ..... Sullivan  
 Bud Harris ..... Sullivan  
 Pam Harris ..... Sullivan  
 Lonnie Holder ..... Sullivan  
 Julie King ..... Windsor  
 Pauline Rowles ..... Sullivan  
 Bridget Van Hook ..... Sullivan  
 Stanley Van Hook ..... Sullivan  
 Ron White ..... Sullivan

### Region Two Trustees

John Benda ..... Decatur  
 Dick Cain ..... Decatur  
 Sue Ann Cain ..... Decatur  
 Bob Pancoast ..... Decatur  
 Tami Robinson ..... Mt. Zion  
 Jeri Wenberg ..... Mt. Zion

### Region Three Trustees

Debbie Benefiel ..... Paris  
 Steve Benefiel ..... Paris  
 Larry Bushu ..... Arcola  
 Kevin Corley ..... Champaign  
 Ellen Hall ..... Tuscola

### Region Four Trustees

Myra Oltman ..... Effingham  
 Lisa Rincker ..... Strasburg  
 James Yockey ..... Shelbyville  
 Judy Yockey ..... Shelbyville

### Region Five Trustees

Christine Borreggine .... Charleston  
 Dr. Joe Borreggine ..... Charleston  
 Anne Higley ..... Charleston  
 Robert Hills ..... Martinsville  
 Margaret Hollowell ..... Charleston  
 Michael Martin ..... Mattoon  
 Mary Lou Randolph .... Charleston  
 Marilyn Sears ..... Mattoon  
 Lewis Stiff ..... Mattoon  
 Patty Stiff ..... Mattoon  
 Gary Swearingen ..... Neoga

# 2005 Little Theatre Summer Company

**M. Seth Reines, Artistic Director**

## Artistic Staff

Managing Artistic Director ..... Michael Haws  
Guest Directors ..... Millie Garvey,  
Marie Jagger-Taylor, Ann Nieman,  
Sam Scalamoni, Kenny Shepard  
Choreographers ..... Millie Garvey,  
Marie Jagger-Taylor, Ann Nieman  
Musical Director ..... P. Jason Yarcho  
Scenic Designers ..... Chris Peters, Noel  
Rennerfeldt, Nathan Rohrer, Robbie Vaughn  
Lighting Designer ..... Diane Kinkennon  
Costume Designers ..... Jennifer Peterson,  
Nathan R. Rohrer, Kathryn Wagner  
Equity Production Stage Manager .....  
..... Tom Reynolds  
Assistants to Kenny Shepard ..... Deb Wims,  
Carol Worcel

## Performance Company

**Equity Actors** ..... Jim Ballard,  
Tracy Ganem, Michael Haws, Scott Alan  
Jones, Aaron Lake, Anna McNeely, Jack Milo,  
Whit Reichert, Chrissy Wright

**Non-Union Actors** ..... Leonard Anderson,  
Harrison Austin, Seth Bogner, Ann Borders,  
Dick Borders, Matt Burns, Ben Edwards, Ann  
Ehnes, Brandon Haagenson, Gina Handy, Alex  
Jorth, Rebecca Kloha, Jeff Kready, David Les-  
lie, Ian Liberto, Luke Mills, Drew Nellesen,  
Cassidy Ohrt, Elizabeth Pugh, Courtney Self,  
Trey Skocy, Angie Smith, Kristen J. Smith,  
Lauran Stanis, Michelle Suzanne Valenti,  
Melissa Weaver

## Musicians

Chris Alexander, Darrell Aydelott, Jon Burk-  
hardt, Bryan Chesi, Andrew Dixon, Elaine  
Fine, W. David Hobbs, Kara Huber, Joseph  
Ingolia, Mike Jones, Terence Mayhue, Chris-  
topher Mroczek, Rob Reder, Ed Schaller, Jr.

## Children's Chorus

Hannah Blevins, Collin Crabtree, Sarah  
DeLong, Klinton Gibbons, Marisa Gollus,  
Evin Lehman, Mark McKown, Mayim Moore,  
Tyler Robinson, Chelsea Smith, Kat Stowell,  
Jordan Villanueva

**Leonard Anderson, Executive Director**

## Administration and Support Staff

Business Manager ..... Lori Harbaugh  
Education Director ..... Marie Jagger-Taylor  
Marketing Director ..... Cheri Mayberry  
Company Manager ..... Stacy Walker  
Ticket Office Managers ..... Arlene Denning,  
Becky Zimmerman  
Administrative Assistant ..... Donna Newcome  
Ticket Office Assistants ..... Erin Denney,  
Laura Elder, Pam Meece, Marissa Reedy,  
Jill Seelhoef, Jamie Welty  
House Manager ..... Lara Seelhoef  
Photographer ..... R.R. Best

## Production Staff

Stage Manager ..... Stacy L. Walker  
Asst. Stage Managers ..... Katy McGlaughlin,  
Emily Wilson  
Production Manager ..... Adam Liston  
Master Carpenter ..... Loren Pratt  
Carpenter ..... Jason Dodough  
Scenic Painter ..... Jenn Scheller  
Props Mistress ..... Dana Stremming  
Master Electrician ..... Ben Edwards  
Deck Electricians ..... Megan E. Stadick,  
Cami Stoaks  
Master Technician ..... Sarah Kattau  
Technician ..... Daniel Jones  
Sound Engineer ..... Walter Beals  
Costume Shop Foreman ..... Katie Schmidt  
Wardrobe ..... Holly Ashcom  
Stitcher ..... Sarah Marie Stark





The Little Theatre  
is a member of  
**NAMT**

n/a|m/t

NATIONAL ALLIANCE  
for MUSICAL THEATRE

The National Alliance for Musical Theatre, founded in 1985, is the only national service organization dedicated exclusively to musical theatre. Its 144 members include theatres, booking and presenting organizations, universities, and individual producers. Located throughout thirty-three states and six countries, member companies vary substantially in size, structure, and purpose, reflecting the increasing diversity of the field. Their common bond is a shared commitment to preserve and enhance this uniquely American art form.

Actors' Equity  
Association



Actors' Equity Association (A.E.A.), founded in 1913, represents more than 45,000 actors and stage managers working in theatres across the U.S. Equity negotiates wages and working conditions, and provides benefits, including health and pension plans, for its members. Equity's mission is to advance, promote, and foster the art of live theatre as an essential component of our society. Wherever professional theatre exists, Equity exists.

A big thank you to the 2005 Little Theatre summer season company for their hard work and dedication.

# WANTED

## Dirty Screenrooms



- Add more livability to your screened porch, deck or gazebo with this vertical window system.
- Custom sized to fit existing openings without expensive reframing.
- Opens up to allow 75% ventilation.
- 10 Year Warranty • Affordable & Simple

Creative  
**Sunroom**  
Designs

Rt. 121 W. • SULLIVAN  
1-800-231-7979 • 217-728-2306  
[www.creativesunroom.com](http://www.creativesunroom.com)

ADVERTISING  
BRANDING  
CORPORATE IDENTITY  
DESIGN  
MARKETING  
WEB DEVELOPMENT



[WWW.SYNESIS-MARKETING.COM](http://WWW.SYNESIS-MARKETING.COM)  
217.475.0024

**MCDONALD'S PROUDLY SUPPORTS  
THE THEATRE FOR YOUNG AUDIENCE  
PRODUCTIONS**

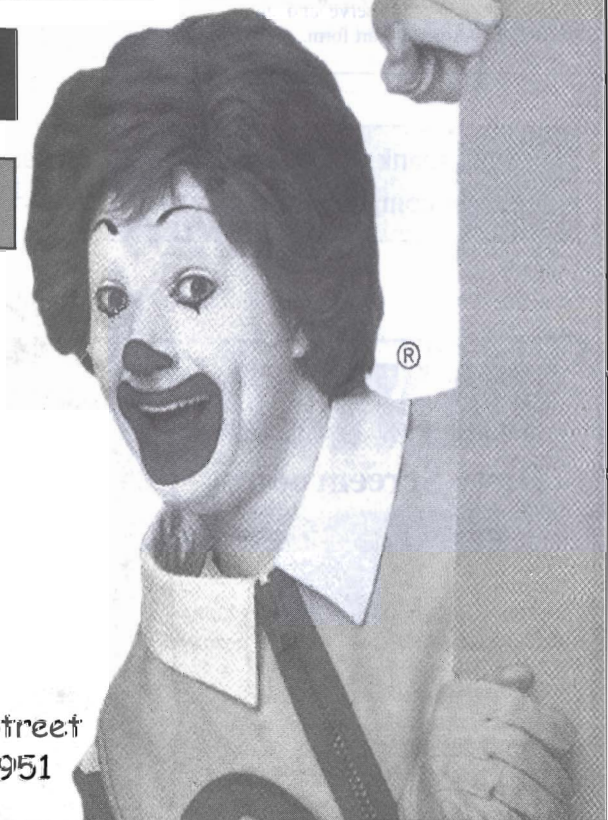
**TRY OUR VARIETY OF DESSERTS**

**VALUE MEALS**

**HAPPY MEALS**



**11 West Jackson Street  
Sullivan, Illinois 61951**



**THE LITTLE THEATRE ON THE SQUARE THANKS RICOLA!**  
*Ricola Natural Herb Cough Drops—Courtesy of Ricola USA, Inc.*



# Bravo

Hickory Point Bank & Trust salutes  
**The Little Theatre on the Square**  
for providing Central Illinois with  
another outstanding season  
of performances.

**Serving you from Eleven Central Illinois locations**



1-800-872-0081

[www.hickorypointbank.com](http://www.hickorypointbank.com)

Member FDIC





## *Setting the stage for life.*

We're ready to set the stage for your financial future.

With a full array of services including Personal & Business Banking, Wealth Management and Insurance — we have the solutions to assist you in a successful performance.

*Call us today to see how we can help you achieve your financial goals.*

**Serving you in over  
20 locations across Illinois.**



**First**

**Mid-Illinois**

**Bank & Trust**

*Because You Expect More.*

[www.firstmid.com](http://www.firstmid.com)

Member FDIC

Equal Opportunity Lender



# Computer Furniture for Life's Big Scenes!



**At Home . . . At the Office . . . At School**



**DESK WITH A VIEW™**

Crossroads Plaza  
1302 Avenue of Mid-America  
Effingham, IL 62401  
217-342-4727  
info@deskwithaview.com

Shop Online 24/7  
[www.deskwithaview.com](http://www.deskwithaview.com)

# Jibby's

Food / Spirits



19 N MAIN  
SULLIVAN IL

Dine In Or Carry Out  
728-7112 & 728-9031



**"HOME OF THE  
FAMOUS  
PEPPERLOIN!"**

## Visit Our "Gallery of Stars"

Just Around the Corner from the  
Little Theatre on The Square



**Enjoy Fresh Cut Steaks  
Seafood & Pasta with Daily  
Lunch & Dinner Specials**

Grill Open: M-Th 11 a.m.-9:00 p.m.

Fri & Sat 11 a.m.-10:00 p.m.

Reservations Recommended

