

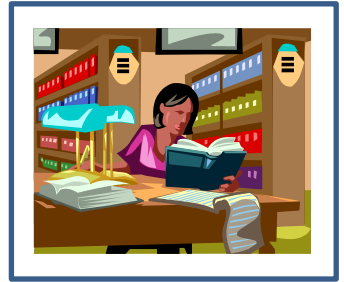
RESEARCH METHODS IN KINESIOLOGY

KSS 5000

Eastern Illinois University

Kinesiology & Sports Studies

Fall 2016



Instructor: Brian Pritschet, Ph.D.
Professor

Office Hours: **Monday 9-10 am, Tuesday 1-2 pm, Wednesday 9-10am & 4-5 pm & Friday 10-11 am**
Other times by appointment

Office: 2207 Lantz Building Phone: 581-2215 (KSS Office)
e-mail: **D2L e-mail,** Panthermail: blpritschet@eiu.edu

Description: An exposure to various types of research methods in related subject areas, a critical evaluation of selected studies, and writing and presenting the research report. Credits: 3

Course Content: Introduction to research in Kinesiology & Sports Studies, Research Publication Formats, Developing the research question, Literature search strategies, Critical analysis of the literature, Presentation of the research problem, Scientific/Experimental, Descriptive, Historical, and Qualitative research, Data collection strategies, Analysis & Interpretation, Writing the research report, Oral and poster research presentation

Course Evaluation:	Assignments	5–15 points each
	Research Proposal	10 points
	Exam	50 points
	Written Research Project	120 points
	Research Presentation	60 points

Grading Scale:

A= ≥90% of total points
B=80-89%
C=70-79%
D=60-69
F=<60%

Course Text: Thompson, Nelson & Silverman. ***Research Methods in Physical Activity*** (7th edition).

Research Project

The final written project will be in the form of a "journal-ready" manuscript prepared in a format that follows the American Psychological Association (APA) writing guidelines for references & citations. You will develop a topic early in the semester and work on the various stages of this project as the course progresses. In most cases, small-scale data collection will be required. A written research proposal will also be completed. Your **Research topic and Methodology must be approved by the instructor prior to any data collection/testing!** More details will be provided in class.

Research Presentation

Each student will share their research project in a poster (60 pts) at the end of the semester at our annual KSS Research Fair. You will be required to create a printed poster (2'x3' or 3'x4') at your own cost. **Attendance for this session is mandatory! The date for the research fair is Wednesday, December 7th** *(the last week of classes - not finals week).*

Exam

This exam will place an emphasis on the application of research skills.

Assignments

Exercises geared to enhance your research skills and/or analysis of research design. Some of these will be graded while others will not. May include but is not limited to, article summaries and research critiques, development of research methodologies and result interpretation.

It is the student's responsibility to be aware of all course assignments and exams through attendance in class and by checking D2L regularly and frequently. Missing an assignment because you failed to check D2L or to attend class is not a legitimate excuse! All assignments must be turned in by the announced due date unless you can provide an official University recognized excuse

D2L based assignments sent via **e-mail** attachment instead of submission through 'Dropbox' will NOT be accepted unless indicated otherwise by the instructor.

It is expected that all students will follow the guidelines set forth in the EIU Student Conduct Code (<http://www.eiu.edu/judicial/studentconductcode.php>). Violations will be reported to the Office of Student Standards.

Academic honesty is expected, cheating in any form (including plagiarism) will not be tolerated! This includes work assigned through D2L! Work submitted via D2L should be completed independently unless otherwise indicated by the instructor.

Please turn phones and music players off and remove earpieces/headphones prior to the start of class and leave them in your pocket or backpacks (they should not be on your desk or in your lap).

THERE SHOULD BE NO TEXTING DURING CLASS!

The use of a laptop computer or tablet device to view or take notes is permissible - but discouraged, however, please do not use for anything other than class related functions


(~~o~~ facebook, games, twitter, browsing, etc.). (Research suggests that less information is retained when tablets/computers are used to take notes compared with writing)

Individuals who habitually violate these guidelines will be asked to leave the classroom and will need to meet with the instructor prior to being allowed to return.

The information contained in this syllabus is subject to change at the discretion of the instructor

- ❖ If you are a student with a documented disability in need of accommodations to fully participate in this class, please contact the Office of Student Disability Services (OSDS). All accommodations must be approved through OSDS. Please stop by Ninth Street Hall, Room 2006 or call 217-581-6583 to make an appointment.
- ❖ Students who are having difficulty achieving their academic goals are encouraged to contact the Student Success Center for assistance with time management, test taking, avoiding procrastination, setting goals and other skills to support academic achievement (www.eiu.edu/~success). The Student Success Center provides individualized consultations. To make an appointment, go to 9th Street Hall, Room 1302 or call 581-6696.

Tentative Schedule

WEEK	Topic	Notes
1	Course Introduction, Scientific Method & the Research Question	
2	Topic Identification & Development Introduction to the Research Problem	
3	Developing the Research Proposal	Proposal
4	Literature Search Strategies and Review	
5	Research Plan and Methodology	
6	Measurement of Variables & Survey Construction	
7	Research Ethics	
8	Descriptive Research	
9	Qualitative Research	
10	Experimental Research	
11	Other Research designs Statistical Evaluation of results	Exam?
12	Analysis, Interpretation & Written Presentation of Results	
13	Writing the Research Report	
14	Dissemination & Presentation of Research	
15	Research Presentation	December 7 th (Poster & Paper Due)