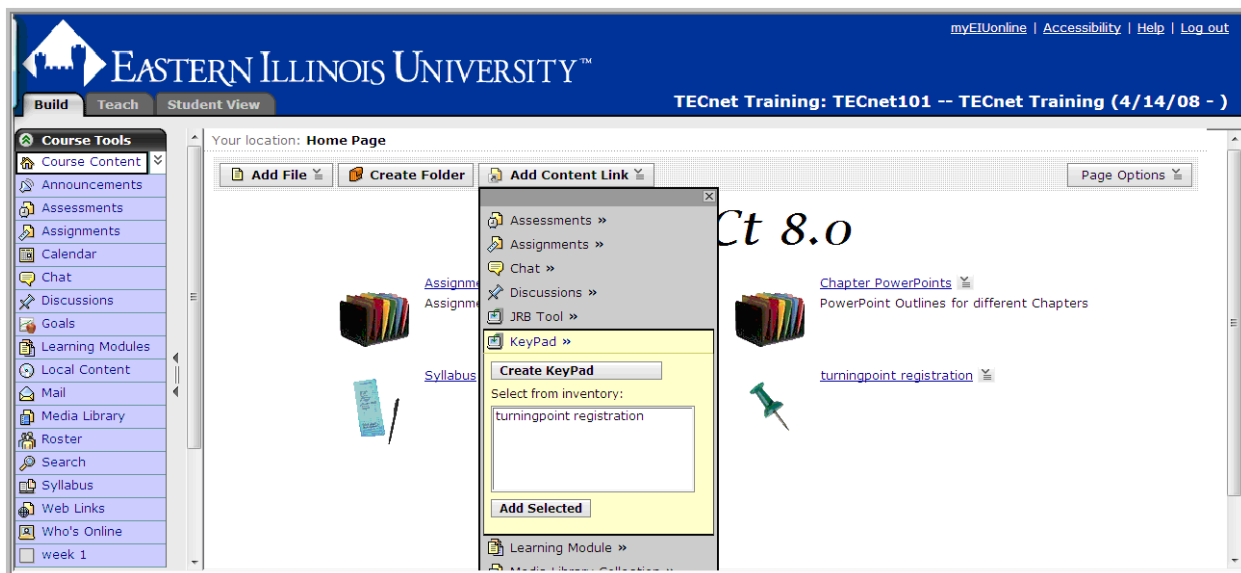


Using WebCT to Create Participant Lists for TurningPoint

Creating a link to keypad registration

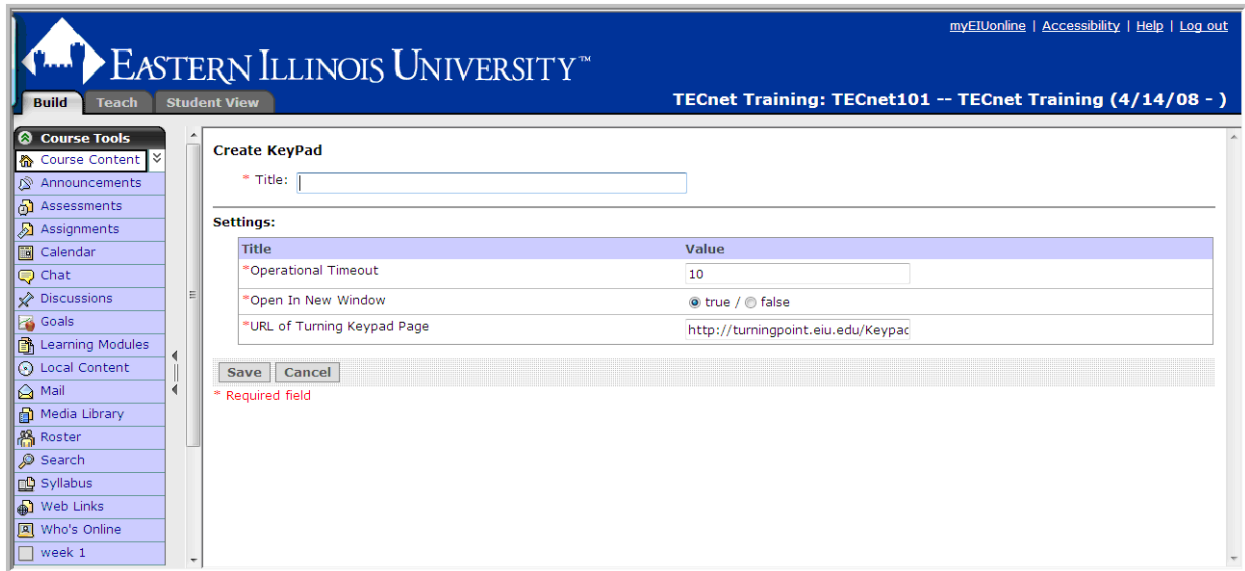
To create a link to the keypad registration on your course home page:

1. Begin with your WebCT course homepage.
2. Under the Build tab, click on **Add Content Link** (top of page)



3. On the submenu, click on “KeyPad”

4. Click on “Create KeyPad”



5. Enter a title for the keypad registration link. Do not change any of the other settings. Then click on **Save**.

A link should now be available on your homepage for the students to enter their own Keypad IDs into the system.



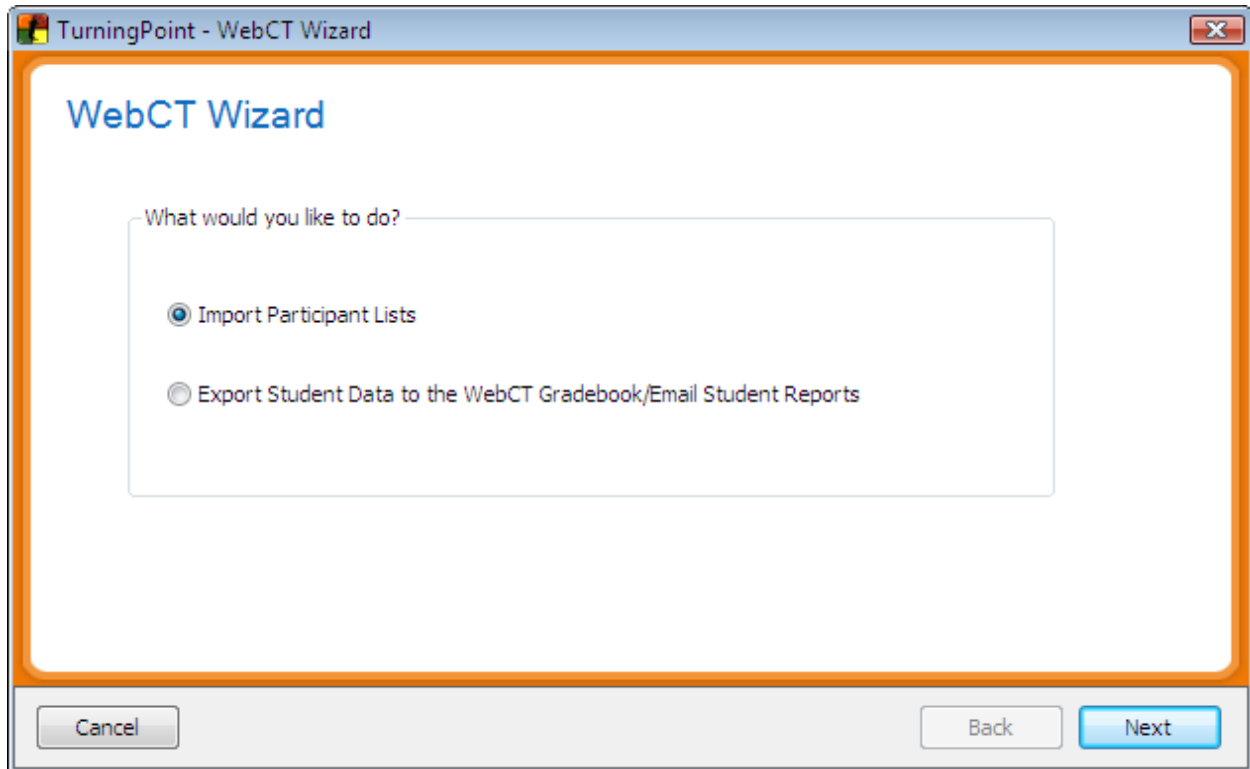
Downloading Participant Lists

To download participant lists from WebCT directly into TurningPoint follow the steps below.

1. Overwrite the file "WebCTAVWiz.dll" in the installation folder "C:\program files\Turning Technologies\TurningPoint 2008" with the attached file. (You only need to do this once)
 - The attached file is a zip file. On a PC you should have something like winzip that can unzip the file. Once it is unzipped, you should have a new file named WebCTAVWiz.dll.
 - Search or browse to find the location of the existing file. Make a copy of the original file that is going to be replaced.

○ Then copy the new file in its place.

2. In TurningPoint toolbar, select “**Tools**”, then “**WebCT Wizards**”, then “**Campus Edition 6.0/vista 3, 4**”.



3. Click **Next**

4. Enter Server Name online.eiu.edu and your user name and password. Check the box Using Server-Wide SSL Encryption

TurningPoint - WebCT Wizard

WebCT Log-In

Server Name (IP):

Port Number:

User Name:

Password:
(if not using WebCT sign-in, please leave password blank)

Using Server-Wide SSL Encryption (ie Server name starts with "https://")

5. Click **Next**

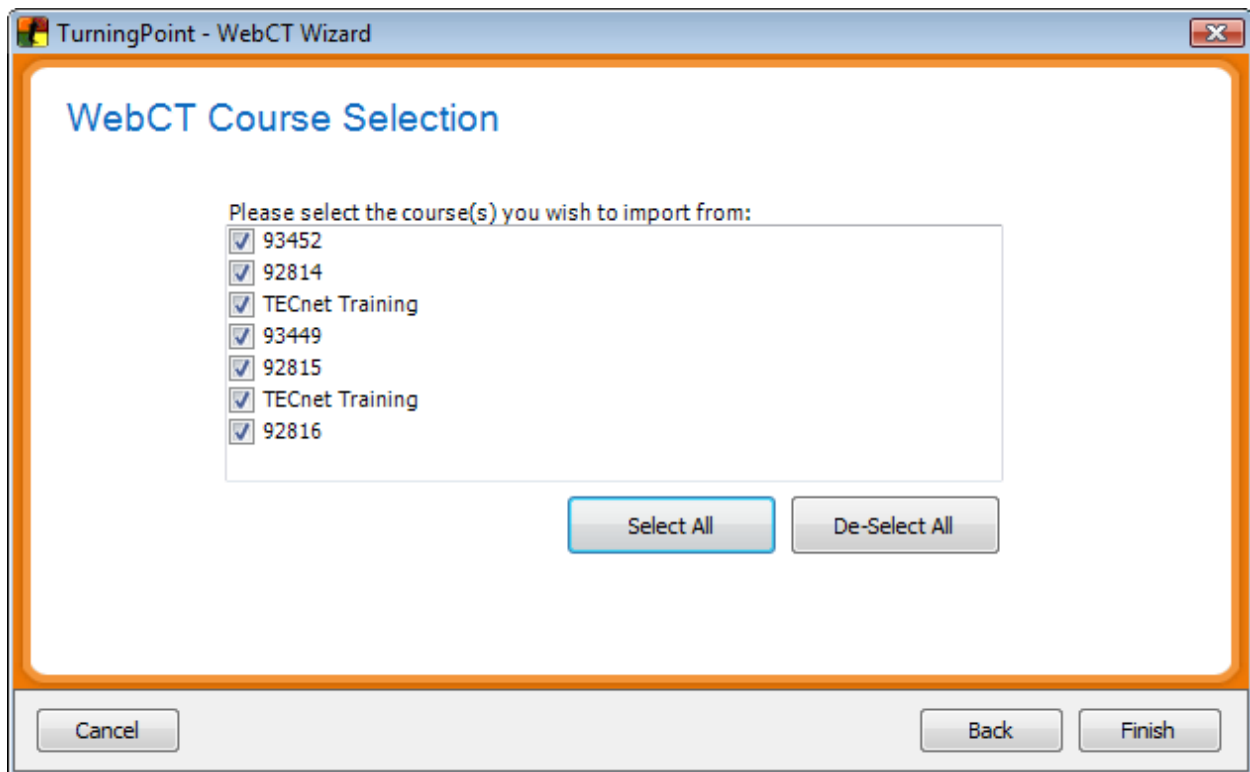
TurningPoint - WebCT Wizard

WebCT Institution Selection

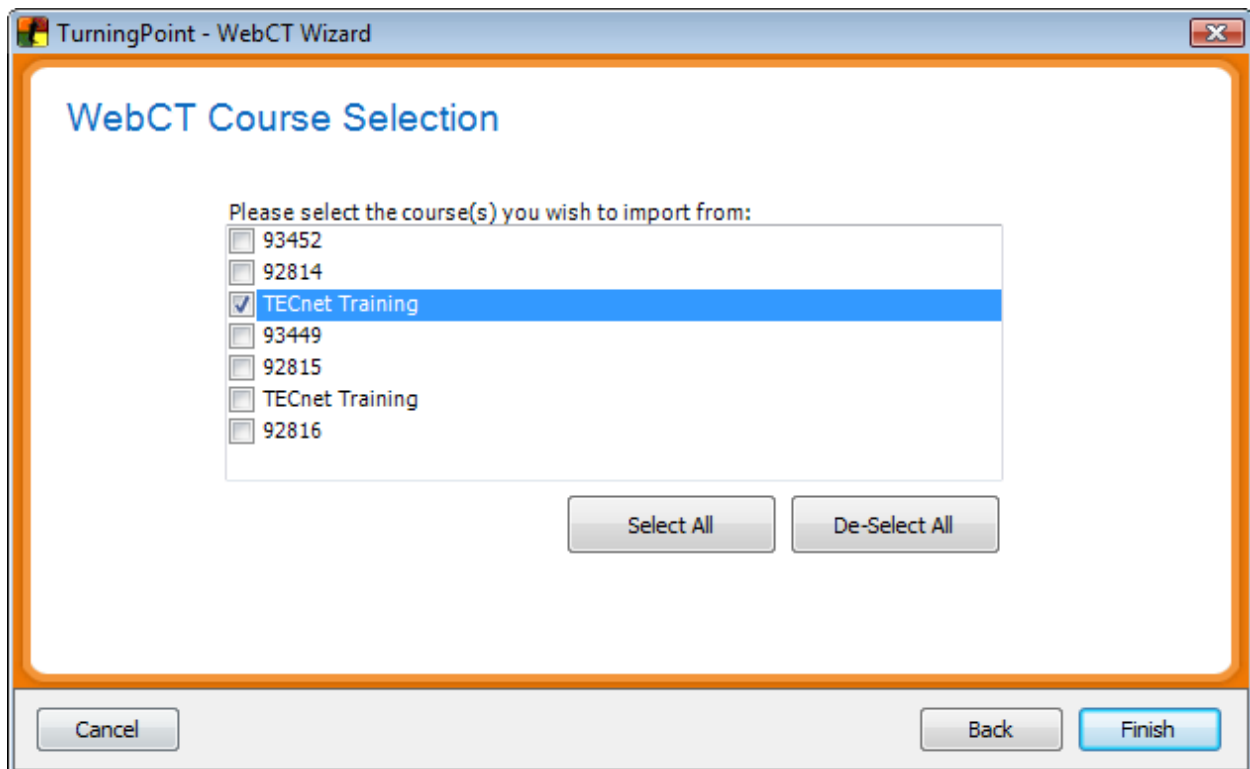
Please select the institution you belong to:

- Eastern Illinois University

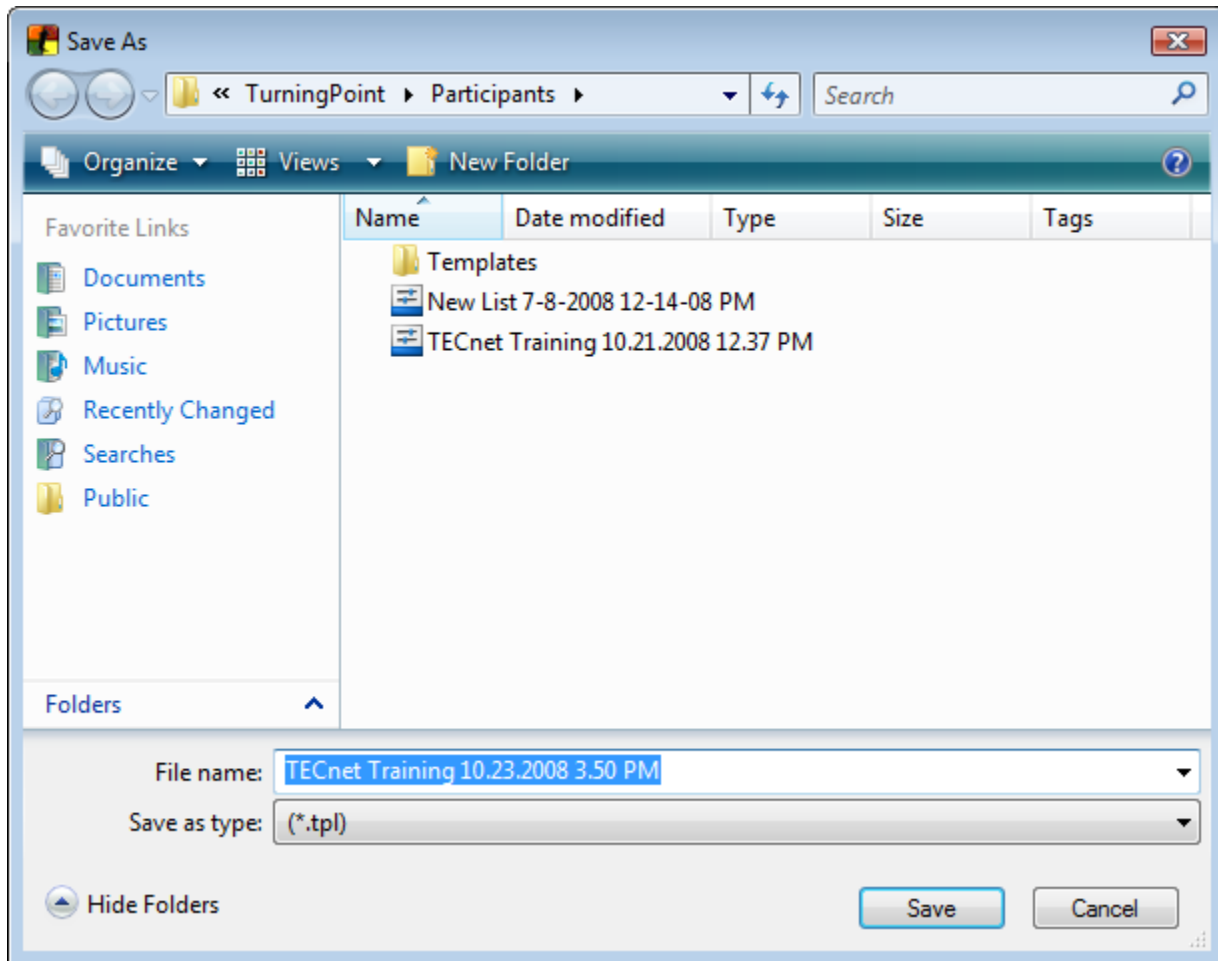
6. Highlight Eastern Illinois University click **Next**.



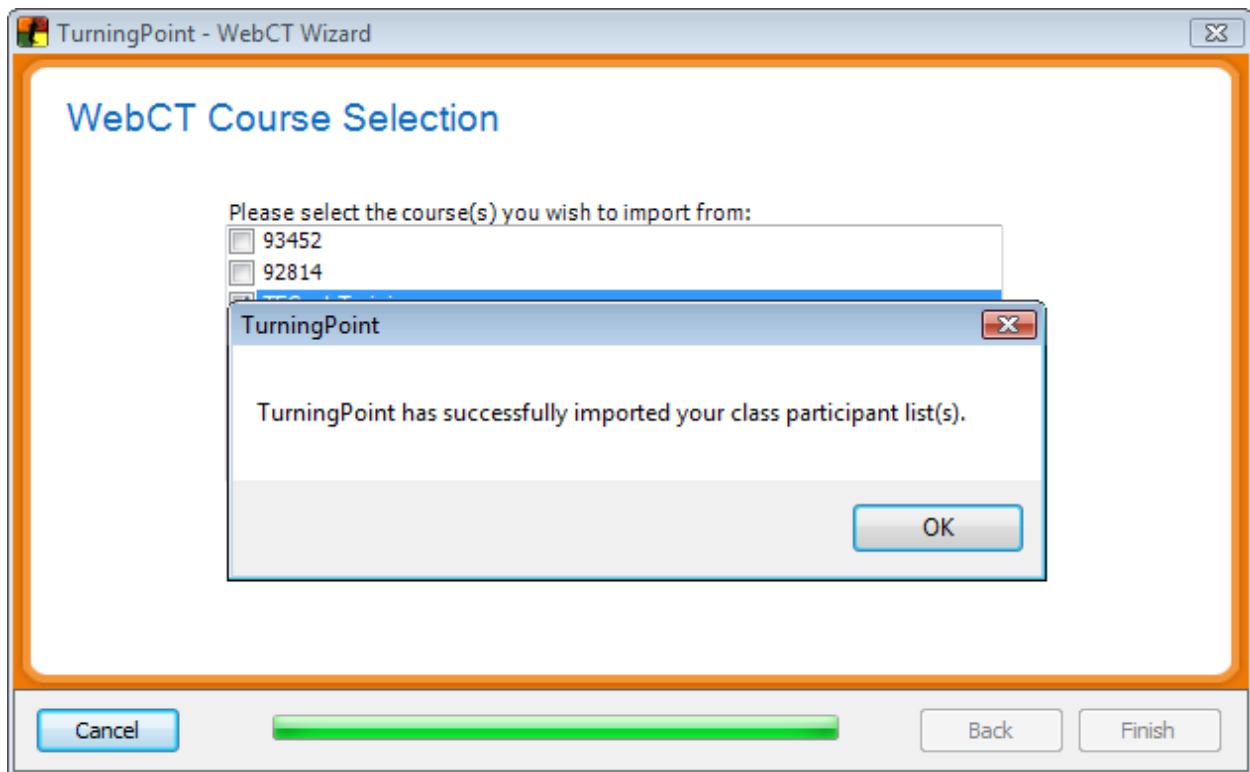
7. Click **De-Select All** and click the corresponding course number for your participant list.



8. Click **Finish**



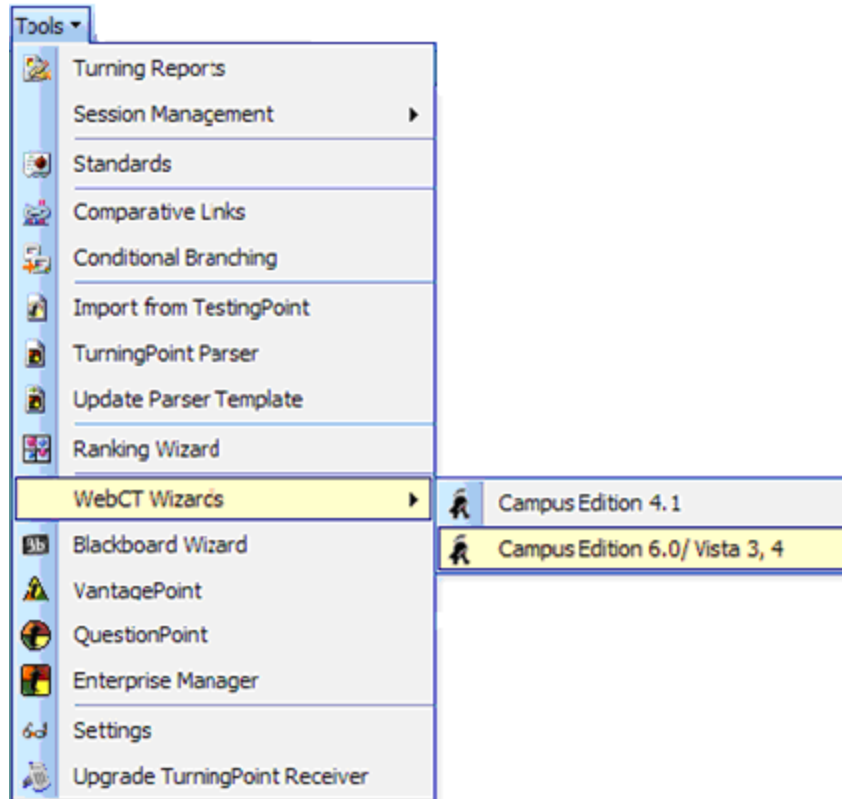
9. Click **Save**

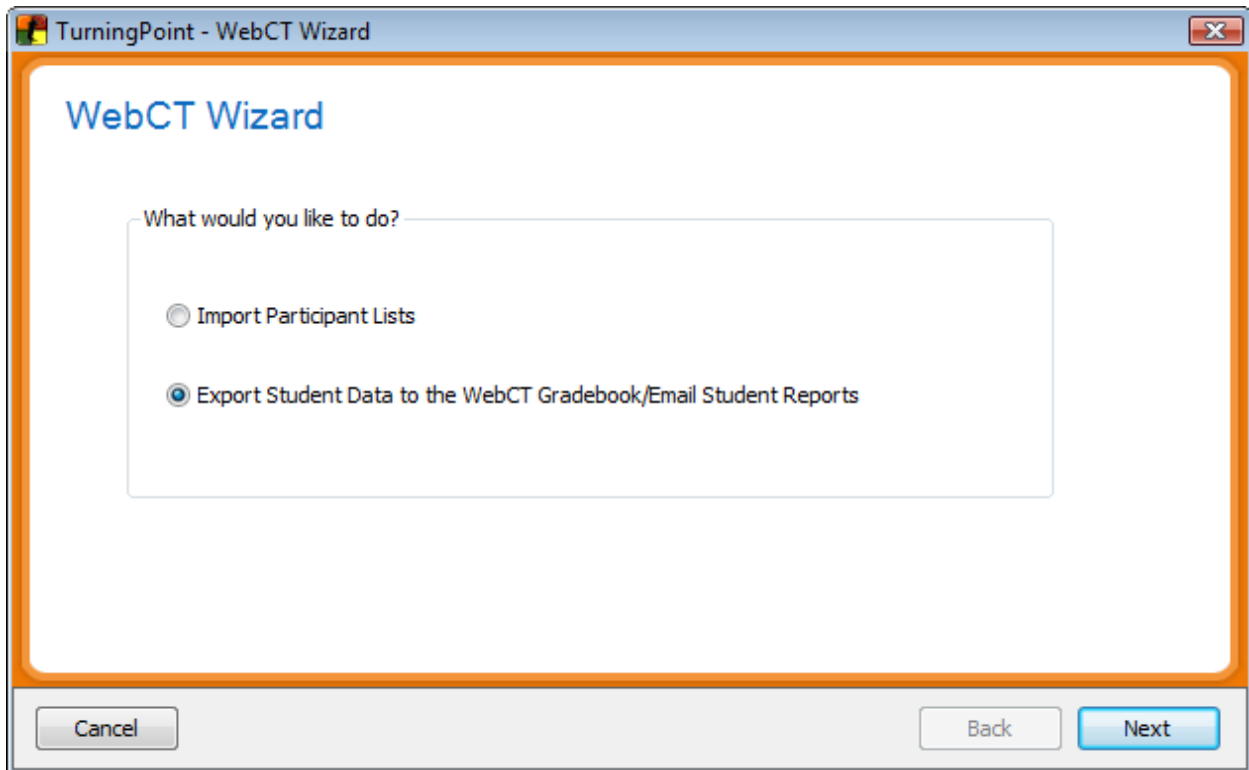


10. Click **OK**

Uploading the data to WebCT

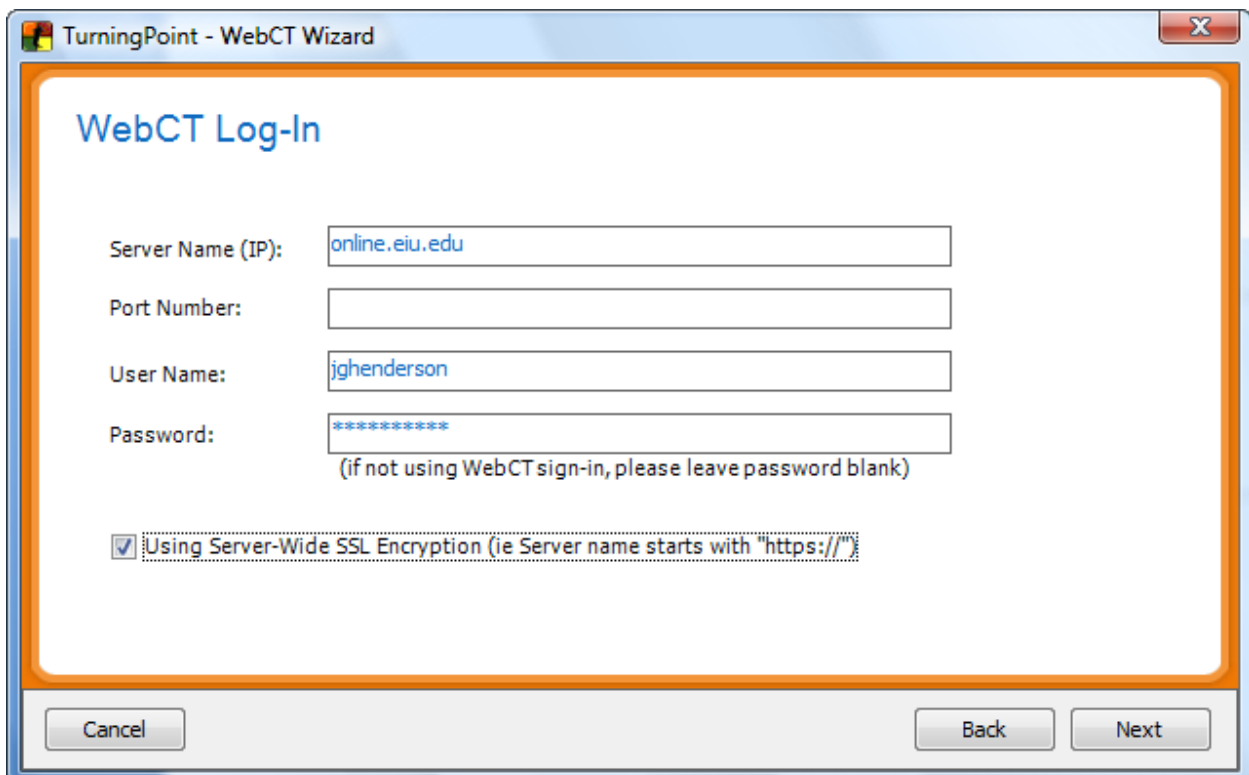
1. On the TurningPoint toolbar, Click **Tools**, then **WebCT Wizards**, and **Campus Edition 6.0/ Vista 3, 4**.



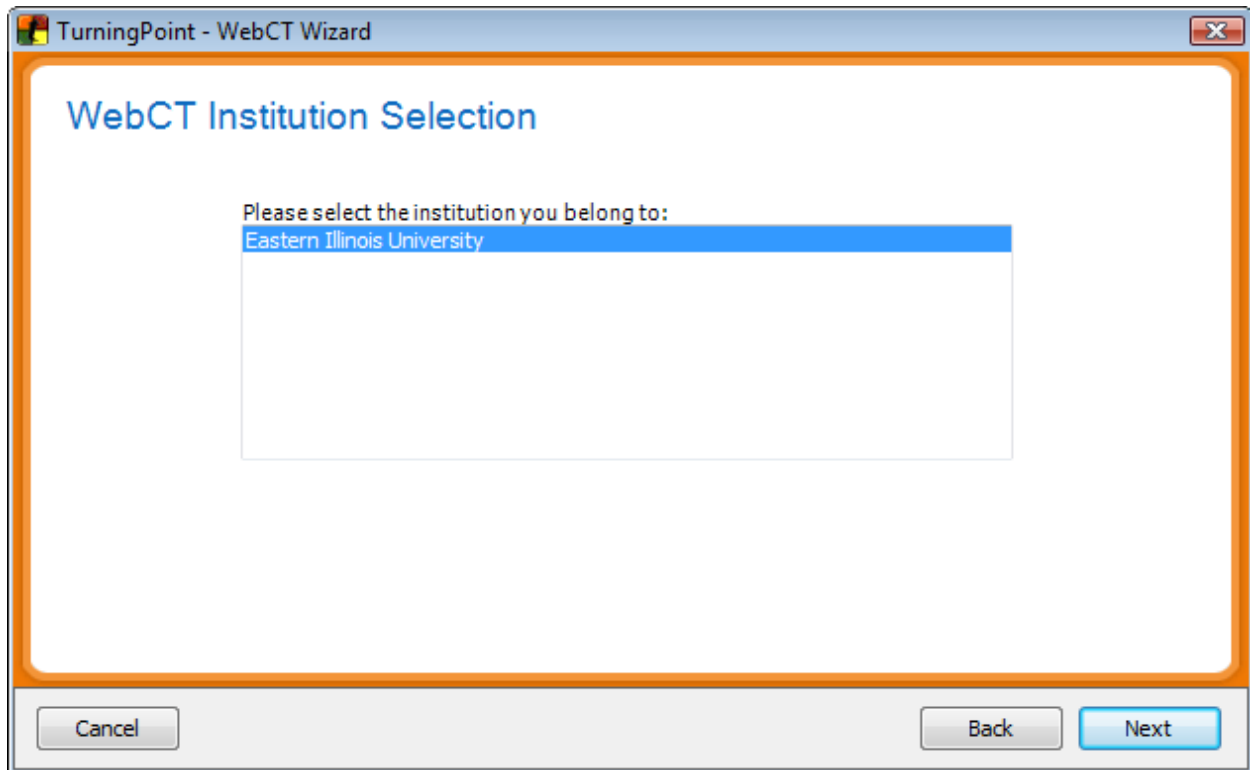


2. Click Export Student Data

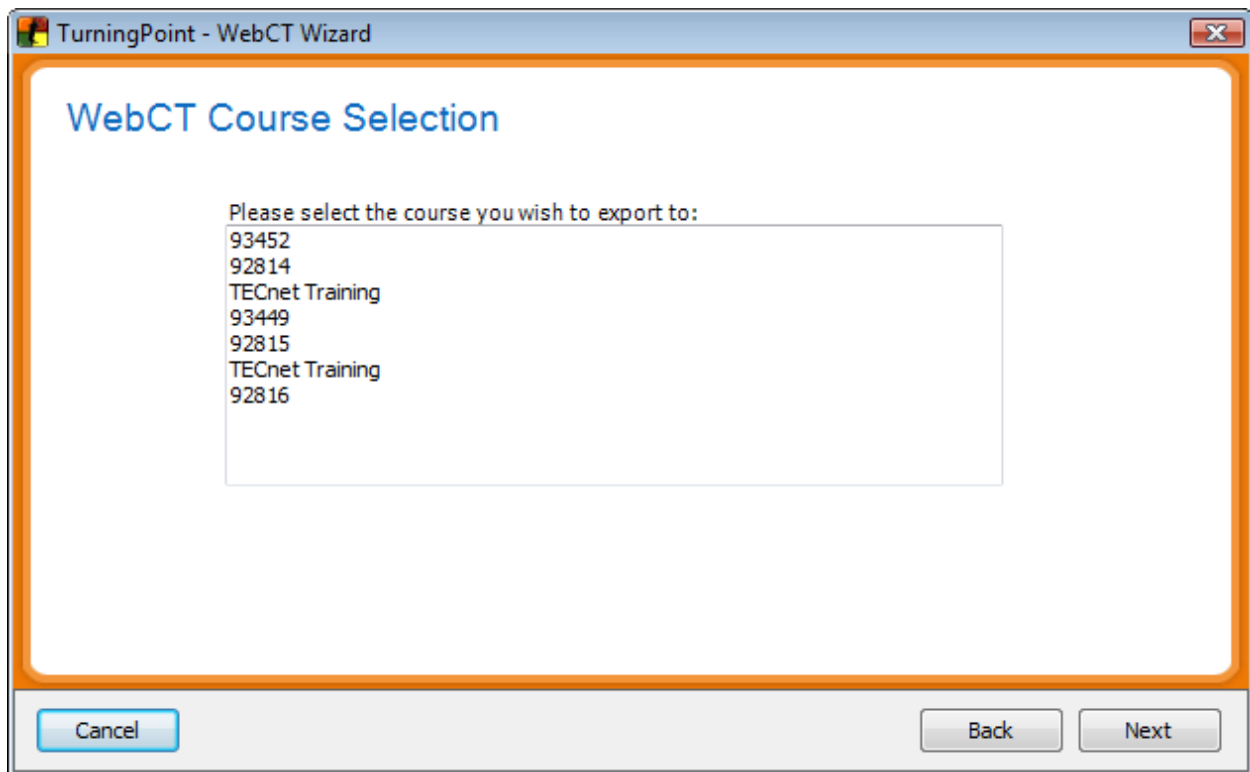
3. Click Next



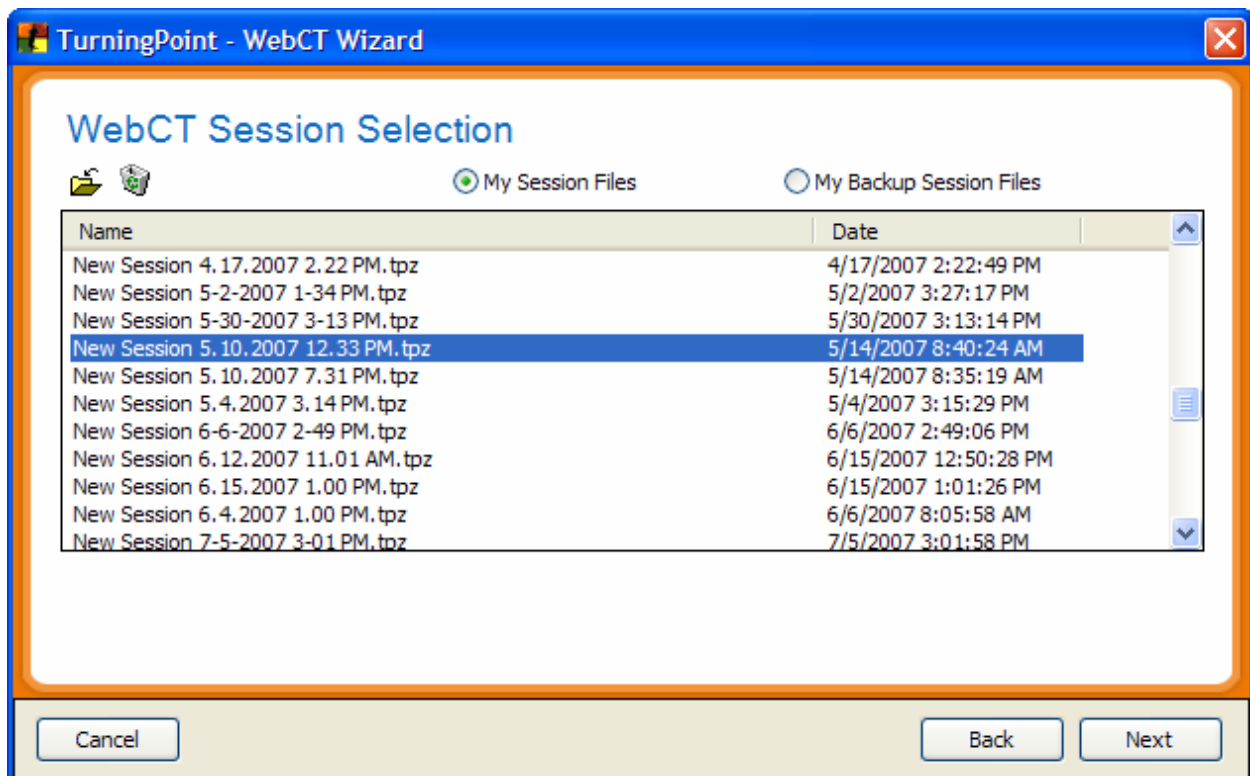
4. Input server name `online.eiu.edu` and your user name and password. Check the Using Server-Wide SSL Encryption box.
5. Click **Next**



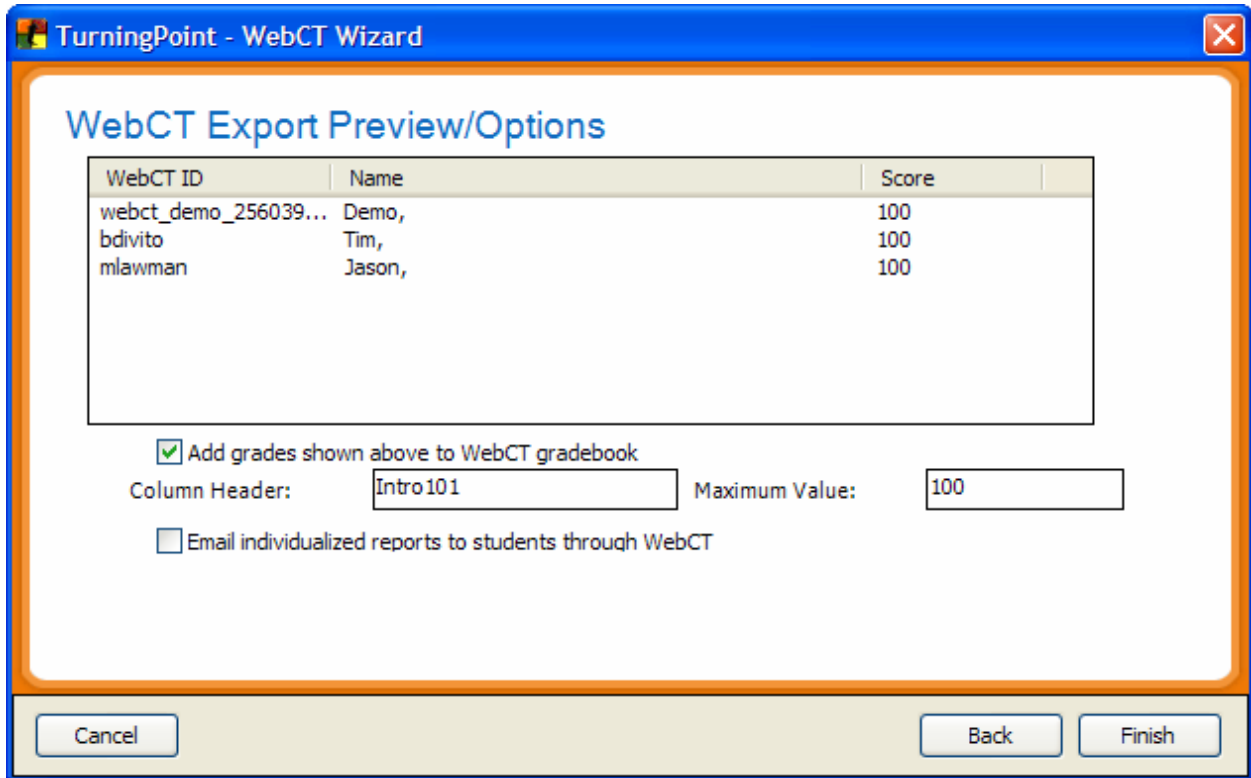
6. Choose Eastern Illinois University click next



7. Select the course you wish to export data, click **Next**.
8. Select the session you wish to export data to, click **Next**.

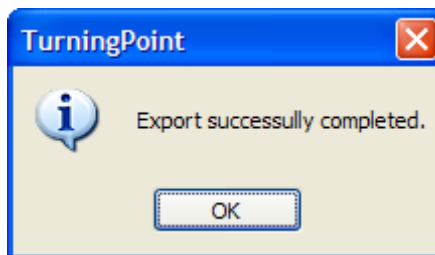


9. Select a session and click **Next**



10. Enter the Name of the assignment and the Maximum Point Value (correct answers default to 100 points each).

TurningPoint will confirm that your session was uploaded.



11. Login to WebCT and go to your Gradebook

12. Review the students' scores.

	% Last Name	% First Name	% User ID	% Role	% Midterm	% Final	% Todd's New	% Todd's Seco	% Test	% ChangeTest	% Intro to wet	% Intro101
	Alphanumeric	Alphanumeric	Alphanumeric	Alphanumeric	Calculated	Calculated	Numeric (out of 200)	Numeric (out of 400)	Numeric (out of 400)	Numeric (out of 200)	Numeric (out of 100)	Numeric (out of 100)
<input type="checkbox"/>	% Cole	Jon	jcole	Section Instruct								
<input type="checkbox"/>	% Divito	bob	bdivito	Student	--	--	200.00	200.00	200.00	200.00	100.00	100.00
<input type="checkbox"/>	% Horrell	Todd	thorrell	Teaching Assist.								
<input type="checkbox"/>	% Lawman	Mandy	mlawman	Student	--	--	200.00	200.00	200.00	200.00	100.00	100.00
<input type="checkbox"/>	% Student	Demo	webct_demo_25	Student	--	--	--	--	--	--	100.00	100.00