

The Skinny on Sorting

The Details of Drying

The Lingo on Labels

The Buzz on Bleach

The Dirt on Detergent

The Particulars of Preparing

The Points of Pretreating

The Laws of Loading

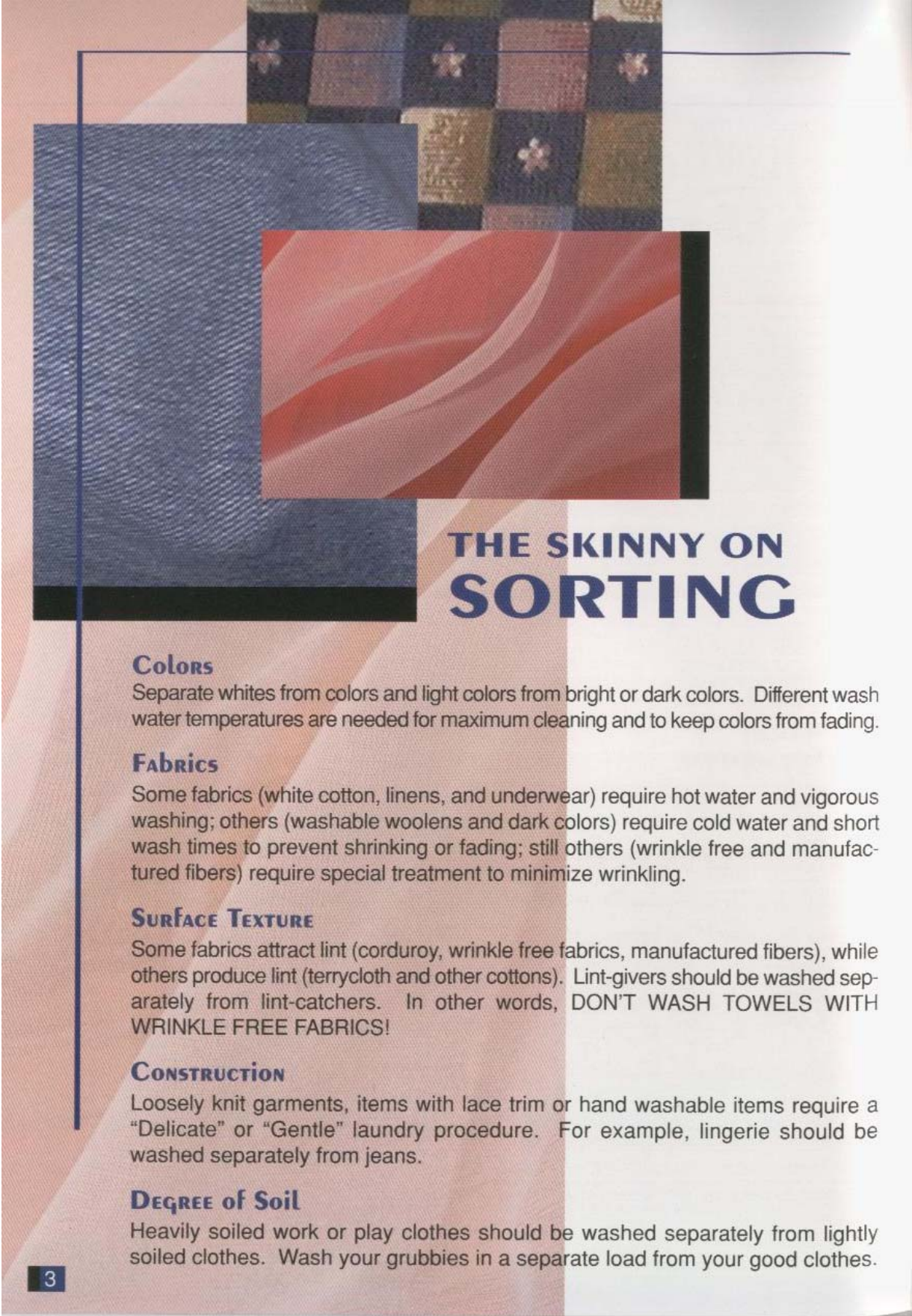
The Facts of Fabric Softener

The Word on Wash Cycles

The Wisdom of Water Temperature

THE LOW-DOWN ON LAUNDRY

MAYTAG
APPLIANCES



THE SKINNY ON SORTING

Colors

Separate whites from colors and light colors from bright or dark colors. Different wash water temperatures are needed for maximum cleaning and to keep colors from fading.

Fabrics

Some fabrics (white cotton, linens, and underwear) require hot water and vigorous washing; others (washable woolens and dark colors) require cold water and short wash times to prevent shrinking or fading; still others (wrinkle free and manufactured fibers) require special treatment to minimize wrinkling.

SURFACE TEXTURE

Some fabrics attract lint (corduroy, wrinkle free fabrics, manufactured fibers), while others produce lint (terrycloth and other cottons). Lint-givers should be washed separately from lint-catchers. In other words, DON'T WASH TOWELS WITH WRINKLE FREE FABRICS!

CONSTRUCTION

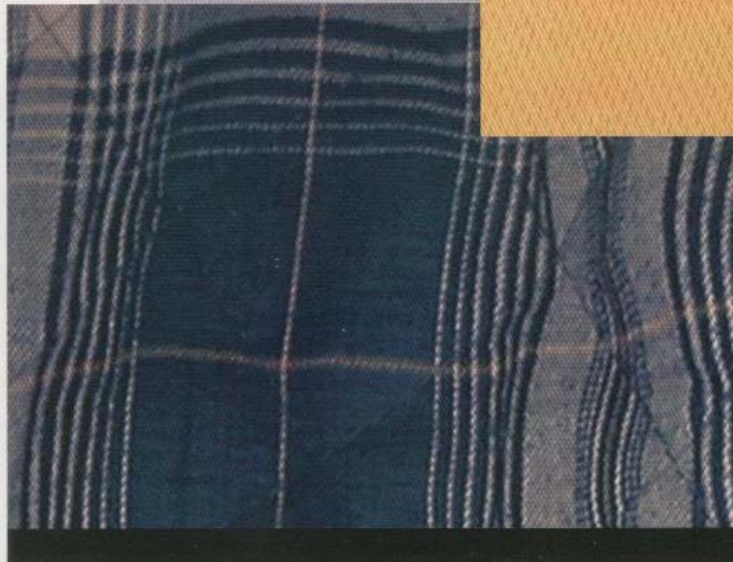
Loosely knit garments, items with lace trim or hand washable items require a "Delicate" or "Gentle" laundry procedure. For example, lingerie should be washed separately from jeans.

DEGREE of Soil

Heavily soiled work or play clothes should be washed separately from lightly soiled clothes. Wash your grubbies in a separate load from your good clothes.

THE PARTICULARS OF PREPARING

1. Empty pockets. Overlooked tissue, crayons, lipstick, ballpoint pens, or any metal object can create real problems when they get into the washer.
2. Shake out loose dirt. Brush dirt and lint off of cuffs.
3. Close zippers, hooks and eyes. They may catch and snag other clothes in the load.
4. Sew up rips and tears before laundering. Otherwise, washing may make them worse.



THE BUZZ ON BLEACH

Chlorine Bleach

Chlorine bleach can be identified by the word "chlorine" or "hypochlorite" on the bottle. It can be used for laundering all fabrics EXCEPT silk, wool, spandex, mohair, and non-colorfast fabrics (check labels). This bleach is used to whiten fabrics as well as disinfect and deodorize.

Liquid chlorine bleach is a powerful chemical. It can damage clothes unless it is DILUTED properly. Many washers have bleach dispensers that automatically dilute the bleach. Follow the washer manufacturer's instructions for use. If there isn't a bleach dispenser, dilute one part bleach in four parts water and add after the washer begins agitating.

Non-Chlorine Bleach

Non-chlorine bleach is identified by package comments such as "color safe" or "safe for all fabrics". It maintains brightness of colors including whites, but is not strong enough to restore whiteness to garments that have become gray and dingy. It is added in the recommended amount along with detergent BEFORE loading the washer.

Detergent with Bleach

Some detergents combine detergent and color safe bleach in one product. The added bleach improves general cleaning as well as stain removal.

These products are convenient to use and safe for all fabrics.

THE FACTS OF FABRIC SOFTENER

RINSE-Added

They are added to the final rinse of the wash cycle. If the washer has a fabric softener dispenser, the softener will be added automatically. Follow the washer manufacturer's instructions for use. If there is no dispenser, add the diluted softener as soon as agitation begins in the final rinse.

Undiluted fabric softener that has come in contact with fabric will cause an oily/greasy looking stain. To remove, rub the dampened stain with hand soap and rewash in the usual manner.

A fabric softener stain will also attract any rust or soil from the washes in subsequent launderings. This causes the stain to look like gray or black grease.

Using too much fabric softener in relation to the load size makes items like towels less absorbent. Laundering without the use of fabric softener for several washes will help remove the excess softener.

DRYER-Added

When using dryer-added softeners, add only one sheet per load at the beginning of the dry cycle. Remove any previously used fabric softener sheets from the dryer to avoid any grease-like marks left on the load.

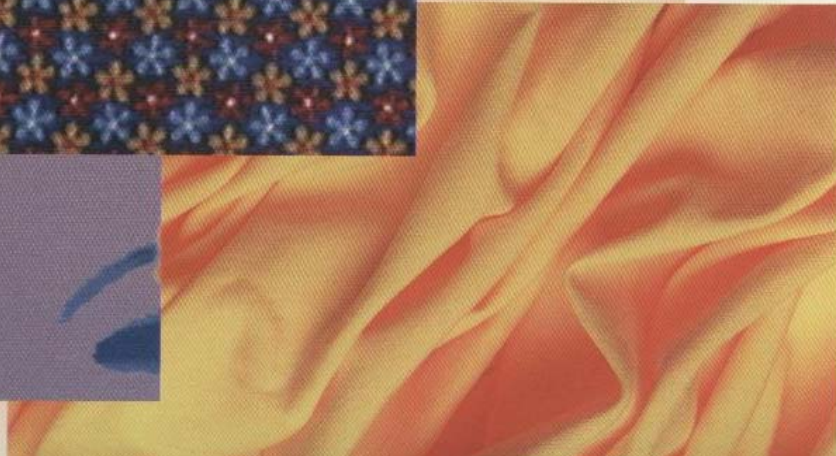
DETERGENT with FABRIC SOFTENER

This is available in both liquid and granular forms. It offers the convenience of adding both items to the washer at once, while purchasing just one product.

Our machines have dispensers. Don't fill it all the way up. This is not needed.

THE POINTS OF PRETREATING

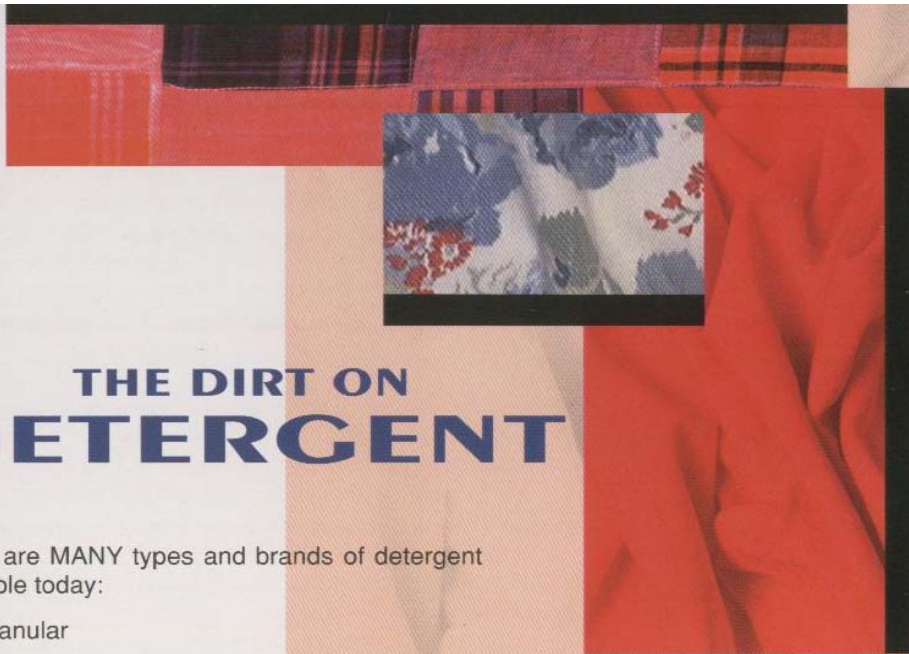
1. Refer to a stain removal chart to get instructions for removing a special stain. The more quickly a spot or stain is treated, the easier it is to remove.
2. Heavy soil on collars and cuffs should be pre-treated. Use a liquid detergent, a paste of granular detergent and water, or a special pre-treat product. Follow the manufacturer's directions. Since some sprays may soften fingernail polish, be careful to avoid rubbing your nail polish off on the clothes you are treating.
3. Soaking helps remove soils from dirty garments. Soak oily soiled garments in warm water; soak protein stained items (blood, grass, etc.) in cold water. Always follow a soak with a wash cycle to ensure thorough stain removal. The benefits of soaking occur in the first 30 minutes.



Save Money and use very little detergent. You must use HE Detergent for excellent results.



Look for the HE logo



THE DIRT ON DETERGENT

There are MANY types and brands of detergent available today:

- granular
- liquid
- high efficiency detergent
- detergent with bleach
- detergent with fabric softener
- specialty detergents designed to be free of dyes and/or perfumes.

Granular detergents work best on mud and clay types of soils and in hard water. Heavy-duty, **liquid detergents** are good for cold water washing. They clean greasy, oily stains better than granulars and are handy for pretreating spots and stains.

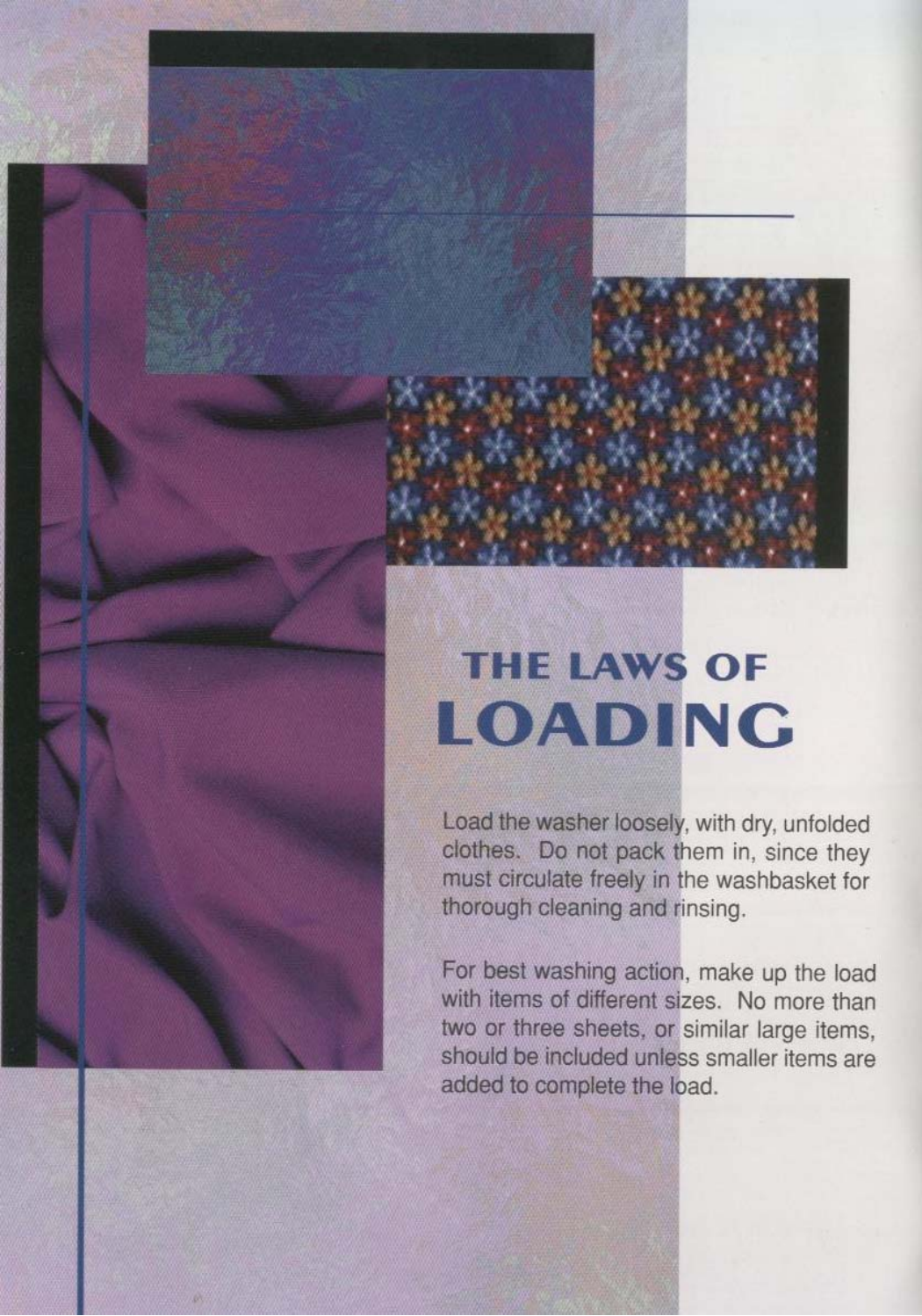
High efficiency detergents are specifically formulated for front load washers. These detergents are low sudsing in order to create a more effective cleaning system.

Many detergents are now concentrated, so less detergent is needed than in the past. Keep in mind, the use of a particular detergent may affect laundering results no matter what brand or model of washer is used.

AMOUNT TO USE

Regardless of washer type, follow directions on the detergent package for the amount to use. Package recommendations are for an "average" load with "average" soil in water of "average" hardness (4-9 grains per gallon or gpg).

Use extra detergent for big loads, extremely dirty clothes, maximum water levels or hard water. Likewise, less detergent should be used on small loads, lightly soiled clothes, low water levels, or soft water (0-3 gpg).



THE LAWS OF LOADING

Load the washer loosely, with dry, unfolded clothes. Do not pack them in, since they must circulate freely in the washbasket for thorough cleaning and rinsing.

For best washing action, make up the load with items of different sizes. No more than two or three sheets, or similar large items, should be included unless smaller items are added to complete the load.

THE WISDOM OF WATER TEMPERATURE

Use a **hot water wash** (140° F - If there are young children or elderly adults in the home, a minimum of 120° F can be used) for most white fabrics and heavily soiled colorfast fabrics. A **warm water wash** (85 - 105° F) is the best choice for most other clothes. **Cold water washing** (65 - 75° F) is recommended for very lightly soiled or brightly colored garments.

Cold water washing saves energy, but sometimes good results are sacrificed. If the water is too cold to wash your hands in, it may be a good indicator the detergent will not activate.

To maintain performance when cold water washing additional steps may be needed, these include:

- Use a liquid detergent or predissolve granulars before loading the washer.
- Bleach whenever possible.
- Presoak heavily soiled and stained clothes.
- Pretreat spots and stains.



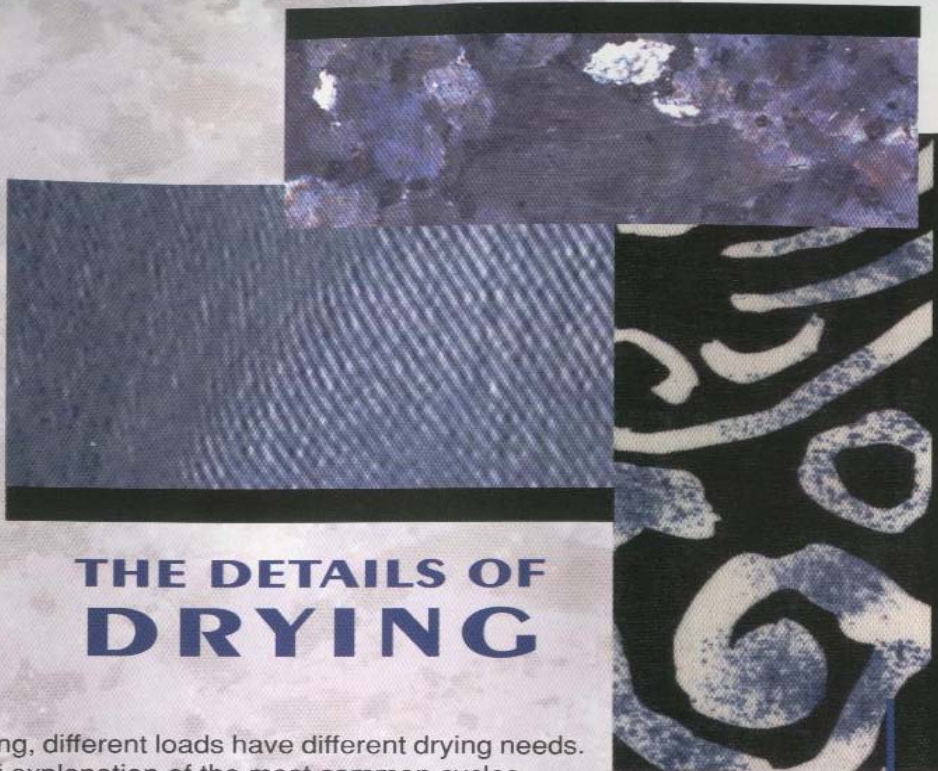
THE WORD ON WASH CYCLES

Separate washing procedures are needed for:

- Regular, Cotton/Sturdy, and Whites cycles can be used to wash sturdy fabrics like cottons, denim, linen and heavily soiled clothes loads.
- Easy Care/Permanent Press, Wrinkle Free Cottons, and Colors cycles can be used for permanent press and no iron fabrics such as wrinkle free cottons, polyester, and nylon, which need a cooling down rinse to avoid wrinkling during spinning.
- Delicates and Handwashables cycles can be used for sheer fabrics, loosely knit items, washable woolens and anything labeled hand wash, and items which require a gentle washing procedure.

Each wash cycle can be adjusted for wash time, load size, and water temperature.

Please Note: Clothes must tumble to dry. Old dryers with coin mechanisms are overladed when you place full washer load in them. Newer dryers without coin mechanisms please use auto dry cycles. 42 minutes for 1 push.



THE DETAILS OF DRYING

Cycles

As with washing, different loads have different drying needs. Here is a brief explanation of the most common cycles.

- Regular - Use this setting to dry non-permanent press loads such as towels, underwear, or jeans.
- Easy Care/Permanent Press, Wrinkle Free - This cycle provides a longer cool-down period to help ensure the most wrinkle free results. It is used for permanent press items and no-iron fabrics such as nylon, acrylic, polyester, or blends.
- Air Fluff - This no-heat cycle can be used to dry items that cannot be dried with heat or to freshen pillows, draperies, and bedspreads.

Drying Tips

Dryer drying wrinkle free or "no-iron" garments helps to minimize wrinkling. To avoid unnecessary ironing, remove items from the dryer when the cycle is completed.

Although many clothes today can be dryer dried, be sure to check the care label to make sure. There are some items that should NEVER be dried on a heat setting: rubbercoated items, laminate fabrics, vinyl, plastics and some woolsens.

Remember, do not put more than one washer load in the dryer at a time.

Do not overdry fabrics. It is normal for elastic bands in shorts, socks, or bras to feel slightly damp when first removed from the dryer.