

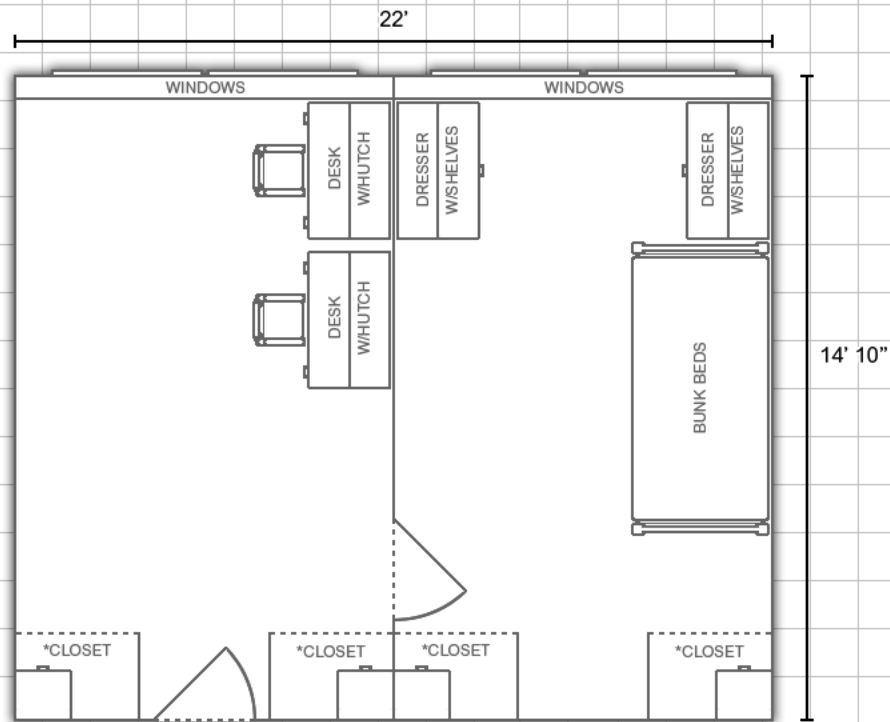
# Thomas Hall:

Information available at [www.eiu.edu/~housing](http://www.eiu.edu/~housing)



## Deluxe Double Room:

[Rooms 402, 406, 410, 414, 418, 422 and 426]



\*Closets include an immovable chest of drawers

### DEPARTMENT:

**Housing and  
Dining Services**



EASTERN ILLINOIS UNIVERSITY

**Bedding:** Bedding in all rooms measure 80" X 39" (x-long twin)

**Furnishings:** Rooms are carpeted and feature stackable, loftable and bunkable furniture

**Miscellaneous:** *Layouts are not to scale*