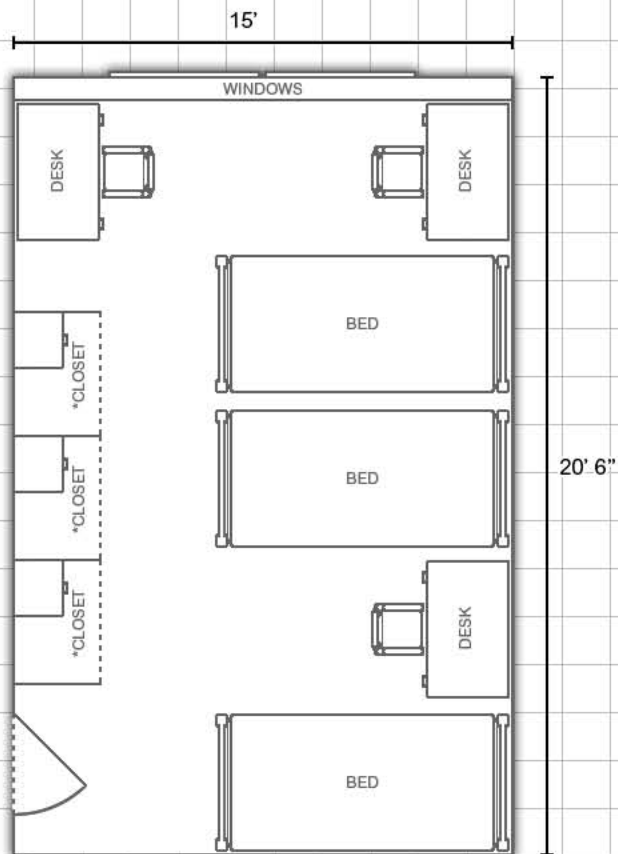


# McKinney Hall:

Information available at [www.eiu.edu/~housing](http://www.eiu.edu/~housing)

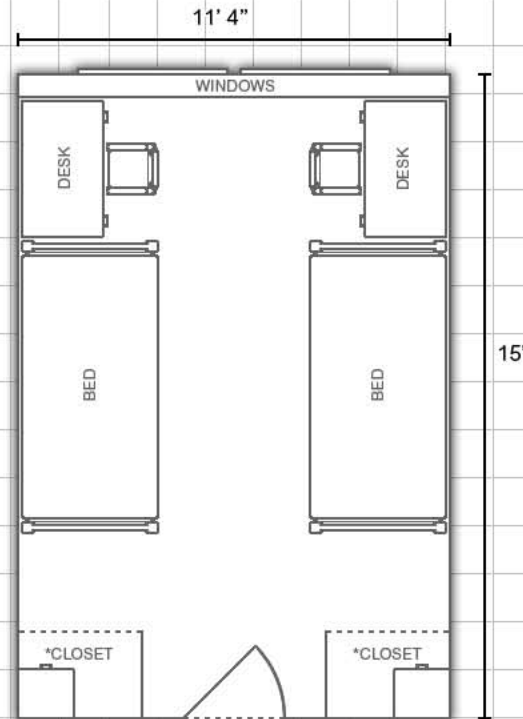


## Triple Room:



\*Closets include an immovable chest of drawers

## Double Room:



\*Closets include an immovable chest of drawers

DEPARTMENT:

**Housing and  
Dining Services**



EASTERN ILLINOIS UNIVERSITY

**Bedding:**

Bedding in all rooms measure  
80" X 39" (x-long twin)

**Miscellaneous:**

*Layouts are not to scale*