

# Lincoln Hall:

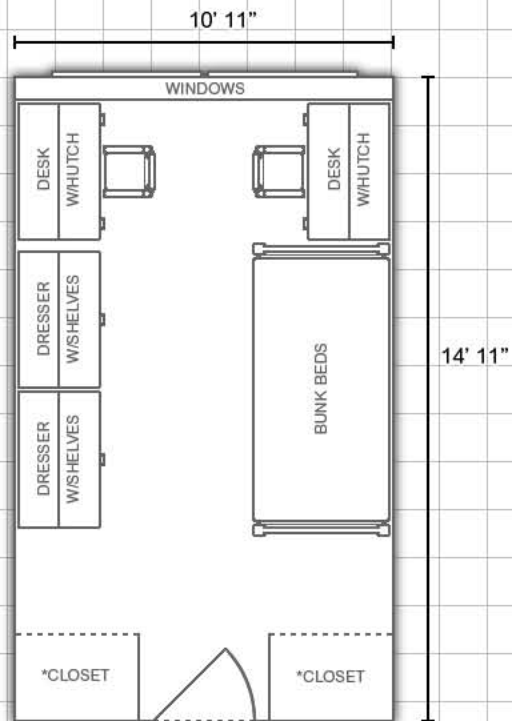


Information available at [www.eiu.edu/~housing](http://www.eiu.edu/~housing)

More layouts  
on back!



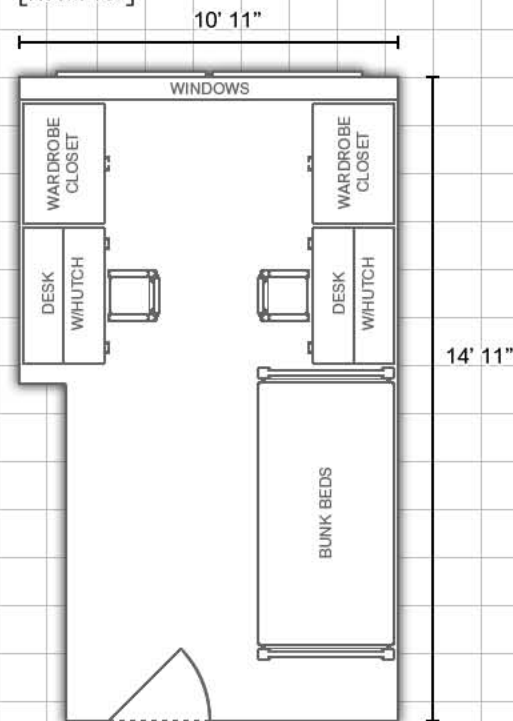
## Double Room:



\*Double rooms may contain either closets or wardrobe closets

## Double Room:

[Room 167]



### DEPARTMENT:

**Housing and  
Dining Services**



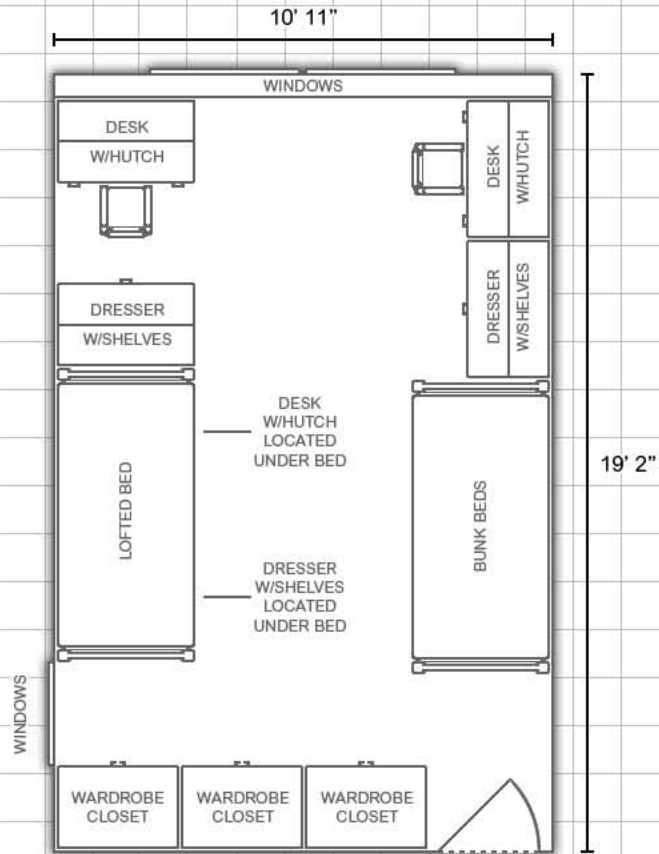
EASTERN ILLINOIS UNIVERSITY\*

**Bedding:** Bedding in all rooms measure 80" X 39" (x-long twin)

**Furnishings:** Rooms are carpeted and feature stackable, loftable and bunkable furniture

**Miscellaneous:** *Layouts are not to scale*

### Triple Room:



See front page for more information.