

# Lawson Hall:

Information available at [www.eiu.edu/~housing](http://www.eiu.edu/~housing)

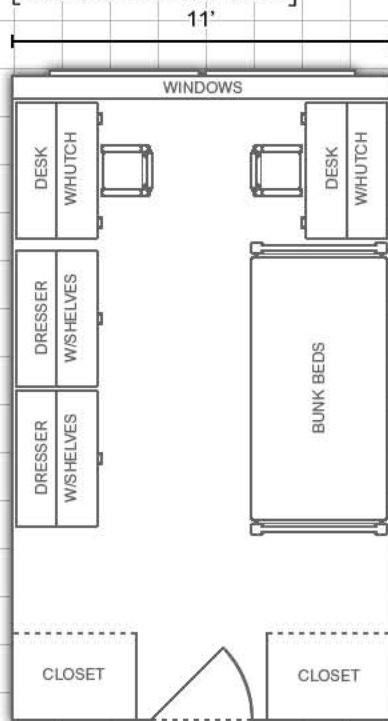


More layouts  
on back!



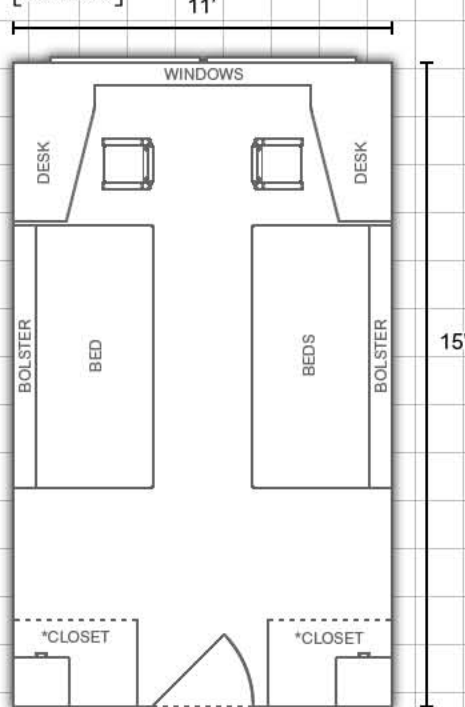
## Double Room:

[Third and ninth floor rooms]



## Double Room:

[Standard]



\*Closets include an immovable chest of drawers

### DEPARTMENT:

**Housing and  
Dining Services**



EASTERN ILLINOIS UNIVERSITY\*

**Bedding:** Bedding in all rooms measure  
80" X 39" (x-long twin)

**Furnishings:** Rooms on the third and ninth  
floors are carpeted and feature  
stackable, loftable and  
bunkable furniture

**Miscellaneous:** *Layouts are not to scale*

### Single Room:

[Rooms 315, 316,  
915 and 916]



### Single Room:

[Standard]

