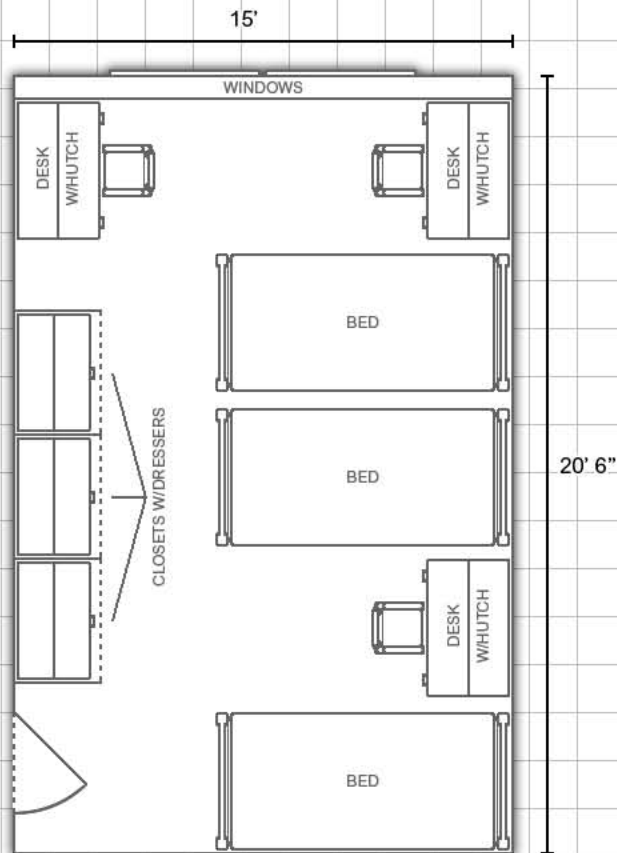


# Ford Hall :

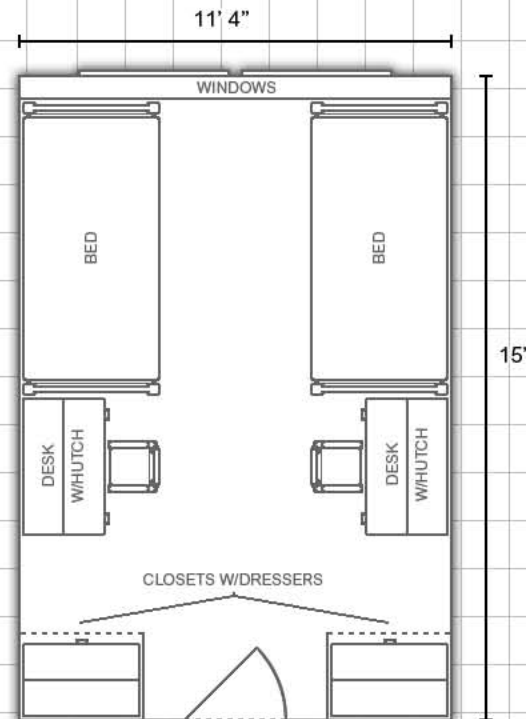


Information available at [www.eiu.edu/~housing](http://www.eiu.edu/~housing)

## Triple Room:



## Double Room:



### DEPARTMENT:

**Housing and  
Dining Services**



EASTERN ILLINOIS UNIVERSITY™

**Bedding:** Bedding in all rooms measure  
80" X 39" (x-long twin)

**Furnishings:** Rooms feature stackable,  
loftable and bunkable  
furniture

**Miscellaneous:** *Layouts are not to scale*