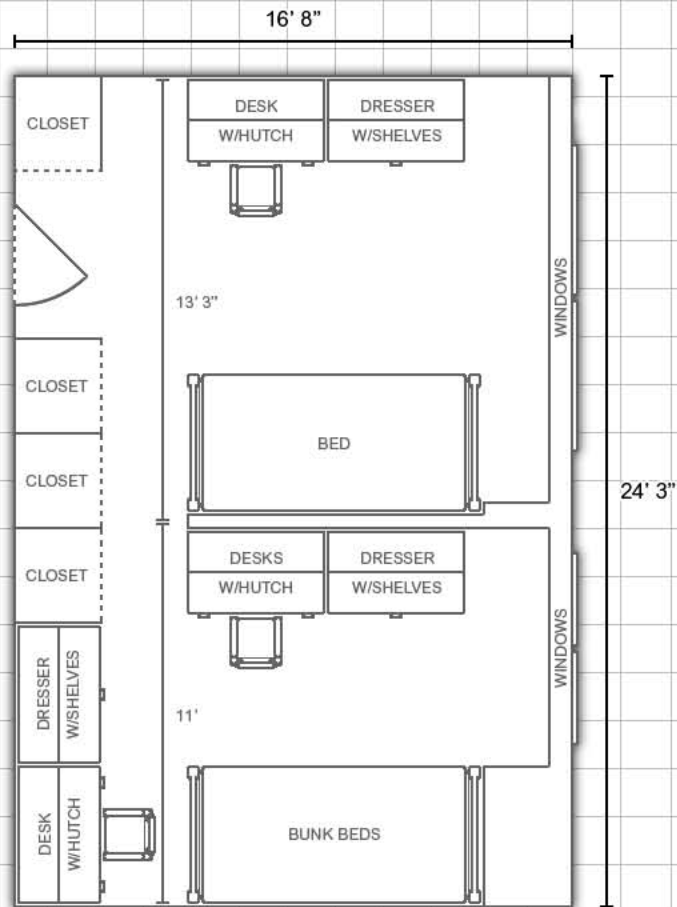


Carman Hall:

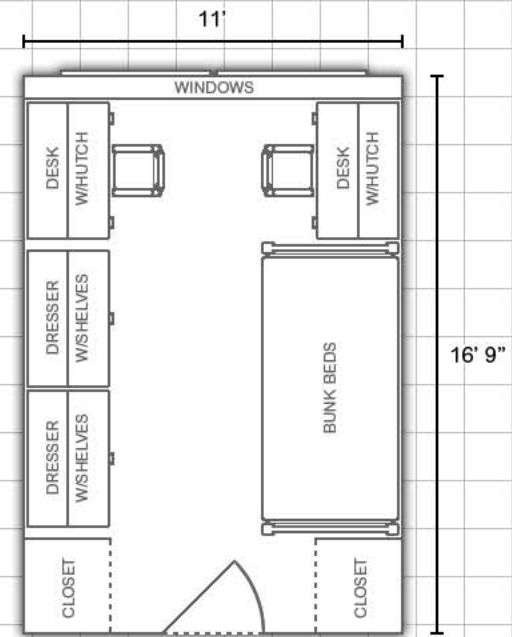
Information available at www.eiu.edu/~housing



Triple Room:



Double Room:



DEPARTMENT:

Housing and Dining Services



EASTERN ILLINOIS UNIVERSITY

Bedding: Bedding in all rooms measure 80" X 39" (x-long twin)

Furnishings: Rooms are carpeted and feature stackable, loftable and bunkable furniture

Miscellaneous: *Layouts are not to scale*