

Andrews Hall:



Information available at www.eiu.edu/~housing

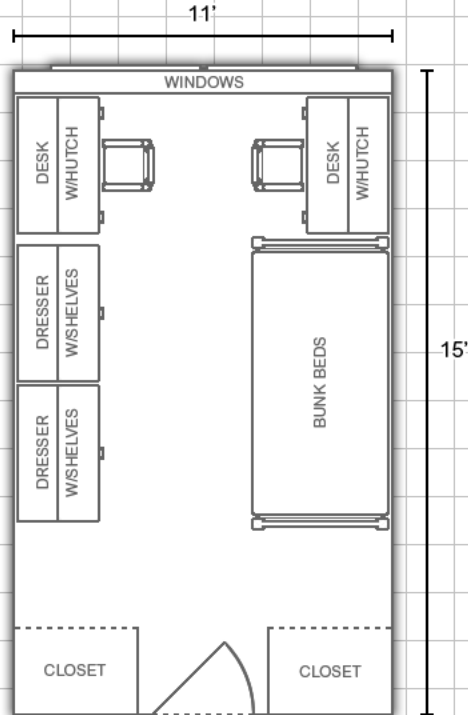
DOUBLE & SINGLE ROOMS ONLY

More layouts on back!



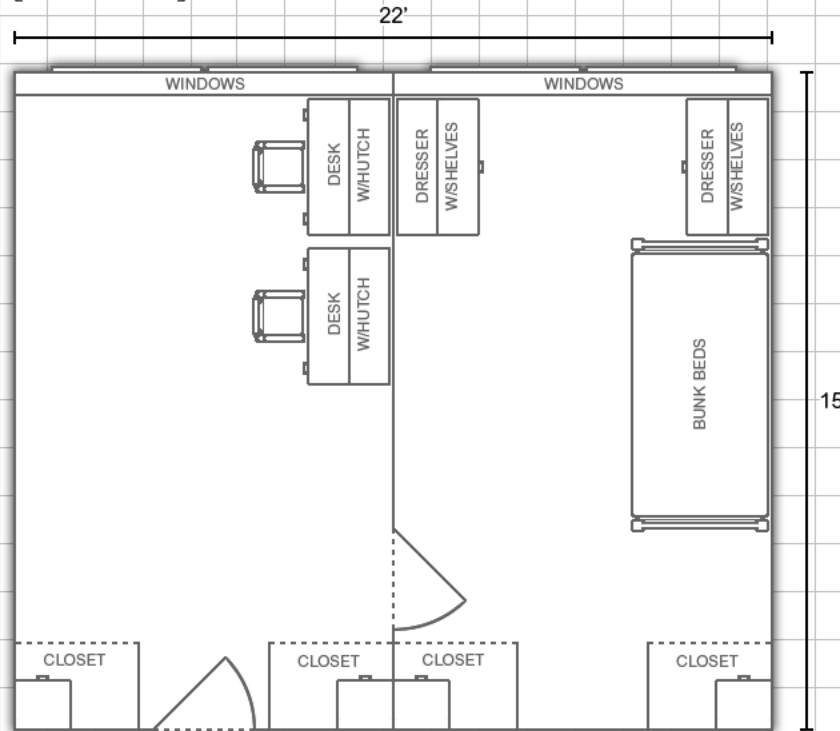
Double Room:

[Second, third and eighth floors,
and rooms 501-514 and 617-630]



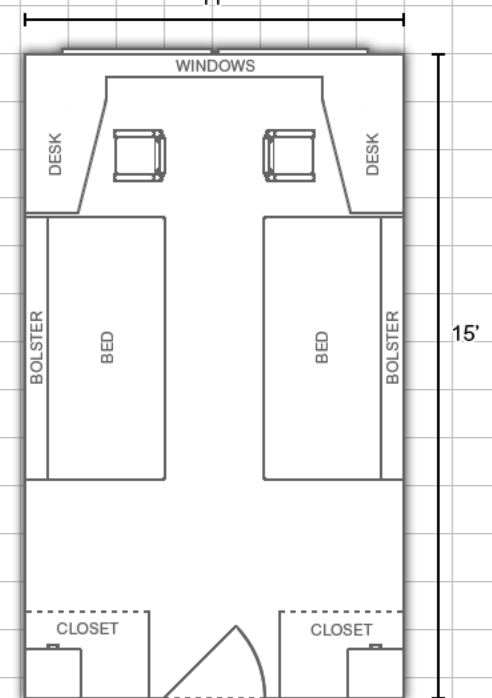
Deluxe Double Room:

[Rooms 917-930]



Double Room:

[Standard]



Department:



Bedding: Bedding in all rooms measure 80" X 39" (x-long twin)

Closets: Closets in all standard rooms and rooms 917-930 include immovable chest of drawers

Furnishings: Furniture in second, third and eighth floor rooms, as well as rooms 501-514 and 617-630, are movable stackable and loftable

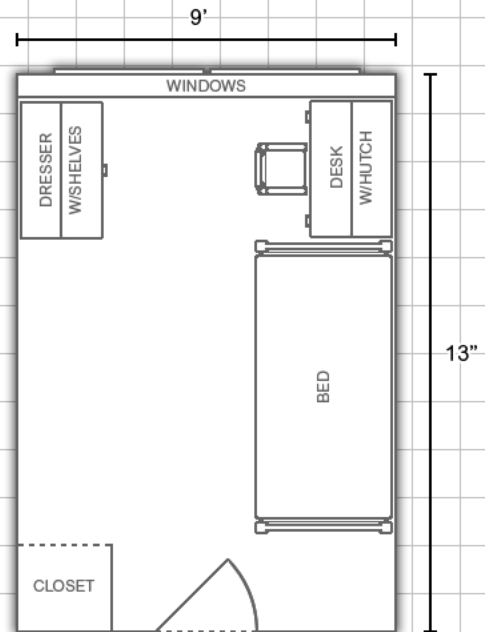
Furniture in rooms 917-930 is movable, but not loftable or stackable

All non-standard rooms are carpeted

Miscellaneous: *Layouts are not to scale*

Single Room:

[Rooms 215, 216, 315, 316,
815 and 816]



Single Room:

[Standard]

