

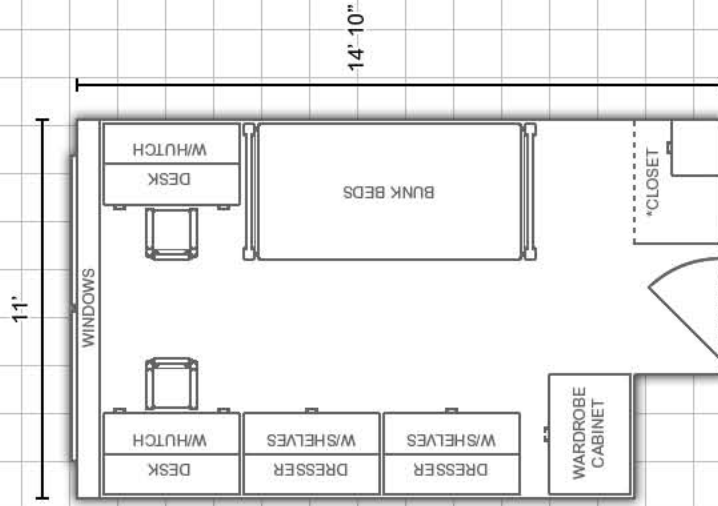
Thomas Hall:

Virtual tours available at www.eiu.edu/~housing



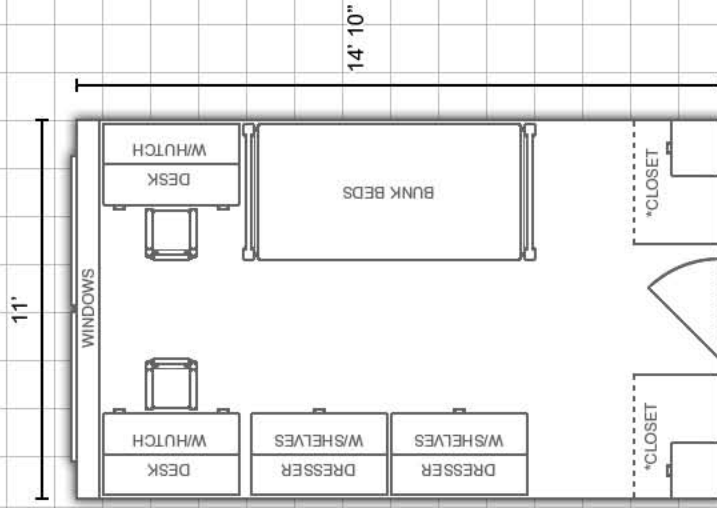
Double Room:

[Rooms 103, 152, 203, 252, 303, 352, 403 and 452]



*Closet includes an immovable chest of drawers

Double Room:



*Closets include an immovable chest of drawers

DEPARTMENT:

Housing and Dining Services



EASTERN ILLINOIS UNIVERSITY

Bedding: Bedding in all rooms measure 80" X 39" (X-long twin)

Furnishings: Rooms are carpeted and feature stackable, loftable and bunkable furniture

Miscellaneous: *Layouts are not to scale*