

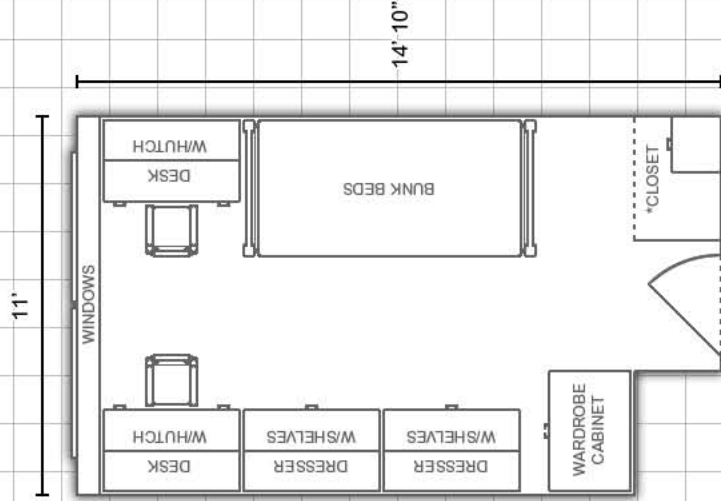
# Taylor Hall:

Virtual tours available at [www.eiu.edu/~housing](http://www.eiu.edu/~housing)

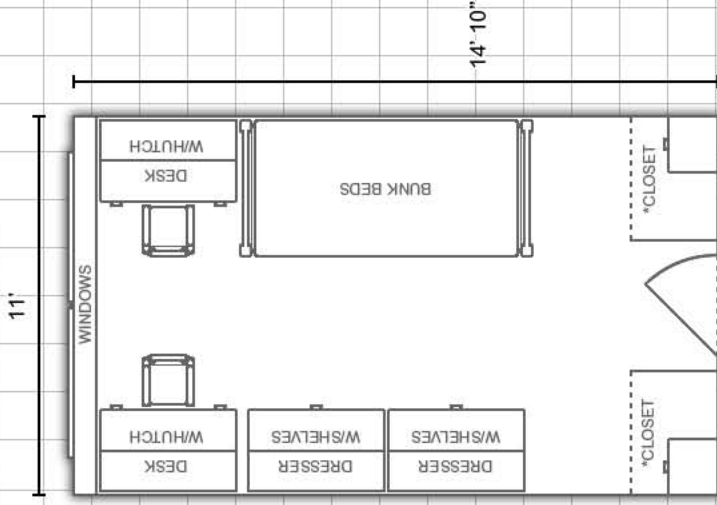


## Double Room:

[Rooms 104, 153, 204, 253, 304,  
353, 404, 453, 504 and 553]



## Double Room:



### DEPARTMENT:

**Housing and Dining Services**



EASTERN ILLINOIS UNIVERSITY

**Bedding:** Bedding in all rooms measure 80" X 39" (X-long twin)

**Furnishings:** Rooms are carpeted and feature stackable, loftable and bunkable furniture

**Miscellaneous:** Layouts are not to scale