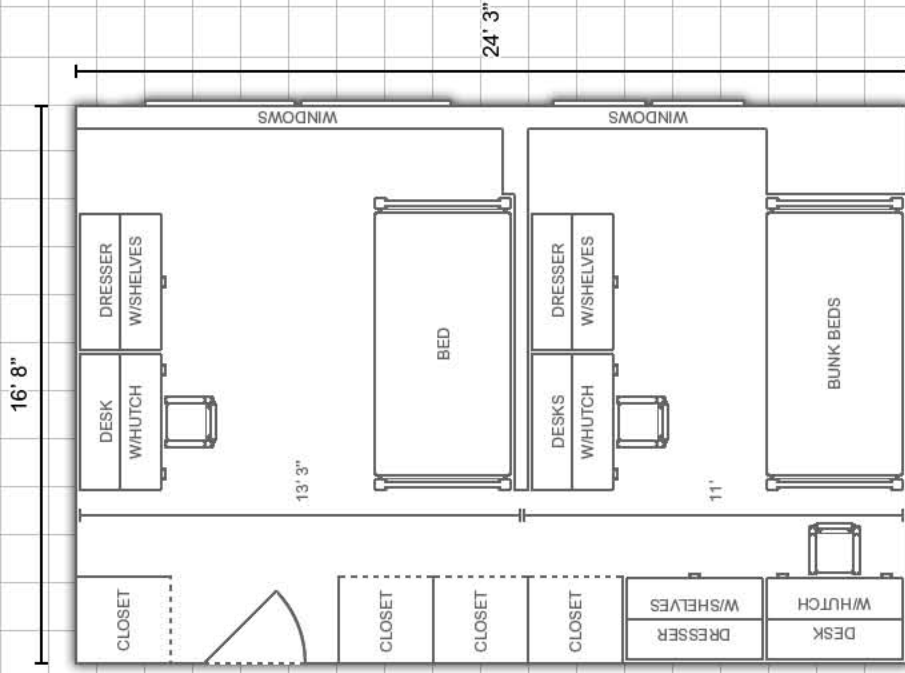


# Carman Hall:

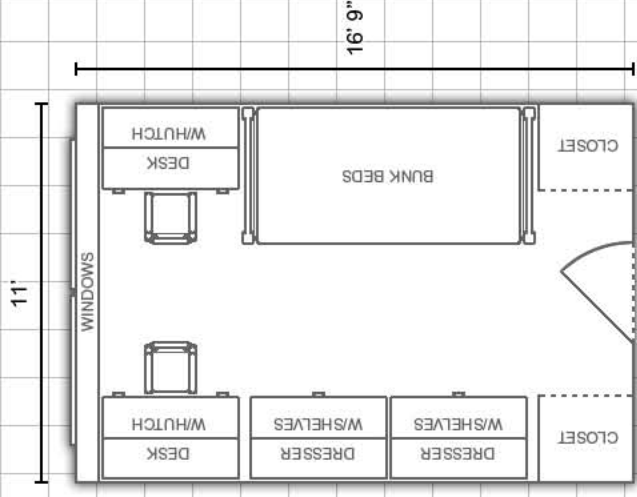
Virtual tours available at [www.eiu.edu/~housing](http://www.eiu.edu/~housing)



## Triple Room:



## Double Room:



DEPARTMENT:

**Housing and Dining Services**



EASTERN ILLINOIS UNIVERSITY

**Bedding:** Bedding in all rooms measure 80" X 39" (x-long twin)

**Furnishings:** Rooms are carpeted and feature stackable, loftable and bunkable furniture

**Miscellaneous:** Layouts are not to scale