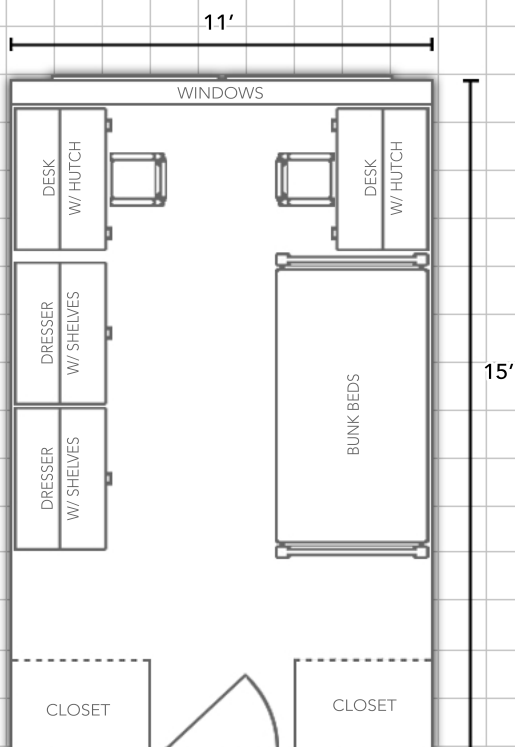


# LAWSON HALL

Information available at [WWW.EIU.EDU/HOUSING](http://WWW.EIU.EDU/HOUSING)

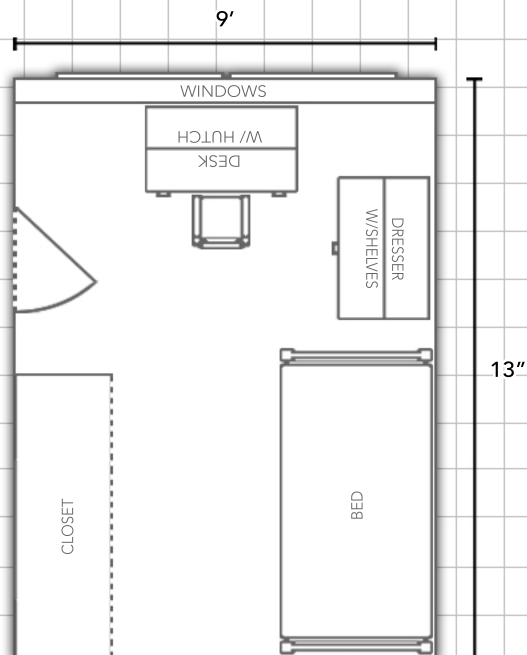


## Double Room:



## Physical Single Room:

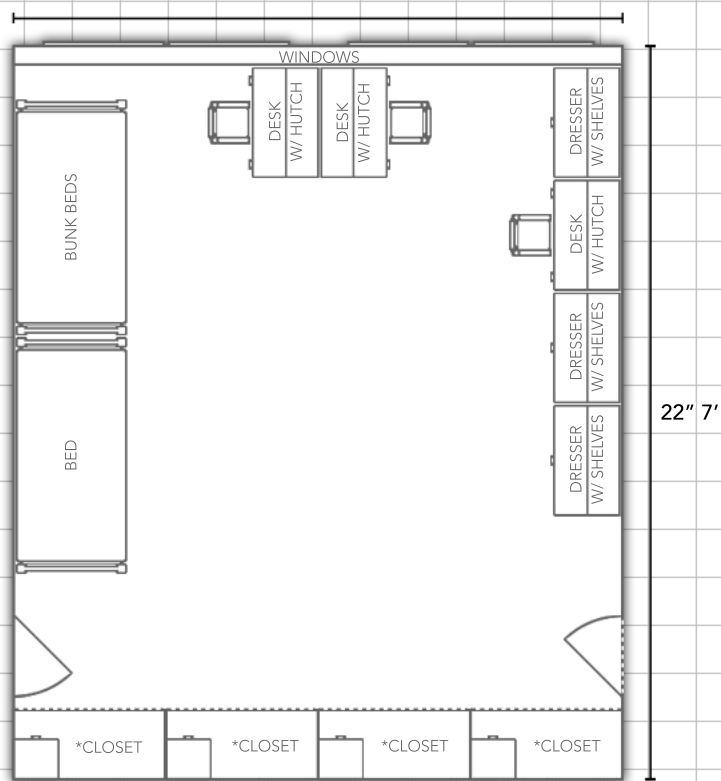
(Rooms 215, 216, 315, 316, 415, 416, 515, 516, 615, 616, 715, 716, 915 and 916)



## Triple Room:

(Rooms 200, 300, 400, 500, 600, 700 and 900)

19' 2"



\*Closets include an immovable chest of drawers

Department:

**Housing and Dining Services**  
EASTERN ILLINOIS UNIVERSITY



Bedding:

Bedding in all rooms measure 80" X 39" (x-long twin)

Furnishings:

Rooms are carpeted and feature stackable, loftable and bunkable furniture

Miscellaneous:

*Layouts are not to scale*