

Scholarship Committee Members

Dr. Karla Kennedy-Hagan

Mrs. Deborah Reifsteck

Mrs. Kathy Rhodes

Dr. Katie Shaw

Dr. Linda Simpson

Dr. Jim Slavik

Mrs. Felicia Magee



School of Family and Consumer Sciences Scholarship and Awards

Recognition Program Greetings

Provost Blair Lord, Vice President of Academic Affairs

Mrs. Deborah Reifsteck and Dr. Katie Shaw of the SFCS Scholarship and Awards Committee and Emcees

Dr. James Painter, Chair of the School of Family and Consumer Sciences

Dr. Mahyar Izadi, Dean of Lumpkin College of Business and Applied Sciences

Dr. Jeanne Snyder, Associate Dean of Lumpkin College of Business and Applied Sciences



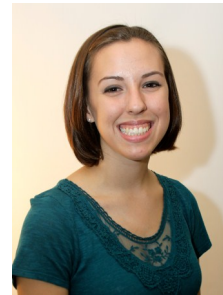
**Klehm Hall — Home of the
School of Family and Consumer Sciences**

**Congratulations to
All of Our Recipients!
We Wish You All
Continued Success!**

Elsie and Erson Giffin Scholarship



This scholarship was established at the request of Dorothy Giffin Dinesen and named in memory of her parents, Elsie and Erson Giffin. The Giffin's raised six children during the depression years. Dorothy graduated from high school, but could not afford to go to college. Before her death in 1977, she called her brother Jim Giffin, the founding Dean of Eastern's School of Business and told him of her savings through the years. She wanted to use this money to assist outstanding students to achieve their goals. The criteria includes service to the community, leadership in pre-professional activities as well as academic excellence.



Sara Duncan
Aurora, IL



Melissa Harper
Glen Ellyn, IL



Seong-Oea Hibner
Schaumburg, IL



Britney Jones
Chicago, IL



Colleen O'Sullivan
Orland Hills, IL



Ginny Williams
Mansfield, IL

Ozier Child and Family Award



After her retirement in December 2003, Dr Jayne Ozier established the Ozier Child and Family Award. She started teaching at Eastern in 1970 and during her time, she coordinated the Infant & Child Development Laboratories from 1979-2002, served as Acting Chair 2002-2003, and served as Director of the Child Care Resource & Referral Program. She believes that nothing is more professionally satisfying than observing former Family and Consumer Sciences students actively engaged in child and family related careers. While no longer teaching, she wanted to continue supporting students as they pursue their study of children and families.



Amber Rigsby
East St. Louis, IL

Ruth Miller Esbeck Scholarship



Ruth Miller Esbeck graduated from Casey High school in 1932 and received an academic scholarship to EIU. She graduated with a degree in Home Economics in 1936 when the campus was quite small and all the students and faculty knew each other well. Once when she missed class due to illness, the President of EIU, Dr. Lord visited her. Ms. Esbeck died in 1995. Her husband, Howard, established the Ruth Miller Esbeck Scholarship as a tribute to Ruth and to assist students to have the same opportunity that she did to obtain a college education. Recipients of the Esbeck Scholarship must be from East Central Illinois and have exceptional leadership and academic qualifications.



Deanna Althoff
Teutopolis, IL



Rachael
Jannusch
St. Joseph, IL



Kimberly Roth
Lerna, IL



Elyn Andrews
Paris, IL



Whitney Millis
Newton, IL



Tonya Short
Lawrenceville, IL



Amber Brooke
Casey, IL



Maria Rasche
Fisher, IL



Stephanie
Stuemke
Teutopolis, IL

McNabb-Dow Graduate Scholarship



Dr. Ruth Dow, a retired Professor in Family and Consumer Sciences and her husband Charles, established the McNabb-Dow Graduate Scholarship. The scholarship is named in memory of her parents, Bernie and Nellie McNabb and his parents, Loren and Ina Dow. These individuals valued education as long as they lived and provided help to others in countless ways.

Ruth Gaertner Scholarship



The Ruth Gaertner Scholarship was established by Carolyn and Norman Patberg in memory of her mother. She was the first Food Director at EIU and served at this University for many years as head of Food Services. She was a Registered Dietitian and directed the food services operation through much growth and expansion. The award is made annually to a dietetics student who rates high in leadership responsibilities and academics.



Emily Brinkmann
Rolla, MO



Stephanie Winzenburger
Cobden, IL



Mattie Watts
Ottawa, IL

Eileen F. Hubbard Scholarship



The Eileen F. Hubbard Scholarship was established by Dr. Mary Lou Hubbard, Professor in the School of Family and Consumer Sciences and her father, Mr. Robert Hubbard in memory of her mother. Mrs. Hubbard began college in the middle of the depression with financial help from an uncle. After two years, she was forced to give up her desire for a college degree due to lack of funds. During the next 50 years, she gave hours of service in volunteer activities. The award is made annually and is based on service, professional involvement, and leadership qualities.



Kathryn Hawley
Washington, IL



Amanda Little
Sparta, IL

School of Family and Consumer Sciences Elderhostel Scholarship

The Elderhostel Scholarship was established by the School of Family and Consumer Sciences through funds received by an Elderhostel Intergenerational Program sponsored by FCS. The recipient of the scholarship each year is a qualified Master's of Art Gerontology Student. The interdisciplinary program administered by FCS allows students to study the processes of aging, to learn about the network of social service agencies, to develop competencies for working with older persons, and prepare for a wide range of careers in gerontology.



Nnenna Obi
Ikeja, Lagos - Africa

Carolyn Kluesner Modglin Memorial Graduate Scholarship



Carolyn Kluesner Modglin was an active high school student and graduated in the top 10% of her class. She received her undergraduate degree from Southeast Missouri State and graduated cum laude. She completed a M.S. in Dietetics at EIU and became a registered dietitian. She loved life and people and loved to care and serve for others. After her unexpected death in 1993, the memorial scholarship was established and is given annually to a dietetics undergraduate student who excels in academics and has outstanding leadership qualities.



Lindsey Richter
Sullivan, IL

Donna Lynn Connelly Scholarship



The Donna Lynn Connelly Scholarship was established in memory by her family. Donna was a very active student and athlete in high school. At Eastern Illinois University, Donna was a member of the Alpha Phi sorority and in intramurals. She was an FCS major in the Business option, Consumer Affairs concentration. The award is given annually to a female majoring in the FCS Business option.



Bree Angelo
Algonquin, IL



Brianna Baker
Neoga, IL



Kayla Garner
Sauk Village, IL



Andrea Hussong
Mattoon, IL

Swope Fund for Excellence - Outstanding Senior Awards



Dr. Mary Ruth Swope was Dean of what was then known as the School of Home Economics for many years. Upon her retirement, this fund was established with the contributions of family and friends to honor her and bring recognition to the HEC/FCS program at Eastern Illinois University. Outstanding seniors in each option/concentration are selected annually by the faculty based on scholarship and evidence of leadership ability.



Apparel & Textile Design
Kelsey Miner
Bloomington, IL



Consumer Studies
Megan Jackson
Bolingbrook, IL



Dietetics
Rachael Jannusch
St. Joseph, IL



Family Services
Danae Pritts
Robinson, IL



Hospitality
Allyson Dinkle
Hoffman Estates, IL



Teacher Certification
Samantha Fifer
New Lenox, IL

School of Family & Consumer Sciences Graduate Scholarship

Since 1987, donations received from alumni during the annual telefund have been used, in part, to fund the School of Family and Consumer Sciences Graduate Scholarship. The award is made to a graduate student who has demonstrated leadership, scholarship, service and commitment to the discipline.



Laura Lucas
Oakwood, IL