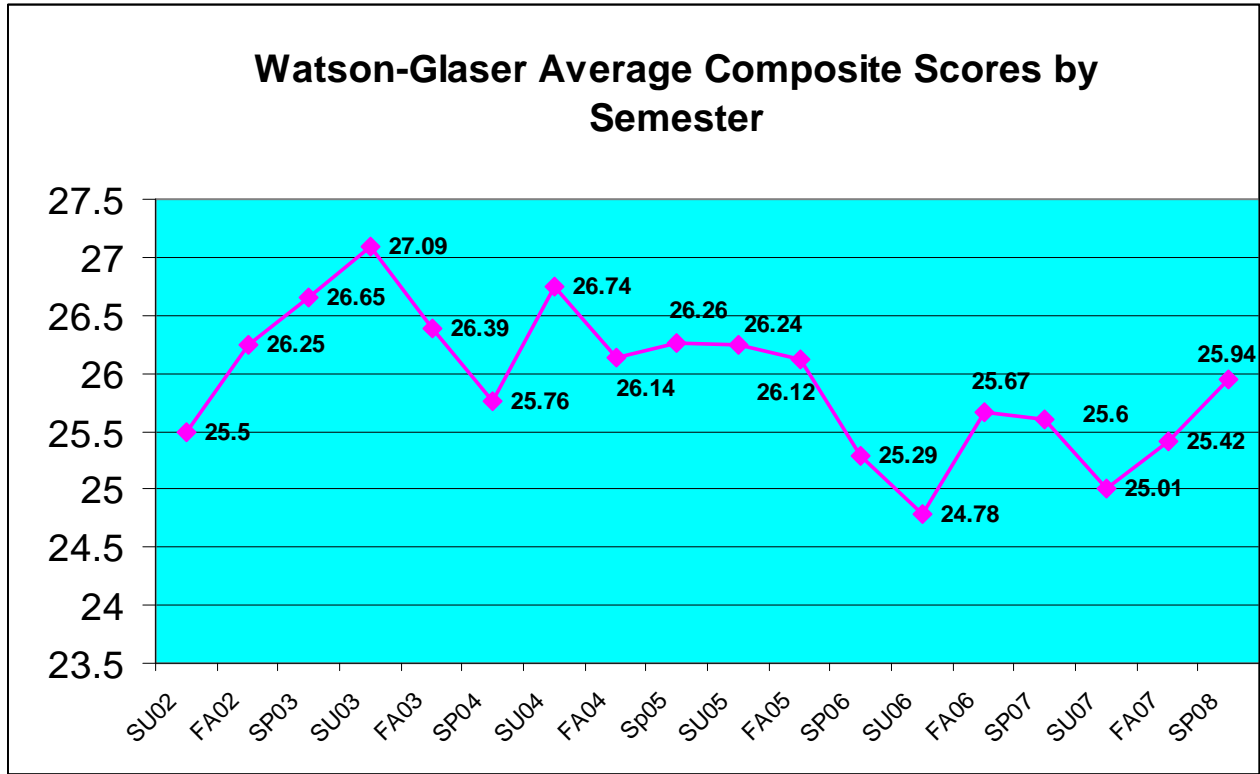


AY2007-2008 Watson-Glaser Report

All Sections Combined: Comparisons to the Previous Semester Scores

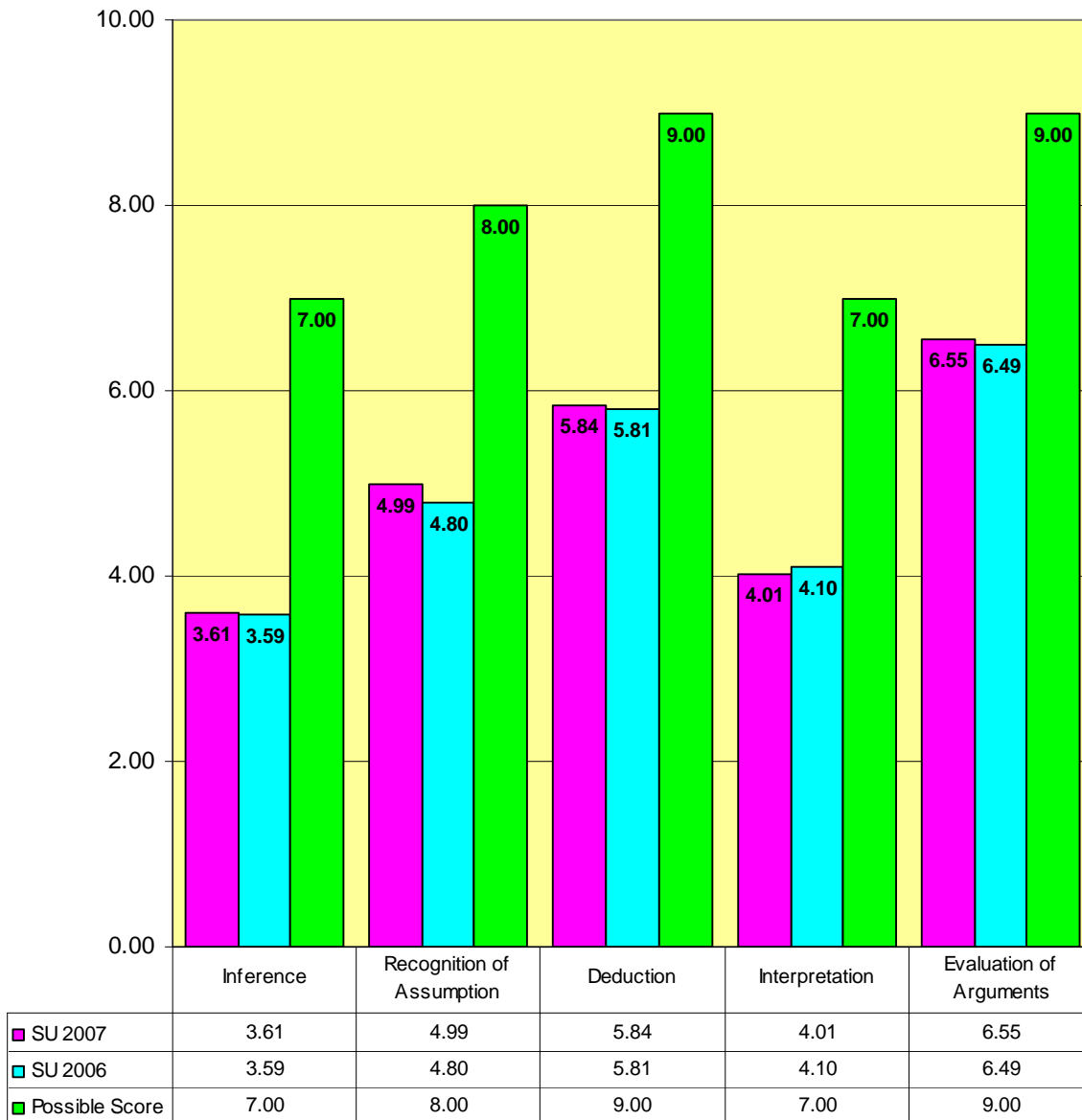
The chart below indicates the average composite scores by semester. Because we are using the short form of the Watson-Glaser Critical Thinking Appraisal, only the composite score is considered valid. Comparisons may be made from spring semester to spring semester, fall semester to fall semester, and so on.



The following three charts offer the subscores for each semester in AY08 compared to the corresponding semester in AY07. These charts as well as the data by major and the composite average are shared with department chairs.

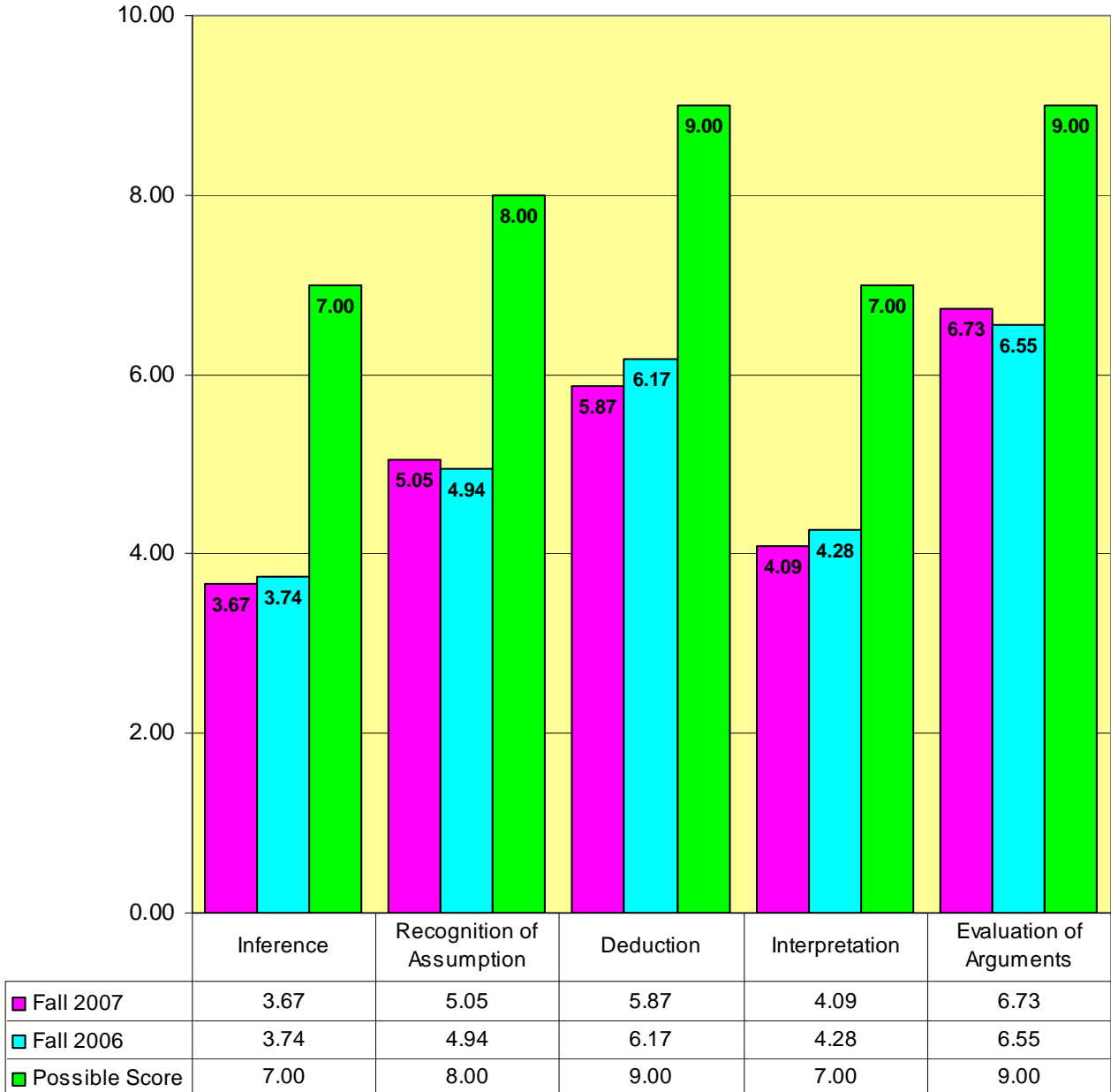
Watson-Glaser Analysis

Summer 2006 & Summer 2007 Mean Score Comparison



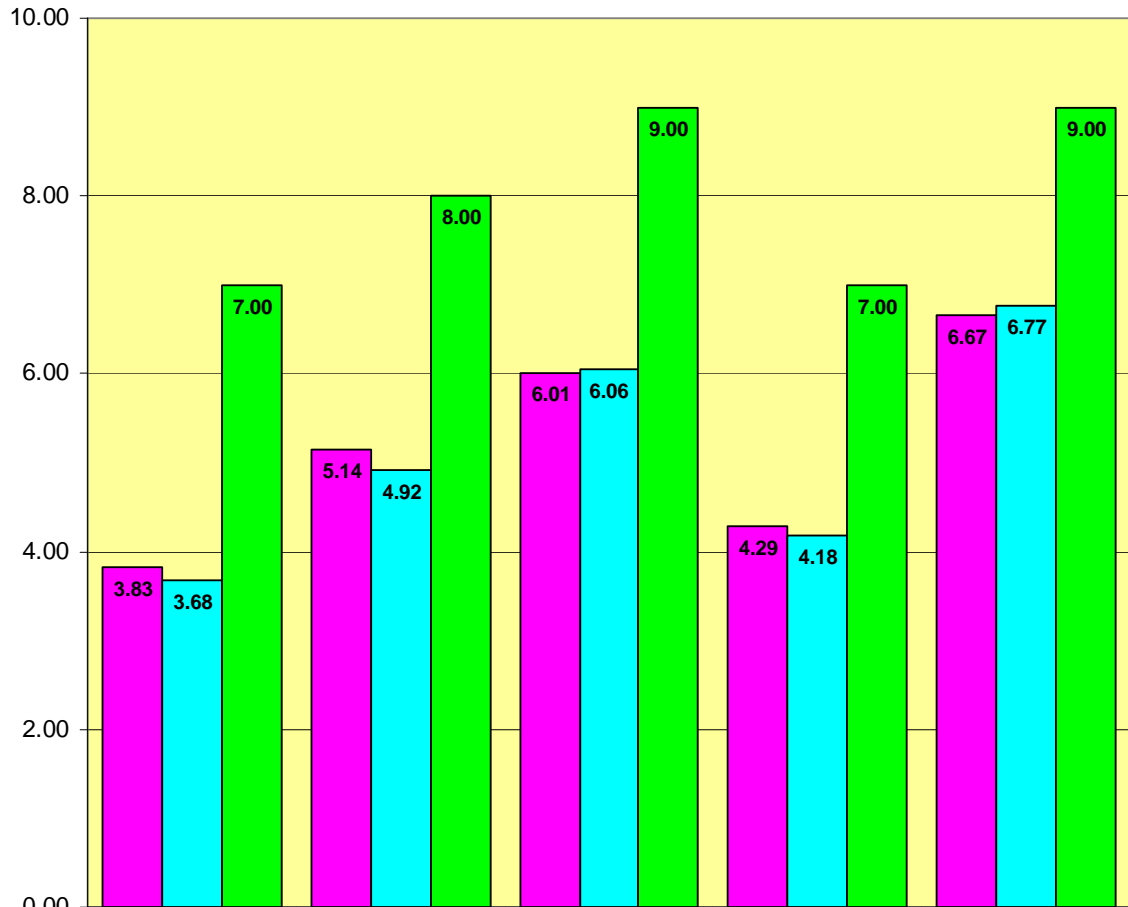
Watson-Glaser Analysis

Fall 2007 & Fall 2006
Mean Score Comparison



Watson-Glaser Analysis

Spring 2007 & Spring 2008 Mean Score Comparison



	Inference	Recognition of Assumption	Deduction	Interpretation	Evaluation of Arguments
Spring 2008	3.83	5.14	6.01	4.29	6.67
Spring 2007	3.68	4.92	6.06	4.18	6.77
Possible Score	7.00	8.00	9.00	7.00	9.00