

# STEVENSON HALL

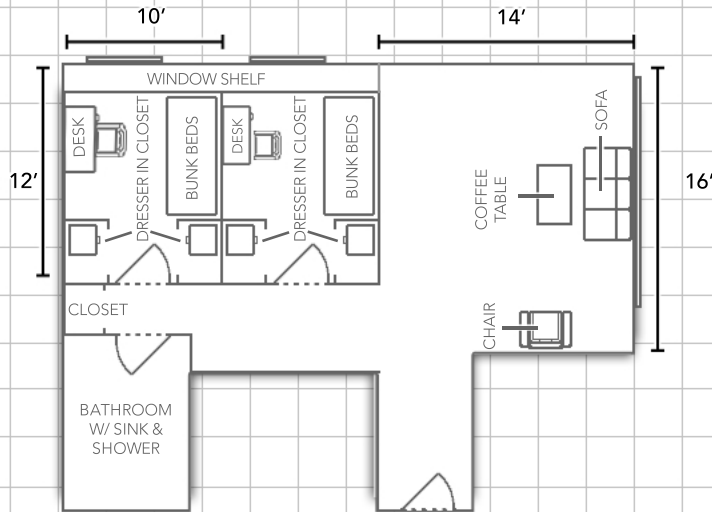


Information available at [WWW.EIU.EDU/HOUSING](http://WWW.EIU.EDU/HOUSING)

All bedrooms within these suites are designed as Double Rooms for 2 people. Students can choose to live with a roommate or buy out a bedroom as a Double as a Single.

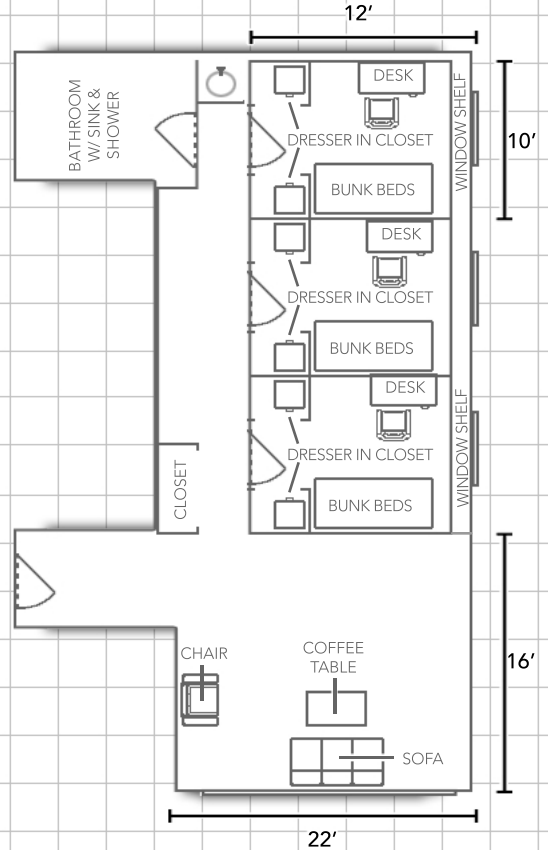
## Suites D and F:

15 suites of this type available



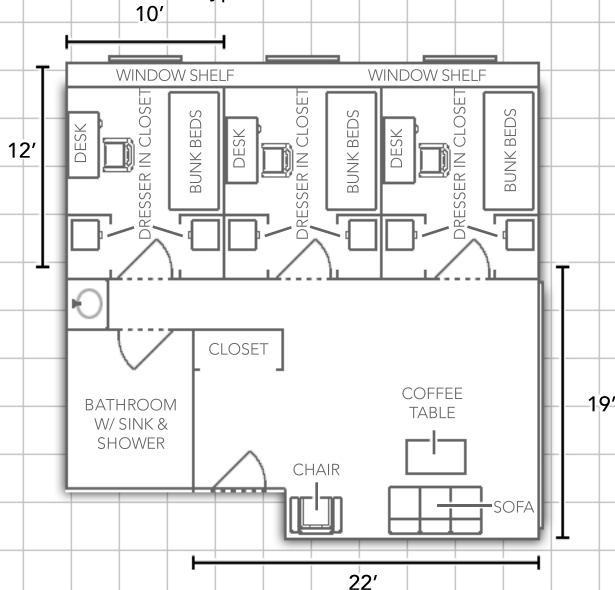
## Suites A and J:

16 suites of this type available



## Suites B, C, H and G:

32 suites of this type available



**MORE LAYOUTS ON BACK!** →

Department:

**Housing and Dining Services**



EASTERN ILLINOIS UNIVERSITY™

Bedding:

Bedding in all rooms measure 80" X 39" (x-long twin)

Furnishings:

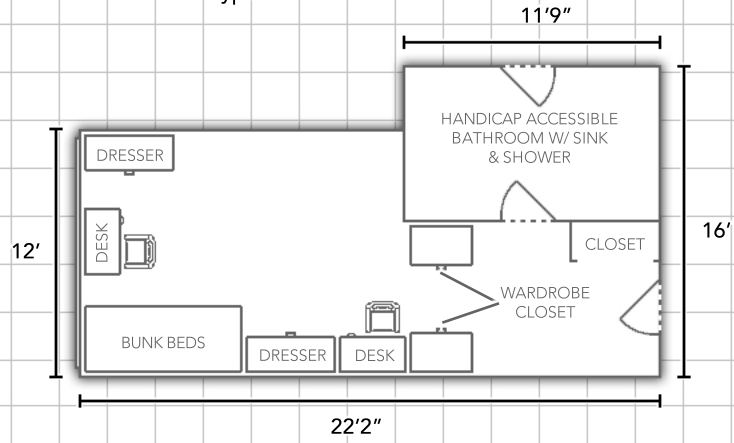
All residential rooms are carpeted

Miscellaneous:

*Layouts are not to scale*

### Suite K: (Share with Resident Assistant)

2 suites of this type available



### Suite K: (Share with Resident Assistant)

6 suites of this type available

