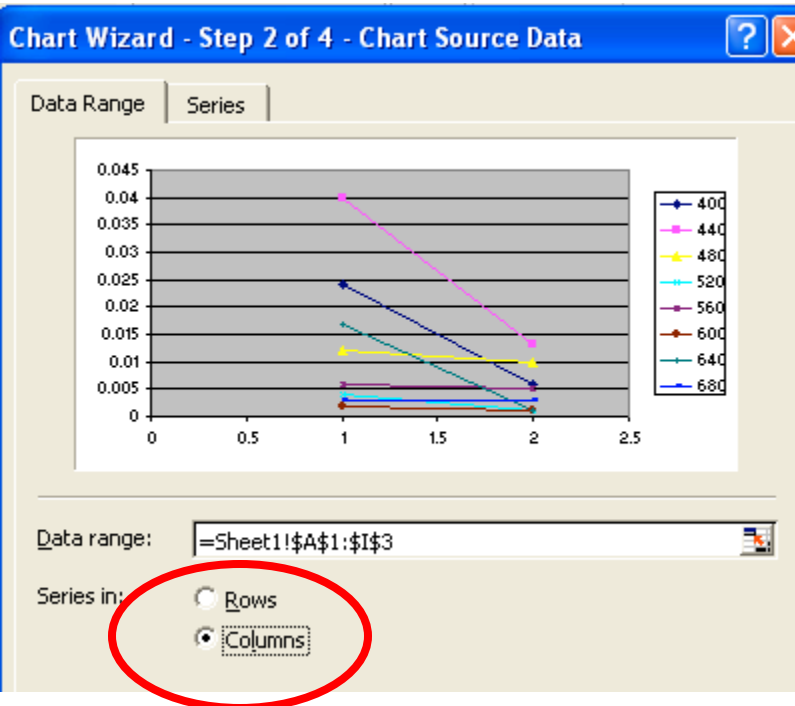


Graphing using Microsoft Excel

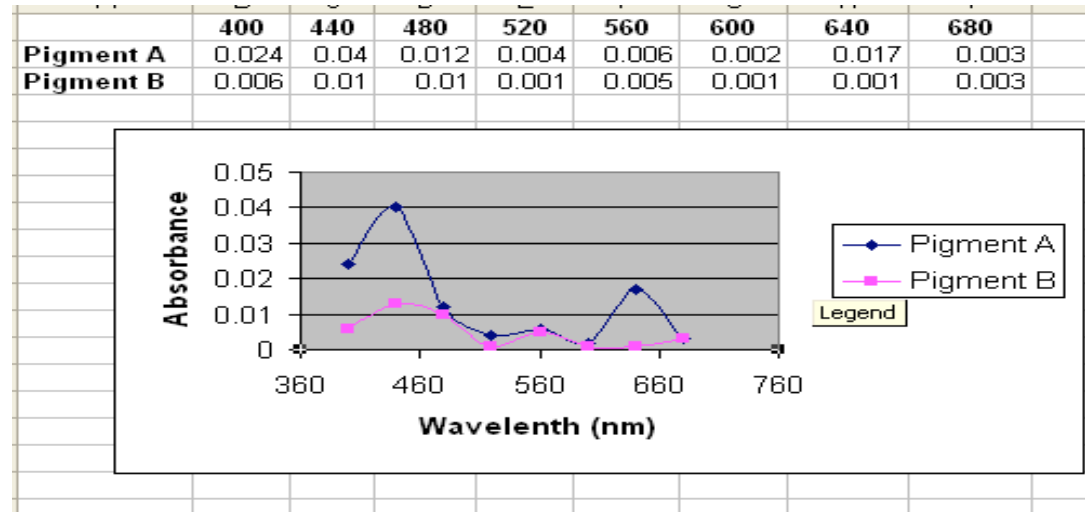
Excel tutorial #7- Troubleshooting Excel graphing

Problem # 1

In step 2 of Chart wizard, your graph look like this:



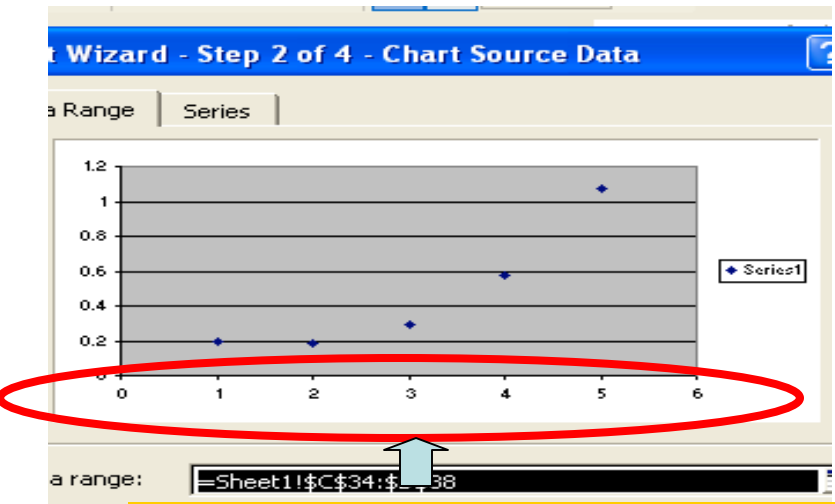
When you expected it to look like this:



Solution: Select the “Rows” button instead of the “Columns” button

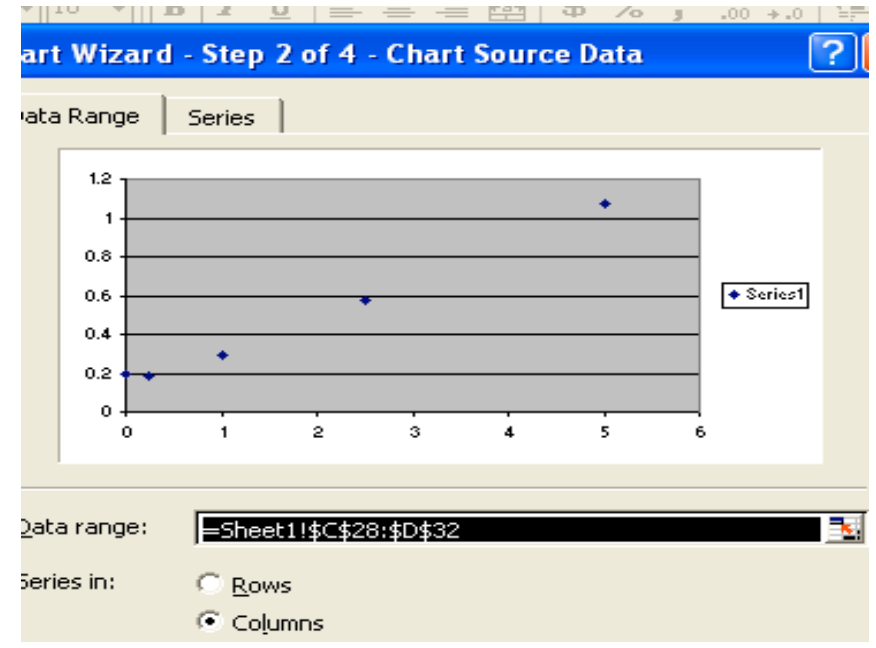
Problem # 2:

Your X axis is not linear, and so your graph looks lousy, like this:



Note that X axis is non-linear! In other words, the data points do not correlate with the concentrations on the X axis.

....instead of this:



Solution: Omit all text (headers, units) from the area that you select.

Correct:

0	0.199
0.25	0.187
1	0.293
2.5	0.576
5	1.069

Incorrect:

0 ug/ml	0.199
0.25 ug/ml	0.187
1.0 ug/ml	0.293
2.5 ug/ml	0.576
5 ug/ml	1.069

Correct:

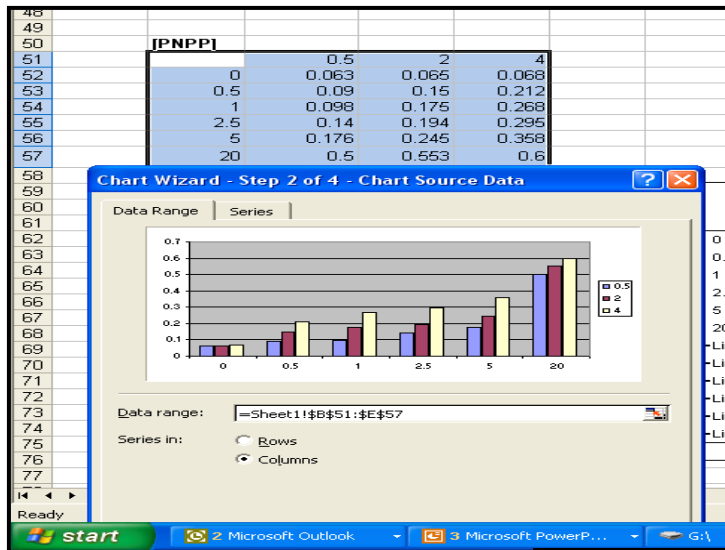
0	0.199
0.25	0.187
1	0.293
2.5	0.576
5	1.069

Incorrect:

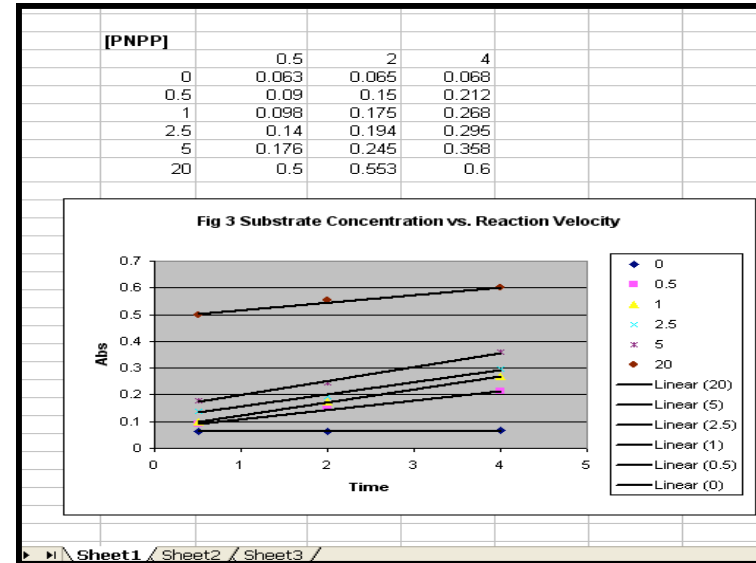
Enzyme conc.	
0	0.199
0.25	0.187
1	0.293
2.5	0.576
5	1.069

Problem # 3:

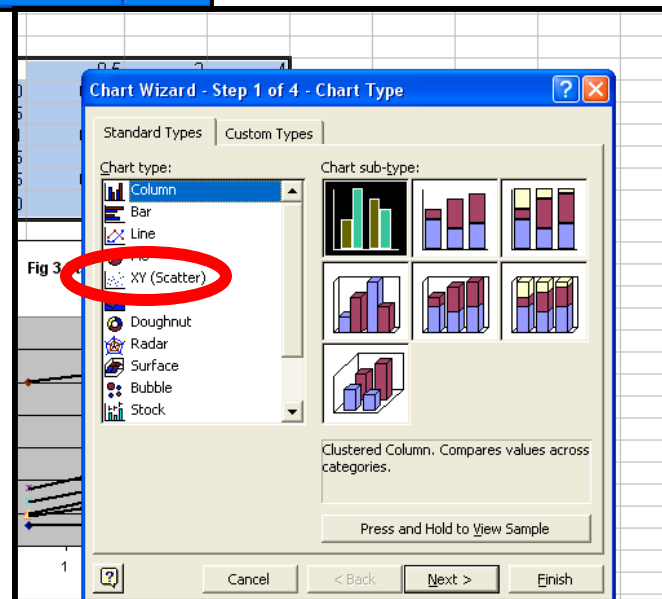
Your graph looks like this:



....instead of this:



Solution: Never choose anything but “XY scatter” in step of 2 of Chart Wizard.



Note:

If you really want a bar graph, start with “XY scatter”, then after the graph is done, right-click on the graph, then select “Chart Type”. Note, however, that bar graphs are normally a poor choice, because the X axis becomes non-linear.